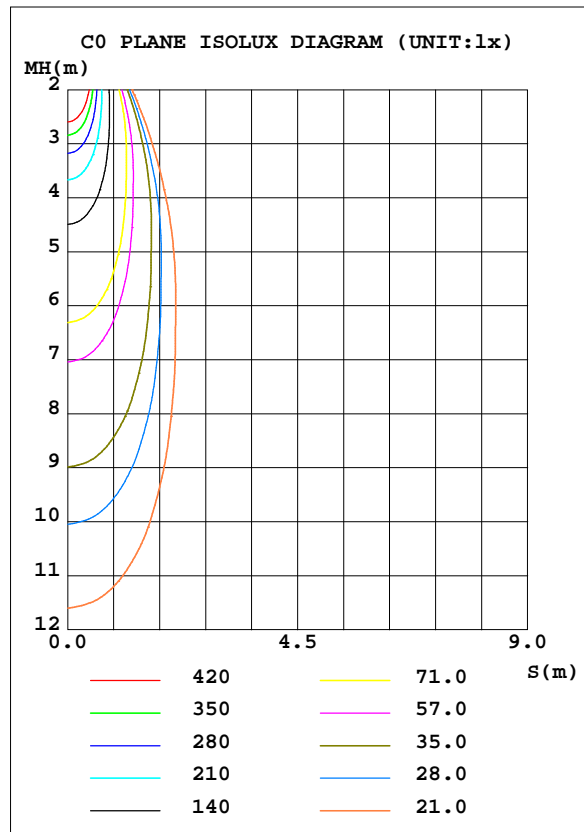
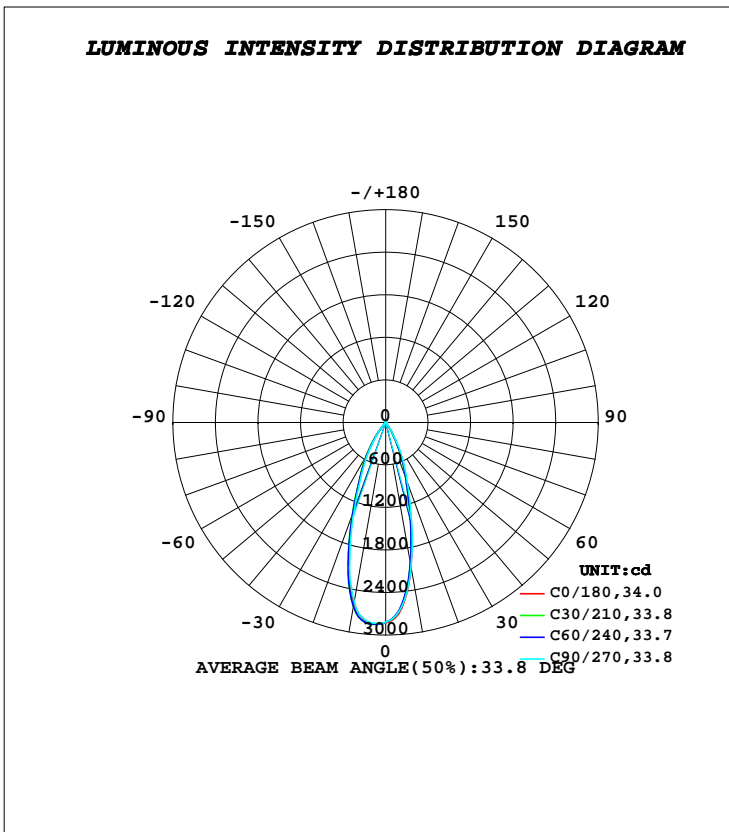


LUMINAIRE PHOTOMETRIC TEST REPORT

Test:U:221.80V I:0.0590A P:10.800W PF:0.8270 Freq:50.00Hz		
Lamp Flux:1211.62x1 lm		
Name: NS10-φ86mm-10W	Type: LED	
MFR.: Lumega Group	DIM.: D86*H55mm	
	SUR.: D65mm	

DATA OF LAMP		PHOTOMETRIC DATA Eff: 112.19 lm/W			
MODEL		I _{max} (cd)	2856	S/MH(C0/180)	0.49
NOMINAL POWER(W)	10	LOR(%)	100.0	S/MH(C90/270)	0.50
RATED VOLTAGE(V)	220	TOTAL FLUX(lm)	1211.6	η UP, DN(C0-180)	1.4, 41.6
NOMINAL FLUX(lm)	1211.62	CIE CLASS	DIRECT	η UP, DN(C180-360)	1.5, 55.4
LAMPS INSIDE	1	η up(%)	3.0	CIBSE SHR NOM	0.50
TEST VOLTAGE(V)	220	η down(%)	97.0	CIBSE SHR MAX	0.60



C Range: 0 - 360DEG
C Interval: 30.0DEG
Test Speed: HIGH
Temperature: 25.3DEG
Operators: DAMIN
Test Date: 2022-05-04

γ Range: 0 - 180DEG
γ Interval: 1.0DEG
Test System: EVERFINE GO-2000A_V1 SYSTEM V2.00.443
Humidity: 65.0%
Test Distance: 8.000m [K=0.7063]
Remarks:

ZONAL FLUX DIAGRAM

ZONAL FLUX DIAGRAM:

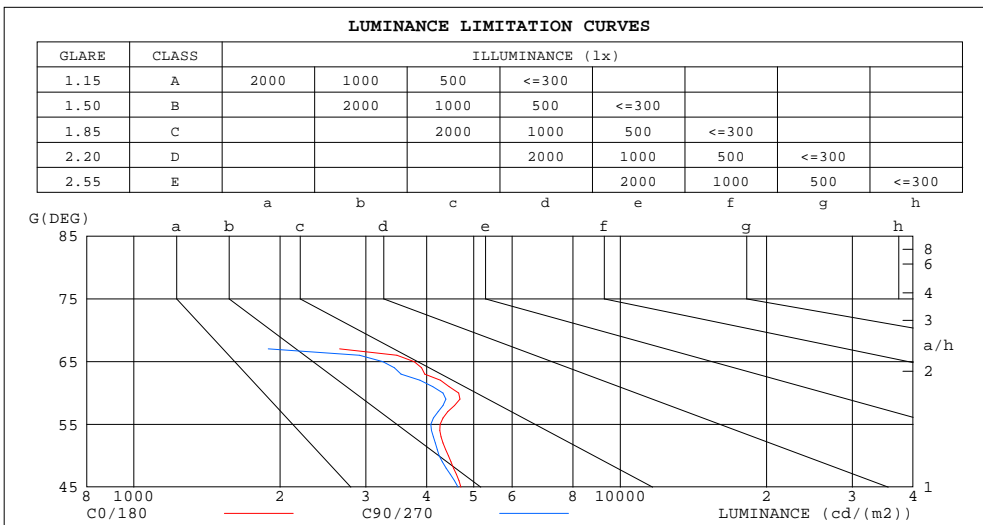
γ	C0	C45	C90	C135	C180	C225	C270	C315	γ	Φ zone	Φ total	%lum,lamp
10	2063	2006	2064	2325	2583	2632	2568	2370	0- 10	247.7	247.7	20.4,20.4
20	855.7	826.5	891.4	1126	1350	1371	1292	1116	10- 20	465.1	712.8	58.8,58.8
30	231.3	234.2	285.8	429.6	559.8	555.8	492.4	383.4	20- 30	319.2	1032	85.2,85.2
40	13.32	5.273	13.12	49.92	84.48	81.09	64.13	42.11	30- 40	112.3	1144	94.4,94.4
50	9.409	8.743	9.009	10.88	12.80	13.28	12.94	11.59	40- 50	13.58	1158	95.6,95.6
60	7.687	7.036	7.135	8.512	9.955	10.26	9.995	9.102	50- 60	8.666	1167	96.3,96.3
70	0.2292	0	0.1778	3.784	7.451	8.529	7.942	4.997	60- 70	6.735	1173	96.8,96.8
80	0.1861	0.0317	0.1509	0.7470	1.347	1.476	1.344	0.8936	70- 80	1.407	1175	97,97
90	0.3695	0.1870	0.3307	1.042	1.759	1.919	1.766	1.223	80- 90	1.005	1176	97,97
100	0.8232	0.6437	0.7868	1.492	2.203	2.362	2.210	1.672	90-100	1.404	1177	97.2,97.2
110	1.818	1.670	1.774	2.319	2.870	2.992	2.875	2.465	100-110	2.006	1179	97.3,97.3
120	3.372	3.259	3.320	3.681	4.054	4.163	4.109	3.828	110-120	2.958	1182	97.6,97.6
130	5.920	5.831	5.781	5.782	5.812	5.874	5.931	5.940	120-130	4.216	1186	97.9,97.9
140	9.570	9.389	9.155	8.805	8.504	8.422	8.529	8.937	130-140	5.622	1192	98.4,98.4
150	13.64	13.38	13.05	12.61	12.19	11.88	11.87	12.52	140-150	6.703	1199	98.9,98.9
160	16.61	16.45	16.24	15.96	15.65	15.21	15.02	15.57	150-160	6.583	1205	99.5,99.5
170	17.79	17.76	17.68	17.58	17.42	17.03	16.79	17.11	160-170	4.729	1210	99.9,99.9
180	17.98	17.74	17.66	17.84	18.02	17.82	17.62	17.71	170-180	1.674	1212	100,100
DEG	LUMINOUS INTENSITY:cd									UNIT:lm		

C Range: 0 - 360DEG
C Interval: 30.0DEG
Test Speed: HIGH
Temperature:25.3DEG
Operators:DAMIN
Test Date:2022-05-04

γ Range: 0 - 180DEG
 γ Interval: 1.0DEG
Test System:EVERFINE GO-2000A_V1 SYSTEM V2.00.443
Humidity:65.0%
Test Distance:8.000m [K=0.7063]
Remarks:

LUMINANCE LIMITATION CURVES

Test:U:221.80V I:0.0590A P:10.800W PF:0.8270 Freq:50.00Hz		
Lamp Flux:1211.62x1 lm		
Name: NS10-φ86mm-10W	Type: LED	
MFR.: Lumega Group	DIM.: D86*H55mm	
	SUR.: D65mm	



LUMINANCE cd/(m2)		
G(DEG)	C0/180	C90/270
85	869	736
80	325	263
75	212	165
70	203	158
65	3770	3253
60	4659	4324
55	4264	4082
50	4436	4247
45	4706	4639

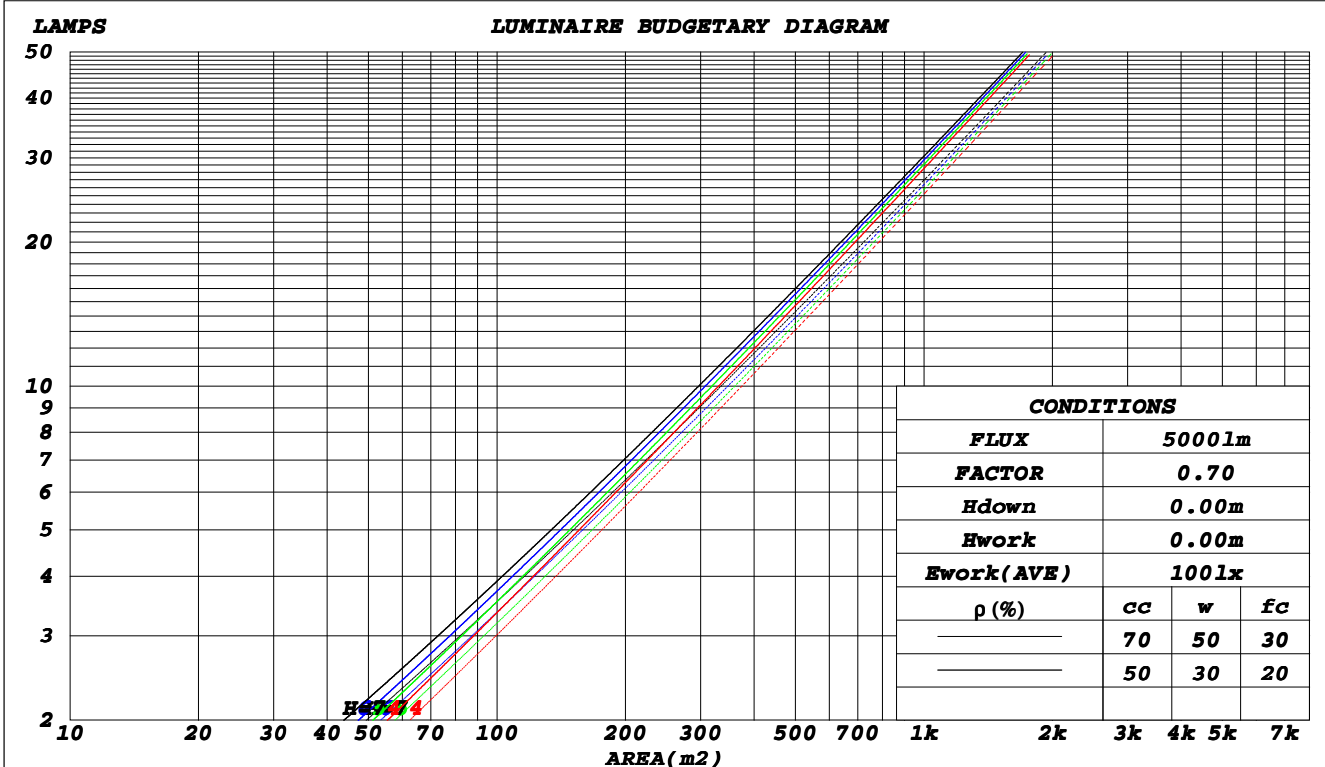
C Range: 0 - 360DEG
C Interval: 30.0DEG
Test Speed: HIGH
Temperature: 25.3DEG
Operators: DAMIN
Test Date: 2022-05-04

γ Range: 0 - 180DEG
γ Interval: 1.0DEG
Test System: EVERFINE GO-2000A_V1 SYSTEM V2.00.443
Humidity: 65.0%
Test Distance: 8.000m [K=0.7063]
Remarks:

CU AND LUMINAIRE BUDGETARY ESTIMATE DIAGRAM

Test:U:221.80V I:0.0590A P:10.800W PF:0.8270 Freq:50.00Hz		
Lamp Flux:1211.62x1 lm		
Name: NS10-φ86mm-10W	Type: LED	
MFR.: Lumega Group	DIM.: D86*H55mm	
	SUR.: D65mm	

ρcc	80%			70%			50%			30%			10%			0
ρw	50%	30%	10%	50%	30%	10%	50%	30%	10%	50%	30%	10%	50%	30%	10%	0
ρfc	20%			20%			20%			20%			20%			0
RCR	RCR:Room Cavity Ratio						Coefficients of Utilization(CU)									
0.0	1.18	1.18	1.18	1.15	1.15	1.15	1.09	1.09	1.09	1.04	1.04	1.04	.99	.99	.99	.97
1.0	1.11	1.09	1.07	1.09	1.07	1.05	1.04	1.02	1.01	.00	.99	.98	.96	.95	.94	.92
2.0	1.04	1.01	.98	1.03	.99	.97	.99	.96	.94	.96	.93	.92	.92	.91	.89	.88
3.0	.99	.94	.91	.97	.93	.90	.94	.91	.88	.91	.89	.87	.89	.87	.85	.83
4.0	.94	.89	.85	.92	.88	.85	.90	.86	.83	.88	.85	.82	.86	.83	.81	.79
5.0	.89	.84	.80	.88	.83	.80	.86	.82	.79	.84	.81	.78	.82	.79	.77	.76
6.0	.85	.80	.76	.84	.79	.76	.82	.78	.75	.81	.77	.74	.79	.76	.74	.72
7.0	.81	.76	.72	.80	.75	.72	.79	.75	.72	.77	.74	.71	.76	.73	.70	.69
8.0	.77	.72	.69	.77	.72	.69	.76	.71	.68	.74	.71	.68	.73	.70	.67	.66
9.0	.74	.69	.66	.74	.69	.66	.73	.68	.65	.72	.68	.65	.71	.67	.65	.64
10.0	.71	.66	.63	.71	.66	.63	.70	.66	.63	.69	.65	.62	.68	.65	.62	.61



C Range: 0 - 360DEG
 C Interval: 30.0DEG
 Test Speed: HIGH
 Temperature:25.3DEG
 Operators:DAMIN
 Test Date:2022-05-04

γ Range: 0 - 180DEG
 γ Interval: 1.0DEG
 Test System:EVERFINE GO-2000A_V1 SYSTEM V2.00.443
 Humidity:65.0%
 Test Distance:8.000m [K=0.7063]
 Remarks:

WEC AND CCEC

Test:U:221.80V I:0.0590A P:10.800W PF:0.8270 Freq:50.00Hz		
Lamp Flux:1211.62x1 lm		
Name: NS10-φ86mm-10W	Type: LED	
MFR.: Lumega Group	DIM.: D86*H55mm	
	SUR.: D65mm	

ρ_{cc}	80%			70%			50%			30%			10%			0
ρ_w	50%	30%	10%	50%	30%	10%	50%	30%	10%	50%	30%	10%	50%	30%	10%	0
ρ_{fc}	20%			20%			20%			20%			20%			0
RCR	RCR:Room Cavity Ratio						Wall Exitance Coefficients(WEC)									
0.0																
1.0	.160	.091	.029	.152	.087	.028	.138	.079	.025	.125	.072	.023	.113	.065	.021	
2.0	.150	.082	.025	.144	.079	.024	.132	.073	.023	.121	.068	.021	.110	.062	.020	
3.0	.141	.075	.023	.136	.073	.022	.126	.068	.021	.116	.064	.020	.107	.059	.018	
4.0	.133	.069	.020	.129	.067	.020	.120	.064	.019	.112	.060	.018	.104	.056	.017	
5.0	.126	.064	.019	.122	.063	.018	.115	.060	.018	.107	.057	.017	.101	.054	.016	
6.0	.120	.060	.017	.116	.059	.017	.110	.056	.016	.103	.054	.016	.097	.051	.015	
7.0	.114	.057	.016	.111	.055	.016	.105	.053	.015	.099	.051	.015	.094	.049	.014	
8.0	.109	.053	.015	.106	.052	.015	.101	.050	.014	.096	.049	.014	.091	.047	.014	
9.0	.105	.051	.014	.102	.050	.014	.097	.048	.014	.093	.046	.013	.088	.045	.013	
10.0	.100	.048	.013	.098	.047	.013	.094	.046	.013	.089	.044	.013	.085	.043	.012	

ρ_{cc}	80%			70%			50%			30%			10%			0
ρ_w	50%	30%	10%	50%	30%	10%	50%	30%	10%	50%	30%	10%	50%	30%	10%	0
ρ_{fc}	20%			20%			20%			20%			20%			0
RCR	RCR:Room Cavity Ratio						Ceiling Cavity Exitance Coefficients(CCEC)									
0.0	.213	.213	.213	.182	.182	.182	.124	.124	.124	.071	.071	.071	.023	.023	.023	
1.0	.193	.180	.169	.165	.155	.145	.113	.106	.101	.065	.062	.058	.021	.020	.019	
2.0	.176	.156	.138	.151	.134	.119	.103	.093	.083	.060	.054	.049	.019	.017	.016	
3.0	.163	.136	.116	.139	.118	.100	.096	.082	.070	.055	.048	.041	.018	.016	.014	
4.0	.151	.122	.099	.130	.105	.086	.089	.073	.060	.052	.043	.036	.017	.014	.012	
5.0	.142	.110	.086	.122	.095	.075	.084	.066	.053	.049	.039	.031	.016	.013	.010	
6.0	.134	.100	.076	.115	.087	.066	.079	.061	.047	.046	.036	.028	.015	.012	.009	
7.0	.127	.092	.068	.109	.080	.059	.075	.056	.042	.044	.033	.025	.014	.011	.008	
8.0	.121	.086	.062	.104	.074	.054	.072	.052	.038	.042	.031	.023	.014	.010	.008	
9.0	.116	.080	.057	.100	.070	.050	.069	.049	.035	.040	.029	.021	.013	.010	.007	
10.0	.111	.076	.053	.096	.066	.046	.066	.046	.033	.039	.027	.020	.013	.009	.006	

C Range: 0 - 360DEG
C Interval: 30.0DEG
Test Speed: HIGH
Temperature:25.3DEG
Operators:DAMIN
Test Date:2022-05-04

γ Range: 0 - 180DEG
 γ Interval: 1.0DEG
Test System:EVERFINE GO-2000A_V1 SYSTEM V2.00.443
Humidity:65.0%
Test Distance:8.000m [K=0.7063]
Remarks:

UGR(Unified Glare Rating) Table

Test:U:221.80V I:0.0590A P:10.800W PF:0.8270 Freq:50.00Hz		
Lamp Flux:1211.62x1 lm		
Name: NS10-φ86mm-10W	Type: LED	
MFR.: Lumega Group	DIM.: D86*H55mm	
	SUR.: D65mm	

ceiling/cavity	0.7	0.7	0.5	0.5	0.3	0.7	0.7	0.5	0.5	0.3
walls	0.5	0.3	0.5	0.3	0.3	0.5	0.3	0.5	0.3	0.3
working plane	0.2	0.2	0.2	0.2	0.2	0.2	0.2	0.2	0.2	0.2
Room dimensions	Viewed crosswise					Viewed endwise				
x = 2H y = 2H	10.0	10.8	10.3	11.0	11.2	11.0	11.8	11.3	12.0	12.2
3H	10.0	10.8	10.3	11.0	11.3	11.0	11.7	11.3	11.9	12.2
4H	10.0	10.6	10.3	10.9	11.2	10.9	11.6	11.2	11.8	12.1
6H	9.9	10.5	10.2	10.8	11.1	10.8	11.4	11.1	11.7	12.0
8H	9.8	10.4	10.2	10.7	11.0	10.8	11.4	11.1	11.7	12.0
12H	9.8	10.4	10.1	10.7	11.0	10.7	11.3	11.1	11.6	11.9
4H 2H	10.0	10.7	10.3	11.0	11.2	11.0	11.6	11.3	11.9	12.2
3H	10.0	10.6	10.4	10.9	11.2	10.9	11.5	11.2	11.8	12.1
4H	9.9	10.4	10.3	10.8	11.1	10.8	11.3	11.2	11.7	12.0
6H	9.8	10.3	10.2	10.6	11.0	10.7	11.1	11.1	11.5	11.9
8H	9.7	10.2	10.2	10.6	11.0	10.6	11.1	11.1	11.5	11.9
12H	9.7	10.1	10.1	10.5	11.0	10.6	11.0	11.0	11.4	11.8
8H 4H	9.7	10.2	10.2	10.6	11.0	10.6	11.1	11.1	11.5	11.9
6H	9.6	10.0	10.1	10.4	10.9	10.5	10.9	11.0	11.3	11.8
8H	9.6	9.9	10.1	10.4	10.9	10.4	10.8	10.9	11.2	11.7
12H	9.5	9.8	10.0	10.3	10.8	10.4	10.7	10.9	11.2	11.7
12H 4H	9.7	10.1	10.1	10.5	10.9	10.6	11.0	11.0	11.4	11.8
6H	9.6	9.9	10.1	10.3	10.8	10.4	10.8	10.9	11.2	11.7
8H	9.5	9.8	10.0	10.3	10.8	10.4	10.7	10.9	11.1	11.7
Variations with the observer position at spacings(CIE Pub.117):										
S = 1.0H	+ 1.6 / - 1.1					+ 2.7 / - 1.5				
1.5H	+ 3.4 / - 2.6					+ 4.7 / - 2.8				
2.0H	+ 0.7 / - 1.8					+ 0.7 / - 1.6				

CIE Pub.117, 1212 lm Total Lamp Luminous Flux Corrected (8log(F/F0) = 0.7)
 Area: 0.0033 m2

C Range: 0 - 360DEG
C Interval: 30.0DEG
Test Speed: HIGH
Temperature:25.3DEG
Operators:DAMIN
Test Date:2022-05-04

γ Range: 0 - 180DEG
γ Interval: 1.0DEG
Test System:EVERFINE GO-2000A_V1 SYSTEM V2.00.443
Humidity:65.0%
Test Distance:8.000m [K=0.7063]
Remarks:

UTILIZATION FACTORS TABLE

Test:U:221.80V I:0.0590A P:10.800W PF:0.8270 Freq:50.00Hz Lamp Flux:1211.62x1 lm		
Name: NS10-φ86mm-10W	Type: LED	
MFR.: Lumega Group	DIM.: D86*H55mm	
	SUR.: D65mm	

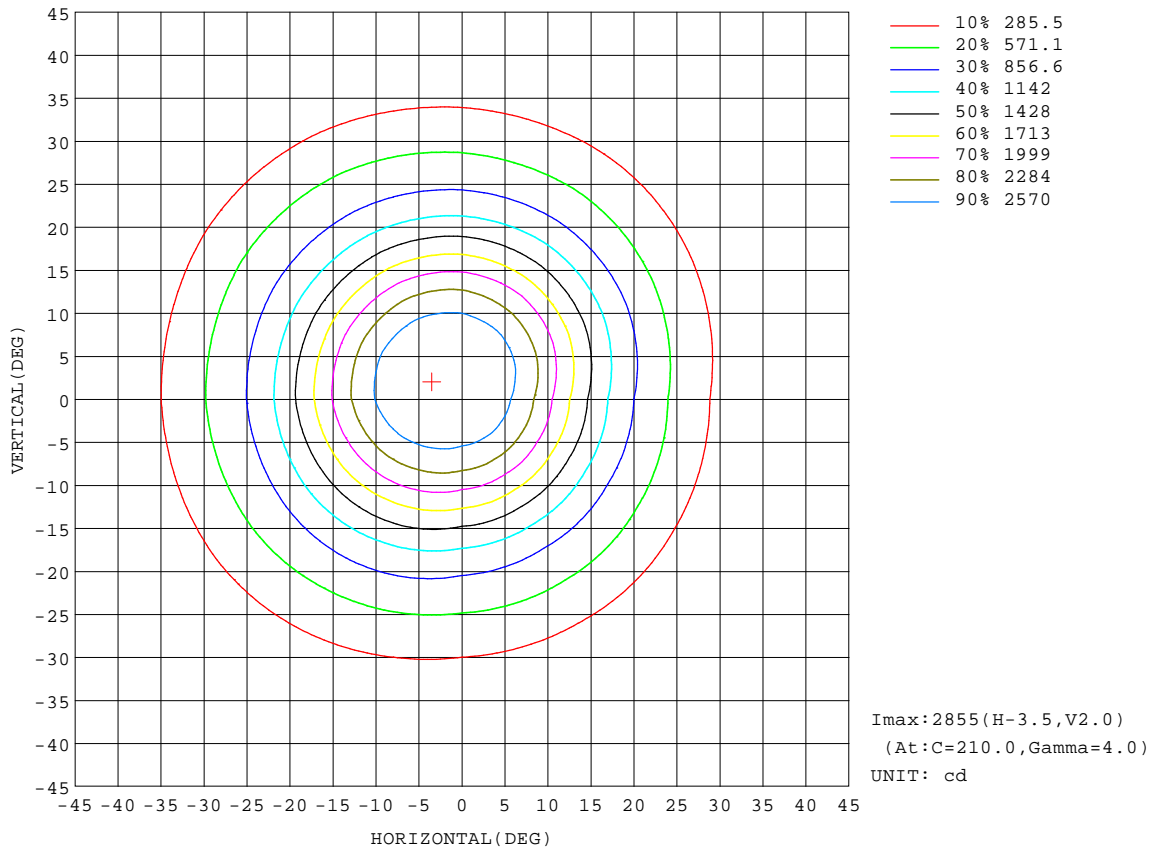
REFLECTANCE										
Ceiling	0.8	0.8	0.8	0.7	0.7	0.7	0.5	0.5	0.5	0
Walls	0.7	0.5	0.3	0.7	0.5	0.3	0.7	0.5	0.3	0
Working plane	0.2	0.2	0.2	0.2	0.2	0.2	0.2	0.2	0.2	0
ROOM INDEX	UTILIZATION FACTORS(PERCENT) $k(RI) \times RCR = 5$									
k = 0.60	88	82	79	88	82	78	87	81	78	75
0.80	95	90	86	94	89	86	93	88	85	82
1.00	99	94	90	98	93	90	96	93	89	85
1.25	103	98	95	102	97	94	100	96	93	89
1.50	106	101	98	104	100	97	102	98	96	91
2.00	108	104	101	106	103	100	103	100	98	92
2.50	110	106	103	108	105	102	104	102	100	93
3.00	111	108	105	109	106	104	105	103	101	94
4.00	113	111	108	111	109	107	107	105	104	96
5.00	114	112	111	112	110	109	108	106	105	97
ROOM INDEX	UF(total)									Direct
According to DIN EN 13032-2 2004			Suspended					SHRNOM = 1.25		

C Range: 0 - 360DEG
C Interval: 30.0DEG
Test Speed: HIGH
Temperature:25.3DEG
Operators:DAMIN
Test Date:2022-05-04

γ Range: 0 - 180DEG
γ Interval: 1.0DEG
Test System:EVERFINE GO-2000A_V1 SYSTEM V2.00.443
Humidity:65.0%
Test Distance:8.000m [K=0.7063]
Remarks:

ISOCANDELA DIAGRAM

Test:U:221.80V I:0.0590A P:10.800W PF:0.8270 Freq:50.00Hz		
Lamp Flux:1211.62x1 lm		
Name: NS10-φ86mm-10W	Type: LED	
MFR.: Lumega Group	DIM.: D86*H55mm	
	SUR.: D65mm	



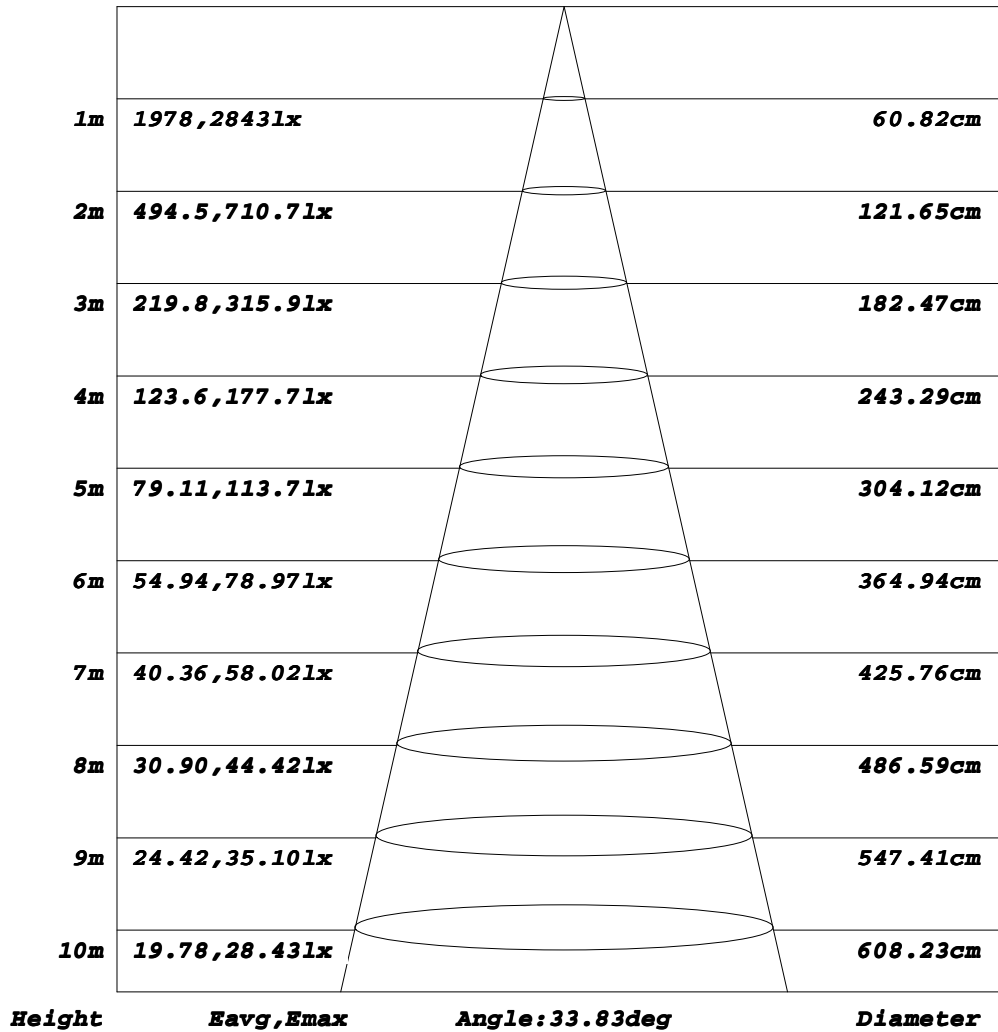
C Range: 0 - 360DEG
C Interval: 30.0DEG
Test Speed: HIGH
Temperature: 25.3DEG
Operators: DAMIN
Test Date: 2022-05-04

γ Range: 0 - 180DEG
γ Interval: 1.0DEG
Test System: EVERFINE GO-2000A_V1 SYSTEM V2.00.443
Humidity: 65.0%
Test Distance: 8.000m [K=0.7063]
Remarks:

AAI Figure

Test:U:221.80V I:0.0590A P:10.800W PF:0.8270 Freq:50.00Hz		
Lamp Flux:1211.62x1 lm		
Name: NS10-φ86mm-10W	Type: LED	
MFR.: Lumega Group	DIM.: D86*H55mm	
	SUR.: D65mm	

Flux out:580.8 lm



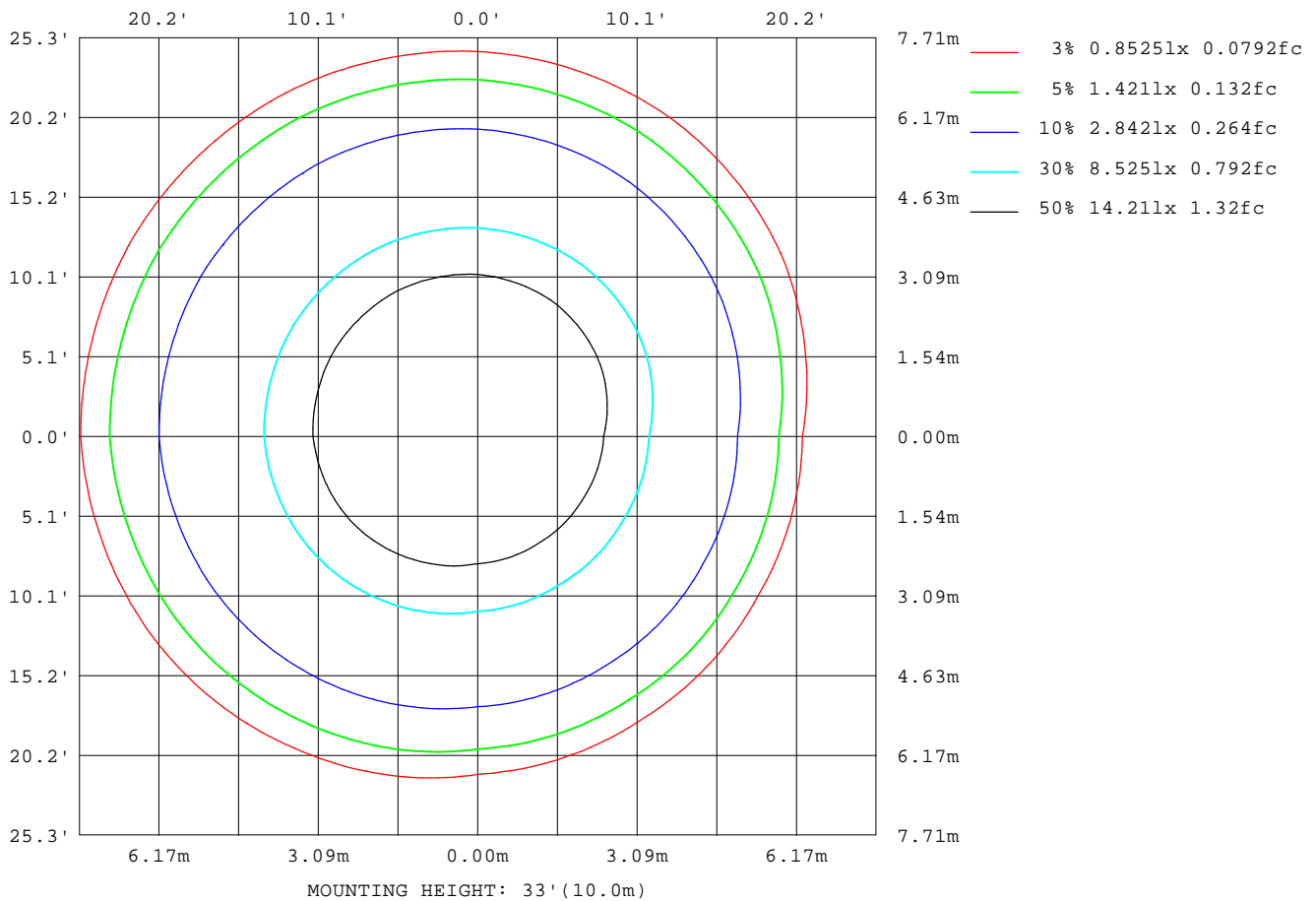
Note: The Curves indicate the illuminated area and the average illumination when the luminaire is at different distance.

C Range: 0 - 360DEG
C Interval: 30.0DEG
Test Speed: HIGH
Temperature: 25.3DEG
Operators: DAMIN
Test Date: 2022-05-04

γ Range: 0 - 180DEG
γ Interval: 1.0DEG
Test System: EVERFINE GO-2000A_V1 SYSTEM V2.00.443
Humidity: 65.0%
Test Distance: 8.000m [K=0.7063]
Remarks:

ISOLUX DIAGRAM

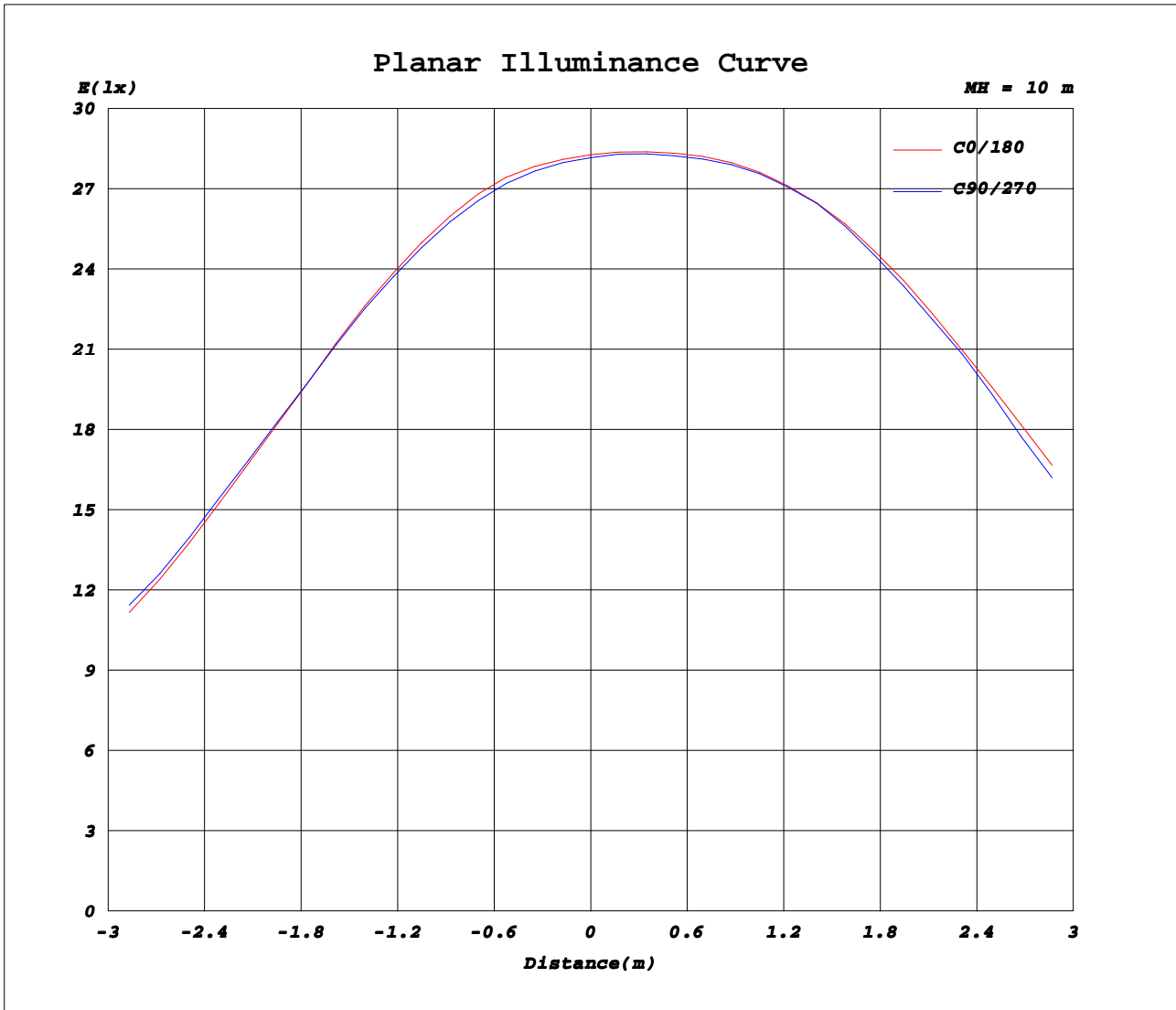
Test:U:221.80V I:0.0590A P:10.800W PF:0.8270 Freq:50.00Hz		
Lamp Flux:1211.62x1 lm		
Name: NS10-φ86mm-10W	Type: LED	
MFR.: Lumega Group	DIM.: D86*H55mm	
	SUR.: D65mm	



C Range: 0 - 360DEG
C Interval: 30.0DEG
Test Speed: HIGH
Temperature: 25.3DEG
Operators: DAMIN
Test Date: 2022-05-04

γ Range: 0 - 180DEG
γ Interval: 1.0DEG
Test System: EVERFINE GO-2000A_V1 SYSTEM V2.00.443
Humidity: 65.0%
Test Distance: 8.000m [K=0.7063]
Remarks:

Planar Illuminance Curve



C Range: 0 - 360DEG
C Interval: 30.0DEG
Test Speed: HIGH
Temperature: 25.3DEG
Operators: DAMIN
Test Date: 2022-05-04

γ Range: 0 - 180DEG
γ Interval: 1.0DEG
Test System: EVERFINE GO-2000A_V1 SYSTEM V2.00.443
Humidity: 65.0%
Test Distance: 8.000m [K=0.7063]
Remarks:

LUMINOUS DISTRIBUTION INTENSITY DATA

Test:U:221.80V I:0.0590A P:10.800W PF:0.8270 Freq:50.00Hz		
Lamp Flux:1211.62x1 lm		
Name: NS10-φ86mm-10W	Type: LED	
MFR.: Lumega Group	DIM.: D86*H55mm	
	SUR.: D65mm	

Table--1

UNIT: cd

C(DEG) γ (DEG)	0	30	60	90	120	150	180	210	240	270	300	330							
0	2827	2821	2818	2816	2820	2824	2827	2824	2820	2816	2818	2821							
5	2628	2594	2587	2607	2678	2758	2830	2851	2848	2822	2778	2714							
10	2063	2006	2006	2064	2232	2418	2583	2635	2630	2568	2454	2286							
15	1377	1319	1327	1400	1601	1821	2014	2065	2048	1966	1830	1633							
20	856	821	833	891	1044	1208	1350	1381	1360	1292	1189	1043							
25	504	497	516	563	665	771	860	875	855	803	730	630							
30	231	225	243	286	380	479	560	568	544	492	427	340							
35	54.9	46.0	55.9	84.8	153	225	285	291	273	237	191	130							
40	13.3	5.31	5.24	13.1	37.0	62.8	84.5	84.9	77.3	64.1	50.6	33.6							
45	11.0	10.3	10.2	10.8	12.7	14.7	16.5	17.0	16.8	16.1	14.9	13.2							
50	9.41	8.81	8.68	9.01	10.2	11.6	12.8	13.3	13.3	12.9	12.2	11.0							
55	8.07	7.56	7.44	7.73	8.75	9.92	11.0	11.4	11.4	11.0	10.4	9.40							
60	7.69	7.13	6.94	7.13	8.00	9.02	9.96	10.3	10.3	9.99	9.49	8.72							
65	5.26	4.36	4.12	4.54	6.17	8.04	9.76	10.3	10.4	9.84	8.83	7.30							
70	0.23	0.00	0.00	0.18	2.49	5.08	7.45	8.44	8.62	7.94	6.28	3.71							
75	0.18	0.05	0.04	0.14	0.46	0.82	1.14	1.25	1.25	1.14	0.93	0.61							
80	0.19	0.04	0.03	0.15	0.53	0.96	1.35	1.48	1.48	1.34	1.09	0.70							
85	0.25	0.08	0.07	0.21	0.64	1.12	1.55	1.70	1.70	1.55	1.26	0.83							
90	0.37	0.19	0.18	0.33	0.79	1.30	1.76	1.92	1.92	1.77	1.46	0.99							
95	0.54	0.37	0.35	0.51	0.97	1.50	1.97	2.14	2.14	1.98	1.67	1.19							
100	0.82	0.65	0.64	0.79	1.24	1.75	2.20	2.36	2.36	2.21	1.90	1.44							
105	1.26	1.09	1.08	1.21	1.61	2.07	2.48	2.62	2.62	2.48	2.21	1.80							
110	1.82	1.68	1.66	1.77	2.12	2.52	2.87	2.99	2.99	2.88	2.64	2.29							
115	2.50	2.38	2.36	2.46	2.76	3.10	3.40	3.51	3.52	3.42	3.22	2.91							
120	3.37	3.27	3.25	3.32	3.55	3.81	4.05	4.15	4.17	4.11	3.95	3.71							
125	4.50	4.43	4.41	4.45	4.56	4.70	4.83	4.91	4.94	4.93	4.84	4.70							
130	5.92	5.85	5.81	5.78	5.78	5.79	5.81	5.85	5.90	5.93	5.94	5.94							
135	7.58	7.52	7.45	7.36	7.24	7.11	7.02	7.02	7.05	7.13	7.25	7.39							
140	9.57	9.46	9.32	9.16	8.92	8.69	8.50	8.42	8.42	8.53	8.76	9.11							
145	11.7	11.5	11.3	11.1	10.8	10.5	10.3	10.1	10.0	10.1	10.4	11.0							
150	13.6	13.5	13.3	13.1	12.8	12.5	12.2	11.9	11.8	11.9	12.2	12.8							
155	15.3	15.2	15.0	14.8	14.5	14.3	14.0	13.8	13.6	13.6	13.9	14.5							
160	16.6	16.5	16.4	16.2	16.1	15.9	15.6	15.3	15.1	15.0	15.3	15.8							
165	17.5	17.4	17.3	17.2	17.1	17.0	16.8	16.5	16.2	16.1	16.3	16.8							
170	17.8	17.8	17.7	17.7	17.6	17.5	17.4	17.1	16.9	16.8	16.9	17.3							
175	18.1	18.0	17.9	17.8	17.7	17.6	17.5	17.3	17.2	17.1	17.3	17.6							
180	18.0	17.8	17.7	17.7	17.8	17.9	18.0	17.9	17.7	17.6	17.7	17.8							

C Range: 0 - 360DEG
C Interval: 30.0DEG
Test Speed: HIGH
Temperature:25.3DEG
Operators:DAMIN
Test Date:2022-05-04

γ Range: 0 - 180DEG
γ Interval: 1.0DEG
Test System:EVERFINE GO-2000A_V1 SYSTEM V2.00.443
Humidity:65.0%
Test Distance:8.000m [K=0.7063]
Remarks: