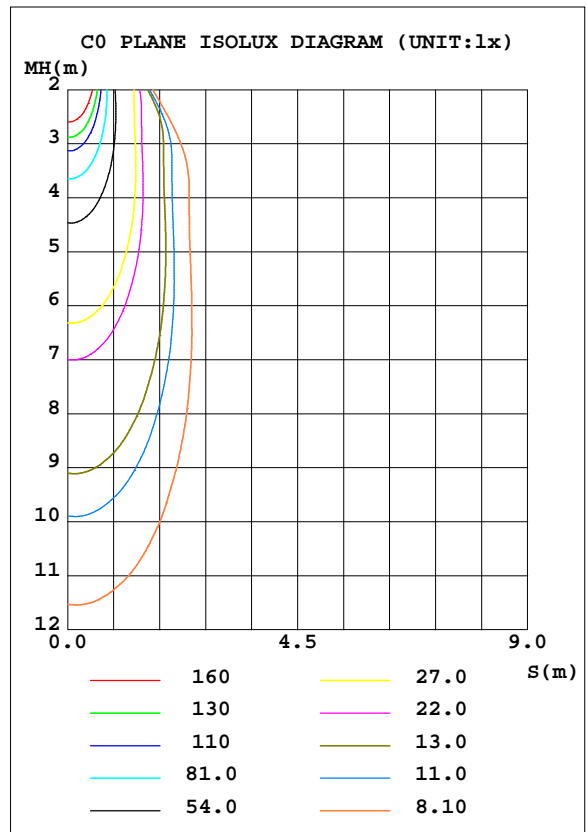
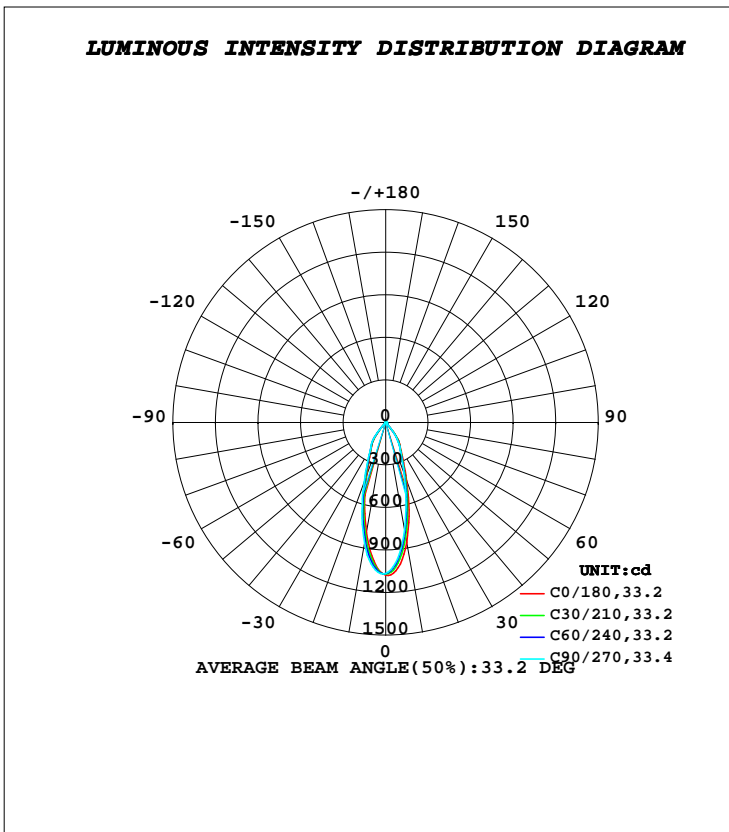


LUMINAIRE PHOTOMETRIC TEST REPORT

Test:U:221.70V I:0.0360A P:7.6000W PF:0.9380 Freq:50.00Hz		
Lamp Flux:521.878x1 lm		
Name: NS17-φ85MM-8W	Type: LED	
MFR.: Lumega Group	DIM.: D85*H55mm	
	SUR.: D45mm	

DATA OF LAMP		PHOTOMETRIC DATA Eff: 68.67 lm/W			
MODEL		I _{max} (cd)	1079	S/MH(C0/180)	0.57
NOMINAL POWER(W)	8	LOR(%)	100.0	S/MH(C90/270)	0.51
RATED VOLTAGE(V)	220	TOTAL FLUX(lm)	521.88	η UP, DN(C0-180)	1.3,46.8
NOMINAL FLUX(lm)	521.878	CIE CLASS	DIRECT	η UP, DN(C180-360)	1.5,50.3
LAMPS INSIDE	1	η up(%)	2.9	CIBSE SHR NOM	0.50
TEST VOLTAGE(V)	221.6	η down(%)	97.1	CIBSE SHR MAX	0.55



C Range: 0 - 360DEG
C Interval: 30.0DEG
Test Speed: HIGH
Temperature:25.3DEG
Operators:DAMIN
Test Date:2022-05-14

γ Range: 0 - 180DEG
γ Interval: 1.0DEG
Test System:EVERFINE GO-2000A_V1 SYSTEM V2.00.443
Humidity:65.0%
Test Distance:8.000m [K=0.7063]
Remarks:

ZONAL FLUX DIAGRAM

ZONAL FLUX DIAGRAM:

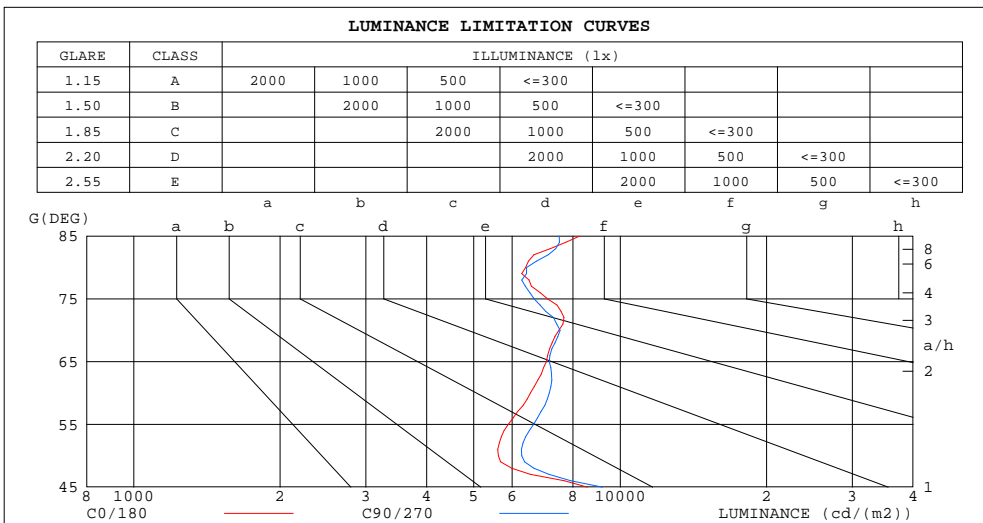
γ	C0	C45	C90	C135	C180	C225	C270	C315	γ	Φ zone	Φ total	%lum,lamp
10	858.5	801.7	768.9	769.4	788.0	826.3	862.0	868.9	0- 10	89.44	89.44	17.1,17.1
20	434.7	400.6	380.9	380.7	392.6	421.3	447.3	448.5	10- 20	166.0	255.4	48.9,48.9
30	210.9	203.3	199.7	202.0	206.5	212.2	216.5	215.4	20- 30	131.9	387.3	74.2,74.2
40	65.72	57.61	53.72	55.64	60.63	69.39	76.22	73.87	30- 40	90.89	478.2	91.6,91.6
50	5.778	6.137	6.452	6.769	6.925	6.583	6.147	5.917	40- 50	13.55	491.7	94.2,94.2
60	5.227	5.470	5.722	6.055	6.260	5.984	5.606	5.386	50- 60	5.355	497.1	95.3,95.3
70	4.095	4.050	4.119	4.398	4.658	4.637	4.510	4.332	60- 70	4.985	502.1	96.2,96.2
80	1.775	1.697	1.784	2.171	2.534	2.497	2.316	2.081	70- 80	3.375	505.5	96.9,96.9
90	0.1936	0.1222	0.1895	0.4958	0.8103	0.9181	0.8806	0.6212	80- 90	1.502	507.0	97.1,97.1
100	0.3539	0.3053	0.3873	0.7010	1.008	1.063	0.9795	0.7331	90-100	0.6441	507.6	97.3,97.3
110	0.7349	0.7017	0.7891	1.094	1.385	1.421	1.325	1.088	100-110	0.9130	508.5	97.4,97.4
120	1.336	1.318	1.411	1.708	1.985	1.997	1.884	1.660	110-120	1.335	509.9	97.7,97.7
130	2.247	2.250	2.339	2.595	2.823	2.798	2.671	2.489	120-130	1.847	511.7	98,98
140	3.555	3.592	3.677	3.866	4.012	3.904	3.739	3.637	130-140	2.392	514.1	98.5,98.5
150	4.926	4.955	5.020	5.169	5.272	5.122	4.943	4.900	140-150	2.753	516.8	99,99
160	6.080	6.071	6.102	6.229	6.308	6.105	5.899	5.924	150-160	2.568	519.4	99.5,99.5
170	6.829	6.751	6.716	6.770	6.799	6.614	6.460	6.566	160-170	1.818	521.2	99.9,99.9
180	7.009	6.849	6.794	6.925	7.049	6.906	6.762	6.827	170-180	0.6461	521.9	100,100
DEG	LUMINOUS INTENSITY:cd									UNIT:lm		

C Range: 0 - 360DEG
C Interval: 30.0DEG
Test Speed: HIGH
Temperature:25.3DEG
Operators:DAMIN
Test Date:2022-05-14

γ Range: 0 - 180DEG
 γ Interval: 1.0DEG
Test System:EVERFINE GO-2000A_V1 SYSTEM V2.00.443
Humidity:65.0%
Test Distance:8.000m [K=0.7063]
Remarks:

LUMINANCE LIMITATION CURVES

Test:U:221.70V I:0.0360A P:7.6000W PF:0.9380 Freq:50.00Hz		
Lamp Flux:521.878x1 lm		
Name: NS17-φ85MM-8W	Type: LED	
MFR.: Lumega Group	DIM.: D85*H55mm	
	SUR.: D45mm	



LUMINANCE cd/(m2)		
G(DEG)	C0/180	C90/270
85	8238	7492
80	6388	6421
75	7092	6662
70	7483	7527
65	7055	7152
60	6533	7153
55	5887	6639
50	5618	6273
45	8560	9188

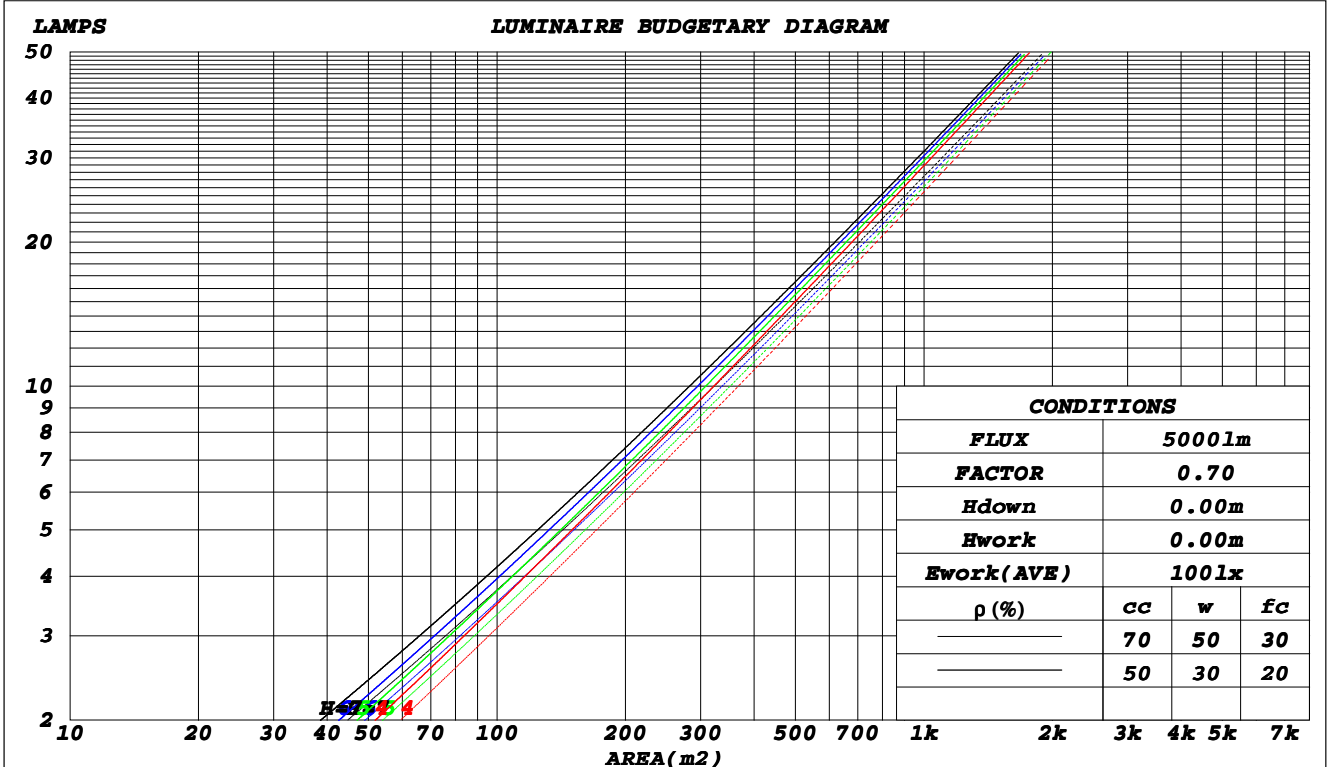
C Range: 0 - 360DEG
C Interval: 30.0DEG
Test Speed: HIGH
Temperature: 25.3DEG
Operators: DAMIN
Test Date: 2022-05-14

γ Range: 0 - 180DEG
γ Interval: 1.0DEG
Test System: EVERFINE GO-2000A_V1 SYSTEM V2.00.443
Humidity: 65.0%
Test Distance: 8.000m [K=0.7063]
Remarks:

CU AND LUMINAIRE BUDGETARY ESTIMATE DIAGRAM

Test:U:221.70V I:0.0360A P:7.6000W PF:0.9380 Freq:50.00Hz		
Lamp Flux:521.878x1 lm		
Name: NS17-φ85MM-8W	Type: LED	
MFR.: Lumega Group	DIM.: D85*H55mm	
	SUR.: D45mm	

ρcc	80%			70%			50%			30%			10%			0
ρw	50%	30%	10%	50%	30%	10%	50%	30%	10%	50%	30%	10%	50%	30%	10%	0
ρfc	20%			20%			20%			20%			20%			0
RCR	RCR:Room Cavity Ratio						Coefficients of Utilization(CU)									
0.0	1.18	1.18	1.18	1.15	1.15	1.15	1.10	1.10	1.10	1.04	1.04	1.04	.99	.99	.99	.97
1.0	1.10	1.08	1.06	1.08	1.06	1.04	1.03	1.01	.00	.99	.98	.96	.95	.94	.93	.91
2.0	1.03	.99	.96	1.01	.97	.94	.97	.94	.92	.94	.92	.90	.91	.89	.87	.86
3.0	.96	.92	.88	.95	.91	.87	.92	.88	.85	.89	.86	.84	.87	.84	.82	.80
4.0	.91	.86	.82	.89	.85	.81	.87	.83	.80	.85	.81	.78	.83	.80	.77	.76
5.0	.86	.80	.76	.85	.79	.76	.82	.78	.75	.81	.77	.74	.79	.75	.73	.71
6.0	.81	.75	.71	.80	.75	.71	.78	.74	.70	.77	.73	.70	.75	.72	.69	.68
7.0	.77	.71	.67	.76	.71	.67	.75	.70	.66	.73	.69	.66	.72	.68	.65	.64
8.0	.73	.67	.64	.72	.67	.63	.71	.66	.63	.70	.66	.63	.69	.65	.62	.61
9.0	.70	.64	.60	.69	.64	.60	.68	.63	.60	.67	.63	.60	.66	.62	.59	.58
10.0	.66	.61	.57	.66	.61	.57	.65	.60	.57	.64	.60	.57	.63	.59	.56	.55



C Range: 0 - 360DEG
 C Interval: 30.0DEG
 Test Speed: HIGH
 Temperature:25.3DEG
 Operators:DAMIN
 Test Date:2022-05-14

γ Range: 0 - 180DEG
 γ Interval: 1.0DEG
 Test System:EVERFINE GO-2000A_V1 SYSTEM V2.00.443
 Humidity:65.0%
 Test Distance:8.000m [K=0.7063]
 Remarks:

WEC AND CCEC

Test:U:221.70V I:0.0360A P:7.6000W PF:0.9380 Freq:50.00Hz		
Lamp Flux:521.878x1 lm		
Name: NS17-φ85MM-8W	Type: LED	
MFR.: Lumega Group	DIM.: D85*H55mm	
	SUR.: D45mm	

ρ _{cc}	80%			70%			50%			30%			10%			0
ρ _w	50%	30%	10%	50%	30%	10%	50%	30%	10%	50%	30%	10%	50%	30%	10%	0
ρ _{fc}	20%			20%			20%			20%			20%			0
RCR	RCR:Room Cavity Ratio						Wall Exitance Coefficients(WEC)									
0.0																
1.0	.176	.100	.032	.168	.096	.030	.154	.088	.028	.141	.081	.026	.129	.075	.024	
2.0	.166	.091	.028	.159	.088	.027	.147	.082	.025	.136	.076	.024	.126	.071	.022	
3.0	.156	.083	.025	.150	.081	.024	.140	.076	.023	.130	.071	.022	.122	.067	.021	
4.0	.147	.077	.022	.142	.075	.022	.133	.071	.021	.125	.067	.020	.117	.064	.019	
5.0	.139	.071	.021	.135	.069	.020	.127	.066	.020	.120	.063	.019	.113	.060	.018	
6.0	.132	.066	.019	.129	.065	.019	.122	.062	.018	.115	.060	.018	.109	.057	.017	
7.0	.126	.062	.018	.123	.061	.017	.117	.059	.017	.111	.057	.017	.105	.055	.016	
8.0	.120	.059	.017	.117	.058	.016	.112	.056	.016	.107	.054	.016	.102	.052	.015	
9.0	.115	.056	.016	.112	.055	.015	.107	.053	.015	.103	.051	.015	.098	.050	.014	
10.0	.110	.053	.015	.108	.052	.015	.103	.051	.014	.099	.049	.014	.095	.048	.014	

ρ _{cc}	80%			70%			50%			30%			10%			0
ρ _w	50%	30%	10%	50%	30%	10%	50%	30%	10%	50%	30%	10%	50%	30%	10%	0
ρ _{fc}	20%			20%			20%			20%			20%			0
RCR	RCR:Room Cavity Ratio						Ceiling Cavity Exitance Coefficients(CCEC)									
0.0	.212	.212	.212	.181	.181	.181	.124	.124	.124	.071	.071	.071	.023	.023	.023	
1.0	.193	.179	.167	.165	.154	.144	.113	.106	.099	.065	.061	.058	.021	.020	.019	
2.0	.178	.155	.135	.152	.133	.117	.104	.092	.082	.060	.054	.048	.019	.017	.016	
3.0	.165	.136	.113	.141	.117	.098	.097	.081	.069	.056	.048	.040	.018	.015	.013	
4.0	.154	.121	.096	.132	.105	.083	.091	.073	.059	.053	.043	.035	.017	.014	.011	
5.0	.145	.109	.083	.125	.095	.072	.086	.066	.051	.050	.039	.030	.016	.013	.010	
6.0	.137	.100	.073	.118	.087	.064	.081	.061	.045	.047	.036	.027	.015	.012	.009	
7.0	.130	.092	.066	.112	.080	.057	.078	.056	.041	.045	.033	.024	.015	.011	.008	
8.0	.125	.086	.060	.107	.075	.052	.074	.052	.037	.043	.031	.022	.014	.010	.007	
9.0	.119	.081	.055	.103	.070	.048	.071	.049	.034	.041	.029	.020	.013	.010	.007	
10.0	.115	.076	.051	.099	.066	.044	.069	.047	.032	.040	.028	.019	.013	.009	.006	

C Range: 0 - 360DEG
C Interval: 30.0DEG
Test Speed: HIGH
Temperature:25.3DEG
Operators:DAMIN
Test Date:2022-05-14

γ Range: 0 - 180DEG
γ Interval: 1.0DEG
Test System:EVERFINE GO-2000A_V1 SYSTEM V2.00.443
Humidity:65.0%
Test Distance:8.000m [K=0.7063]
Remarks:

UGR(Unified Glare Rating) Table

Test:U:221.70V I:0.0360A P:7.6000W PF:0.9380 Freq:50.00Hz		
Lamp Flux:521.878x1 lm		
Name: NS17-φ85MM-8W	Type: LED	
MFR.: Lumega Group	DIM.: D85*H55mm	
	SUR.: D45mm	

ceiling/cavity	0.7	0.7	0.5	0.5	0.3	0.7	0.7	0.5	0.5	0.3
walls	0.5	0.3	0.5	0.3	0.3	0.5	0.3	0.5	0.3	0.3
working plane	0.2	0.2	0.2	0.2	0.2	0.2	0.2	0.2	0.2	0.2
Room dimensions	Viewed crosswise					Viewed endwise				
x = 2H y = 2H	18.9	19.7	19.1	20.0	20.2	18.5	19.3	18.7	19.5	19.8
3H	18.9	19.7	19.2	20.0	20.2	18.6	19.4	18.9	19.6	19.9
4H	19.0	19.8	19.3	20.0	20.3	18.6	19.4	19.0	19.7	19.9
6H	19.0	19.7	19.4	20.0	20.3	18.7	19.4	19.0	19.7	20.0
8H	19.1	19.7	19.4	20.0	20.4	18.7	19.4	19.1	19.7	20.0
12H	19.1	19.7	19.4	20.0	20.4	18.7	19.4	19.1	19.7	20.0
4H 2H	18.7	19.5	19.0	19.7	20.0	18.3	19.1	18.6	19.3	19.6
3H	18.9	19.5	19.2	19.8	20.2	18.5	19.2	18.9	19.5	19.8
4H	19.0	19.6	19.4	19.9	20.3	18.7	19.2	19.0	19.6	20.0
6H	19.1	19.6	19.5	20.0	20.4	18.8	19.3	19.2	19.7	20.1
8H	19.1	19.6	19.6	20.0	20.5	18.8	19.3	19.3	19.7	20.1
12H	19.2	19.7	19.7	20.1	20.5	18.9	19.3	19.4	19.8	20.2
8H 4H	19.0	19.4	19.4	19.8	20.3	18.6	19.1	19.1	19.5	19.9
6H	19.1	19.5	19.6	20.0	20.4	18.8	19.2	19.3	19.6	20.1
8H	19.2	19.6	19.7	20.0	20.5	18.9	19.3	19.4	19.7	20.2
12H	19.3	19.6	19.8	20.1	20.7	19.1	19.4	19.6	19.8	20.4
12H 4H	18.9	19.4	19.4	19.8	20.2	18.6	19.0	19.0	19.5	19.9
6H	19.1	19.4	19.6	19.9	20.4	18.8	19.1	19.3	19.6	20.1
8H	19.2	19.5	19.7	20.0	20.5	18.9	19.2	19.5	19.7	20.3
Variations with the observer position at spacings(CIE Pub.117):										
S = 1.0H	+ 3.4 / - 3.9					+ 3.0 / - 3.2				
1.5H	+ 5.9 / - 3.8					+ 5.5 / - 3.2				
2.0H	+ 0.2 / - 0.4					+ 0.2 / - 0.3				

CIE Pub.117, 521.9 lm Total Lamp Luminous Flux Corrected (8log(F/F0) = -2.3)
 Area: 0.0016 m2

C Range: 0 - 360DEG
C Interval: 30.0DEG
Test Speed: HIGH
Temperature:25.3DEG
Operators:DAMIN
Test Date:2022-05-14

γ Range: 0 - 180DEG
γ Interval: 1.0DEG
Test System:EVERFINE GO-2000A_V1 SYSTEM V2.00.443
Humidity:65.0%
Test Distance:8.000m [K=0.7063]
Remarks:

UTILIZATION FACTORS TABLE

Test:U:221.70V I:0.0360A P:7.6000W PF:0.9380 Freq:50.00Hz Lamp Flux:521.878x1 lm		
Name: NS17-φ85MM-8W	Type: LED	
MFR.: Lumega Group	DIM.: D85*H55mm	
	SUR.: D45mm	

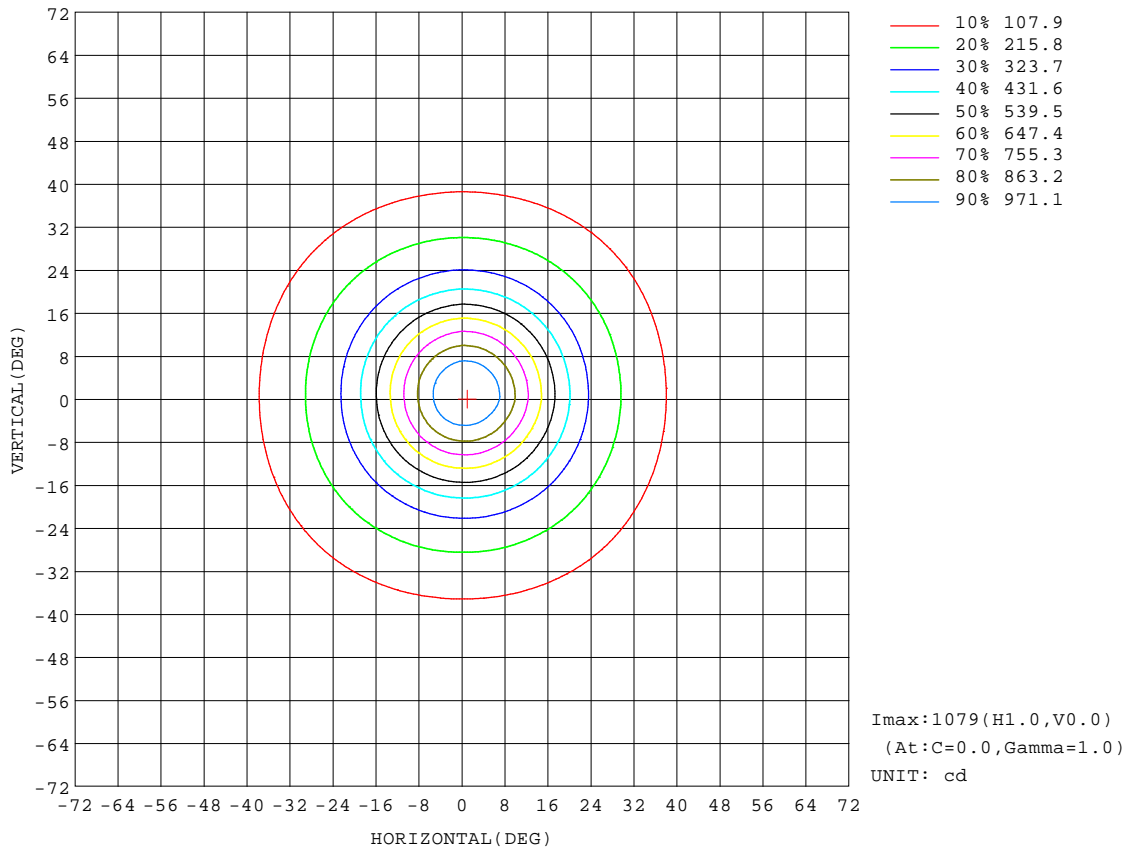
REFLECTANCE										
Ceiling	0.8	0.8	0.8	0.7	0.7	0.7	0.5	0.5	0.5	0
Walls	0.7	0.5	0.3	0.7	0.5	0.3	0.7	0.5	0.3	0
Working plane	0.2	0.2	0.2	0.2	0.2	0.2	0.2	0.2	0.2	0
ROOM INDEX	UTILIZATION FACTORS(PERCENT) $k(RI) \times RCR = 5$									
k = 0.60	86	80	76	86	80	76	85	79	76	72
0.80	94	88	84	93	87	84	91	87	83	79
1.00	98	92	89	97	92	88	95	91	88	83
1.25	102	97	93	101	96	92	98	94	91	87
1.50	105	100	96	103	99	96	101	97	94	89
2.00	107	103	100	106	102	99	102	99	97	91
2.50	109	105	102	107	104	101	104	101	99	92
3.00	111	107	104	109	105	103	105	102	100	93
4.00	113	110	108	110	108	106	106	104	103	95
5.00	114	112	110	112	110	108	107	106	104	96
ROOM INDEX	UF(total)									Direct
According to DIN EN 13032-2 2004			Suspended					SHRNOM = 1.25		

C Range: 0 - 360DEG
C Interval: 30.0DEG
Test Speed: HIGH
Temperature:25.3DEG
Operators:DAMIN
Test Date:2022-05-14

γ Range: 0 - 180DEG
γ Interval: 1.0DEG
Test System:EVERFINE GO-2000A_V1 SYSTEM V2.00.443
Humidity:65.0%
Test Distance:8.000m [K=0.7063]
Remarks:

ISOCANDELA DIAGRAM

Test:U:221.70V I:0.0360A P:7.6000W PF:0.9380 Freq:50.00Hz		
Lamp Flux:521.878x1 lm		
Name: NS17-φ85MM-8W	Type: LED	
MFR.: Lumega Group	DIM.: D85*H55mm	
	SUR.: D45mm	



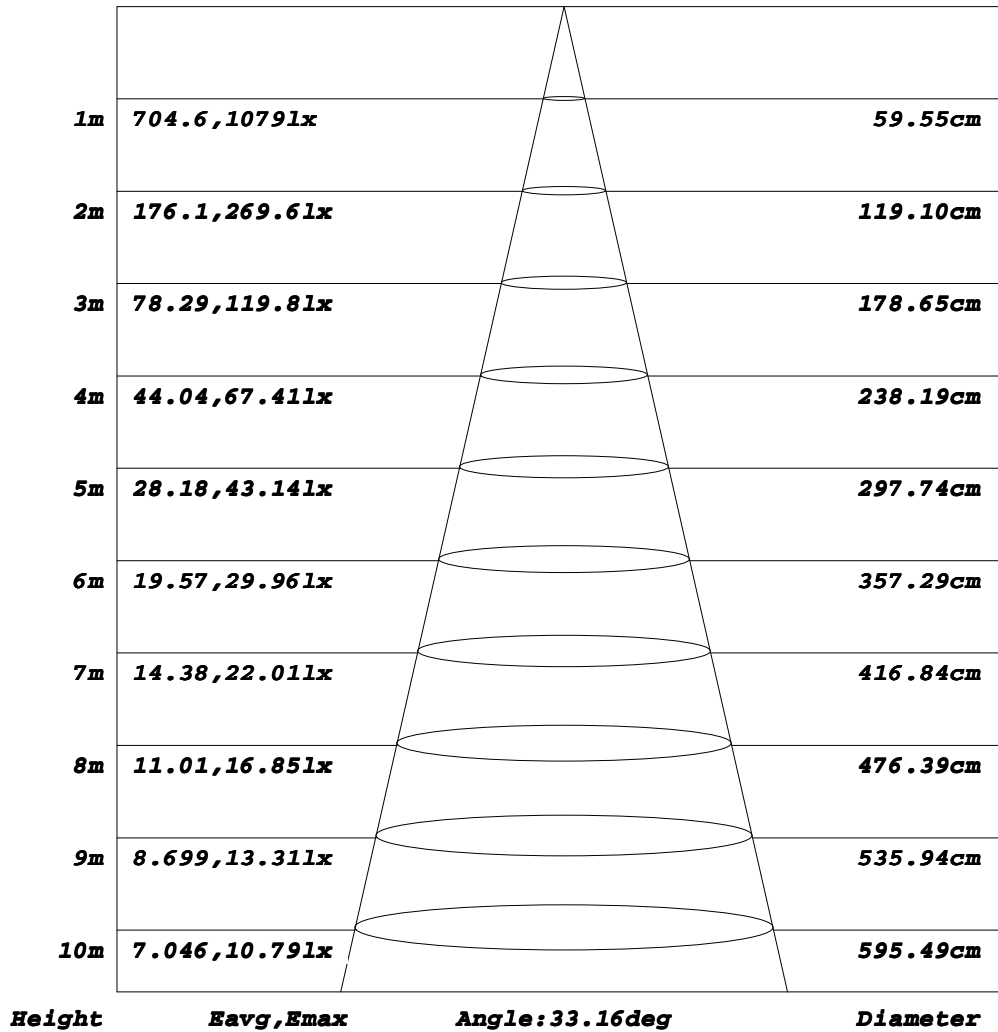
C Range: 0 - 360DEG
C Interval: 30.0DEG
Test Speed: HIGH
Temperature:25.3DEG
Operators:DAMIN
Test Date:2022-05-14

γ Range: 0 - 180DEG
γ Interval: 1.0DEG
Test System:EVERFINE GO-2000A_V1 SYSTEM V2.00.443
Humidity:65.0%
Test Distance:8.000m [K=0.7063]
Remarks:

AAI Figure

Test:U:221.70V I:0.0360A P:7.6000W PF:0.9380 Freq:50.00Hz		
Lamp Flux:521.878x1 lm		
Name: NS17-φ85MM-8W	Type: LED	
MFR.: Lumega Group	DIM.: D85*H55mm	
	SUR.: D45mm	

Flux out:206.9 lm



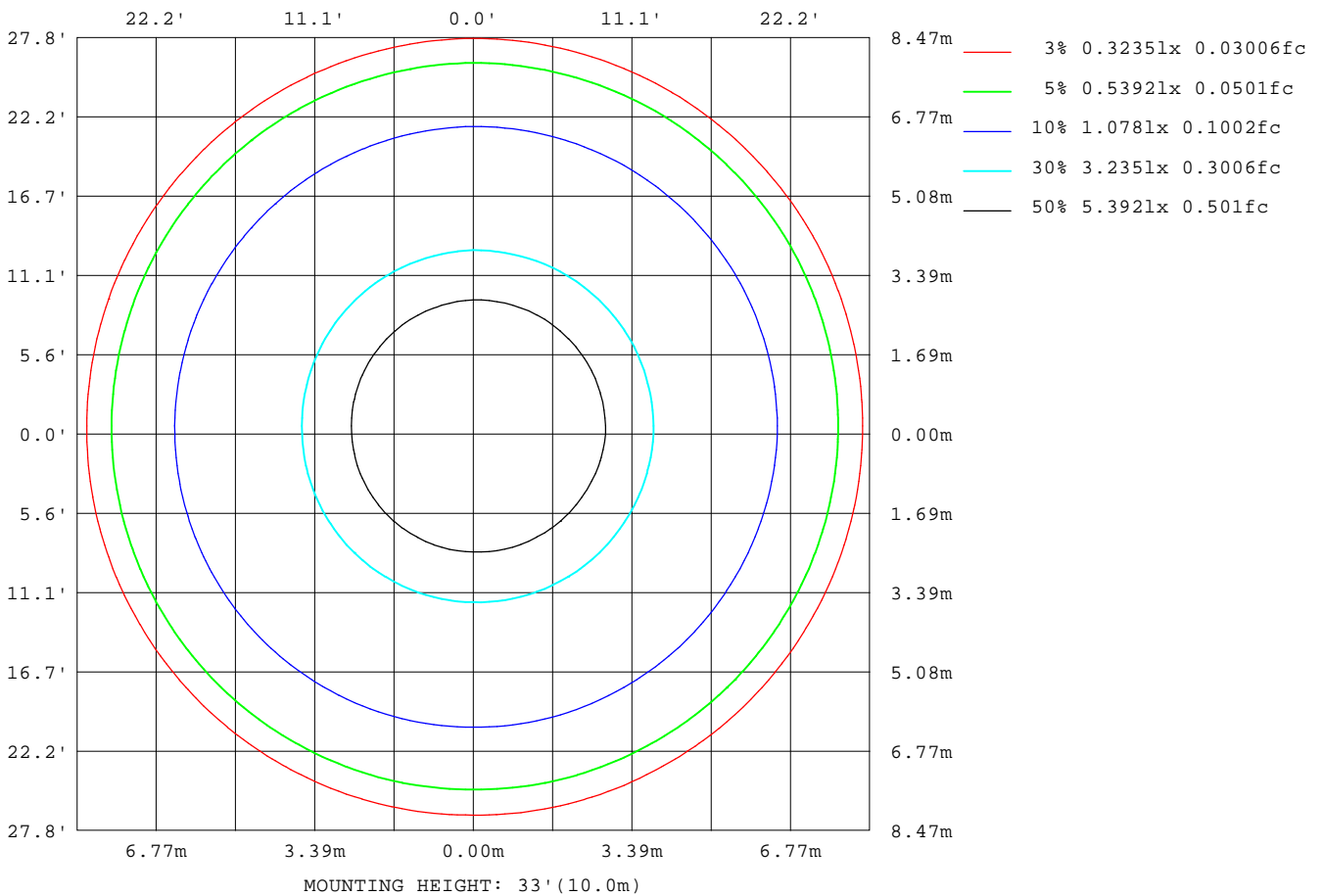
Note: The Curves indicate the illuminated area and the average illumination when the luminaire is at different distance.

C Range: 0 - 360DEG
C Interval: 30.0DEG
Test Speed: HIGH
Temperature: 25.3DEG
Operators: DAMIN
Test Date: 2022-05-14

γ Range: 0 - 180DEG
γ Interval: 1.0DEG
Test System: EVERFINE GO-2000A_V1 SYSTEM V2.00.443
Humidity: 65.0%
Test Distance: 8.000m [K=0.7063]
Remarks:

ISOLUX DIAGRAM

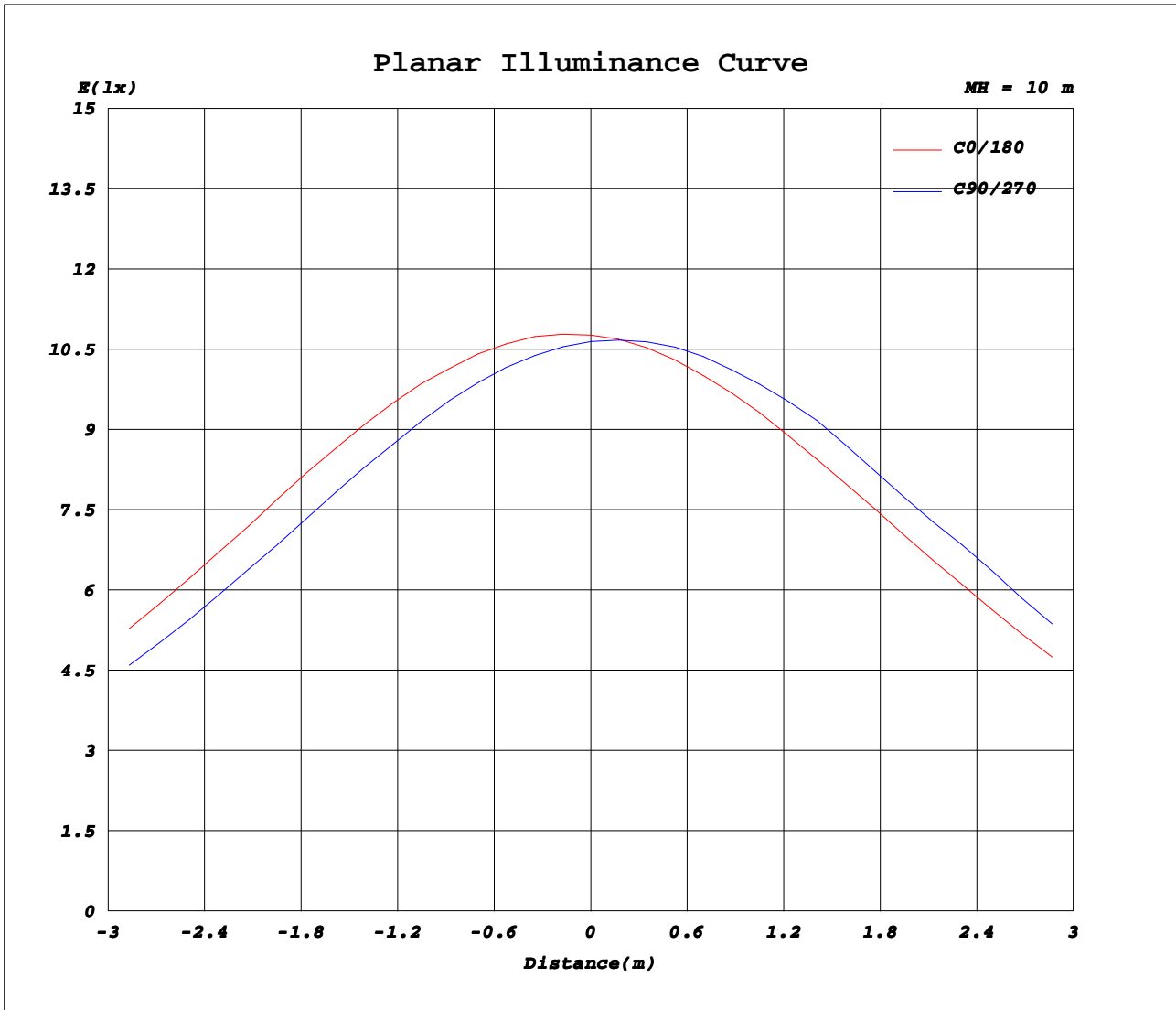
Test:U:221.70V I:0.0360A P:7.6000W PF:0.9380 Freq:50.00Hz		
Lamp Flux:521.878x1 lm		
Name: NS17-φ85MM-8W	Type: LED	
MFR.: Lumega Group	DIM.: D85*H55mm	
	SUR.: D45mm	



C Range: 0 - 360DEG
C Interval: 30.0DEG
Test Speed: HIGH
Temperature: 25.3DEG
Operators: DAMIN
Test Date: 2022-05-14

γ Range: 0 - 180DEG
γ Interval: 1.0DEG
Test System: EVERFINE GO-2000A_V1 SYSTEM V2.00.443
Humidity: 65.0%
Test Distance: 8.000m [K=0.7063]
Remarks:

Planar Illuminance Curve



C Range: 0 - 360DEG
C Interval: 30.0DEG
Test Speed: HIGH
Temperature: 25.3DEG
Operators: DAMIN
Test Date: 2022-05-14

γ Range: 0 - 180DEG
γ Interval: 1.0DEG
Test System: EVERFINE GO-2000A_V1 SYSTEM V2.00.443
Humidity: 65.0%
Test Distance: 8.000m [K=0.7063]
Remarks:

LUMINOUS DISTRIBUTION INTENSITY DATA

Test:U:221.70V I:0.0360A P:7.6000W PF:0.9380 Freq:50.00Hz Lamp Flux:521.878x1 lm		
Name: NS17-φ85MM-8W	Type: LED	
MFR.: Lumega Group	DIM.: D85*H55mm	
	SUR.: D45mm	

Table--1

UNIT: cd

C(DEG) γ (DEG)	0	30	60	90	120	150	180	210	240	270	300	330							
0	1077	1070	1066	1065	1068	1073	1077	1073	1068	1065	1066	1070							
5	1027	998	978	966	965	970	980	995	1010	1024	1029	1030							
10	859	817	787	769	766	773	788	813	839	862	869	868							
15	638	600	573	557	555	561	576	601	628	650	655	651							
20	435	410	392	381	379	383	393	411	431	447	451	446							
25	289	277	268	263	262	265	270	281	292	301	302	298							
30	211	205	201	200	201	203	207	210	214	216	216	214							
35	162	151	143	139	140	143	148	155	162	168	168	166							
40	65.7	59.6	55.6	53.7	54.4	56.9	60.6	66.6	72.2	76.2	75.6	72.1							
45	9.68	9.94	10.2	10.4	10.6	10.8	11.0	10.9	10.8	10.6	10.4	10.1							
50	5.78	6.02	6.25	6.45	6.68	6.85	6.92	6.72	6.44	6.15	5.98	5.86							
55	5.40	5.66	5.89	6.09	6.32	6.47	6.53	6.30	5.99	5.68	5.53	5.43							
60	5.23	5.39	5.55	5.72	5.96	6.15	6.26	6.10	5.87	5.61	5.45	5.32							
65	4.77	4.74	4.76	4.84	5.02	5.20	5.35	5.32	5.22	5.09	4.99	4.89							
70	4.09	4.05	4.05	4.12	4.30	4.50	4.66	4.66	4.61	4.51	4.40	4.26							
75	2.94	2.78	2.72	2.76	2.97	3.22	3.45	3.54	3.55	3.50	3.38	3.19							
80	1.77	1.70	1.70	1.78	2.04	2.31	2.53	2.54	2.46	2.32	2.17	1.99							
85	1.15	1.01	0.98	1.04	1.30	1.59	1.85	1.89	1.85	1.74	1.60	1.40							
90	0.19	0.12	0.12	0.19	0.39	0.61	0.81	0.91	0.93	0.88	0.74	0.51							
95	0.25	0.19	0.19	0.27	0.47	0.70	0.90	0.96	0.95	0.87	0.73	0.53							
100	0.35	0.30	0.31	0.39	0.59	0.81	1.01	1.07	1.06	0.98	0.84	0.63							
105	0.52	0.47	0.48	0.56	0.76	0.98	1.17	1.22	1.20	1.12	0.98	0.78							
110	0.73	0.69	0.71	0.79	0.99	1.20	1.39	1.43	1.41	1.32	1.19	0.99							
115	1.01	0.97	0.99	1.07	1.27	1.48	1.66	1.70	1.67	1.58	1.44	1.25							
120	1.34	1.31	1.33	1.41	1.60	1.81	1.98	2.02	1.98	1.88	1.75	1.57							
125	1.74	1.72	1.74	1.82	2.01	2.20	2.36	2.38	2.34	2.24	2.12	1.95							
130	2.25	2.23	2.27	2.34	2.51	2.68	2.82	2.83	2.77	2.67	2.56	2.42							
135	2.85	2.86	2.90	2.97	3.11	3.25	3.35	3.33	3.26	3.16	3.07	2.97							
140	3.55	3.57	3.61	3.68	3.81	3.93	4.01	3.95	3.85	3.74	3.67	3.61							
145	4.26	4.29	4.33	4.39	4.50	4.60	4.66	4.59	4.47	4.36	4.30	4.27							
150	4.93	4.94	4.97	5.02	5.12	5.22	5.27	5.18	5.06	4.94	4.90	4.90							
155	5.52	5.52	5.54	5.58	5.68	5.77	5.82	5.72	5.58	5.46	5.43	5.45							
160	6.08	6.07	6.07	6.10	6.19	6.27	6.31	6.18	6.03	5.90	5.89	5.95							
165	6.54	6.51	6.49	6.50	6.57	6.63	6.66	6.53	6.38	6.26	6.28	6.37							
170	6.83	6.77	6.73	6.72	6.75	6.79	6.80	6.68	6.55	6.46	6.50	6.63							
175	7.02	6.95	6.89	6.85	6.86	6.87	6.86	6.75	6.65	6.58	6.65	6.80							
180	7.01	6.89	6.81	6.79	6.88	6.97	7.05	6.96	6.85	6.76	6.79	6.87							

C Range: 0 - 360DEG
C Interval: 30.0DEG
Test Speed: HIGH
Temperature:25.3DEG
Operators:DAMIN
Test Date:2022-05-14

γ Range: 0 - 180DEG
γ Interval: 1.0DEG
Test System:EVERFINE GO-2000A_V1 SYSTEM V2.00.443
Humidity:65.0%
Test Distance:8.000m [K=0.7063]
Remarks: