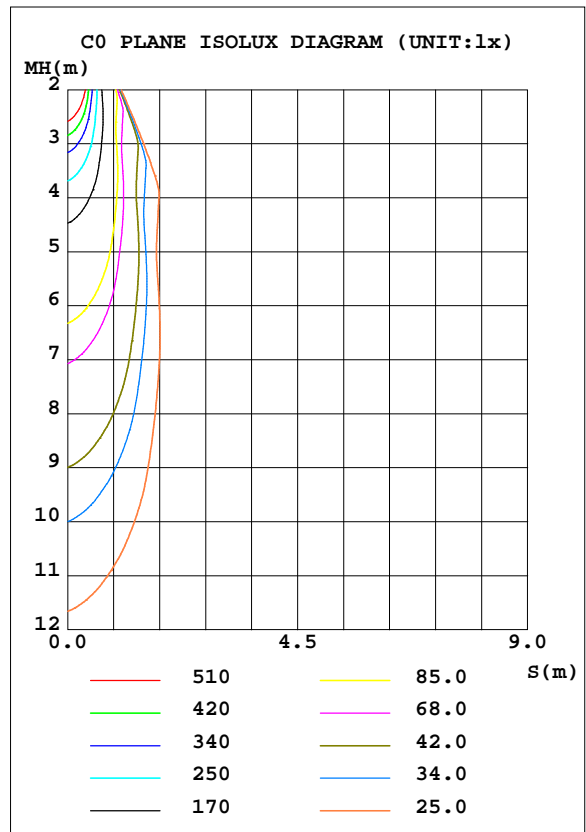
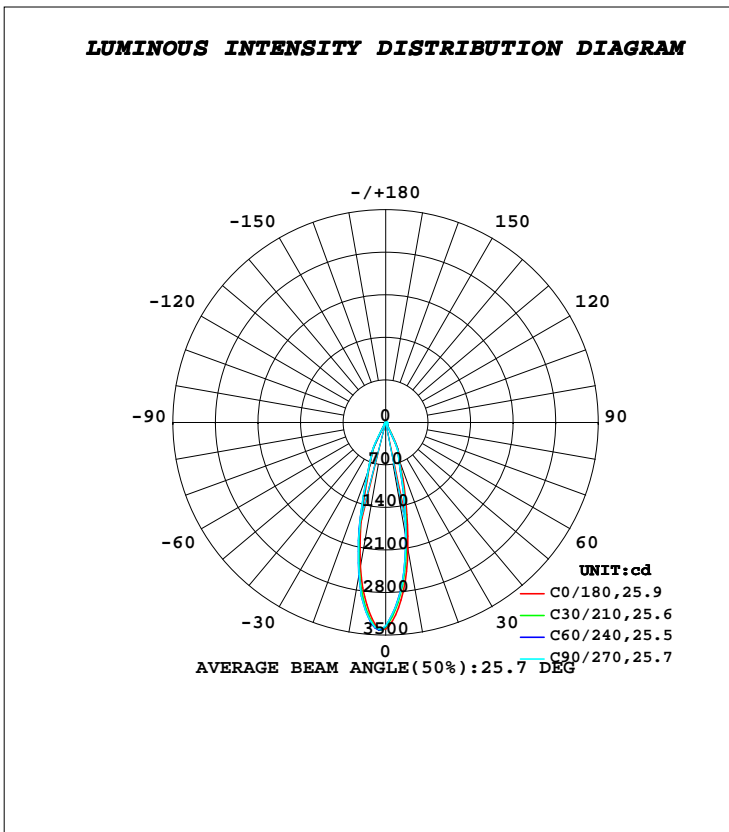


LUMINAIRE PHOTOMETRIC TEST REPORT

Test:U:221.80V I:0.0690A P:14.400W PF:0.9460 Freq:50.00Hz		
Lamp Flux:939.288x1 lm		
Name: NS22-φ90MM-15W	Type: LED	
MFR.: Lumega Group	DIM.: φ90*130mm	
	SUR.: φ85mm	

DATA OF LAMP		PHOTOMETRIC DATA Eff: 65.23 lm/W			
MODEL		I _{max} (cd)	3418	S/MH(C0/180)	0.41
NOMINAL POWER(W)	15	LOR(%)	100.0	S/MH(C90/270)	0.38
RATED VOLTAGE(V)	220	TOTAL FLUX(lm)	939.29	η UP, DN(C0-180)	1.4, 43.8
NOMINAL FLUX(lm)	939.288	CIE CLASS	DIRECT	η UP, DN(C180-360)	1.6, 53.2
LAMPS INSIDE	1	η up(%)	3.0	CIBSE SHR NOM	0.00
TEST VOLTAGE(V)	221.6	η down(%)	97.0	CIBSE SHR MAX	0.30



C Range: 0 - 360DEG
C Interval: 30.0DEG
Test Speed: HIGH
Temperature: 25.3DEG
Operators: DAMIN
Test Date: 2022-05-28

γ Range: 0 - 180DEG
γ Interval: 1.0DEG
Test System: EVERFINE GO-2000A_V1 SYSTEM V2.00.443
Humidity: 65.0%
Test Distance: 8.000m [K=0.7063]
Remarks:

ZONAL FLUX DIAGRAM

ZONAL FLUX DIAGRAM:

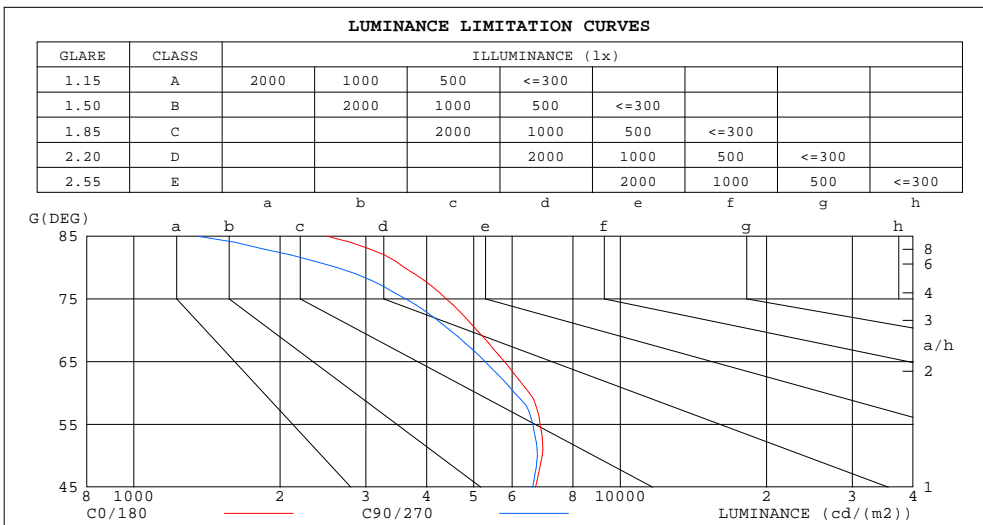
γ	C0	C45	C90	C135	C180	C225	C270	C315	γ	Φ zone	Φ total	%lum,lamp
10	2101	1932	1915	2146	2411	2525	2535	2380	0- 10	263.9	263.9	28.1,28.1
20	690.8	641.5	639.7	715.4	802.8	848.1	856.9	798.3	10- 20	375.5	639.4	68.1,68.1
30	62.64	57.12	54.02	54.14	56.31	61.53	66.12	65.85	20- 30	181.8	821.2	87.4,87.4
40	30.26	29.68	29.72	30.82	31.97	32.15	31.90	31.26	30- 40	23.47	844.7	89.9,89.9
50	26.66	26.20	26.07	26.48	26.96	27.02	26.95	26.84	40- 50	22.24	866.9	92.3,92.3
60	19.53	18.60	18.21	18.71	19.38	19.58	19.64	19.63	50- 60	20.77	887.7	94.5,94.5
70	10.42	9.490	9.178	9.895	10.73	10.71	10.52	10.46	60- 70	14.25	901.9	96,96
80	3.751	2.908	2.726	3.659	4.674	4.668	4.376	4.100	70- 80	7.179	909.1	96.8,96.8
90	0.3296	0.1901	0.3469	1.026	1.697	1.821	1.649	1.130	80- 90	2.137	911.2	97,97
100	0.6357	0.5096	0.6661	1.323	1.968	2.070	1.889	1.393	90-100	1.255	912.5	97.1,97.1
110	1.258	1.184	1.337	1.900	2.442	2.506	2.329	1.900	100-110	1.649	914.2	97.3,97.3
120	2.245	2.191	2.363	2.947	3.499	3.535	3.324	2.885	110-120	2.310	916.5	97.6,97.6
130	3.824	3.866	4.042	4.474	4.858	4.843	4.646	4.302	120-130	3.185	919.6	97.9,97.9
140	6.498	6.588	6.694	6.864	6.963	6.763	6.530	6.469	130-140	4.182	923.8	98.4,98.4
150	9.943	9.880	9.887	10.05	10.14	9.735	9.363	9.502	140-150	5.106	928.9	98.9,98.9
160	13.15	12.97	12.91	13.11	13.21	12.64	12.16	12.43	150-160	5.227	934.2	99.5,99.5
170	14.08	13.88	13.83	14.12	14.32	13.76	13.24	13.45	160-170	3.818	938.0	99.9,99.9
180	13.90	13.48	13.34	13.69	14.02	13.64	13.24	13.41	170-180	1.307	939.3	100,100
DEG	LUMINOUS INTENSITY:cd									UNIT:lm		

C Range: 0 - 360DEG
C Interval: 30.0DEG
Test Speed: HIGH
Temperature:25.3DEG
Operators:DAMIN
Test Date:2022-05-28

γ Range: 0 - 180DEG
 γ Interval: 1.0DEG
Test System:EVERFINE GO-2000A_V1 SYSTEM V2.00.443
Humidity:65.0%
Test Distance:8.000m [K=0.7063]
Remarks:

LUMINANCE LIMITATION CURVES

Test:U:221.80V I:0.0690A P:14.400W PF:0.9460 Freq:50.00Hz		
Lamp Flux:939.288x1 lm		
Name: NS22-φ90MM-15W	Type: LED	
MFR.: Lumega Group	DIM.: φ90*130mm	
	SUR.: φ85mm	



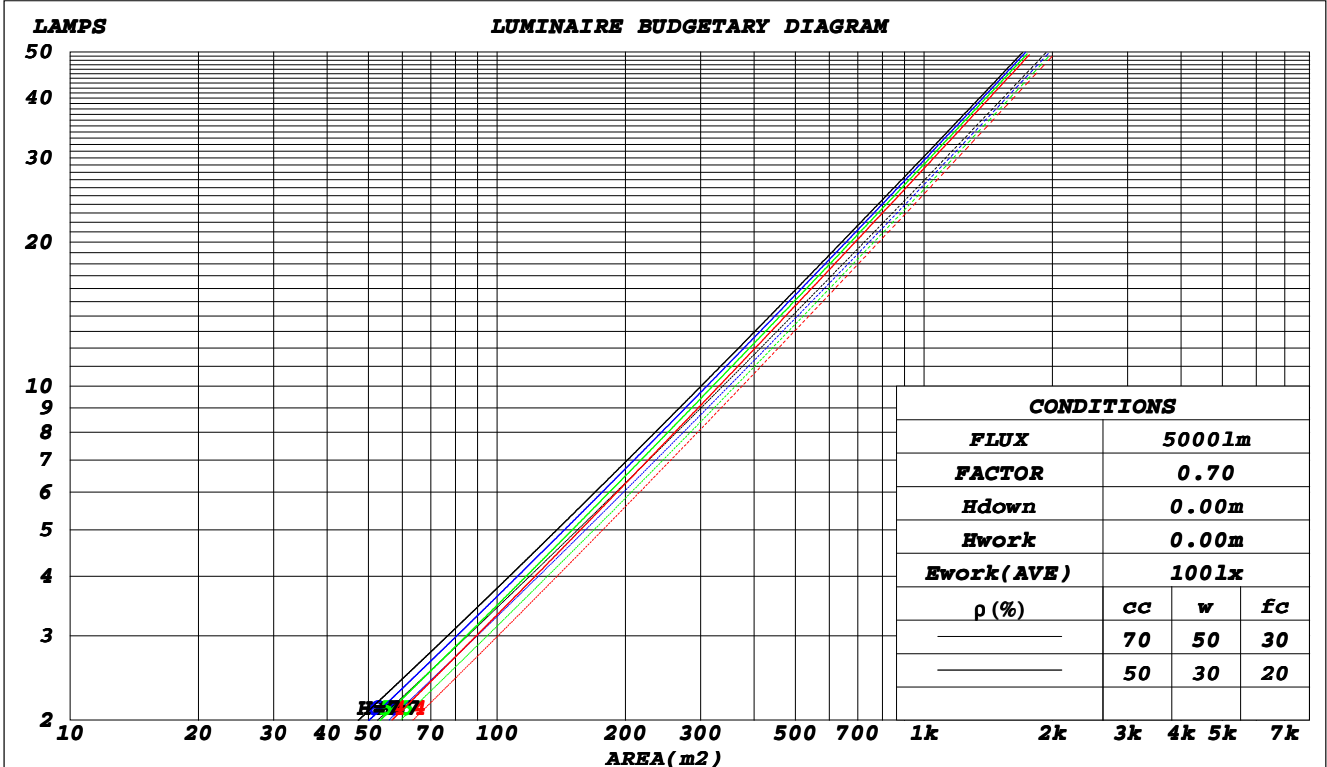
C Range: 0 - 360DEG
C Interval: 30.0DEG
Test Speed: HIGH
Temperature: 25.3DEG
Operators: DAMIN
Test Date: 2022-05-28

γ Range: 0 - 180DEG
γ Interval: 1.0DEG
Test System: EVERFINE GO-2000A_V1 SYSTEM V2.00.443
Humidity: 65.0%
Test Distance: 8.000m [K=0.7063]
Remarks:

CU AND LUMINAIRE BUDGETARY ESTIMATE DIAGRAM

Test:U:221.80V I:0.0690A P:14.400W PF:0.9460 Freq:50.00Hz Lamp Flux:939.288x1 lm		
Name: NS22-φ90MM-15W	Type: LED	
MFR.: Lumega Group	DIM.: φ90*130mm	
	SUR.: φ85mm	

ρ _{cc}	80%			70%			50%			30%			10%			0
ρ _w	50%	30%	10%	50%	30%	10%	50%	30%	10%	50%	30%	10%	50%	30%	10%	0
ρ _{fc}	20%			20%			20%			20%			20%			0
RCR	RCR:Room Cavity Ratio						Coefficients of Utilization(CU)									
0.0	1.18	1.18	1.18	1.15	1.15	1.15	1.09	1.09	1.09	1.04	1.04	1.04	.99	.99	.99	.97
1.0	1.11	1.09	1.07	1.09	1.07	1.05	1.04	1.02	1.01	.99	.99	.97	.96	.95	.94	.92
2.0	1.05	1.01	.98	1.03	.99	.97	.99	.96	.94	.96	.94	.92	.92	.91	.89	.88
3.0	.99	.95	.91	.98	.94	.91	.95	.91	.89	.92	.89	.87	.89	.87	.85	.84
4.0	.94	.90	.86	.93	.89	.86	.91	.87	.84	.88	.85	.83	.86	.84	.82	.80
5.0	.90	.85	.82	.89	.85	.81	.87	.83	.80	.85	.82	.79	.83	.81	.78	.77
6.0	.86	.82	.78	.86	.81	.78	.84	.80	.77	.82	.79	.76	.81	.78	.76	.74
7.0	.83	.78	.75	.82	.78	.75	.81	.77	.74	.80	.76	.73	.78	.75	.73	.72
8.0	.80	.75	.72	.79	.75	.72	.78	.74	.71	.77	.73	.71	.76	.73	.70	.69
9.0	.77	.73	.69	.77	.72	.69	.76	.72	.69	.75	.71	.69	.74	.71	.68	.67
10.0	.75	.70	.67	.74	.70	.67	.73	.69	.67	.72	.69	.66	.72	.68	.66	.65



C Range: 0 - 360DEG
 C Interval: 30.0DEG
 Test Speed: HIGH
 Temperature: 25.3DEG
 Operators: DAMIN
 Test Date: 2022-05-28

γ Range: 0 - 180DEG
 γ Interval: 1.0DEG
 Test System: EVERFINE GO-2000A_V1 SYSTEM V2.00.443
 Humidity: 65.0%
 Test Distance: 8.000m [K=0.7063]
 Remarks:

WEC AND CCEC

Test:U:221.80V I:0.0690A P:14.400W PF:0.9460 Freq:50.00Hz		
Lamp Flux:939.288x1 lm		
Name: NS22-φ90MM-15W	Type: LED	
MFR.: Lumega Group	DIM.: φ90*130mm	
	SUR.: φ85mm	

ρ _{cc}	80%			70%			50%			30%			10%			0
ρ _w	50%	30%	10%	50%	30%	10%	50%	30%	10%	50%	30%	10%	50%	30%	10%	0
ρ _{fc}	20%			20%			20%			20%			20%			0
RCR	RCR:Room Cavity Ratio						Wall Exitance Coefficients(WEC)									
0.0																
1.0	.161	.091	.029	.153	.087	.028	.139	.080	.025	.126	.073	.023	.114	.066	.021	
2.0	.149	.082	.025	.143	.079	.024	.131	.073	.023	.120	.067	.021	.110	.062	.020	
3.0	.139	.074	.022	.134	.072	.022	.123	.067	.020	.114	.062	.019	.105	.058	.018	
4.0	.130	.067	.020	.125	.066	.019	.116	.062	.018	.108	.058	.018	.101	.055	.017	
5.0	.122	.062	.018	.118	.060	.018	.110	.057	.017	.103	.054	.016	.096	.051	.015	
6.0	.115	.058	.016	.111	.056	.016	.105	.054	.016	.098	.051	.015	.092	.049	.014	
7.0	.109	.054	.015	.106	.053	.015	.100	.050	.015	.094	.048	.014	.089	.046	.014	
8.0	.103	.050	.014	.100	.049	.014	.095	.048	.014	.090	.046	.013	.085	.044	.013	
9.0	.098	.048	.013	.096	.047	.013	.091	.045	.013	.086	.043	.012	.082	.042	.012	
10.0	.094	.045	.012	.092	.044	.012	.087	.043	.012	.083	.041	.012	.079	.040	.011	

ρ _{cc}	80%			70%			50%			30%			10%			0
ρ _w	50%	30%	10%	50%	30%	10%	50%	30%	10%	50%	30%	10%	50%	30%	10%	0
ρ _{fc}	20%			20%			20%			20%			20%			0
RCR	RCR:Room Cavity Ratio						Ceiling Cavity Exitance Coefficients(CCEC)									
0.0	.213	.213	.213	.182	.182	.182	.124	.124	.124	.071	.071	.071	.023	.023	.023	
1.0	.193	.180	.169	.165	.155	.146	.113	.107	.101	.065	.062	.059	.021	.020	.019	
2.0	.176	.156	.138	.151	.134	.120	.103	.093	.083	.060	.054	.049	.019	.017	.016	
3.0	.162	.137	.116	.139	.118	.101	.096	.082	.071	.055	.048	.042	.018	.016	.014	
4.0	.151	.122	.099	.129	.105	.086	.089	.073	.061	.051	.043	.036	.017	.014	.012	
5.0	.141	.110	.087	.121	.095	.075	.083	.066	.053	.048	.039	.032	.016	.013	.010	
6.0	.132	.100	.077	.114	.087	.067	.078	.061	.047	.046	.036	.028	.015	.012	.009	
7.0	.125	.092	.069	.107	.080	.060	.074	.056	.043	.043	.033	.025	.014	.011	.008	
8.0	.119	.085	.063	.102	.074	.055	.071	.052	.039	.041	.031	.023	.013	.010	.008	
9.0	.113	.080	.058	.097	.069	.050	.067	.049	.036	.039	.029	.021	.013	.009	.007	
10.0	.108	.075	.054	.093	.065	.047	.065	.046	.033	.038	.027	.020	.012	.009	.007	

C Range: 0 - 360DEG
C Interval: 30.0DEG
Test Speed: HIGH
Temperature:25.3DEG
Operators:DAMIN
Test Date:2022-05-28

γ Range: 0 - 180DEG
γ Interval: 1.0DEG
Test System:EVERFINE GO-2000A_V1 SYSTEM V2.00.443
Humidity:65.0%
Test Distance:8.000m [K=0.7063]
Remarks:

UGR(Unified Glare Rating) Table

Test:U:221.80V I:0.0690A P:14.400W PF:0.9460 Freq:50.00Hz		
Lamp Flux:939.288x1 lm		
Name: NS22-φ90MM-15W	Type: LED	
MFR.: Lumega Group	DIM.: φ90*130mm	
	SUR.: φ85mm	

ceiling/cavity	0.7	0.7	0.5	0.5	0.3	0.7	0.7	0.5	0.5	0.3
walls	0.5	0.3	0.5	0.3	0.3	0.5	0.3	0.5	0.3	0.3
working plane	0.2	0.2	0.2	0.2	0.2	0.2	0.2	0.2	0.2	0.2
Room dimensions	Viewed crosswise					Viewed endwise				
x = 2H y = 2H	12.5	13.2	12.7	13.4	13.6	12.3	13.0	12.5	13.2	13.4
3H	13.7	14.4	14.0	14.6	14.9	13.4	14.1	13.7	14.3	14.5
4H	14.1	14.8	14.5	15.1	15.3	13.7	14.4	14.0	14.6	14.9
6H	14.4	15.0	14.7	15.3	15.6	13.9	14.5	14.2	14.8	15.1
8H	14.5	15.1	14.8	15.4	15.7	13.9	14.5	14.2	14.8	15.1
12H	14.5	15.1	14.8	15.4	15.7	13.9	14.5	14.2	14.8	15.1
4H 2H	13.0	13.7	13.3	13.9	14.2	12.8	13.5	13.2	13.8	14.0
3H	14.4	14.9	14.7	15.3	15.6	14.1	14.7	14.4	15.0	15.3
4H	14.9	15.4	15.3	15.7	16.1	14.5	15.0	14.9	15.4	15.7
6H	15.2	15.7	15.6	16.1	16.5	14.7	15.2	15.1	15.6	16.0
8H	15.3	15.7	15.7	16.1	16.6	14.7	15.2	15.2	15.6	16.0
12H	15.3	15.7	15.8	16.1	16.6	14.7	15.1	15.2	15.5	16.0
8H 4H	15.0	15.4	15.4	15.8	16.2	14.6	15.1	15.1	15.5	15.9
6H	15.4	15.7	15.8	16.2	16.6	14.9	15.3	15.4	15.7	16.2
8H	15.5	15.8	16.0	16.3	16.8	14.9	15.3	15.4	15.7	16.2
12H	15.5	15.8	16.1	16.3	16.8	14.9	15.2	15.4	15.7	16.2
12H 4H	14.9	15.3	15.4	15.8	16.2	14.6	15.0	15.0	15.4	15.9
6H	15.3	15.7	15.8	16.1	16.6	14.9	15.2	15.4	15.7	16.2
8H	15.5	15.7	16.0	16.2	16.8	14.9	15.2	15.5	15.7	16.2
Variations with the observer position at spacings(CIE Pub.117):										
S = 1.0H	+ 0.1 / - 0.2					+ 0.2 / - 0.2				
1.5H	+ 0.3 / - 0.4					+ 0.4 / - 0.5				
2.0H	+ 0.3 / - 0.4					+ 0.4 / - 0.5				

CIE Pub.117, 939.3 lm Total Lamp Luminous Flux Corrected (8log(F/F0) = -0.2)
 Area: 0.006 m2

C Range: 0 - 360DEG
C Interval: 30.0DEG
Test Speed: HIGH
Temperature:25.3DEG
Operators:DAMIN
Test Date:2022-05-28

γ Range: 0 - 180DEG
γ Interval: 1.0DEG
Test System:EVERFINE GO-2000A_V1 SYSTEM V2.00.443
Humidity:65.0%
Test Distance:8.000m [K=0.7063]
Remarks:

UTILIZATION FACTORS TABLE

Test:U:221.80V I:0.0690A P:14.400W PF:0.9460 Freq:50.00Hz Lamp Flux:939.288x1 lm		
Name: NS22-φ90MM-15W	Type: LED	
MFR.: Lumega Group	DIM.: φ90*130mm	
	SUR.: φ85mm	

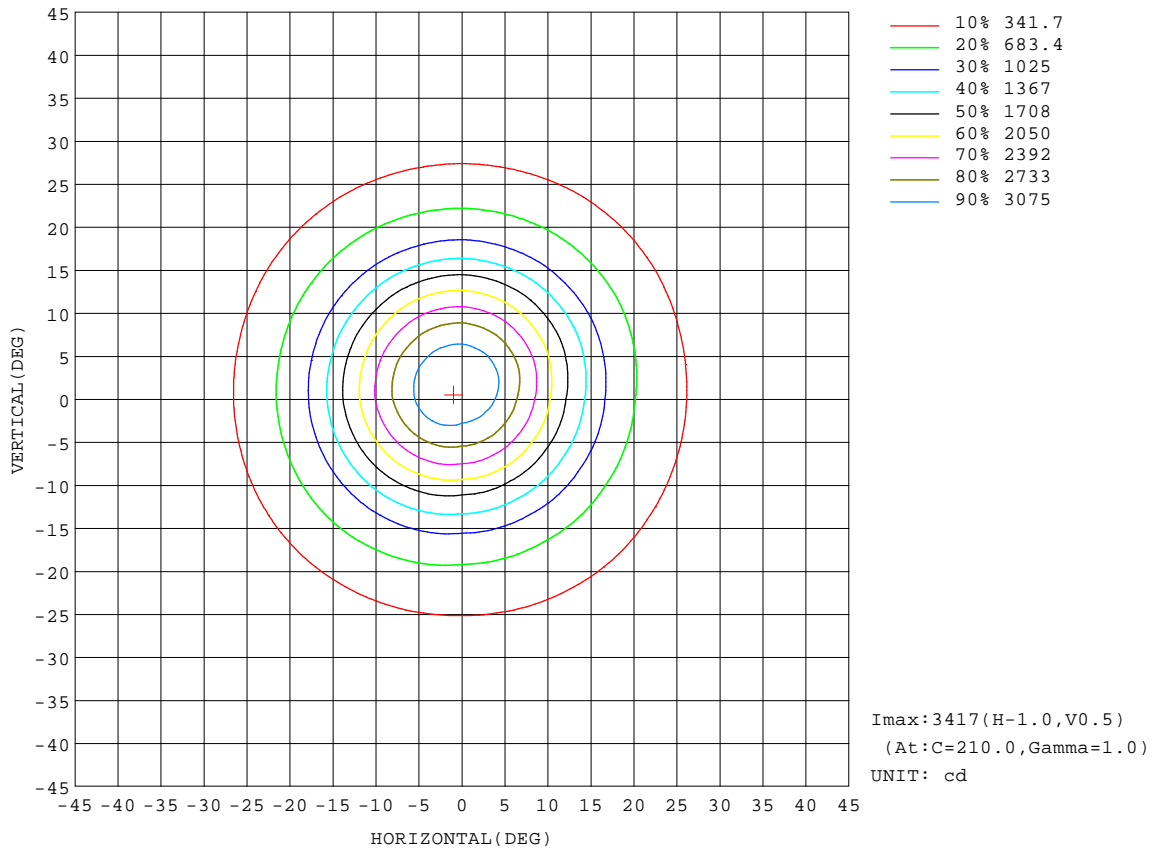
REFLECTANCE										
Ceiling	0.8	0.8	0.8	0.7	0.7	0.7	0.5	0.5	0.5	0
Walls	0.7	0.5	0.3	0.7	0.5	0.3	0.7	0.5	0.3	0
Working plane	0.2	0.2	0.2	0.2	0.2	0.2	0.2	0.2	0.2	0
ROOM INDEX	UTILIZATION FACTORS(PERCENT) $k(RI) \times RCR = 5$									
k = 0.60	85	79	75	85	79	75	84	78	75	71
0.80	93	87	83	92	86	83	90	85	82	78
1.00	97	91	87	96	91	87	94	90	86	82
1.25	101	96	92	100	95	91	98	93	90	86
1.50	104	99	95	102	98	95	100	96	93	88
2.00	107	102	99	105	101	98	102	99	96	90
2.50	109	105	101	107	103	100	103	100	98	91
3.00	110	107	104	108	105	102	104	102	100	93
4.00	113	110	107	110	108	106	106	104	102	94
5.00	114	111	109	111	109	108	107	105	104	95
ROOM INDEX	UF(total)									Direct
According to DIN EN 13032-2 2004			Suspended					SHRNOM = 1.25		

C Range: 0 - 360DEG
C Interval: 30.0DEG
Test Speed: HIGH
Temperature:25.3DEG
Operators:DAMIN
Test Date:2022-05-28

γ Range: 0 - 180DEG
γ Interval: 1.0DEG
Test System:EVERFINE GO-2000A_V1 SYSTEM V2.00.443
Humidity:65.0%
Test Distance:8.000m [K=0.7063]
Remarks:

ISOCANDELA DIAGRAM

Test:U:221.80V I:0.0690A P:14.400W PF:0.9460 Freq:50.00Hz		
Lamp Flux:939.288x1 lm		
Name: NS22-φ90MM-15W	Type: LED	
MFR.: Lumega Group	DIM.: φ90*130mm	
	SUR.: φ85mm	



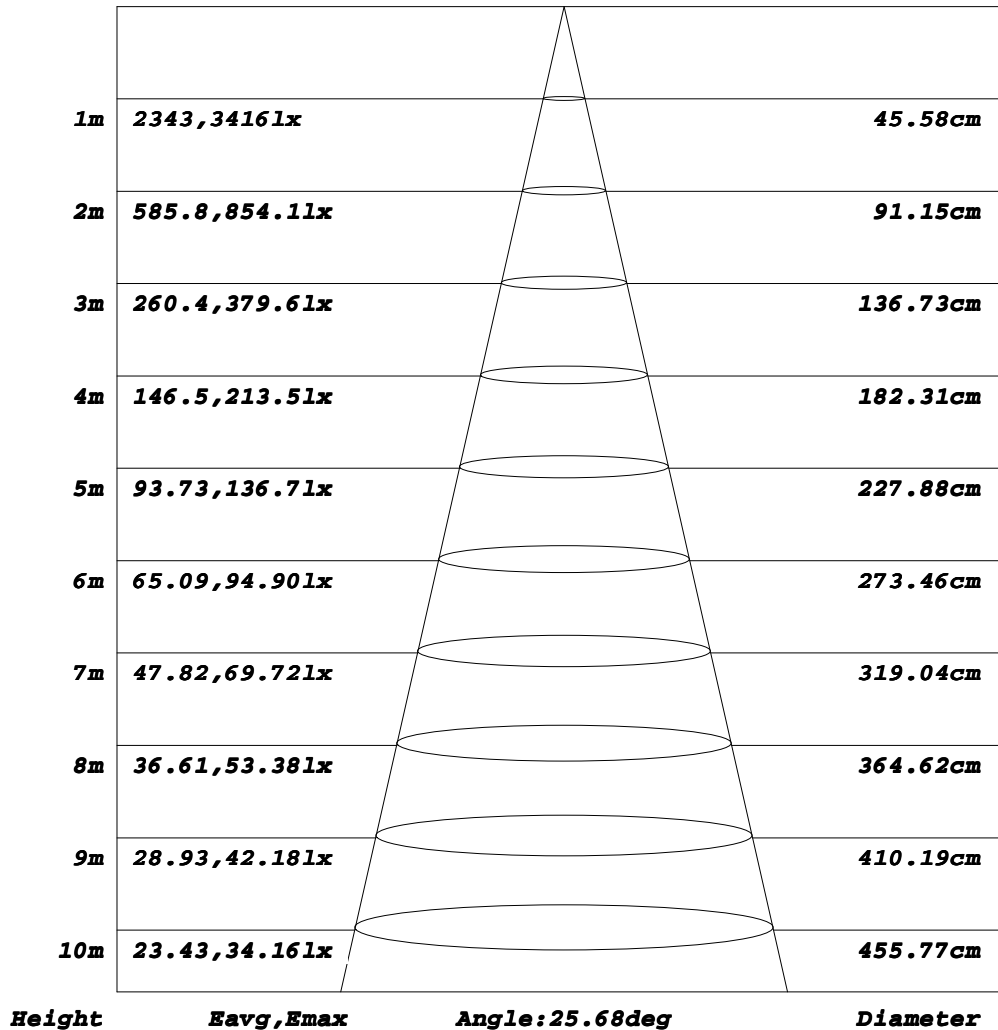
C Range: 0 - 360DEG
C Interval: 30.0DEG
Test Speed: HIGH
Temperature: 25.3DEG
Operators: DAMIN
Test Date: 2022-05-28

γ Range: 0 - 180DEG
γ Interval: 1.0DEG
Test System: EVERFINE GO-2000A_V1 SYSTEM V2.00.443
Humidity: 65.0%
Test Distance: 8.000m [K=0.7063]
Remarks:

AAI Figure

Test:U:221.80V I:0.0690A P:14.400W PF:0.9460 Freq:50.00Hz		
Lamp Flux:939.288x1 lm		
Name: NS22-φ90MM-15W	Type: LED	
MFR.: Lumega Group	DIM.: φ90*130mm	
	SUR.: φ85mm	

Flux out:392.4 lm



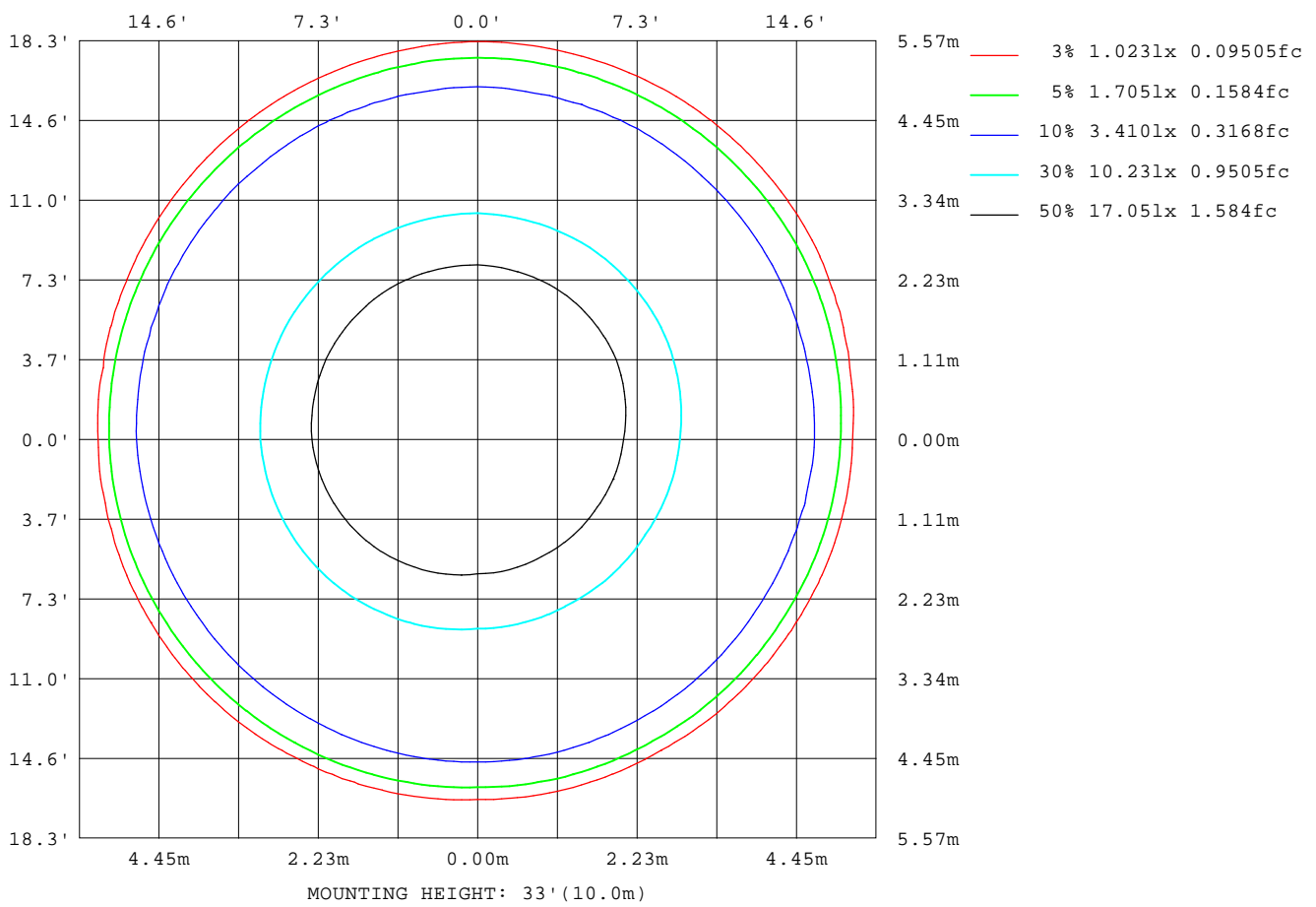
Note: The Curves indicate the illuminated area and the average illumination when the luminaire is at different distance.

C Range: 0 - 360DEG
C Interval: 30.0DEG
Test Speed: HIGH
Temperature: 25.3DEG
Operators: DAMIN
Test Date: 2022-05-28

γ Range: 0 - 180DEG
γ Interval: 1.0DEG
Test System: EVERFINE GO-2000A_V1 SYSTEM V2.00.443
Humidity: 65.0%
Test Distance: 8.000m [K=0.7063]
Remarks:

ISOLUX DIAGRAM

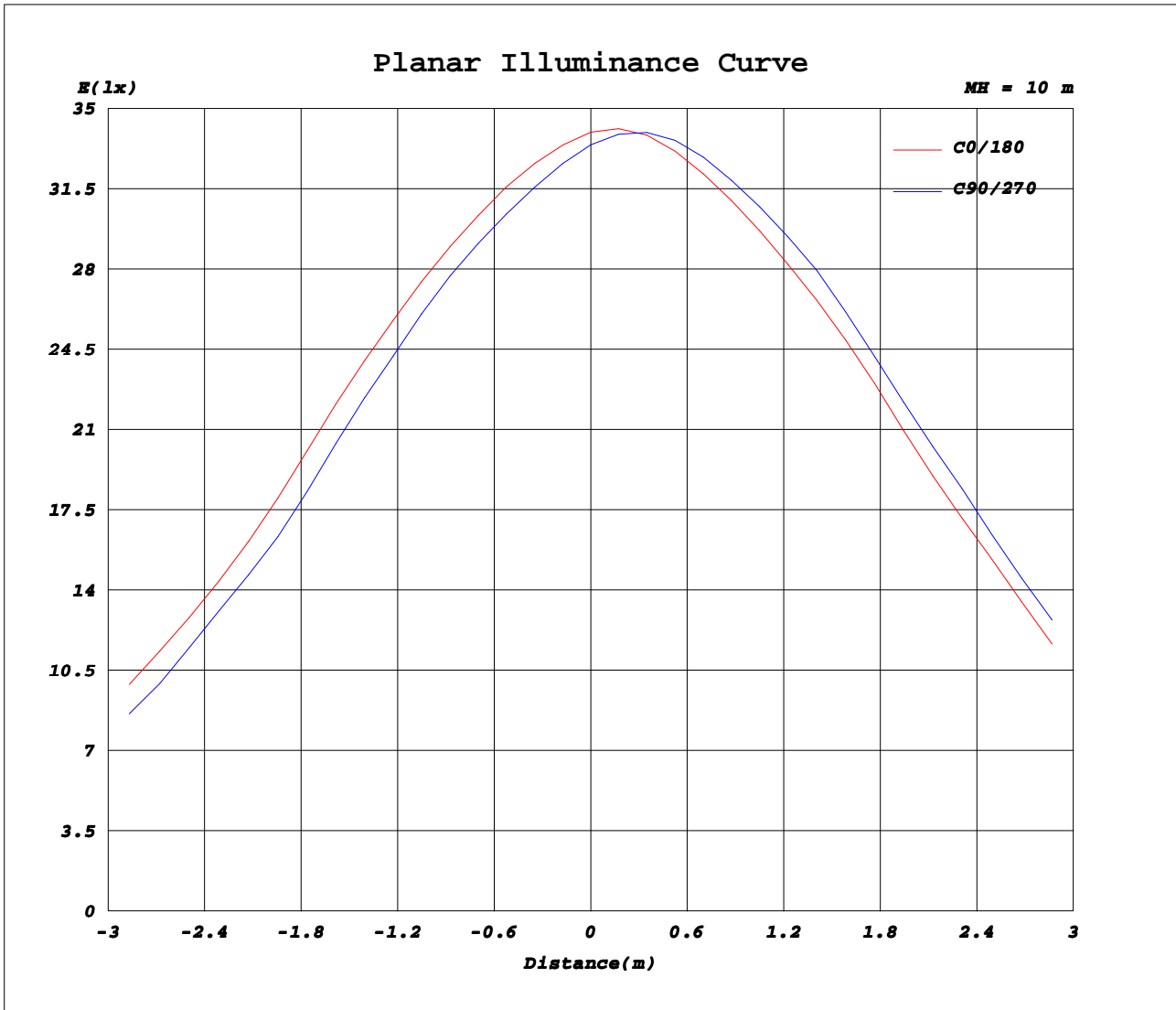
Test:U:221.80V I:0.0690A P:14.400W PF:0.9460 Freq:50.00Hz		
Lamp Flux:939.288x1 lm		
Name: NS22-φ90MM-15W	Type: LED	
MFR.: Lumega Group	DIM.: φ90*130mm	
	SUR.: φ85mm	



C Range: 0 - 360DEG
C Interval: 30.0DEG
Test Speed: HIGH
Temperature: 25.3DEG
Operators: DAMIN
Test Date: 2022-05-28

γ Range: 0 - 180DEG
γ Interval: 1.0DEG
Test System: EVERFINE GO-2000A_V1 SYSTEM V2.00.443
Humidity: 65.0%
Test Distance: 8.000m [K=0.7063]
Remarks:

Planar Illuminance Curve



C Range: 0 - 360DEG
C Interval: 30.0DEG
Test Speed: HIGH
Temperature: 25.3DEG
Operators: DAMIN
Test Date: 2022-05-28

γ Range: 0 - 180DEG
γ Interval: 1.0DEG
Test System: EVERFINE GO-2000A_V1 SYSTEM V2.00.443
Humidity: 65.0%
Test Distance: 8.000m [K=0.7063]
Remarks:

LUMINOUS DISTRIBUTION INTENSITY DATA

Test:U:221.80V I:0.0690A P:14.400W PF:0.9460 Freq:50.00Hz		
Lamp Flux:939.288x1 lm		
Name: NS22-φ90MM-15W	Type: LED	
MFR.: Lumega Group	DIM.: φ90*130mm	
	SUR.: φ85mm	

Table--1

UNIT: cd

C (DEG) \ γ (DEG)	0	30	60	90	120	150	180	210	240	270	300	330							
0	3397	3367	3348	3342	3359	3380	3397	3380	3359	3342	3348	3367							
5	2931	2837	2794	2803	2897	3017	3136	3199	3230	3224	3169	3071							
10	2101	1963	1901	1915	2056	2235	2411	2503	2546	2535	2452	2307							
15	1259	1145	1092	1101	1213	1355	1497	1576	1616	1612	1546	1429							
20	691	650	633	640	686	745	803	838	858	857	826	771							
25	485	417	377	365	400	449	500	521	531	532	525	510							
30	62.6	58.6	55.7	54.0	53.7	54.5	56.3	59.8	63.3	66.1	66.4	65.3							
35	34.1	33.2	32.7	32.8	33.6	34.7	35.9	36.6	36.9	37.0	36.5	35.5							
40	30.3	29.8	29.6	29.7	30.4	31.2	32.0	32.2	32.1	31.9	31.5	31.0							
45	28.4	28.1	28.0	28.0	28.4	28.9	29.4	29.4	29.4	29.2	29.0	28.8							
50	26.7	26.3	26.1	26.1	26.3	26.6	27.0	27.0	27.0	27.0	26.9	26.8							
55	23.6	23.1	22.9	22.8	22.9	23.1	23.4	23.5	23.7	23.7	23.7	23.7							
60	19.5	18.8	18.4	18.2	18.5	18.9	19.4	19.5	19.6	19.6	19.6	19.6							
65	14.7	13.9	13.5	13.4	13.7	14.2	14.7	14.8	14.7	14.7	14.7	14.7							
70	10.4	9.70	9.28	9.18	9.61	10.2	10.7	10.8	10.7	10.5	10.5	10.4							
75	6.81	6.09	5.69	5.63	6.14	6.80	7.42	7.45	7.33	7.13	7.03	6.92							
80	3.75	3.08	2.74	2.73	3.30	4.02	4.67	4.73	4.61	4.38	4.20	4.00							
85	1.30	0.85	0.65	0.71	1.23	1.86	2.45	2.62	2.62	2.47	2.21	1.82							
90	0.33	0.19	0.19	0.35	0.78	1.27	1.70	1.83	1.81	1.65	1.35	0.91							
95	0.45	0.31	0.32	0.47	0.90	1.38	1.80	1.92	1.90	1.74	1.45	1.02							
100	0.64	0.50	0.51	0.67	1.09	1.56	1.97	2.08	2.06	1.89	1.60	1.18							
105	0.89	0.78	0.79	0.94	1.35	1.79	2.18	2.29	2.25	2.09	1.81	1.41							
110	1.26	1.17	1.20	1.34	1.70	2.10	2.44	2.53	2.49	2.33	2.08	1.72							
115	1.72	1.64	1.67	1.81	2.17	2.57	2.91	2.98	2.92	2.75	2.51	2.16							
120	2.25	2.17	2.21	2.36	2.74	3.15	3.50	3.57	3.50	3.32	3.07	2.71							
125	2.91	2.87	2.93	3.09	3.44	3.81	4.12	4.18	4.11	3.94	3.69	3.34							
130	3.82	3.83	3.90	4.04	4.33	4.62	4.86	4.88	4.80	4.65	4.44	4.17							
135	5.01	5.08	5.17	5.28	5.46	5.62	5.74	5.71	5.62	5.48	5.35	5.19							
140	6.50	6.55	6.62	6.69	6.81	6.91	6.96	6.84	6.68	6.53	6.47	6.46							
145	8.16	8.18	8.21	8.26	8.36	8.44	8.46	8.26	8.04	7.85	7.85	7.95							
150	9.94	9.89	9.87	9.89	10.0	10.1	10.1	9.88	9.59	9.36	9.40	9.60							
155	11.7	11.6	11.6	11.6	11.7	11.8	11.8	11.5	11.1	10.9	10.9	11.2							
160	13.1	13.0	12.9	12.9	13.0	13.2	13.2	12.8	12.4	12.2	12.3	12.6							
165	13.9	13.8	13.7	13.7	13.8	14.0	14.1	13.7	13.3	13.0	13.1	13.4							
170	14.1	13.9	13.8	13.8	14.0	14.2	14.3	14.0	13.6	13.2	13.3	13.6							
175	13.9	13.7	13.6	13.6	13.7	13.9	14.0	13.7	13.4	13.1	13.2	13.4							
180	13.9	13.6	13.4	13.3	13.6	13.8	14.0	13.8	13.5	13.2	13.3	13.5							

C Range: 0 - 360DEG
C Interval: 30.0DEG
Test Speed: HIGH
Temperature: 25.3DEG
Operators: DAMIN
Test Date: 2022-05-28

γ Range: 0 - 180DEG
γ Interval: 1.0DEG
Test System: EVERFINE GO-2000A_V1 SYSTEM V2.00.443
Humidity: 65.0%
Test Distance: 8.000m [K=0.7063]
Remarks: