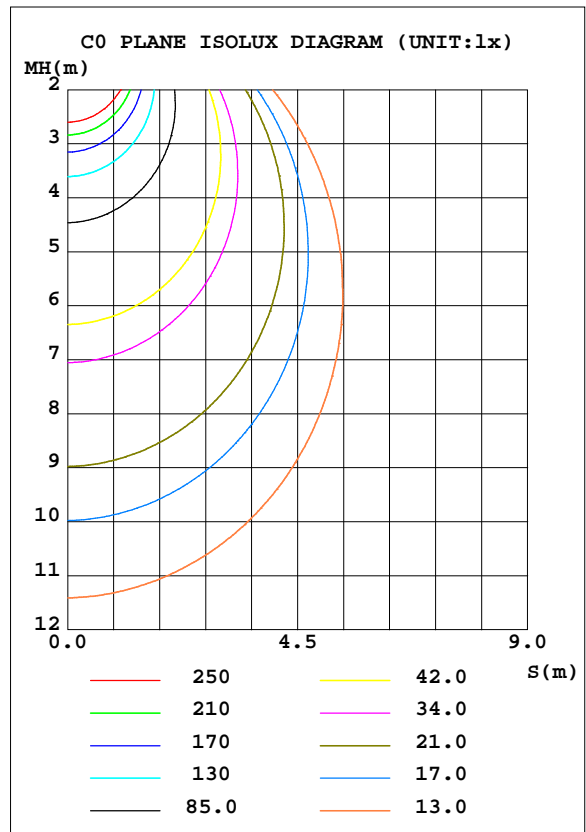
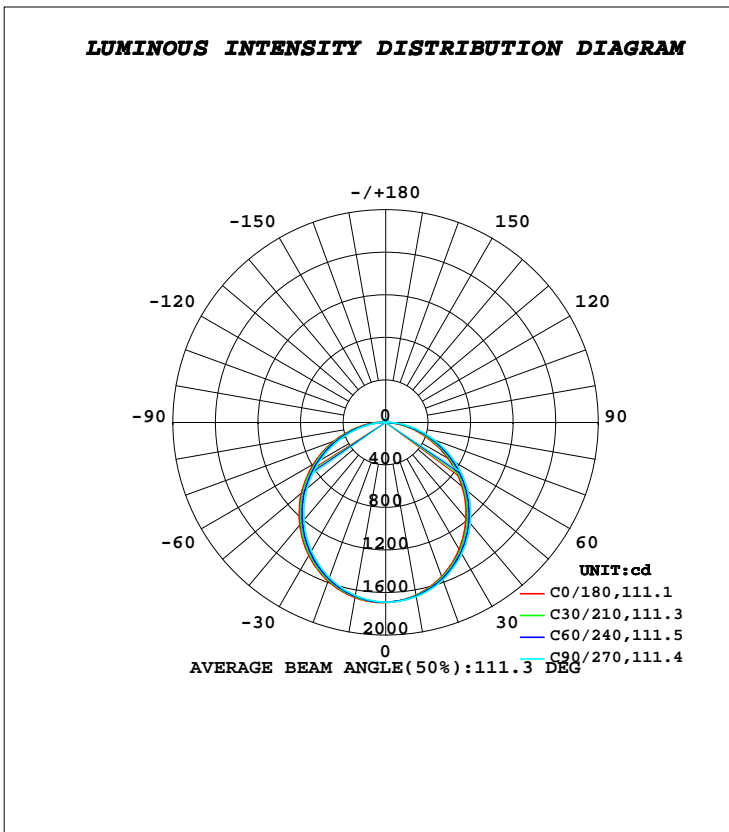


LUMINAIRE PHOTOMETRIC TEST REPORT

| | | |
|---|-------------------|--|
| Test:U:221.70V I:0.1840A P:39.800W PF:0.9750 Freq:50.00Hz | | |
| Lamp Flux:4933.34x1 lm | | |
| Name: NS40-φ435MM-40W | Type: LED | |
| MFR.: Lumega Group | DIM.: D435*H100mm | |
| | SUR.: D415mm | |

| DATA OF LAMP | | PHOTOMETRIC DATA Eff: 123.95 lm/W | | | |
|------------------|---------|-----------------------------------|--------|--------------------|----------|
| MODEL | | I _{max} (cd) | 1694 | S/MH(C0/180) | 1.22 |
| NOMINAL POWER(W) | 40 | LOR(%) | 100.0 | S/MH(C90/270) | 1.26 |
| RATED VOLTAGE(V) | 220 | TOTAL FLUX(lm) | 4933.3 | η UP, DN(C0-180) | 1.1,49.0 |
| NOMINAL FLUX(lm) | 4933.34 | CIE CLASS | DIRECT | η UP, DN(C180-360) | 1.2,48.6 |
| LAMPS INSIDE | 1 | η up(%) | 2.3 | CIBSE SHR NOM | 1.25 |
| TEST VOLTAGE(V) | 221.6 | η down(%) | 97.7 | CIBSE SHR MAX | 1.35 |



C Range: 0 - 360DEG
C Interval: 30.0DEG
Test Speed: HIGH
Temperature:25.3DEG
Operators:DAMIN
Test Date:2022-05-14

γ Range: 0 - 180DEG
γ Interval: 1.0DEG
Test System:EVERFINE GO-2000A_V1 SYSTEM V2.00.443
Humidity:65.0%
Test Distance:8.000m [K=0.7063]
Remarks:

ZONAL FLUX DIAGRAM

ZONAL FLUX DIAGRAM:

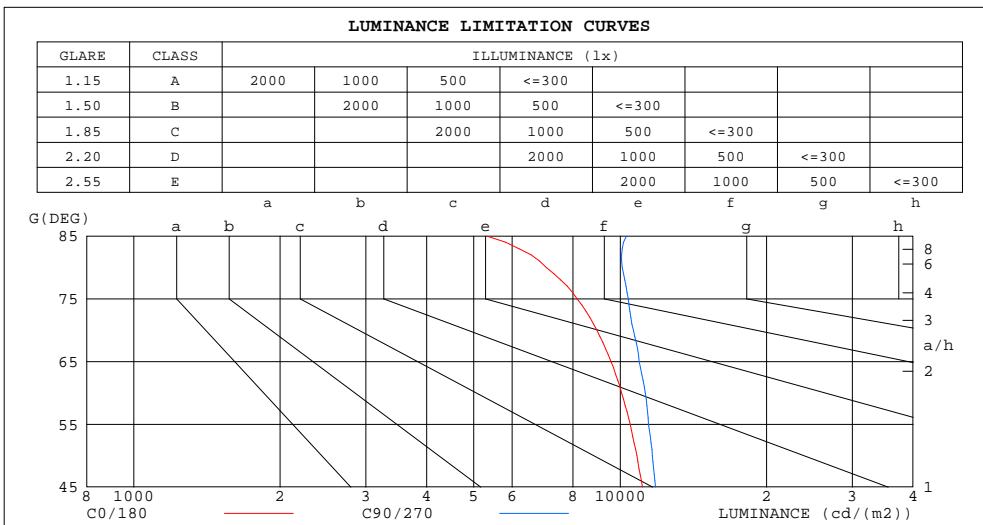
| γ | C0 | C45 | C90 | C135 | C180 | C225 | C270 | C315 | γ | Φ zone | Φ total | %lum, lamp |
|----------|-----------------------|-------|-------|-------|-------|-------|-------|-------|----------|-------------|--------------|------------|
| 10 | 1648 | 1655 | 1663 | 1666 | 1672 | 1661 | 1650 | 1646 | 0- 10 | 159.8 | 159.8 | 3.24,3.24 |
| 20 | 1542 | 1558 | 1574 | 1579 | 1587 | 1570 | 1551 | 1542 | 10- 20 | 456.3 | 616.1 | 12.5,12.5 |
| 30 | 1381 | 1405 | 1430 | 1436 | 1445 | 1423 | 1396 | 1384 | 20- 30 | 688.3 | 1304 | 26.4,26.4 |
| 40 | 1176 | 1208 | 1239 | 1246 | 1258 | 1229 | 1195 | 1180 | 30- 40 | 825.2 | 2129 | 43.2,43.2 |
| 50 | 939.9 | 975.8 | 1011 | 1020 | 1036 | 1002 | 962.5 | 946.6 | 40- 50 | 851.9 | 2981 | 60.4,60.4 |
| 60 | 679.7 | 719.5 | 760.5 | 768.2 | 782.0 | 747.9 | 706.4 | 686.8 | 50- 60 | 769.1 | 3751 | 76,76 |
| 70 | 413.5 | 453.3 | 491.8 | 502.6 | 517.9 | 485.2 | 444.3 | 421.5 | 60- 70 | 592.6 | 4343 | 88,88 |
| 80 | 165.3 | 201.3 | 236.6 | 247.2 | 262.3 | 232.7 | 194.5 | 175.8 | 70- 80 | 356.9 | 4700 | 95.3,95.3 |
| 90 | 8.753 | 10.21 | 21.90 | 35.22 | 48.49 | 28.88 | 11.26 | 11.28 | 80- 90 | 118.4 | 4818 | 97.7,97.7 |
| 100 | 11.49 | 10.70 | 10.28 | 10.26 | 13.03 | 13.31 | 13.64 | 13.77 | 90-100 | 13.24 | 4832 | 97.9,97.9 |
| 110 | 14.37 | 13.61 | 13.21 | 12.99 | 15.76 | 16.00 | 16.37 | 16.47 | 100-110 | 14.19 | 4846 | 98.2,98.2 |
| 120 | 17.18 | 16.43 | 16.05 | 15.82 | 18.44 | 18.64 | 19.03 | 19.14 | 110-120 | 16.06 | 4862 | 98.6,98.6 |
| 130 | 19.85 | 19.21 | 18.84 | 18.63 | 21.01 | 21.20 | 21.48 | 21.67 | 120-130 | 16.94 | 4879 | 98.9,98.9 |
| 140 | 22.36 | 21.74 | 21.46 | 21.25 | 23.42 | 23.57 | 23.75 | 23.93 | 130-140 | 16.60 | 4895 | 99.2,99.2 |
| 150 | 24.86 | 24.26 | 24.07 | 23.84 | 25.58 | 25.67 | 25.77 | 25.91 | 140-150 | 14.93 | 4910 | 99.5,99.5 |
| 160 | 27.47 | 26.89 | 26.86 | 26.64 | 27.79 | 27.71 | 27.86 | 27.85 | 150-160 | 12.07 | 4922 | 99.8,99.8 |
| 170 | 29.64 | 29.18 | 29.32 | 28.99 | 29.62 | 29.45 | 29.64 | 29.49 | 160-170 | 8.032 | 4931 | 99.9,99.9 |
| 180 | 30.38 | 30.11 | 30.31 | 30.02 | 30.42 | 30.10 | 30.31 | 30.02 | 170-180 | 2.839 | 4933 | 100,100 |
| DEG | LUMINOUS INTENSITY:cd | | | | | | | | | UNIT:lm | | |

C Range: 0 - 360DEG
C Interval: 30.0DEG
Test Speed: HIGH
Temperature:25.3DEG
Operators:DAMIN
Test Date:2022-05-14

γ Range: 0 - 180DEG
 γ Interval: 1.0DEG
Test System:EVERFINE GO-2000A_V1 SYSTEM V2.00.443
Humidity:65.0%
Test Distance:8.000m [K=0.7063]
Remarks:

LUMINANCE LIMITATION CURVES

| | | |
|---|-------------------|--|
| Test:U:221.70V I:0.1840A P:39.800W PF:0.9750 Freq:50.00Hz | | |
| Lamp Flux:4933.34x1 lm | | |
| Name: NS40-φ435MM-40W | Type: LED | |
| MFR.: Lumega Group | DIM.: D435*H100mm | |
| | SUR.: D415mm | |



| LUMINANCE cd/(m2) | | |
|-------------------|--------|---------|
| G(DEG) | C0/180 | C90/270 |
| 85 | 5326 | 10296 |
| 80 | 7050 | 10095 |
| 75 | 8153 | 10388 |
| 70 | 8955 | 10650 |
| 65 | 9579 | 10943 |
| 60 | 10070 | 11267 |
| 55 | 10482 | 11437 |
| 50 | 10831 | 11648 |
| 45 | 11107 | 11817 |

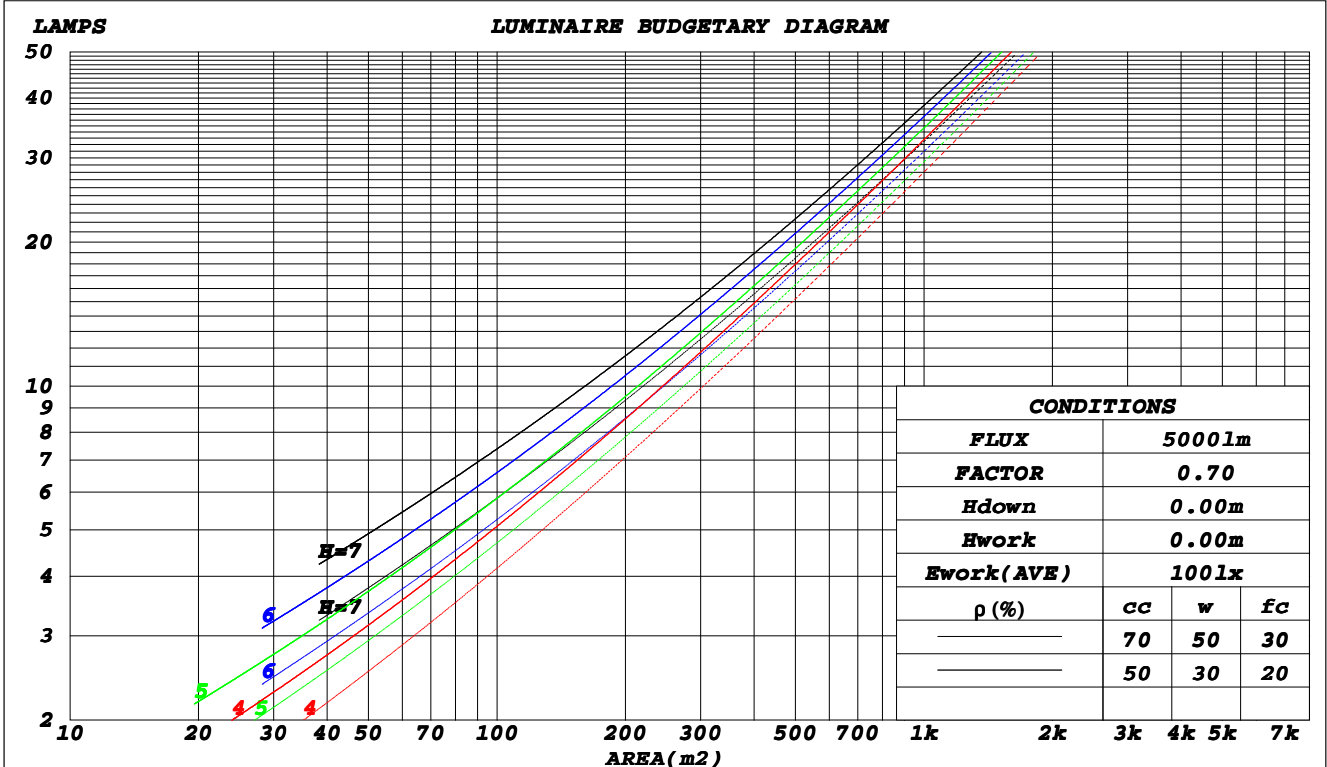
C Range: 0 - 360DEG
C Interval: 30.0DEG
Test Speed: HIGH
Temperature: 25.3DEG
Operators: DAMIN
Test Date: 2022-05-14

γ Range: 0 - 180DEG
γ Interval: 1.0DEG
Test System: EVERFINE GO-2000A_V1 SYSTEM V2.00.443
Humidity: 65.0%
Test Distance: 8.000m [K=0.7063]
Remarks:

CU AND LUMINAIRE BUDGETARY ESTIMATE DIAGRAM

| | | |
|---|-------------------|--|
| Test:U:221.70V I:0.1840A P:39.800W PF:0.9750 Freq:50.00Hz | | |
| Lamp Flux:4933.34x1 lm | | |
| Name: NS40-φ435MM-40W | Type: LED | |
| MFR.: Lumega Group | DIM.: D435*H100mm | |
| | SUR.: D415mm | |

| ρ _{cc} | 80% | | | 70% | | | 50% | | | 30% | | | 10% | | | 0 |
|-----------------|------------------------------|------|------|------|------|------|--|------|------|------|------|------|-----|-----|-----|-----|
| ρ _w | 50% | 30% | 10% | 50% | 30% | 10% | 50% | 30% | 10% | 50% | 30% | 10% | 50% | 30% | 10% | 0 |
| ρ _{fc} | 20% | | | 20% | | | 20% | | | 20% | | | 20% | | | 0 |
| RCR | RCR:Room Cavity Ratio | | | | | | Coefficients of Utilization(CU) | | | | | | | | | |
| 0.0 | 1.18 | 1.18 | 1.18 | 1.15 | 1.15 | 1.15 | 1.10 | 1.10 | 1.10 | 1.05 | 1.05 | 1.05 | .00 | .00 | .00 | .98 |
| 1.0 | 1.03 | .99 | .95 | 1.00 | .96 | .93 | .96 | .93 | .90 | .91 | .89 | .86 | .87 | .85 | .83 | .81 |
| 2.0 | .90 | .83 | .77 | .87 | .81 | .76 | .84 | .78 | .74 | .80 | .75 | .72 | .77 | .73 | .70 | .67 |
| 3.0 | .79 | .70 | .64 | .77 | .69 | .63 | .73 | .67 | .62 | .70 | .65 | .60 | .68 | .63 | .59 | .57 |
| 4.0 | .70 | .61 | .54 | .68 | .60 | .53 | .65 | .58 | .52 | .63 | .56 | .51 | .60 | .55 | .50 | .48 |
| 5.0 | .62 | .53 | .46 | .61 | .52 | .46 | .58 | .51 | .45 | .56 | .50 | .45 | .54 | .48 | .44 | .42 |
| 6.0 | .56 | .47 | .40 | .55 | .46 | .40 | .53 | .45 | .40 | .51 | .44 | .39 | .49 | .43 | .39 | .36 |
| 7.0 | .51 | .42 | .36 | .50 | .41 | .35 | .48 | .40 | .35 | .46 | .40 | .35 | .45 | .39 | .34 | .32 |
| 8.0 | .46 | .38 | .32 | .45 | .37 | .32 | .44 | .37 | .31 | .42 | .36 | .31 | .41 | .35 | .31 | .29 |
| 9.0 | .42 | .34 | .29 | .42 | .34 | .28 | .40 | .33 | .28 | .39 | .33 | .28 | .38 | .32 | .28 | .26 |
| 10.0 | .39 | .31 | .26 | .38 | .31 | .26 | .37 | .30 | .26 | .36 | .30 | .25 | .35 | .29 | .25 | .23 |



C Range: 0 - 360DEG
 C Interval: 30.0DEG
 Test Speed: HIGH
 Temperature: 25.3DEG
 Operators: DAMIN
 Test Date: 2022-05-14

γ Range: 0 - 180DEG
 γ Interval: 1.0DEG
 Test System: EVERFINE GO-2000A_V1 SYSTEM V2.00.443
 Humidity: 65.0%
 Test Distance: 8.000m [K=0.7063]
 Remarks:

WEC AND CCEC

| | | |
|---|-------------------|--|
| Test:U:221.70V I:0.1840A P:39.800W PF:0.9750 Freq:50.00Hz | | |
| Lamp Flux:4933.34x1 lm | | |
| Name: NS40-φ435MM-40W | Type: LED | |
| MFR.: Lumega Group | DIM.: D435*H100mm | |
| | SUR.: D415mm | |

| ρ _{cc} | 80% | | | 70% | | | 50% | | | 30% | | | 10% | | | 0 |
|-----------------|------------------------------|------|------|------|------|------|--|------|------|------|------|------|------|------|------|---|
| ρ _w | 50% | 30% | 10% | 50% | 30% | 10% | 50% | 30% | 10% | 50% | 30% | 10% | 50% | 30% | 10% | 0 |
| ρ _{fc} | 20% | | | 20% | | | 20% | | | 20% | | | 20% | | | 0 |
| RCR | RCR:Room Cavity Ratio | | | | | | Wall Exitance Coefficients(WEC) | | | | | | | | | |
| 0.0 | | | | | | | | | | | | | | | | |
| 1.0 | .316 | .180 | .057 | .308 | .176 | .056 | .294 | .168 | .054 | .280 | .162 | .052 | .268 | .155 | .050 | |
| 2.0 | .295 | .161 | .050 | .288 | .159 | .049 | .275 | .153 | .047 | .263 | .147 | .046 | .252 | .142 | .045 | |
| 3.0 | .272 | .145 | .043 | .265 | .142 | .043 | .254 | .138 | .042 | .243 | .133 | .041 | .233 | .129 | .040 | |
| 4.0 | .250 | .130 | .038 | .245 | .128 | .038 | .234 | .124 | .037 | .225 | .121 | .036 | .216 | .117 | .036 | |
| 5.0 | .231 | .118 | .034 | .226 | .116 | .034 | .217 | .113 | .033 | .208 | .110 | .033 | .200 | .107 | .032 | |
| 6.0 | .214 | .107 | .031 | .209 | .106 | .030 | .201 | .103 | .030 | .194 | .101 | .030 | .186 | .098 | .029 | |
| 7.0 | .199 | .098 | .028 | .195 | .097 | .028 | .188 | .095 | .027 | .181 | .093 | .027 | .174 | .090 | .027 | |
| 8.0 | .186 | .091 | .025 | .182 | .090 | .025 | .175 | .088 | .025 | .169 | .086 | .025 | .163 | .084 | .024 | |
| 9.0 | .174 | .084 | .023 | .171 | .083 | .023 | .165 | .081 | .023 | .159 | .080 | .023 | .154 | .078 | .023 | |
| 10.0 | .163 | .078 | .022 | .161 | .078 | .022 | .155 | .076 | .021 | .150 | .074 | .021 | .145 | .073 | .021 | |

| ρ _{cc} | 80% | | | 70% | | | 50% | | | 30% | | | 10% | | | 0 |
|-----------------|------------------------------|------|------|------|------|------|---|------|------|------|------|------|------|------|------|---|
| ρ _w | 50% | 30% | 10% | 50% | 30% | 10% | 50% | 30% | 10% | 50% | 30% | 10% | 50% | 30% | 10% | 0 |
| ρ _{fc} | 20% | | | 20% | | | 20% | | | 20% | | | 20% | | | 0 |
| RCR | RCR:Room Cavity Ratio | | | | | | Ceiling Cavity Exitance Coefficients(CCEC) | | | | | | | | | |
| 0.0 | .208 | .208 | .208 | .178 | .178 | .178 | .121 | .121 | .121 | .070 | .070 | .070 | .022 | .022 | .022 | |
| 1.0 | .199 | .174 | .152 | .170 | .149 | .131 | .116 | .103 | .090 | .067 | .059 | .053 | .021 | .019 | .017 | |
| 2.0 | .191 | .150 | .116 | .163 | .129 | .100 | .112 | .089 | .070 | .065 | .052 | .041 | .021 | .017 | .013 | |
| 3.0 | .183 | .132 | .092 | .157 | .114 | .080 | .108 | .079 | .056 | .062 | .046 | .033 | .020 | .015 | .011 | |
| 4.0 | .175 | .119 | .076 | .150 | .103 | .066 | .103 | .072 | .047 | .060 | .042 | .028 | .019 | .014 | .009 | |
| 5.0 | .168 | .109 | .065 | .144 | .094 | .057 | .099 | .066 | .040 | .057 | .039 | .024 | .019 | .013 | .008 | |
| 6.0 | .161 | .101 | .057 | .138 | .087 | .050 | .095 | .061 | .035 | .055 | .036 | .021 | .018 | .012 | .007 | |
| 7.0 | .154 | .094 | .052 | .132 | .081 | .045 | .091 | .057 | .032 | .053 | .034 | .019 | .017 | .011 | .006 | |
| 8.0 | .147 | .088 | .047 | .127 | .076 | .041 | .088 | .054 | .029 | .051 | .032 | .017 | .017 | .010 | .006 | |
| 9.0 | .141 | .083 | .044 | .122 | .072 | .038 | .084 | .051 | .027 | .049 | .030 | .016 | .016 | .010 | .005 | |
| 10.0 | .135 | .079 | .041 | .117 | .068 | .036 | .081 | .048 | .025 | .047 | .028 | .015 | .015 | .009 | .005 | |

C Range: 0 - 360DEG
C Interval: 30.0DEG
Test Speed: HIGH
Temperature:25.3DEG
Operators:DAMIN
Test Date:2022-05-14

γ Range: 0 - 180DEG
γ Interval: 1.0DEG
Test System:EVERFINE GO-2000A_V1 SYSTEM V2.00.443
Humidity:65.0%
Test Distance:8.000m [K=0.7063]
Remarks:

UGR(Unified Glare Rating) Table

| | | |
|---|-------------------|--|
| Test:U:221.70V I:0.1840A P:39.800W PF:0.9750 Freq:50.00Hz | | |
| Lamp Flux:4933.34x1 lm | | |
| Name: NS40-φ435MM-40W | Type: LED | |
| MFR.: Lumega Group | DIM.: D435*H100mm | |
| | SUR.: D415mm | |

| ceiling/cavity | 0.7 | 0.7 | 0.5 | 0.5 | 0.3 | 0.7 | 0.7 | 0.5 | 0.5 | 0.3 |
|--|----------------------|-------------|-------------|-------------|-------------|----------------------|-------------|-------------|-------------|-------------|
| walls | 0.5 | 0.3 | 0.5 | 0.3 | 0.3 | 0.5 | 0.3 | 0.5 | 0.3 | 0.3 |
| working plane | 0.2 | 0.2 | 0.2 | 0.2 | 0.2 | 0.2 | 0.2 | 0.2 | 0.2 | 0.2 |
| Room dimensions | Viewed crosswise | | | | | Viewed endwise | | | | |
| x = 2H y = 2H | 20.8 | 22.3 | 21.1 | 22.5 | 22.8 | 21.2 | 22.7 | 21.5 | 22.9 | 23.2 |
| 3H | 22.2 | 23.6 | 22.6 | 23.9 | 24.2 | 22.8 | 24.2 | 23.1 | 24.4 | 24.7 |
| 4H | 22.8 | 24.1 | 23.1 | 24.4 | 24.7 | 23.5 | 24.8 | 23.8 | 25.1 | 25.4 |
| 6H | 23.2 | 24.4 | 23.5 | 24.7 | 25.0 | 24.0 | 25.3 | 24.4 | 25.6 | 25.9 |
| 8H | 23.3 | 24.5 | 23.6 | 24.8 | 25.1 | 24.2 | 25.4 | 24.6 | 25.8 | 26.1 |
| 12H | 23.3 | 24.5 | 23.7 | 24.8 | 25.2 | 24.4 | 25.6 | 24.8 | 25.9 | 26.3 |
| 4H 2H | 21.4 | 22.7 | 21.8 | 23.0 | 23.3 | 21.7 | 23.0 | 22.1 | 23.3 | 23.6 |
| 3H | 23.1 | 24.2 | 23.4 | 24.5 | 24.9 | 23.5 | 24.7 | 23.9 | 25.0 | 25.4 |
| 4H | 23.7 | 24.8 | 24.2 | 25.2 | 25.5 | 24.4 | 25.4 | 24.8 | 25.8 | 26.2 |
| 6H | 24.3 | 25.2 | 24.7 | 25.6 | 26.0 | 25.1 | 26.0 | 25.5 | 26.4 | 26.8 |
| 8H | 24.4 | 25.3 | 24.9 | 25.7 | 26.1 | 25.3 | 26.2 | 25.8 | 26.6 | 27.0 |
| 12H | 24.5 | 25.3 | 25.0 | 25.7 | 26.2 | 25.6 | 26.4 | 26.0 | 26.8 | 27.2 |
| 8H 4H | 24.1 | 24.9 | 24.5 | 25.3 | 25.8 | 24.6 | 25.5 | 25.1 | 25.9 | 26.3 |
| 6H | 24.7 | 25.5 | 25.2 | 25.9 | 26.4 | 25.5 | 26.2 | 25.9 | 26.6 | 27.1 |
| 8H | 25.0 | 25.6 | 25.5 | 26.1 | 26.6 | 25.8 | 26.5 | 26.3 | 26.9 | 27.4 |
| 12H | 25.1 | 25.7 | 25.6 | 26.2 | 26.7 | 26.1 | 26.7 | 26.7 | 27.2 | 27.7 |
| 12H 4H | 24.1 | 24.9 | 24.6 | 25.3 | 25.8 | 24.6 | 25.4 | 25.1 | 25.8 | 26.3 |
| 6H | 24.8 | 25.5 | 25.3 | 25.9 | 26.4 | 25.5 | 26.1 | 26.0 | 26.6 | 27.1 |
| 8H | 25.1 | 25.7 | 25.6 | 26.1 | 26.7 | 25.9 | 26.5 | 26.4 | 27.0 | 27.5 |
| Variations with the observer position at spacings(CIE Pub.117): | | | | | | | | | | |
| S = 1.0H | + 0.2 / - 0.2 | | | | | + 0.1 / - 0.2 | | | | |
| 1.5H | + 0.2 / - 0.3 | | | | | + 0.2 / - 0.3 | | | | |
| 2.0H | + 0.2 / - 0.3 | | | | | + 0.1 / - 0.2 | | | | |

CIE Pub.117, 4933 lm Total Lamp Luminous Flux Corrected (8log(F/F0) = 5.5)
 Area: 0.135 m2

C Range: 0 - 360DEG
C Interval: 30.0DEG
Test Speed: HIGH
Temperature:25.3DEG
Operators:DAMIN
Test Date:2022-05-14

γ Range: 0 - 180DEG
γ Interval: 1.0DEG
Test System:EVERFINE GO-2000A_V1 SYSTEM V2.00.443
Humidity:65.0%
Test Distance:8.000m [K=0.7063]
Remarks:

UTILIZATION FACTORS TABLE

| | | |
|---|-------------------|--|
| Test:U:221.70V I:0.1840A P:39.800W PF:0.9750 Freq:50.00Hz Lamp Flux:4933.34x1 lm | | |
| Name: NS40-φ435MM-40W | Type: LED | |
| MFR.: Lumega Group | DIM.: D435*H100mm | |
| | SUR.: D415mm | |

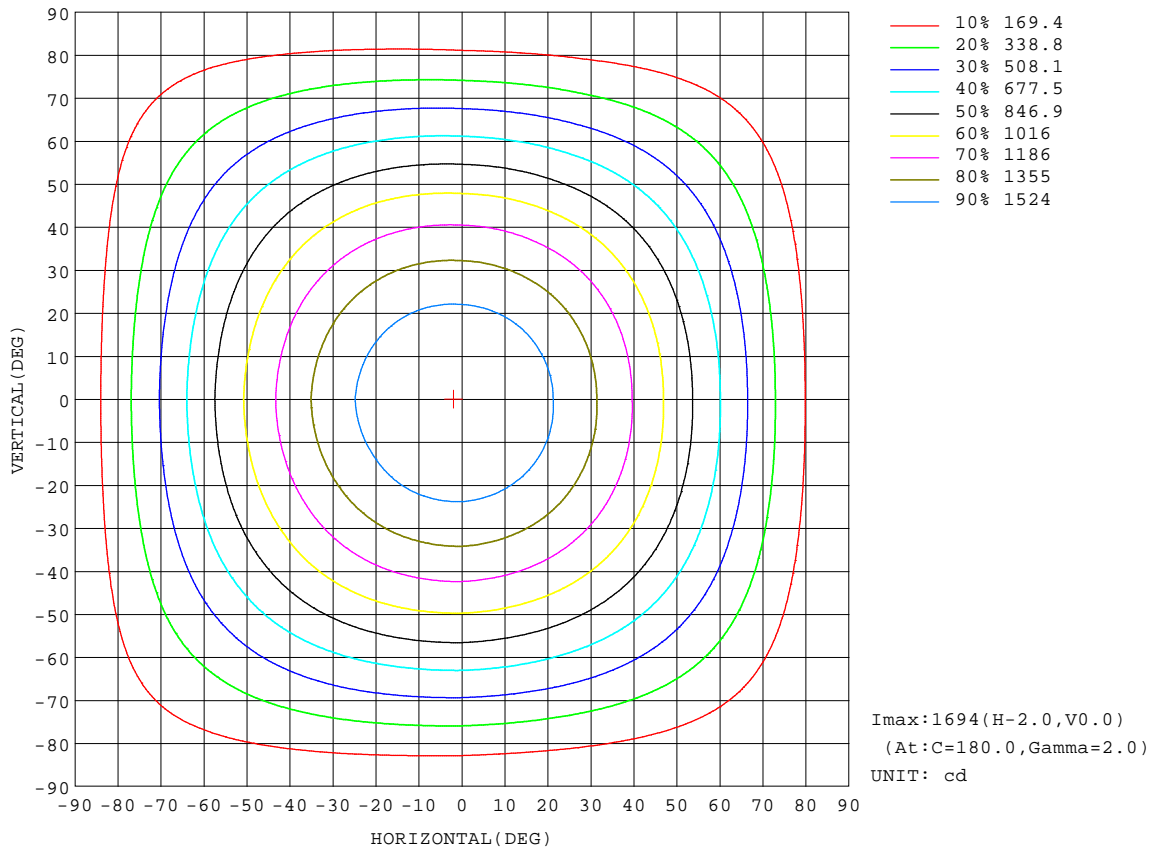
| REFLECTANCE | | | | | | | | | | |
|---|---|-----|------------------|-----|-----|-----|-----|---------------------|-----|---------------|
| Ceiling | 0.8 | 0.8 | 0.8 | 0.7 | 0.7 | 0.7 | 0.5 | 0.5 | 0.5 | 0 |
| Walls | 0.7 | 0.5 | 0.3 | 0.7 | 0.5 | 0.3 | 0.7 | 0.5 | 0.3 | 0 |
| Working plane | 0.2 | 0.2 | 0.2 | 0.2 | 0.2 | 0.2 | 0.2 | 0.2 | 0.2 | 0 |
| ROOM INDEX | UTILIZATION FACTORS(PERCENT) $k(RI) \times RCR = 5$ | | | | | | | | | |
| k = 0.60 | 57 | 45 | 38 | 56 | 45 | 38 | 55 | 44 | 38 | 31 |
| 0.80 | 67 | 55 | 47 | 65 | 54 | 47 | 64 | 53 | 47 | 40 |
| 1.00 | 75 | 64 | 56 | 74 | 63 | 56 | 71 | 64 | 55 | 48 |
| 1.25 | 82 | 71 | 64 | 80 | 71 | 64 | 77 | 69 | 63 | 55 |
| 1.50 | 87 | 77 | 70 | 85 | 76 | 69 | 82 | 74 | 68 | 60 |
| 2.00 | 94 | 85 | 79 | 92 | 84 | 78 | 88 | 81 | 76 | 68 |
| 2.50 | 98 | 90 | 84 | 96 | 88 | 83 | 91 | 85 | 80 | 72 |
| 3.00 | 101 | 94 | 88 | 99 | 92 | 87 | 94 | 89 | 85 | 76 |
| 4.00 | 105 | 99 | 95 | 103 | 97 | 93 | 98 | 94 | 90 | 80 |
| 5.00 | 108 | 103 | 99 | 105 | 101 | 97 | 100 | 97 | 93 | 83 |
| ROOM INDEX | UF(total) | | | | | | | | | Direct |
| According to DIN EN 13032-2 2004 | | | Suspended | | | | | SHRNM = 1.25 | | |

C Range: 0 - 360DEG
C Interval: 30.0DEG
Test Speed: HIGH
Temperature:25.3DEG
Operators:DAMIN
Test Date:2022-05-14

γ Range: 0 - 180DEG
γ Interval: 1.0DEG
Test System:EVERFINE GO-2000A_V1 SYSTEM V2.00.443
Humidity:65.0%
Test Distance:8.000m [K=0.7063]
Remarks:

ISOCANDELA DIAGRAM

| | | |
|---|-------------------|--|
| Test:U:221.70V I:0.1840A P:39.800W PF:0.9750 Freq:50.00Hz | | |
| Lamp Flux:4933.34x1 lm | | |
| Name: NS40-φ435MM-40W | Type: LED | |
| MFR.: Lumega Group | DIM.: D435*H100mm | |
| | SUR.: D415mm | |



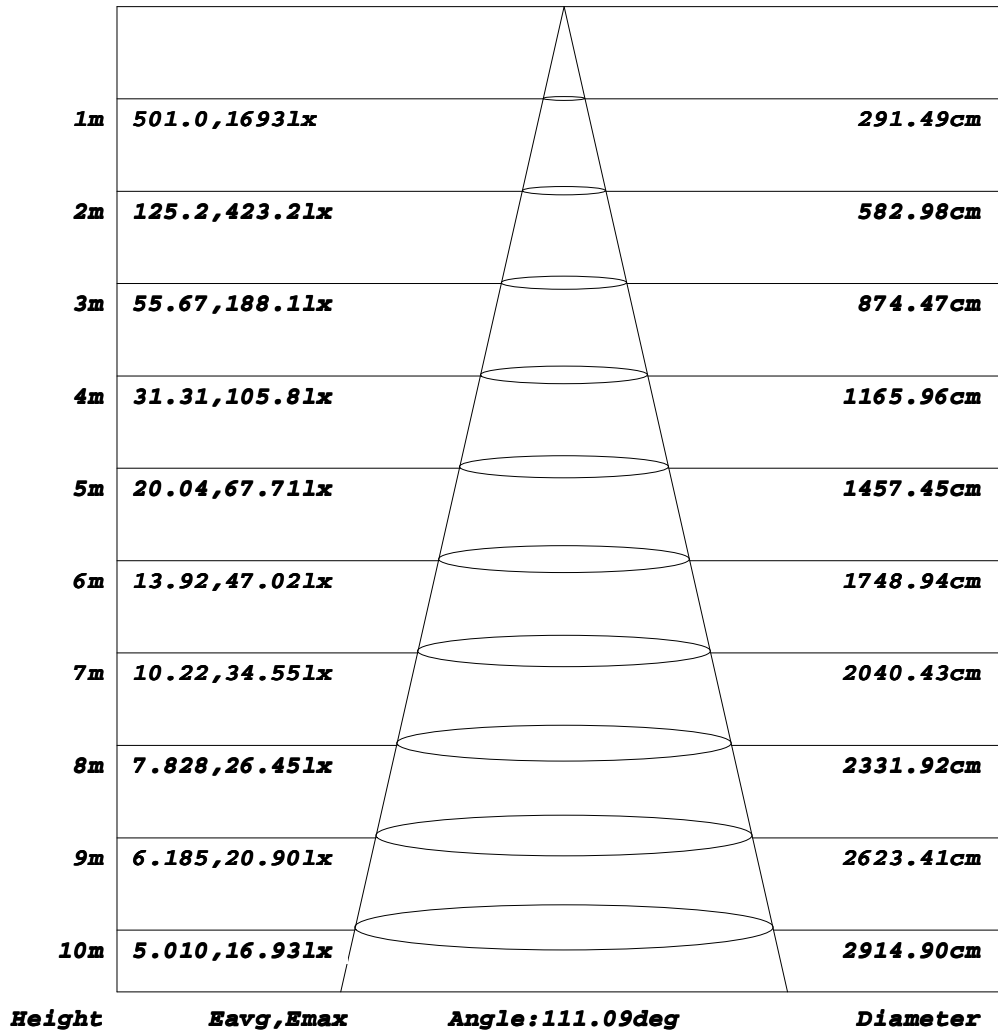
C Range: 0 - 360DEG
C Interval: 30.0DEG
Test Speed: HIGH
Temperature:25.3DEG
Operators:DAMIN
Test Date:2022-05-14

γ Range: 0 - 180DEG
γ Interval: 1.0DEG
Test System:EVERFINE GO-2000A_V1 SYSTEM V2.00.443
Humidity:65.0%
Test Distance:8.000m [K=0.7063]
Remarks:

AAI Figure

| | | |
|---|-------------------|--|
| Test:U:221.70V I:0.1840A P:39.800W PF:0.9750 Freq:50.00Hz | | |
| Lamp Flux:4933.34x1 lm | | |
| Name: NS40-φ435MM-40W | Type: LED | |
| MFR.: Lumega Group | DIM.: D435*H100mm | |
| | SUR.: D415mm | |

Flux out:3459 lm



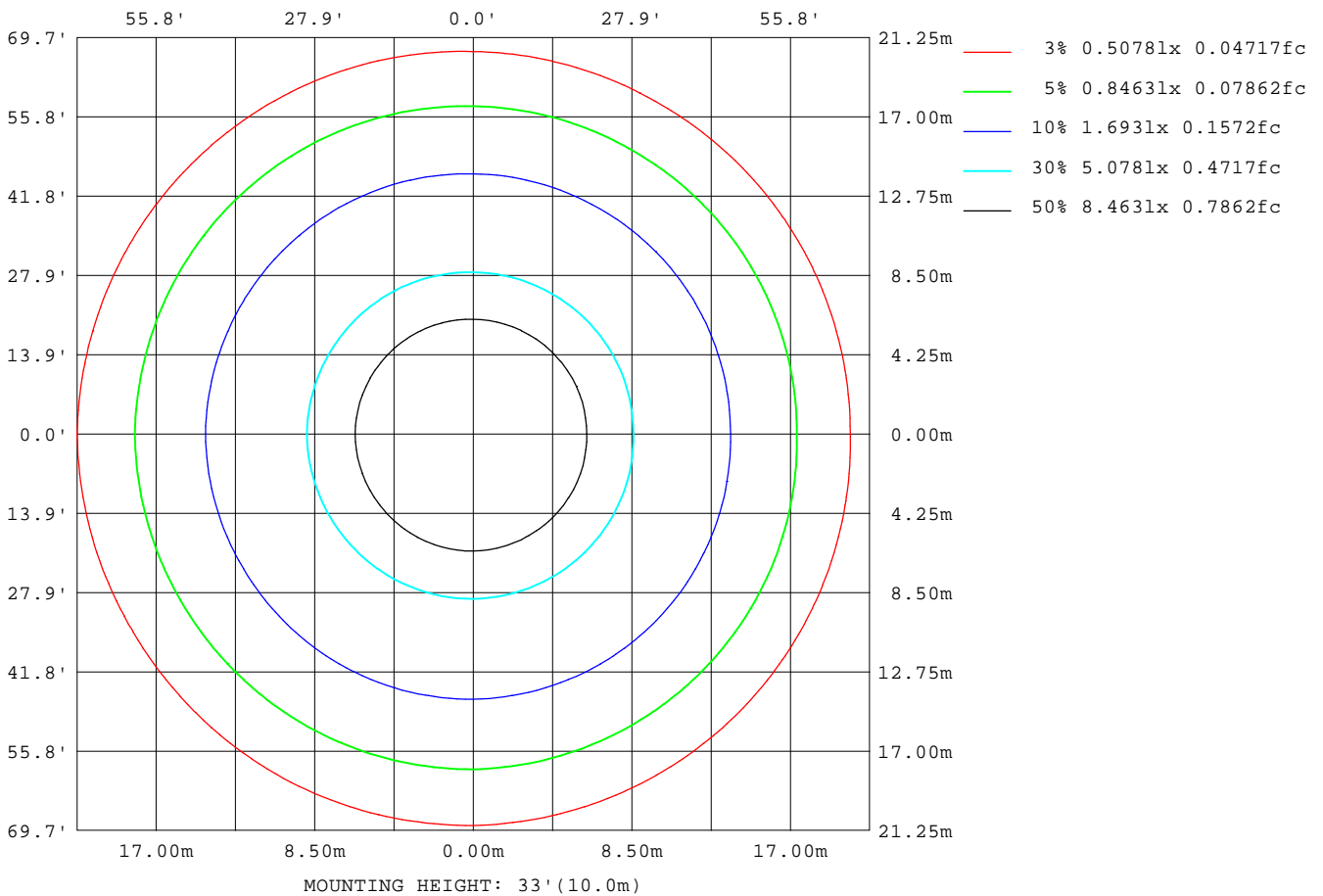
Note: The Curves indicate the illuminated area and the average illumination when the luminaire is at different distance.

C Range: 0 - 360DEG
C Interval: 30.0DEG
Test Speed: HIGH
Temperature: 25.3DEG
Operators: DAMIN
Test Date: 2022-05-14

γ Range: 0 - 180DEG
γ Interval: 1.0DEG
Test System: EVERFINE GO-2000A_V1 SYSTEM V2.00.443
Humidity: 65.0%
Test Distance: 8.000m [K=0.7063]
Remarks:

ISOLUX DIAGRAM

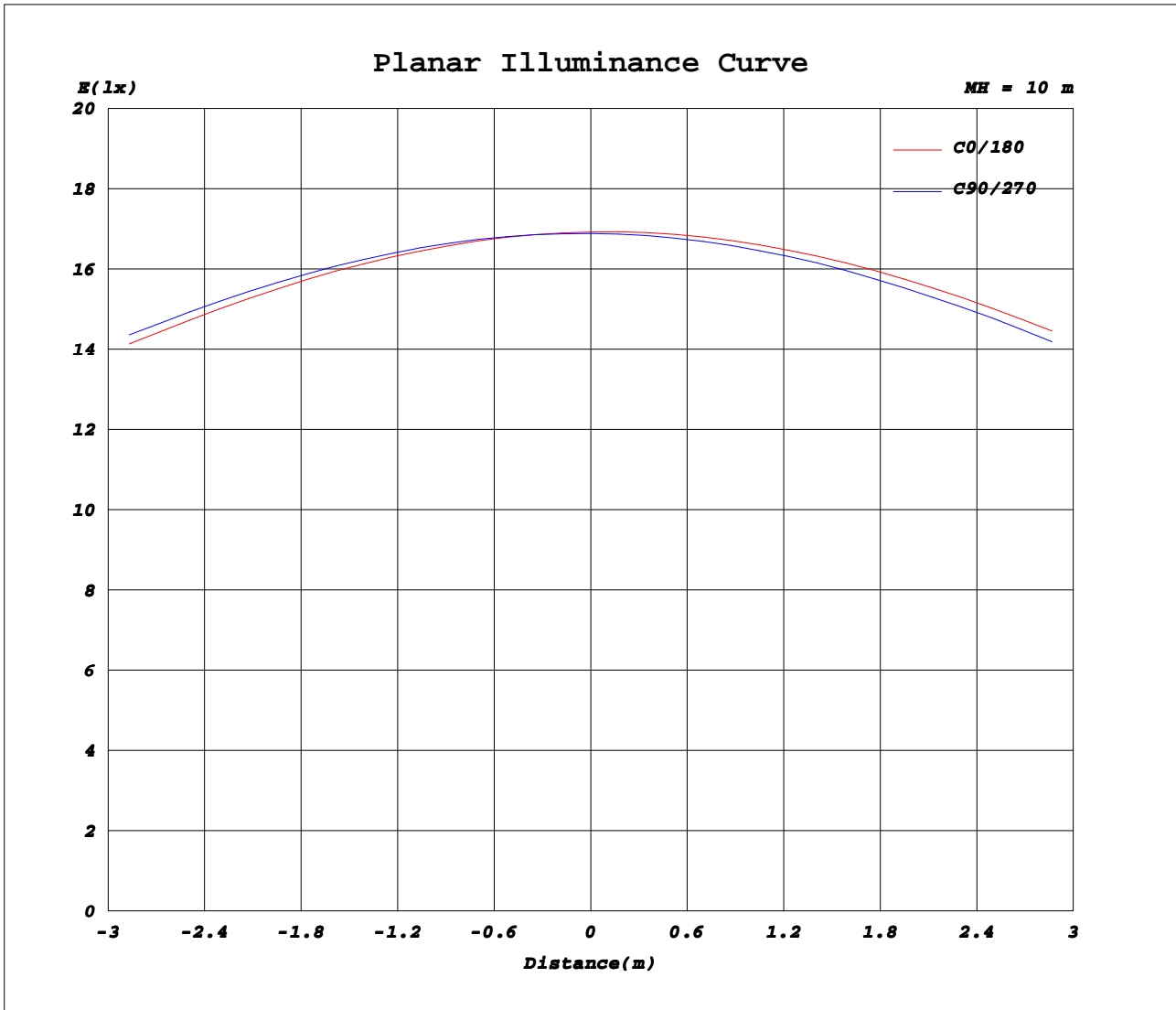
| | | |
|---|-------------------|--|
| Test:U:221.70V I:0.1840A P:39.800W PF:0.9750 Freq:50.00Hz | | |
| Lamp Flux:4933.34x1 lm | | |
| Name: NS40-φ435MM-40W | Type: LED | |
| MFR.: Lumega Group | DIM.: D435*H100mm | |
| | SUR.: D415mm | |



C Range: 0 - 360DEG
C Interval: 30.0DEG
Test Speed: HIGH
Temperature: 25.3DEG
Operators: DAMIN
Test Date: 2022-05-14

γ Range: 0 - 180DEG
γ Interval: 1.0DEG
Test System: EVERFINE GO-2000A_V1 SYSTEM V2.00.443
Humidity: 65.0%
Test Distance: 8.000m [K=0.7063]
Remarks:

Planar Illuminance Curve



C Range: 0 - 360DEG
C Interval: 30.0DEG
Test Speed: HIGH
Temperature: 25.3DEG
Operators: DAMIN
Test Date: 2022-05-14

γ Range: 0 - 180DEG
γ Interval: 1.0DEG
Test System: EVERFINE GO-2000A_V1 SYSTEM V2.00.443
Humidity: 65.0%
Test Distance: 8.000m [K=0.7063]
Remarks:

LUMINOUS DISTRIBUTION INTENSITY DATA

| | | |
|---|-------------------|--|
| Test:U:221.70V I:0.1840A P:39.800W PF:0.9750 Freq:50.00Hz | | |
| Lamp Flux:4933.34x1 lm | | |
| Name: NS40-φ435MM-40W | Type: LED | |
| MFR.: Lumega Group | DIM.: D435*H100mm | |
| | SUR.: D415mm | |

Table--1

UNIT: cd

| C (DEG) \ γ (DEG) | 0 | 30 | 60 | 90 | 120 | 150 | 180 | 210 | 240 | 270 | 300 | 330 | | | | | | | |
|-------------------|------|------|------|------|------|------|------|------|------|------|------|------|--|--|--|--|--|--|--|
| 0 | 1693 | 1691 | 1689 | 1689 | 1689 | 1688 | 1693 | 1691 | 1689 | 1689 | 1689 | 1688 | | | | | | | |
| 5 | 1678 | 1679 | 1681 | 1684 | 1685 | 1685 | 1691 | 1685 | 1682 | 1678 | 1676 | 1675 | | | | | | | |
| 10 | 1648 | 1652 | 1657 | 1663 | 1665 | 1666 | 1672 | 1663 | 1658 | 1650 | 1648 | 1644 | | | | | | | |
| 15 | 1602 | 1609 | 1618 | 1626 | 1630 | 1630 | 1637 | 1627 | 1619 | 1608 | 1603 | 1599 | | | | | | | |
| 20 | 1542 | 1552 | 1563 | 1574 | 1579 | 1579 | 1587 | 1575 | 1565 | 1551 | 1545 | 1540 | | | | | | | |
| 25 | 1467 | 1481 | 1495 | 1508 | 1513 | 1514 | 1522 | 1510 | 1496 | 1480 | 1471 | 1467 | | | | | | | |
| 30 | 1381 | 1397 | 1414 | 1430 | 1435 | 1436 | 1445 | 1431 | 1415 | 1396 | 1385 | 1382 | | | | | | | |
| 35 | 1283 | 1303 | 1321 | 1340 | 1345 | 1347 | 1357 | 1340 | 1322 | 1301 | 1288 | 1285 | | | | | | | |
| 40 | 1176 | 1198 | 1218 | 1239 | 1245 | 1247 | 1258 | 1239 | 1219 | 1195 | 1182 | 1179 | | | | | | | |
| 45 | 1060 | 1084 | 1105 | 1128 | 1134 | 1138 | 1148 | 1129 | 1107 | 1082 | 1068 | 1064 | | | | | | | |
| 50 | 940 | 963 | 988 | 1011 | 1019 | 1020 | 1036 | 1012 | 993 | 963 | 950 | 943 | | | | | | | |
| 55 | 812 | 836 | 862 | 886 | 895 | 897 | 910 | 889 | 865 | 837 | 820 | 816 | | | | | | | |
| 60 | 680 | 706 | 733 | 761 | 766 | 771 | 782 | 760 | 736 | 706 | 689 | 684 | | | | | | | |
| 65 | 547 | 573 | 600 | 624 | 635 | 637 | 651 | 630 | 605 | 576 | 557 | 552 | | | | | | | |
| 70 | 413 | 439 | 468 | 492 | 502 | 503 | 518 | 498 | 472 | 444 | 424 | 419 | | | | | | | |
| 75 | 285 | 314 | 337 | 363 | 371 | 375 | 387 | 368 | 344 | 316 | 297 | 292 | | | | | | | |
| 80 | 165 | 191 | 212 | 237 | 245 | 249 | 262 | 244 | 221 | 195 | 178 | 174 | | | | | | | |
| 85 | 62.7 | 80.9 | 100 | 121 | 131 | 135 | 148 | 132 | 110 | 86.5 | 76.4 | 71.8 | | | | | | | |
| 90 | 8.75 | 9.76 | 10.7 | 21.9 | 32.7 | 37.8 | 48.5 | 35.4 | 22.3 | 11.3 | 11.2 | 11.3 | | | | | | | |
| 95 | 10.1 | 10.0 | 9.26 | 8.91 | 9.82 | 9.86 | 11.8 | 11.9 | 12.1 | 12.3 | 12.4 | 12.5 | | | | | | | |
| 100 | 11.5 | 10.9 | 10.6 | 10.3 | 10.1 | 10.4 | 13.0 | 13.2 | 13.4 | 13.6 | 13.7 | 13.8 | | | | | | | |
| 105 | 12.9 | 12.3 | 12.0 | 11.7 | 11.5 | 11.5 | 14.4 | 14.6 | 14.7 | 15.0 | 15.1 | 15.2 | | | | | | | |
| 110 | 14.4 | 13.8 | 13.5 | 13.2 | 13.0 | 13.0 | 15.8 | 15.9 | 16.1 | 16.4 | 16.4 | 16.5 | | | | | | | |
| 115 | 15.8 | 15.2 | 14.9 | 14.7 | 14.4 | 14.4 | 17.1 | 17.2 | 17.4 | 17.7 | 17.8 | 17.8 | | | | | | | |
| 120 | 17.2 | 16.6 | 16.3 | 16.0 | 15.8 | 15.8 | 18.4 | 18.5 | 18.7 | 19.0 | 19.1 | 19.2 | | | | | | | |
| 125 | 18.5 | 18.0 | 17.7 | 17.5 | 17.3 | 17.2 | 19.8 | 19.8 | 20.0 | 20.3 | 20.4 | 20.5 | | | | | | | |
| 130 | 19.8 | 19.4 | 19.1 | 18.8 | 18.7 | 18.6 | 21.0 | 21.1 | 21.3 | 21.5 | 21.6 | 21.7 | | | | | | | |
| 135 | 21.1 | 20.7 | 20.3 | 20.2 | 20.0 | 19.9 | 22.2 | 22.3 | 22.5 | 22.7 | 22.8 | 22.9 | | | | | | | |
| 140 | 22.4 | 21.9 | 21.6 | 21.5 | 21.3 | 21.2 | 23.4 | 23.5 | 23.6 | 23.8 | 23.9 | 24.0 | | | | | | | |
| 145 | 23.6 | 23.1 | 22.8 | 22.7 | 22.6 | 22.5 | 24.5 | 24.6 | 24.7 | 24.8 | 24.9 | 25.0 | | | | | | | |
| 150 | 24.9 | 24.4 | 24.1 | 24.1 | 23.9 | 23.8 | 25.6 | 25.6 | 25.7 | 25.8 | 25.8 | 26.0 | | | | | | | |
| 155 | 26.2 | 25.8 | 25.4 | 25.5 | 25.3 | 25.2 | 26.7 | 26.6 | 26.8 | 26.8 | 26.8 | 27.0 | | | | | | | |
| 160 | 27.5 | 27.0 | 26.7 | 26.9 | 26.7 | 26.6 | 27.8 | 27.6 | 27.8 | 27.9 | 27.7 | 28.0 | | | | | | | |
| 165 | 28.7 | 28.3 | 28.0 | 28.3 | 28.0 | 28.0 | 28.8 | 28.6 | 28.8 | 28.9 | 28.6 | 28.9 | | | | | | | |
| 170 | 29.6 | 29.3 | 29.1 | 29.3 | 29.0 | 29.0 | 29.6 | 29.4 | 29.5 | 29.6 | 29.4 | 29.6 | | | | | | | |
| 175 | 30.3 | 29.9 | 29.8 | 30.1 | 29.7 | 29.7 | 30.1 | 29.9 | 29.9 | 30.1 | 29.8 | 29.9 | | | | | | | |
| 180 | 30.4 | 30.1 | 30.1 | 30.3 | 30.0 | 30.0 | 30.4 | 30.1 | 30.1 | 30.3 | 30.0 | 30.0 | | | | | | | |

C Range: 0 - 360DEG
C Interval: 30.0DEG
Test Speed: HIGH
Temperature: 25.3DEG
Operators: DAMIN
Test Date: 2022-05-14

γ Range: 0 - 180DEG
γ Interval: 1.0DEG
Test System: EVERFINE GO-2000A_V1 SYSTEM V2.00.443
Humidity: 65.0%
Test Distance: 8.000m [K=0.7063]
Remarks: