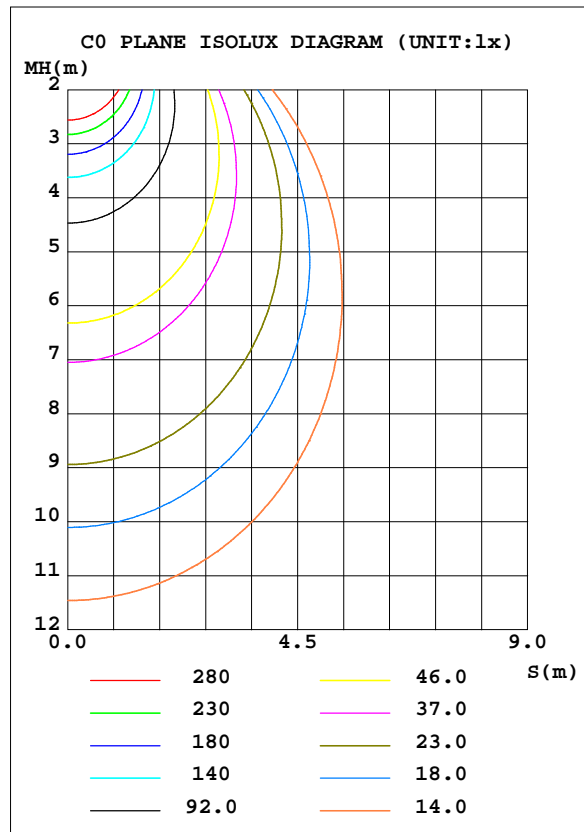
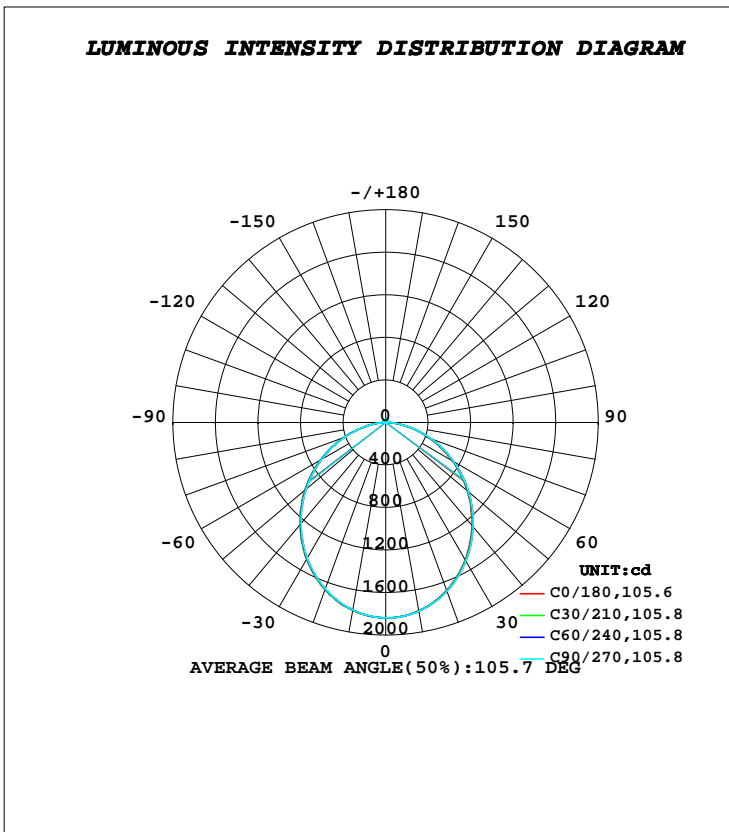


**LUMINAIRE PHOTOMETRIC TEST REPORT**

Test:U:221.70V I:0.2190A P:47.200W PF:0.9680 Freq:50.00Hz		
Lamp Flux:4993.63x1 lm		
Name: NS41-φ900MM-47W	Type: LED	
MFR.: Lumega Group	DIM.: D900*70mm	
	SUR.: D900mm	

DATA OF LAMP		PHOTOMETRIC DATA Eff: 105.80 lm/W			
MODEL		I <sub>max</sub> (cd)	1838	S/MH(C0/180)	1.22
NOMINAL POWER(W)	47	LOR(%)	100.0	S/MH(C90/270)	1.23
RATED VOLTAGE(V)	220	TOTAL FLUX(lm)	4993.6	η UP, DN(C0-180)	1.2, 49.6
NOMINAL FLUX(lm)	4993.63	CIE CLASS	DIRECT	η UP, DN(C180-360)	1.3, 47.9
LAMPS INSIDE	1	η up(%)	2.4	CIBSE SHR NOM	1.25
TEST VOLTAGE(V)	220	η down(%)	97.6	CIBSE SHR MAX	1.35



**C Range: 0 - 360DEG**  
**C Interval: 30.0DEG**  
**Test Speed: HIGH**  
**Temperature: 25.3DEG**  
**Operators: DAMIN**  
**Test Date: 2022-05-04**

**γ Range: 0 - 180DEG**  
**γ Interval: 1.0DEG**  
**Test System: EVERFINE GO-2000A\_V1 SYSTEM V2.00.443**  
**Humidity: 65.0%**  
**Test Distance: 8.000m [K=0.7063]**  
**Remarks:**

**ZONAL FLUX DIAGRAM**

**ZONAL FLUX DIAGRAM:**

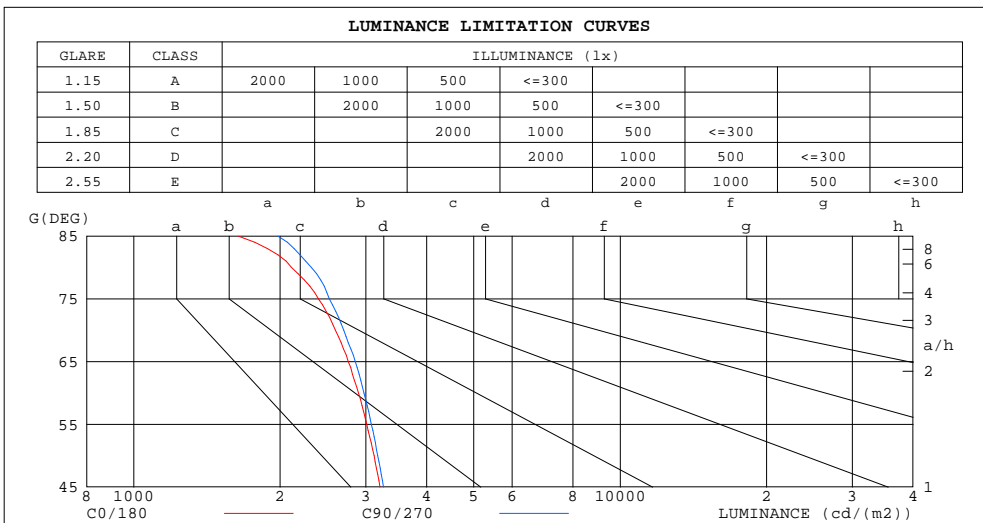
$\gamma$	C0	C45	C90	C135	C180	C225	C270	C315	$\gamma$	$\Phi$ zone	$\Phi$ total	%lum,lamp
10	1798	1801	1802	1799	1795	1791	1788	1791	0- 10	173.4	173.4	3.47,3.47
20	1679	1686	1687	1681	1673	1667	1664	1669	10- 20	491.9	665.3	13.3,13.3
30	1495	1505	1508	1499	1488	1479	1475	1481	20- 30	732.4	1398	28,28
40	1264	1277	1281	1269	1254	1244	1239	1247	30- 40	862.8	2260	45.3,45.3
50	1002	1016	1020	1010	994.8	981.8	974.7	983.3	40- 50	872.3	3133	62.7,62.7
60	724.2	739.2	743.0	729.4	711.8	699.1	693.3	703.3	50- 60	767.6	3900	78.1,78.1
70	444.6	459.3	462.5	447.3	428.4	416.9	412.6	423.3	60- 70	570.8	4471	89.5,89.5
80	183.3	197.8	201.3	187.2	169.4	157.7	153.0	163.0	70- 80	320.3	4792	96,96
90	9.049	8.962	9.299	10.38	11.46	11.82	11.66	10.67	80- 90	80.68	4872	97.6,97.6
100	10.56	10.11	10.41	12.03	13.67	14.06	13.73	12.50	90-100	12.02	4884	97.8,97.8
110	13.32	12.99	13.31	14.74	16.20	16.58	16.30	15.15	100-110	14.22	4898	98.1,98.1
120	16.59	16.44	16.81	18.11	19.40	19.83	19.62	18.47	110-120	16.31	4915	98.4,98.4
130	19.99	19.97	20.36	21.47	22.58	23.06	22.96	21.85	120-130	17.78	4933	98.8,98.8
140	23.53	23.57	23.93	24.89	25.85	26.31	26.25	25.24	130-140	17.96	4951	99.1,99.1
150	27.07	26.98	27.27	28.21	29.14	29.48	29.35	28.48	140-150	16.70	4967	99.5,99.5
160	30.87	30.65	30.78	31.54	32.28	32.26	31.96	31.50	150-160	13.76	4981	99.7,99.7
170	34.58	34.11	33.98	34.47	34.94	34.66	34.29	34.33	160-170	9.312	4990	99.9,99.9
180	36.17	35.59	35.36	35.77	36.18	35.77	35.36	35.58	170-180	3.347	4994	100,100
DEG	LUMINOUS INTENSITY:cd									UNIT:lm		

**C Range: 0 - 360DEG**  
**C Interval: 30.0DEG**  
**Test Speed: HIGH**  
**Temperature:25.3DEG**  
**Operators:DAMIN**  
**Test Date:2022-05-04**

**$\gamma$  Range: 0 - 180DEG**  
 **$\gamma$  Interval: 1.0DEG**  
**Test System:EVERFINE GO-2000A\_V1 SYSTEM V2.00.443**  
**Humidity:65.0%**  
**Test Distance:8.000m [K=0.7063]**  
**Remarks:**

**LUMINANCE LIMITATION CURVES**

Test:U:221.70V I:0.2190A P:47.200W PF:0.9680 Freq:50.00Hz		
Lamp Flux:4993.63x1 lm		
Name: NS41-φ900MM-47W	Type: LED	
MFR.: Lumega Group	DIM.: D900*70mm	
	SUR.: D900mm	



LUMINANCE cd/(m2)		
G(DEG)	C0/180	C90/270
85	1642	1981
80	2111	2318
75	2398	2525
70	2600	2705
65	2762	2853
60	2897	2972
55	3014	3080
50	3119	3174
45	3207	3263

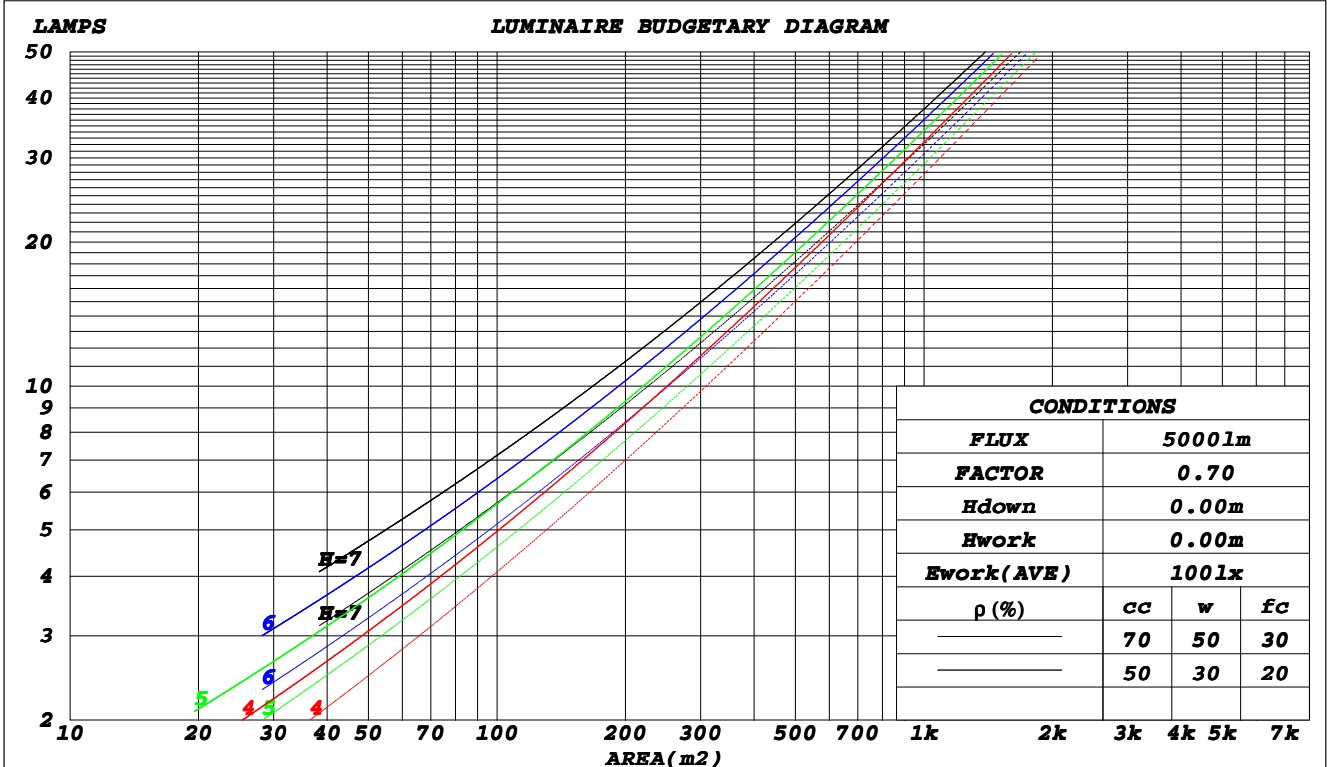
**C Range: 0 - 360DEG**  
**C Interval: 30.0DEG**  
**Test Speed: HIGH**  
**Temperature: 25.3DEG**  
**Operators: DAMIN**  
**Test Date: 2022-05-04**

**γ Range: 0 - 180DEG**  
**γ Interval: 1.0DEG**  
**Test System: EVERFINE GO-2000A\_V1 SYSTEM V2.00.443**  
**Humidity: 65.0%**  
**Test Distance: 8.000m [K=0.7063]**  
**Remarks:**

**CU AND LUMINAIRE BUDGETARY ESTIMATE DIAGRAM**

Test:U:221.70V I:0.2190A P:47.200W PF:0.9680 Freq:50.00Hz		
Lamp Flux:4993.63x1 lm		
Name: NS41-φ900MM-47W	Type: LED	
MFR.: Lumega Group	DIM.: D900*70mm	
	SUR.: D900mm	

ρ <sub>cc</sub>	80%			70%			50%			30%			10%			0
ρ <sub>w</sub>	50%	30%	10%	50%	30%	10%	50%	30%	10%	50%	30%	10%	50%	30%	10%	0
ρ <sub>fc</sub>	20%			20%			20%			20%			20%			0
<b>RCR</b>	<b>RCR:Room Cavity Ratio</b>						<b>Coefficients of Utilization(CU)</b>									
0.0	1.18	1.18	1.18	1.15	1.15	1.15	1.10	1.10	1.10	1.05	1.05	1.05	.00	.00	.00	.98
1.0	1.04	.00	.96	1.01	.97	.94	.97	.93	.91	.92	.90	.87	.88	.86	.84	.82
2.0	.91	.84	.78	.89	.82	.77	.85	.79	.75	.81	.77	.73	.78	.74	.71	.69
3.0	.80	.72	.65	.78	.71	.65	.75	.68	.63	.72	.66	.62	.69	.64	.60	.58
4.0	.71	.62	.55	.69	.61	.55	.66	.59	.54	.64	.58	.53	.61	.56	.52	.50
5.0	.63	.54	.48	.62	.54	.47	.60	.52	.47	.57	.51	.46	.55	.50	.45	.43
6.0	.57	.48	.42	.56	.48	.42	.54	.46	.41	.52	.45	.40	.50	.44	.40	.38
7.0	.52	.43	.37	.51	.43	.37	.49	.42	.36	.47	.41	.36	.46	.40	.35	.33
8.0	.47	.39	.33	.46	.38	.33	.45	.38	.33	.44	.37	.32	.42	.36	.32	.30
9.0	.43	.35	.30	.43	.35	.30	.41	.34	.29	.40	.34	.29	.39	.33	.29	.27
10.0	.40	.32	.27	.39	.32	.27	.38	.31	.27	.37	.31	.26	.36	.30	.26	.24



C Range: 0 - 360DEG  
 C Interval: 30.0DEG  
 Test Speed: HIGH  
 Temperature: 25.3DEG  
 Operators: DAMIN  
 Test Date: 2022-05-04

γ Range: 0 - 180DEG  
 γ Interval: 1.0DEG  
 Test System: EVERFINE GO-2000A\_V1 SYSTEM V2.00.443  
 Humidity: 65.0%  
 Test Distance: 8.000m [K=0.7063]  
 Remarks:

**WEC AND CCEC**

Test:U:221.70V I:0.2190A P:47.200W PF:0.9680 Freq:50.00Hz		
Lamp Flux:4993.63x1 lm		
Name: NS41-φ900MM-47W	Type: LED	
MFR.: Lumega Group	DIM.: D900*70mm	
	SUR.: D900mm	

ρ <sub>cc</sub>	80%			70%			50%			30%			10%			0
ρ <sub>w</sub>	50%	30%	10%	50%	30%	10%	50%	30%	10%	50%	30%	10%	50%	30%	10%	0
ρ <sub>fc</sub>	20%			20%			20%			20%			20%			0
<b>RCR</b>	<b>RCR:Room Cavity Ratio</b>						<b>Wall Exitance Coefficients(WEC)</b>									
0.0																
1.0	.301	.171	.054	.294	.167	.053	.279	.160	.051	.265	.153	.049	.253	.147	.047	
2.0	.285	.156	.048	.278	.153	.047	.265	.147	.046	.253	.142	.044	.242	.137	.043	
3.0	.264	.140	.042	.258	.138	.042	.246	.134	.041	.236	.129	.040	.226	.125	.039	
4.0	.244	.127	.037	.239	.125	.037	.228	.121	.036	.219	.118	.035	.210	.114	.035	
5.0	.226	.115	.033	.221	.114	.033	.212	.110	.033	.204	.107	.032	.196	.105	.031	
6.0	.210	.105	.030	.206	.104	.030	.197	.101	.029	.190	.099	.029	.183	.096	.029	
7.0	.196	.097	.027	.192	.096	.027	.184	.093	.027	.178	.091	.026	.171	.089	.026	
8.0	.183	.089	.025	.179	.088	.025	.173	.086	.025	.167	.084	.024	.161	.083	.024	
9.0	.172	.083	.023	.168	.082	.023	.162	.080	.023	.157	.079	.022	.151	.077	.022	
10.0	.161	.077	.021	.159	.077	.021	.153	.075	.021	.148	.074	.021	.143	.072	.021	

ρ <sub>cc</sub>	80%			70%			50%			30%			10%			0
ρ <sub>w</sub>	50%	30%	10%	50%	30%	10%	50%	30%	10%	50%	30%	10%	50%	30%	10%	0
ρ <sub>fc</sub>	20%			20%			20%			20%			20%			0
<b>RCR</b>	<b>RCR:Room Cavity Ratio</b>						<b>Ceiling Cavity Exitance Coefficients(CCEC)</b>									
0.0	.209	.209	.209	.179	.179	.179	.122	.122	.122	.070	.070	.070	.022	.022	.022	
1.0	.198	.175	.154	.170	.150	.132	.116	.103	.091	.067	.060	.053	.021	.019	.017	
2.0	.190	.151	.118	.163	.130	.102	.112	.090	.071	.064	.052	.042	.021	.017	.014	
3.0	.182	.133	.094	.156	.115	.082	.107	.080	.057	.062	.047	.034	.020	.015	.011	
4.0	.175	.120	.078	.150	.104	.068	.103	.072	.048	.060	.042	.028	.019	.014	.009	
5.0	.167	.109	.067	.144	.095	.058	.099	.066	.041	.057	.039	.024	.018	.013	.008	
6.0	.160	.101	.059	.138	.088	.051	.095	.061	.036	.055	.036	.022	.018	.012	.007	
7.0	.153	.094	.053	.132	.082	.046	.091	.057	.033	.053	.034	.019	.017	.011	.006	
8.0	.147	.088	.048	.127	.077	.042	.088	.054	.030	.051	.032	.018	.016	.010	.006	
9.0	.141	.084	.045	.121	.072	.039	.084	.051	.028	.049	.030	.017	.016	.010	.005	
10.0	.135	.079	.042	.117	.069	.037	.081	.048	.026	.047	.029	.016	.015	.009	.005	

**C Range: 0 - 360DEG**  
**C Interval: 30.0DEG**  
**Test Speed: HIGH**  
**Temperature:25.3DEG**  
**Operators:DAMIN**  
**Test Date:2022-05-04**

**γ Range: 0 - 180DEG**  
**γ Interval: 1.0DEG**  
**Test System:EVERFINE GO-2000A\_V1 SYSTEM V2.00.443**  
**Humidity:65.0%**  
**Test Distance:8.000m [K=0.7063]**  
**Remarks:**

**UGR(Unified Glare Rating) Table**

Test:U:221.70V I:0.2190A P:47.200W PF:0.9680 Freq:50.00Hz		
Lamp Flux:4993.63x1 lm		
Name: NS41-φ900MM-47W	Type: LED	
MFR.: Lumega Group	DIM.: D900*70mm	
	SUR.: D900mm	

ceiling/cavity	0.7	0.7	0.5	0.5	0.3	0.7	0.7	0.5	0.5	0.3
walls	0.5	0.3	0.5	0.3	0.3	0.5	0.3	0.5	0.3	0.3
working plane	0.2	0.2	0.2	0.2	0.2	0.2	0.2	0.2	0.2	0.2
Room dimensions	Viewed crosswise					Viewed endwise				
<b>x = 2H y = 2H</b>	16.6	18.0	16.9	18.3	18.5	16.7	18.1	17.0	18.4	18.6
3H	18.0	19.4	18.4	19.6	19.9	18.2	19.5	18.5	19.8	20.1
4H	18.6	19.9	18.9	20.2	20.5	18.8	20.0	19.1	20.3	20.6
6H	19.0	20.2	19.4	20.5	20.8	19.2	20.4	19.6	20.7	21.0
8H	19.1	20.3	19.5	20.6	20.9	19.3	20.5	19.7	20.8	21.2
12H	19.2	20.3	19.6	20.6	21.0	19.4	20.5	19.8	20.9	21.2
<b>4H 2H</b>	17.2	18.5	17.5	18.7	19.1	17.2	18.5	17.6	18.8	19.1
3H	18.8	19.9	19.2	20.3	20.6	18.9	20.0	19.3	20.4	20.7
4H	19.5	20.5	19.9	20.9	21.3	19.6	20.7	20.1	21.0	21.4
6H	20.0	20.9	20.5	21.3	21.8	20.2	21.1	20.7	21.5	21.9
8H	20.2	21.1	20.7	21.5	21.9	20.4	21.3	20.9	21.7	22.1
12H	20.3	21.1	20.8	21.5	22.0	20.6	21.3	21.0	21.8	22.2
<b>8H 4H</b>	19.8	20.6	20.2	21.0	21.5	19.9	20.7	20.4	21.2	21.6
6H	20.5	21.2	20.9	21.6	22.1	20.6	21.3	21.1	21.8	22.3
8H	20.7	21.3	21.2	21.8	22.3	20.9	21.5	21.4	22.0	22.5
12H	20.9	21.4	21.4	21.9	22.4	21.1	21.7	21.6	22.2	22.7
<b>12H 4H</b>	19.8	20.6	20.3	21.0	21.5	19.9	20.7	20.4	21.1	21.6
6H	20.5	21.1	21.0	21.6	22.1	20.7	21.3	21.2	21.8	22.3
8H	20.8	21.4	21.3	21.8	22.4	21.0	21.5	21.5	22.0	22.6
<b>Variations with the observer position at spacings(CIE Pub.117):</b>										
<b>S = 1.0H</b>	+ 0.2 / - 0.2					+ 0.2 / - 0.2				
1.5H	+ 0.2 / - 0.3					+ 0.2 / - 0.3				
2.0H	+ 0.2 / - 0.3					+ 0.2 / - 0.3				

CIE Pub.117, 4994 lm Total Lamp Luminous Flux Corrected (8log(F/F0) = 5.6)  
 Area: 0.5 m2

**C Range: 0 - 360DEG**  
**C Interval: 30.0DEG**  
**Test Speed: HIGH**  
**Temperature:25.3DEG**  
**Operators:DAMIN**  
**Test Date:2022-05-04**

**γ Range: 0 - 180DEG**  
**γ Interval: 1.0DEG**  
**Test System:EVERFINE GO-2000A\_V1 SYSTEM V2.00.443**  
**Humidity:65.0%**  
**Test Distance:8.000m [K=0.7063]**  
**Remarks:**

**UTILIZATION FACTORS TABLE**

Test:U:221.70V I:0.2190A P:47.200W PF:0.9680 Freq:50.00Hz Lamp Flux:4993.63x1 lm		
Name: NS41-φ900MM-47W	Type: LED	
MFR.: Lumega Group	DIM.: D900*70mm	
	SUR.: D900mm	

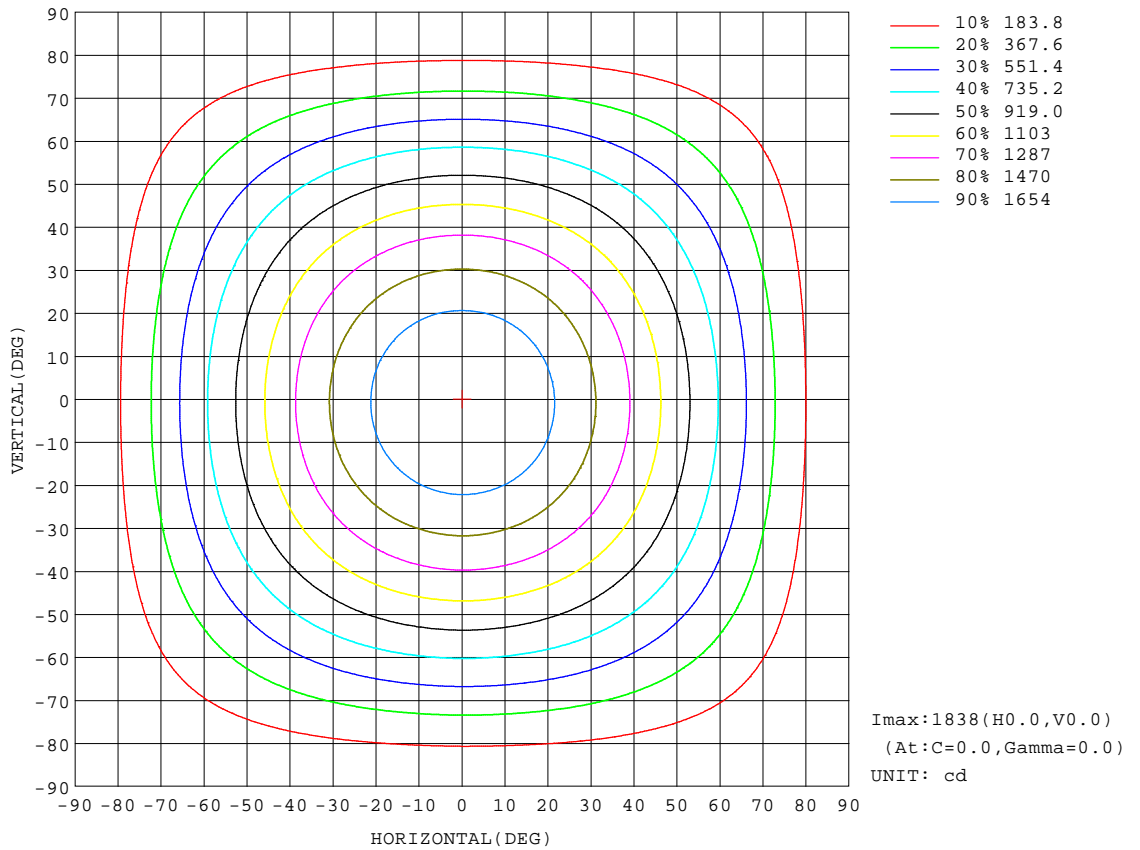
REFLECTANCE										
Ceiling	0.8	0.8	0.8	0.7	0.7	0.7	0.5	0.5	0.5	0
Walls	0.7	0.5	0.3	0.7	0.5	0.3	0.7	0.5	0.3	0
Working plane	0.2	0.2	0.2	0.2	0.2	0.2	0.2	0.2	0.2	0
<b>ROOM INDEX</b>	<b>UTILIZATION FACTORS(PERCENT) <math>k(RI) \times RCR = 5</math></b>									
<b>k = 0.60</b>	58	46	40	57	46	39	56	46	39	33
<b>0.80</b>	68	56	49	67	56	49	65	55	48	41
<b>1.00</b>	76	65	58	75	65	58	72	66	57	50
<b>1.25</b>	83	73	66	82	72	65	79	70	64	57
<b>1.50</b>	88	78	71	86	77	71	83	75	70	62
<b>2.00</b>	95	86	80	93	85	79	89	83	77	69
<b>2.50</b>	99	91	85	96	89	84	92	87	82	73
<b>3.00</b>	102	95	90	100	93	89	95	90	86	77
<b>4.00</b>	106	100	96	103	98	94	99	95	91	82
<b>5.00</b>	108	104	100	106	101	98	101	97	94	84
<b>ROOM INDEX</b>	<b>UF(total)</b>									<b>Direct</b>
<b>According to DIN EN 13032-2 2004</b>			<b>Suspended</b>					<b>SHRNM = 1.25</b>		

**C Range: 0 - 360DEG**  
**C Interval: 30.0DEG**  
**Test Speed: HIGH**  
**Temperature:25.3DEG**  
**Operators:DAMIN**  
**Test Date:2022-05-04**

**γ Range: 0 - 180DEG**  
**γ Interval: 1.0DEG**  
**Test System:EVERFINE GO-2000A\_V1 SYSTEM V2.00.443**  
**Humidity:65.0%**  
**Test Distance:8.000m [K=0.7063]**  
**Remarks:**

**ISOCANDELA DIAGRAM**

Test:U:221.70V I:0.2190A P:47.200W PF:0.9680 Freq:50.00Hz		
Lamp Flux:4993.63x1 lm		
Name: NS41-φ900MM-47W	Type: LED	
MFR.: Lumega Group	DIM.: D900*70mm	
	SUR.: D900mm	



**C Range: 0 - 360DEG**  
**C Interval: 30.0DEG**  
**Test Speed: HIGH**  
**Temperature:25.3DEG**  
**Operators:DAMIN**  
**Test Date:2022-05-04**

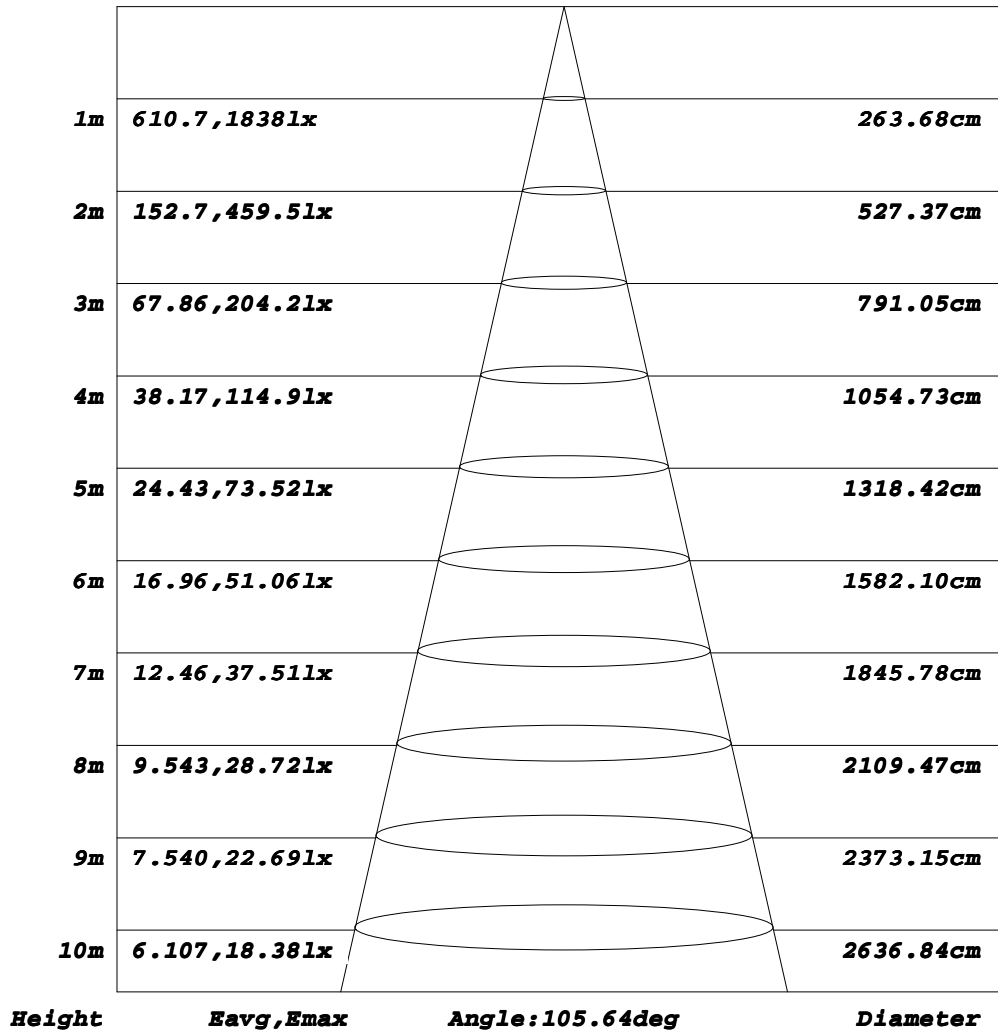
**γ Range: 0 - 180DEG**  
**γ Interval: 1.0DEG**  
**Test System:EVERFINE GO-2000A\_V1 SYSTEM V2.00.443**  
**Humidity:65.0%**  
**Test Distance:8.000m [K=0.7063]**  
**Remarks:**



**AAI Figure**

Test:U:221.70V I:0.2190A P:47.200W PF:0.9680 Freq:50.00Hz		
Lamp Flux:4993.63x1 lm		
Name: NS41-φ900MM-47W	Type: LED	
MFR.: Lumega Group	DIM.: D900*70mm	
	SUR.: D900mm	

**Flux out:3379 lm**



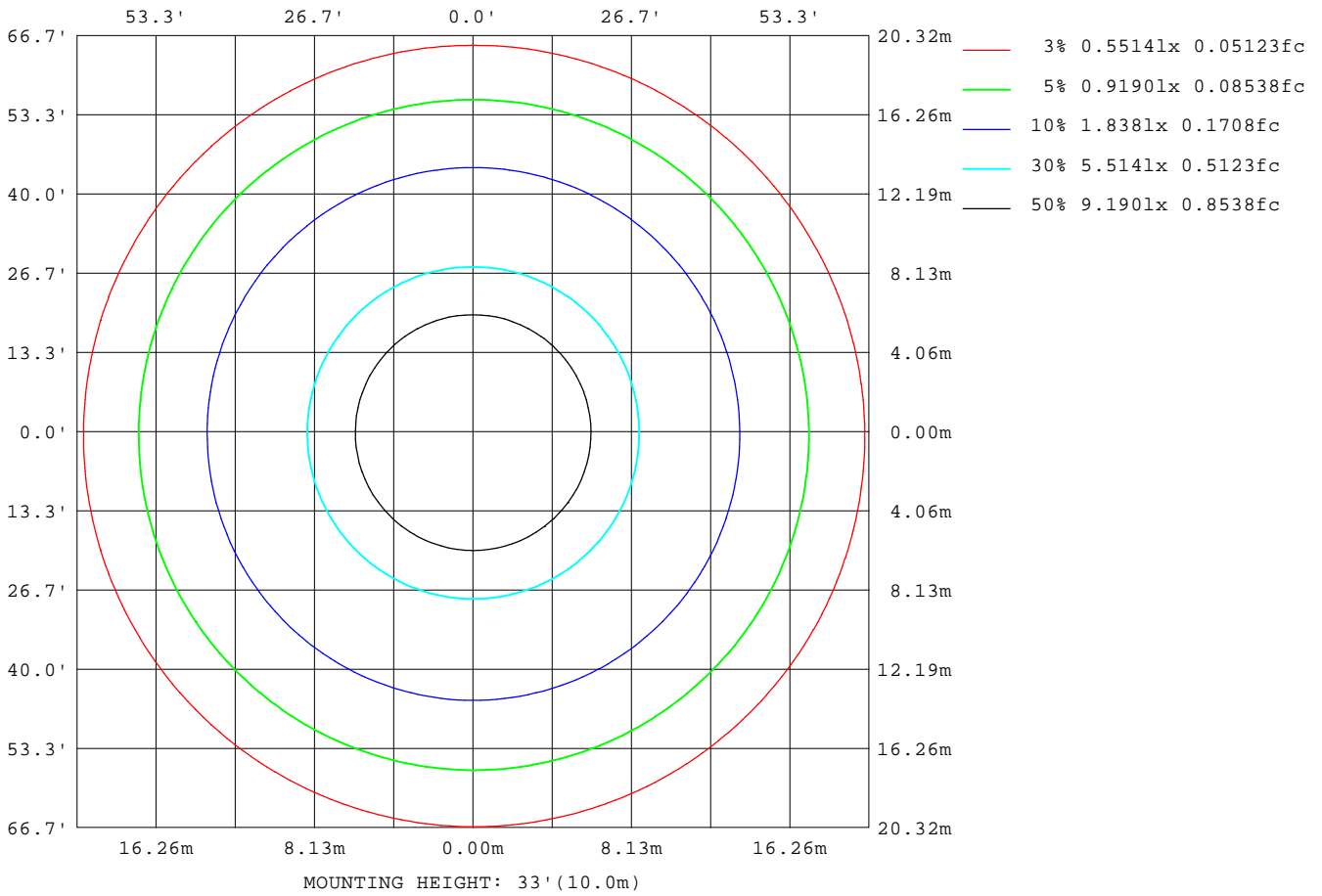
Note: The Curves indicate the illuminated area and the average illumination when the luminaire is at different distance.

**C Range: 0 - 360DEG**  
**C Interval: 30.0DEG**  
**Test Speed: HIGH**  
**Temperature: 25.3DEG**  
**Operators: DAMIN**  
**Test Date: 2022-05-04**

**γ Range: 0 - 180DEG**  
**γ Interval: 1.0DEG**  
**Test System: EVERFINE GO-2000A\_V1 SYSTEM V2.00.443**  
**Humidity: 65.0%**  
**Test Distance: 8.000m [K=0.7063]**  
**Remarks:**

**ISOLUX DIAGRAM**

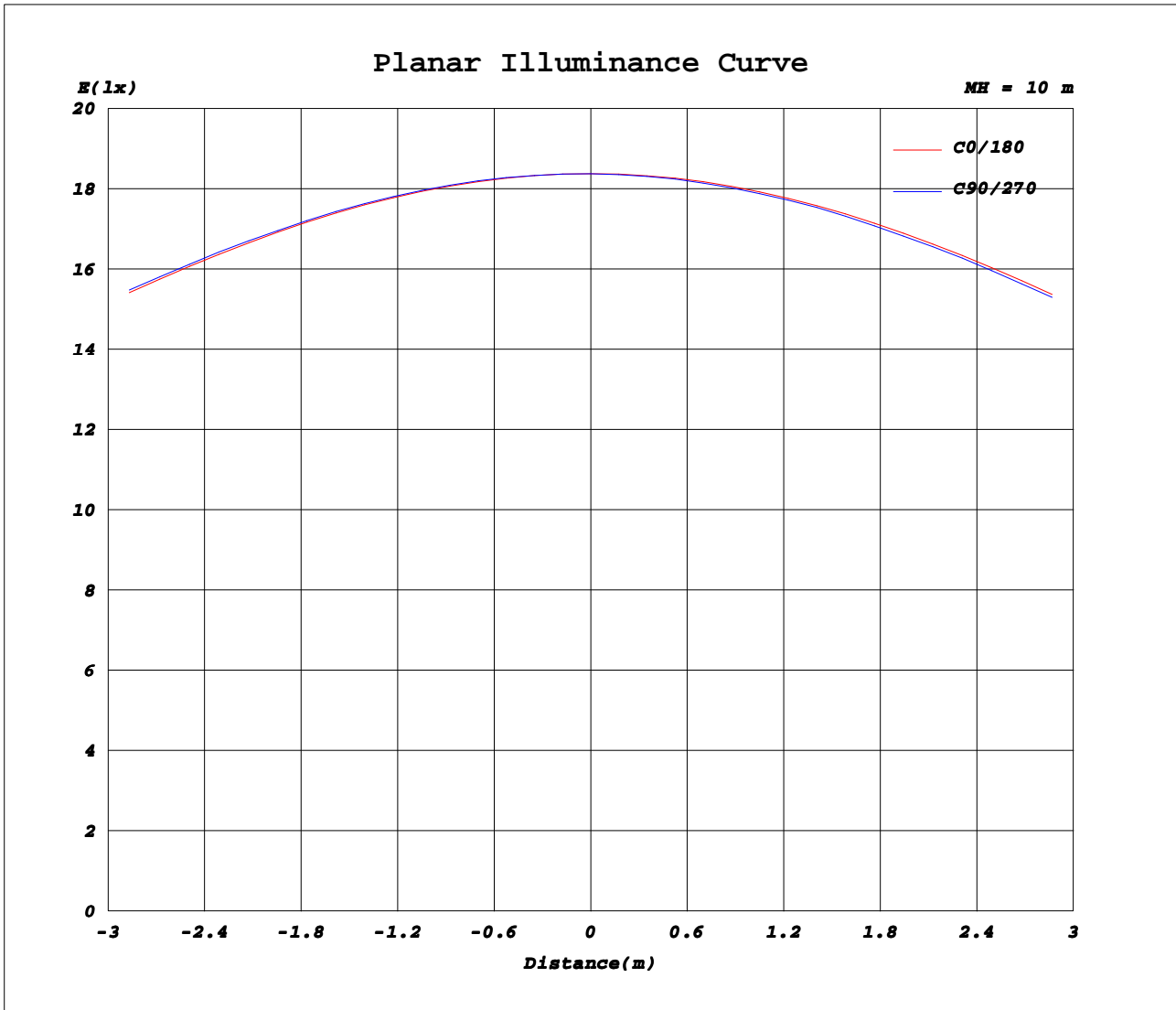
Test:U:221.70V I:0.2190A P:47.200W PF:0.9680 Freq:50.00Hz		
Lamp Flux:4993.63x1 lm		
Name: NS41-φ900MM-47W	Type: LED	
MFR.: Lumega Group	DIM.: D900*70mm	
	SUR.: D900mm	



**C Range: 0 - 360DEG**  
**C Interval: 30.0DEG**  
**Test Speed: HIGH**  
**Temperature: 25.3DEG**  
**Operators: DAMIN**  
**Test Date: 2022-05-04**

**γ Range: 0 - 180DEG**  
**γ Interval: 1.0DEG**  
**Test System: EVERFINE GO-2000A\_V1 SYSTEM V2.00.443**  
**Humidity: 65.0%**  
**Test Distance: 8.000m [K=0.7063]**  
**Remarks:**

**Planar Illuminance Curve**



**C Range: 0 - 360DEG**  
**C Interval: 30.0DEG**  
**Test Speed: HIGH**  
**Temperature: 25.3DEG**  
**Operators: DAMIN**  
**Test Date: 2022-05-04**

**γ Range: 0 - 180DEG**  
**γ Interval: 1.0DEG**  
**Test System: EVERFINE GO-2000A\_V1 SYSTEM V2.00.443**  
**Humidity: 65.0%**  
**Test Distance: 8.000m [K=0.7063]**  
**Remarks:**

**LUMINOUS DISTRIBUTION INTENSITY DATA**

Test:U:221.70V I:0.2190A P:47.200W PF:0.9680 Freq:50.00Hz Lamp Flux:4993.63x1 lm		
Name: NS41-φ900MM-47W	Type: LED	
MFR.: Lumega Group	DIM.: D900*70mm	
	SUR.: D900mm	

Table--1

UNIT: cd

C( DEG) γ (DEG)	0	30	60	90	120	150	180	210	240	270	300	330							
0	1838	1838	1837	1837	1838	1838	1838	1838	1838	1837	1837	1838							
5	1828	1829	1830	1830	1829	1828	1827	1825	1824	1823	1824	1826							
10	1798	1801	1802	1802	1801	1798	1795	1792	1789	1788	1789	1793							
15	1748	1752	1754	1754	1751	1748	1743	1739	1736	1735	1737	1741							
20	1679	1684	1687	1687	1684	1678	1673	1668	1665	1664	1666	1671							
25	1594	1601	1604	1605	1600	1594	1587	1581	1578	1576	1579	1585							
30	1495	1503	1507	1508	1503	1496	1488	1481	1477	1475	1478	1484							
35	1384	1394	1399	1399	1393	1385	1375	1368	1363	1361	1365	1372							
40	1264	1274	1280	1281	1274	1264	1254	1246	1241	1239	1243	1251							
45	1134	1146	1152	1154	1147	1137	1126	1118	1112	1109	1113	1121							
50	1002	1013	1019	1020	1014	1005	995	985	978	975	979	988							
55	864	876	882	883	875	865	853	844	838	835	840	850							
60	724	736	742	743	735	724	712	702	696	693	698	708							
65	584	596	602	603	594	583	570	561	555	553	558	568							
70	445	456	462	462	453	441	428	420	414	413	418	429							
75	310	321	327	327	318	307	295	286	280	278	283	294							
80	183	195	201	201	193	182	169	161	155	153	158	168							
85	71.6	81.2	86.2	86.3	78.8	68.7	58.1	50.6	45.8	44.5	49.0	58.0							
90	9.05	8.92	9.00	9.30	10.00	10.8	11.5	11.8	11.9	11.7	11.1	10.2							
95	9.31	8.89	8.85	9.19	10.2	11.4	12.5	12.9	13.0	12.7	11.9	10.8							
100	10.6	10.1	10.1	10.4	11.4	12.6	13.7	14.0	14.1	13.7	13.0	12.0							
105	11.9	11.5	11.5	11.8	12.8	13.9	14.9	15.3	15.3	14.9	14.3	13.2							
110	13.3	13.0	13.0	13.3	14.2	15.3	16.2	16.6	16.6	16.3	15.7	14.7							
115	14.9	14.6	14.7	15.0	15.9	16.9	17.7	18.1	18.2	17.9	17.2	16.2							
120	16.6	16.4	16.5	16.8	17.6	18.6	19.4	19.8	19.9	19.6	19.0	18.0							
125	18.3	18.1	18.2	18.6	19.4	20.2	21.0	21.4	21.5	21.3	20.7	19.7							
130	20.0	19.9	20.0	20.4	21.1	21.9	22.6	23.0	23.1	23.0	22.3	21.4							
135	21.7	21.7	21.9	22.2	22.8	23.5	24.1	24.6	24.7	24.6	24.0	23.1							
140	23.5	23.5	23.6	23.9	24.6	25.2	25.8	26.2	26.4	26.3	25.7	24.8							
145	25.4	25.3	25.4	25.7	26.3	26.9	27.5	27.9	28.0	27.9	27.4	26.5							
150	27.1	26.9	27.0	27.3	27.9	28.5	29.1	29.4	29.5	29.3	28.9	28.1							
155	28.9	28.7	28.8	29.0	29.5	30.1	30.6	30.8	30.8	30.6	30.2	29.6							
160	30.9	30.7	30.6	30.8	31.3	31.8	32.3	32.3	32.2	32.0	31.7	31.3							
165	32.8	32.5	32.4	32.5	32.9	33.3	33.7	33.6	33.5	33.2	33.1	33.0							
170	34.6	34.2	34.0	34.0	34.3	34.6	34.9	34.8	34.5	34.3	34.3	34.4							
175	35.9	35.5	35.2	35.1	35.3	35.6	35.8	35.5	35.2	34.9	35.1	35.4							
180	36.2	35.7	35.5	35.4	35.6	35.9	36.2	35.9	35.6	35.4	35.4	35.7							

**C Range: 0 - 360DEG**  
**C Interval: 30.0DEG**  
**Test Speed: HIGH**  
**Temperature: 25.3DEG**  
**Operators: DAMIN**  
**Test Date: 2022-05-04**

**γ Range: 0 - 180DEG**  
**γ Interval: 1.0DEG**  
**Test System: EVERFINE GO-2000A\_V1 SYSTEM V2.00.443**  
**Humidity: 65.0%**  
**Test Distance: 8.000m [K=0.7063]**  
**Remarks:**