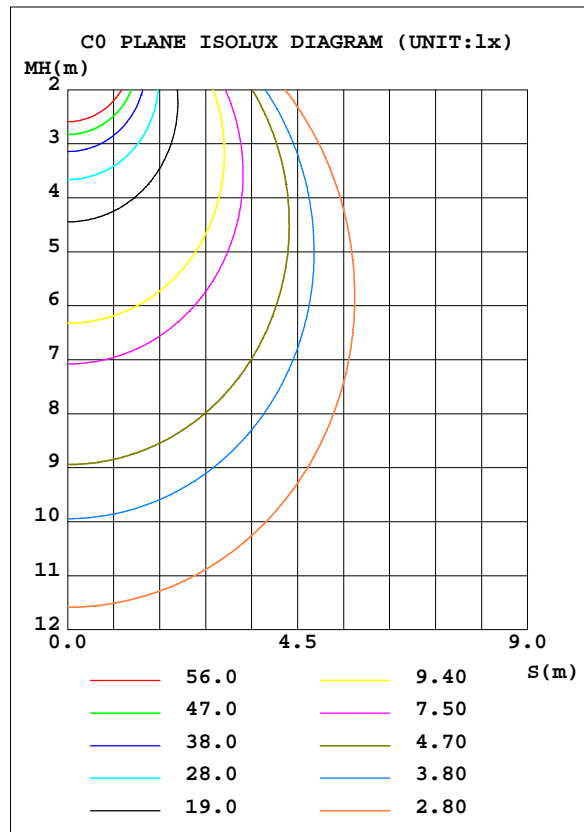
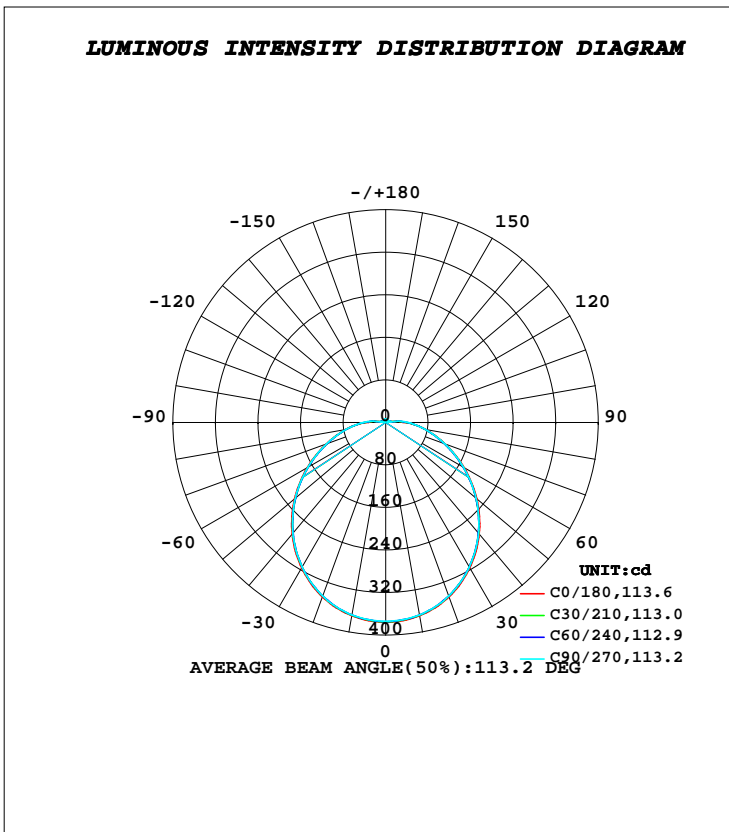


**LUMINAIRE PHOTOMETRIC TEST REPORT**

Test:U:221.70V I:0.0480A P:10.200W PF:0.9580 Freq:50.00Hz		
Lamp Flux:1203.22x1 lm		
Name: NS44-φ145MM-10W(ROUND)	Type: LED	
MFR.: Lumega Group	DIM.: D145*H50mm	
	SUR.: D110mm	

DATA OF LAMP		PHOTOMETRIC DATA Eff: 117.96 lm/W			
MODEL		I <sub>max</sub> (cd)	375.7	S/MH(C0/180)	1.25
NOMINAL POWER(W)	10	LOR(%)	100.0	S/MH(C90/270)	1.25
RATED VOLTAGE(V)	220	TOTAL FLUX(lm)	1203.2	η UP, DN(C0-180)	2.4, 47.6
NOMINAL FLUX(lm)	1203.22	CIE CLASS	DIRECT	η UP, DN(C180-360)	2.4, 47.6
LAMPS INSIDE	1	η up(%)	4.8	CIBSE SHR NOM	1.25
TEST VOLTAGE(V)	221.6	η down(%)	95.2	CIBSE SHR MAX	1.35



**C Range: 0 - 360DEG**  
**C Interval: 30.0DEG**  
**Test Speed: HIGH**  
**Temperature:25.3DEG**  
**Operators:DAMIN**  
**Test Date:2022-05-12**

**γ Range: 0 - 180DEG**  
**γ Interval: 1.0DEG**  
**Test System:EVERFINE GO-2000A\_V1 SYSTEM V2.00.443**  
**Humidity:65.0%**  
**Test Distance:8.000m [K=0.7063]**  
**Remarks:**

**ZONAL FLUX DIAGRAM**

**ZONAL FLUX DIAGRAM:**

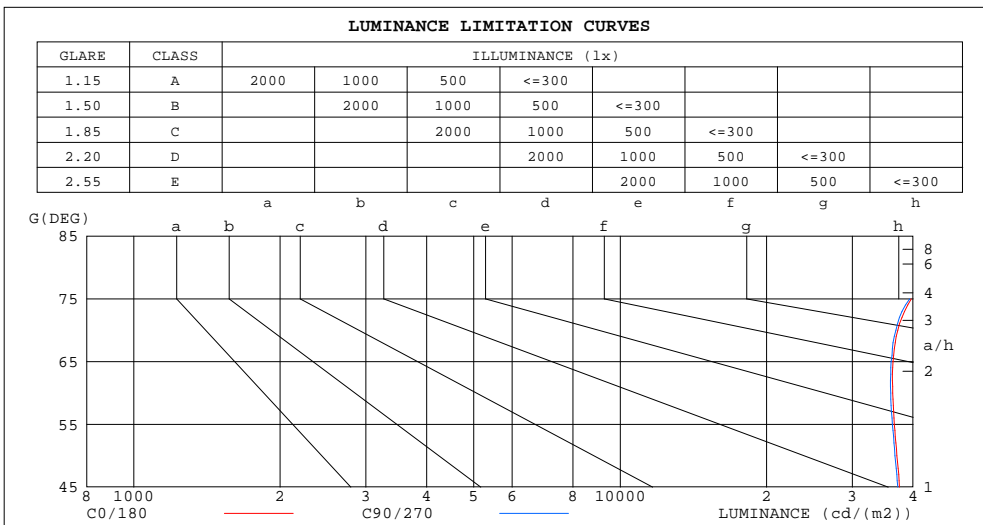
$\gamma$	C0	C45	C90	C135	C180	C225	C270	C315	$\gamma$	$\Phi$ zone	$\Phi$ total	%lum,lamp
10	369.0	367.7	367.4	367.7	369.0	367.7	367.4	367.7	0- 10	35.44	35.44	2.95,2.95
20	348.9	347.3	347.2	347.3	348.9	347.3	347.2	347.3	10- 20	101.4	136.9	11.4,11.4
30	316.1	314.2	314.4	314.2	316.1	314.2	314.4	314.2	20- 30	153.2	290.1	24.1,24.1
40	273.8	271.5	271.6	271.5	273.8	271.5	271.6	271.5	30- 40	184.1	474.2	39.4,39.4
50	224.0	221.6	222.0	221.6	224.0	221.6	222.0	221.6	40- 50	191.1	665.2	55.3,55.3
60	170.8	168.6	169.1	168.6	170.8	168.6	169.1	168.6	50- 60	175.0	840.2	69.8,69.8
70	119.6	118.0	118.6	118.0	119.6	118.0	118.6	118.0	60- 70	141.9	982.2	81.6,81.6
80	75.79	74.64	75.21	74.64	75.79	74.64	75.21	74.64	70- 80	101.2	1083	90,90
90	35.88	39.35	42.17	39.35	35.88	39.35	42.17	39.35	80- 90	62.01	1145	95.2,95.2
100	9.686	7.938	6.330	7.938	9.686	7.938	6.330	7.938	90-100	27.31	1173	97.5,97.5
110	9.967	7.905	6.746	7.905	9.967	7.905	6.746	7.905	100-110	7.468	1180	98.1,98.1
120	5.306	4.718	4.342	4.718	5.306	4.718	4.342	4.718	110-120	5.889	1186	98.6,98.6
130	5.151	5.035	4.910	5.035	5.151	5.035	4.910	5.035	120-130	4.323	1190	98.9,98.9
140	5.562	5.510	5.437	5.510	5.562	5.510	5.437	5.510	130-140	4.083	1194	99.3,99.3
150	5.871	5.862	5.823	5.862	5.871	5.862	5.823	5.862	140-150	3.566	1198	99.6,99.6
160	6.159	6.199	6.202	6.199	6.159	6.199	6.202	6.199	150-160	2.788	1201	99.8,99.8
170	6.430	6.441	6.434	6.441	6.430	6.441	6.434	6.441	160-170	1.789	1203	99.9,99.9
180	6.625	6.602	6.587	6.602	6.625	6.602	6.587	6.602	170-180	0.6216	1203	100,100
DEG	LUMINOUS INTENSITY:cd									UNIT:lm		

**C Range: 0 - 360DEG**  
**C Interval: 30.0DEG**  
**Test Speed: HIGH**  
**Temperature:25.3DEG**  
**Operators:DAMIN**  
**Test Date:2022-05-12**

**$\gamma$  Range: 0 - 180DEG**  
 **$\gamma$  Interval: 1.0DEG**  
**Test System:EVERFINE GO-2000A\_V1 SYSTEM V2.00.443**  
**Humidity:65.0%**  
**Test Distance:8.000m [K=0.7063]**  
**Remarks:**

**LUMINANCE LIMITATION CURVES**

Test:U:221.70V I:0.0480A P:10.200W PF:0.9580 Freq:50.00Hz		
Lamp Flux:1203.22x1 lm		
Name: NS44-φ145MM-10W(ROUND)	Type: LED	
MFR.: Lumega Group	DIM.: D145*H50mm	
	SUR.: D110mm	



LUMINANCE cd/(m2)		
G(DEG)	C0/180	C90/270
85	69925	69915
80	46429	46077
75	39674	39359
70	37204	36903
65	36395	36081
60	36334	35985
55	36618	36300
50	37067	36734
45	37514	37221

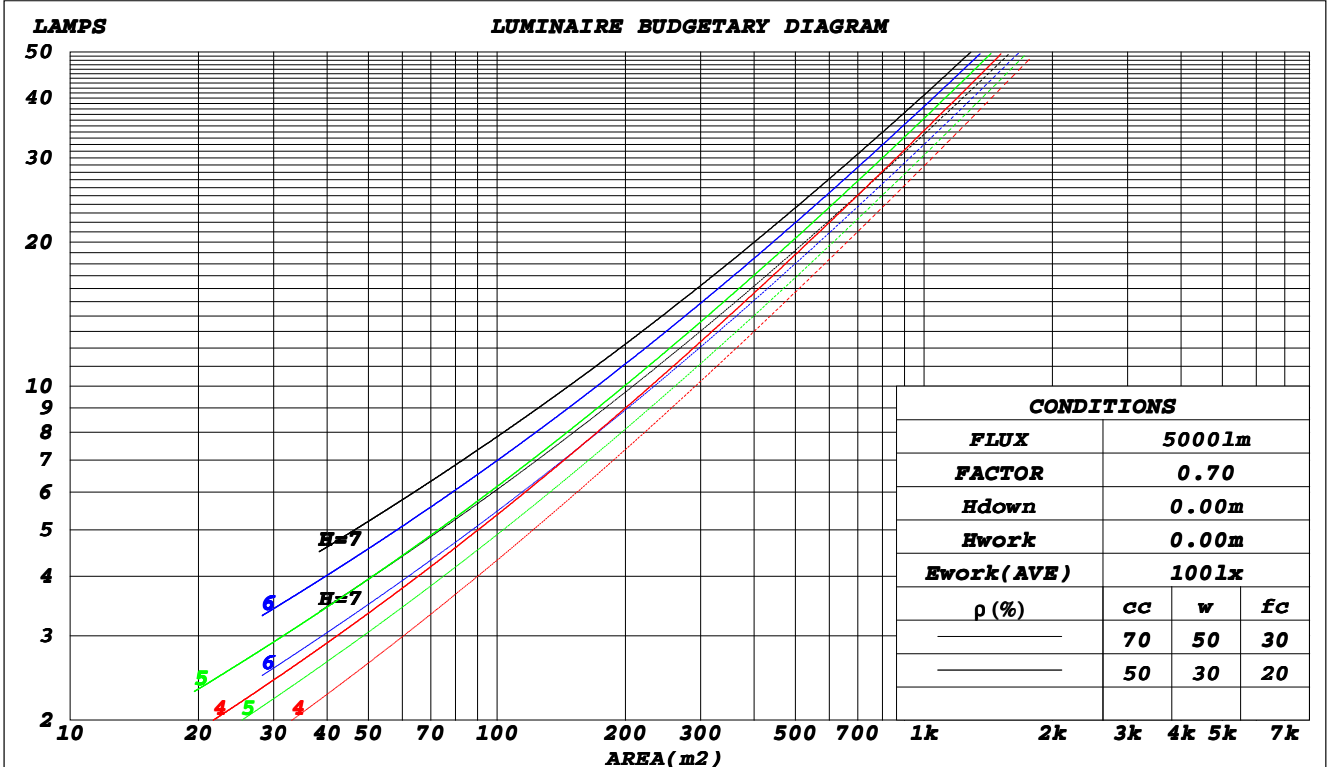
**C Range: 0 - 360DEG**  
**C Interval: 30.0DEG**  
**Test Speed: HIGH**  
**Temperature: 25.3DEG**  
**Operators: DAMIN**  
**Test Date: 2022-05-12**

**γ Range: 0 - 180DEG**  
**γ Interval: 1.0DEG**  
**Test System: EVERFINE GO-2000A\_V1 SYSTEM V2.00.443**  
**Humidity: 65.0%**  
**Test Distance: 8.000m [K=0.7063]**  
**Remarks:**

**CU AND LUMINAIRE BUDGETARY ESTIMATE DIAGRAM**

Test:U:221.70V I:0.0480A P:10.200W PF:0.9580 Freq:50.00Hz		
Lamp Flux:1203.22x1 lm		
Name: NS44-φ145MM-10W(ROUND)	Type: LED	
MFR.: Lumega Group	DIM.: D145*H50mm	
	SUR.: D110mm	

ρcc	80%			70%			50%			30%			10%			0
ρw	50%	30%	10%	50%	30%	10%	50%	30%	10%	50%	30%	10%	50%	30%	10%	0
ρfc	20%			20%			20%			20%			20%			0
<b>RCR</b>	<b>RCR:Room Cavity Ratio</b>						<b>Coefficients of Utilization(CU)</b>									
0.0	1.18	1.18	1.18	1.15	1.15	1.15	1.08	1.08	1.08	1.03	1.03	1.03	.98	.98	.98	.95
1.0	1.01	.96	.91	.98	.93	.89	.93	.89	.86	.88	.85	.82	.83	.81	.79	.76
2.0	.87	.80	.73	.85	.78	.72	.80	.75	.70	.76	.71	.67	.72	.69	.65	.63
3.0	.76	.67	.60	.74	.66	.60	.70	.64	.58	.67	.61	.56	.64	.59	.55	.52
4.0	.67	.58	.51	.65	.57	.50	.62	.55	.49	.59	.53	.48	.57	.51	.47	.44
5.0	.60	.51	.44	.58	.50	.43	.56	.48	.42	.53	.47	.41	.51	.45	.41	.38
6.0	.54	.45	.38	.53	.44	.38	.50	.43	.37	.48	.41	.36	.46	.40	.36	.33
7.0	.49	.40	.34	.48	.39	.33	.46	.38	.33	.44	.37	.32	.42	.36	.32	.29
8.0	.44	.36	.30	.44	.35	.30	.42	.34	.29	.40	.34	.29	.39	.33	.28	.26
9.0	.41	.32	.27	.40	.32	.27	.38	.31	.26	.37	.31	.26	.36	.30	.25	.24
10.0	.38	.30	.24	.37	.29	.24	.36	.29	.24	.34	.28	.23	.33	.27	.23	.21



C Range: 0 - 360DEG  
 C Interval: 30.0DEG  
 Test Speed: HIGH  
 Temperature: 25.3DEG  
 Operators: DAMIN  
 Test Date: 2022-05-12

γ Range: 0 - 180DEG  
 γ Interval: 1.0DEG  
 Test System: EVERFINE GO-2000A\_V1 SYSTEM V2.00.443  
 Humidity: 65.0%  
 Test Distance: 8.000m [K=0.7063]  
 Remarks:

**WEC AND CCEC**

Test:U:221.70V I:0.0480A P:10.200W PF:0.9580 Freq:50.00Hz		
Lamp Flux:1203.22x1 lm		
Name: NS44-φ145MM-10W(ROUND)	Type: LED	
MFR.: Lumega Group	DIM.: D145*H50mm	
	SUR.: D110mm	

ρ <sub>cc</sub>	80%			70%			50%			30%			10%			0
ρ <sub>w</sub>	50%	30%	10%	50%	30%	10%	50%	30%	10%	50%	30%	10%	50%	30%	10%	0
ρ <sub>fc</sub>	20%			20%			20%			20%			20%			0
<b>RCR</b>	<b>RCR:Room Cavity Ratio</b>						<b>Wall Exitance Coefficients(WEC)</b>									
0.0																
1.0	.351	.199	.063	.342	.195	.062	.326	.187	.060	.311	.179	.058	.297	.172	.056	
2.0	.314	.172	.053	.306	.169	.052	.292	.162	.050	.279	.156	.049	.266	.151	.047	
3.0	.284	.151	.045	.277	.148	.045	.264	.143	.044	.252	.138	.042	.241	.134	.041	
4.0	.258	.134	.039	.252	.132	.039	.241	.128	.038	.230	.124	.037	.220	.120	.036	
5.0	.237	.121	.035	.231	.119	.035	.221	.115	.034	.211	.112	.033	.202	.108	.033	
6.0	.218	.109	.031	.213	.108	.031	.204	.105	.030	.195	.102	.030	.187	.099	.029	
7.0	.202	.100	.028	.198	.099	.028	.189	.096	.028	.182	.093	.027	.174	.091	.027	
8.0	.188	.092	.026	.184	.091	.026	.177	.088	.025	.170	.086	.025	.163	.084	.024	
9.0	.176	.085	.024	.172	.084	.024	.165	.082	.023	.159	.080	.023	.153	.078	.022	
10.0	.165	.079	.022	.162	.078	.022	.156	.076	.021	.150	.074	.021	.144	.072	.021	

ρ <sub>cc</sub>	80%			70%			50%			30%			10%			0
ρ <sub>w</sub>	50%	30%	10%	50%	30%	10%	50%	30%	10%	50%	30%	10%	50%	30%	10%	0
ρ <sub>fc</sub>	20%			20%			20%			20%			20%			0
<b>RCR</b>	<b>RCR:Room Cavity Ratio</b>						<b>Ceiling Cavity Exitance Coefficients(CCEC)</b>									
0.0	.227	.227	.227	.194	.194	.194	.132	.132	.132	.076	.076	.076	.024	.024	.024	
1.0	.220	.193	.168	.188	.165	.145	.129	.114	.100	.074	.066	.058	.024	.021	.019	
2.0	.212	.169	.132	.182	.145	.115	.125	.101	.080	.072	.059	.047	.023	.019	.015	
3.0	.205	.152	.110	.175	.131	.095	.120	.091	.067	.070	.053	.039	.022	.017	.013	
4.0	.197	.139	.094	.169	.120	.082	.116	.084	.058	.067	.049	.034	.022	.016	.011	
5.0	.189	.129	.084	.162	.111	.073	.112	.078	.052	.065	.046	.031	.021	.015	.010	
6.0	.182	.120	.076	.156	.104	.066	.108	.073	.047	.062	.043	.028	.020	.014	.009	
7.0	.175	.113	.071	.150	.098	.062	.104	.069	.044	.060	.041	.026	.019	.013	.009	
8.0	.168	.108	.066	.145	.093	.058	.100	.066	.041	.058	.039	.024	.019	.013	.008	
9.0	.162	.103	.063	.139	.089	.055	.097	.063	.039	.056	.037	.023	.018	.012	.008	
10.0	.156	.099	.060	.134	.086	.053	.093	.060	.037	.054	.036	.022	.018	.012	.007	

**C Range: 0 - 360DEG**  
**C Interval: 30.0DEG**  
**Test Speed: HIGH**  
**Temperature:25.3DEG**  
**Operators:DAMIN**  
**Test Date:2022-05-12**

**γ Range: 0 - 180DEG**  
**γ Interval: 1.0DEG**  
**Test System:EVERFINE GO-2000A\_V1 SYSTEM V2.00.443**  
**Humidity:65.0%**  
**Test Distance:8.000m [K=0.7063]**  
**Remarks:**

**UGR(Unified Glare Rating) Table**

Test:U:221.70V I:0.0480A P:10.200W PF:0.9580 Freq:50.00Hz		
Lamp Flux:1203.22x1 lm		
Name: NS44-φ145MM-10W(ROUND)	Type: LED	
MFR.: Lumega Group	DIM.: D145*H50mm	
	SUR.: D110mm	

ceiling/cavity	0.7	0.7	0.5	0.5	0.3	0.7	0.7	0.5	0.5	0.3
walls	0.5	0.3	0.5	0.3	0.3	0.5	0.3	0.5	0.3	0.3
working plane	0.2	0.2	0.2	0.2	0.2	0.2	0.2	0.2	0.2	0.2
Room dimensions	Viewed crosswise					Viewed endwise				
<b>x = 2H y = 2H</b>	<b>25.0</b>	<b>26.5</b>	<b>25.3</b>	<b>26.8</b>	<b>27.1</b>	<b>24.9</b>	<b>26.4</b>	<b>25.3</b>	<b>26.7</b>	<b>27.0</b>
3H	26.8	28.1	27.1	28.5	28.8	26.7	28.1	27.1	28.4	28.8
4H	27.6	29.0	28.0	29.3	29.7	27.6	28.9	28.0	29.3	29.6
6H	28.5	29.8	28.9	30.2	30.5	28.5	29.7	28.9	30.1	30.5
8H	29.0	30.2	29.4	30.6	31.0	29.0	30.2	29.4	30.5	30.9
12H	29.5	30.7	30.0	31.1	31.5	29.5	30.6	29.9	31.0	31.4
<b>4H 2H</b>	<b>25.6</b>	<b>26.9</b>	<b>26.0</b>	<b>27.3</b>	<b>27.6</b>	<b>25.6</b>	<b>26.9</b>	<b>26.0</b>	<b>27.2</b>	<b>27.6</b>
3H	27.6	28.8	28.0	29.2	29.6	27.6	28.8	28.0	29.1	29.5
4H	28.7	29.7	29.1	30.1	30.6	28.6	29.7	29.1	30.1	30.6
6H	29.7	30.7	30.2	31.1	31.6	29.7	30.7	30.2	31.1	31.6
8H	30.3	31.2	30.8	31.7	32.2	30.3	31.2	30.8	31.6	32.1
12H	30.9	31.8	31.4	32.2	32.8	30.9	31.7	31.4	32.2	32.7
<b>8H 4H</b>	<b>29.1</b>	<b>30.0</b>	<b>29.6</b>	<b>30.4</b>	<b>30.9</b>	<b>29.0</b>	<b>29.9</b>	<b>29.5</b>	<b>30.4</b>	<b>30.9</b>
6H	30.4	31.2	30.9	31.6	32.2	30.4	31.1	30.9	31.6	32.1
8H	31.1	31.8	31.7	32.3	32.9	31.1	31.8	31.6	32.3	32.8
12H	32.0	32.6	32.5	33.1	33.7	31.9	32.5	32.5	33.1	33.6
<b>12H 4H</b>	<b>29.1</b>	<b>30.0</b>	<b>29.6</b>	<b>30.4</b>	<b>31.0</b>	<b>29.1</b>	<b>29.9</b>	<b>29.6</b>	<b>30.4</b>	<b>30.9</b>
6H	30.6	31.2	31.1	31.7	32.3	30.5	31.2	31.1	31.7	32.3
8H	31.4	32.0	31.9	32.5	33.1	31.4	31.9	31.9	32.5	33.1
<b>Variations with the observer position at spacings(CIE Pub.117):</b>										
<b>S = 1.0H</b>	<b>+ 0.1 / - 0.1</b>					<b>+ 0.1 / - 0.2</b>				
<b>1.5H</b>	<b>+ 0.2 / - 0.3</b>					<b>+ 0.2 / - 0.3</b>				
<b>2.0H</b>	<b>+ 0.1 / - 0.3</b>					<b>+ 0.1 / - 0.3</b>				

CIE Pub.117, 1203 lm Total Lamp Luminous Flux Corrected ( $8\log(F/F_0) = 0.6$ )  
 Area: 0.0094 m<sup>2</sup>

**C Range: 0 - 360DEG**  
**C Interval: 30.0DEG**  
**Test Speed: HIGH**  
**Temperature:25.3DEG**  
**Operators:DAMIN**  
**Test Date:2022-05-12**

**γ Range: 0 - 180DEG**  
**γ Interval: 1.0DEG**  
**Test System:EVERFINE GO-2000A\_V1 SYSTEM V2.00.443**  
**Humidity:65.0%**  
**Test Distance:8.000m [K=0.7063]**  
**Remarks:**

**UTILIZATION FACTORS TABLE**

Test:U:221.70V I:0.0480A P:10.200W PF:0.9580 Freq:50.00Hz		
Lamp Flux:1203.22x1 lm		
Name: NS44-φ145MM-10W(ROUND)	Type: LED	
MFR.: Lumega Group	DIM.: D145*H50mm	
	SUR.: D110mm	

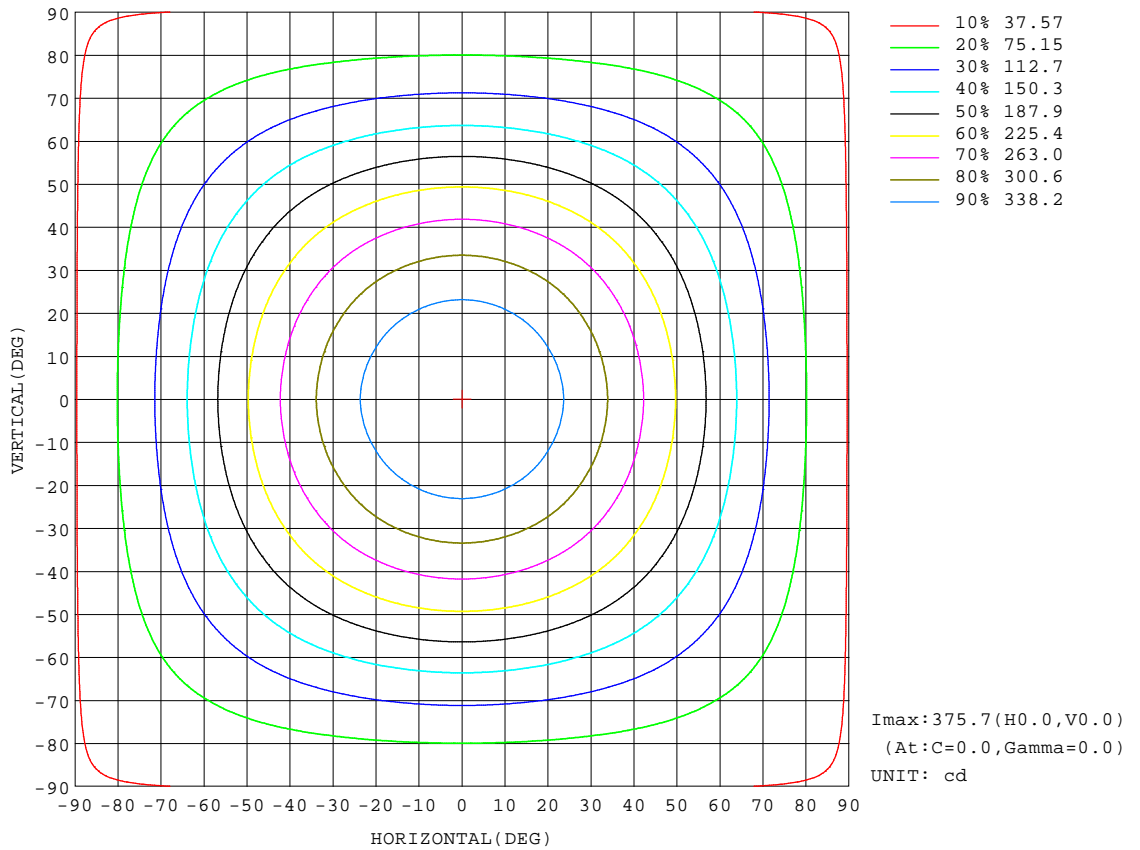
REFLECTANCE										
Ceiling	0.8	0.8	0.8	0.7	0.7	0.7	0.5	0.5	0.5	0
Walls	0.7	0.5	0.3	0.7	0.5	0.3	0.7	0.5	0.3	0
Working plane	0.2	0.2	0.2	0.2	0.2	0.2	0.2	0.2	0.2	0
<b>ROOM INDEX</b>	<b>UTILIZATION FACTORS(PERCENT) <math>k(RI) \times RCR = 5</math></b>									
<b>k = 0.60</b>	54	43	35	54	42	35	52	42	35	29
<b>0.80</b>	64	52	44	63	51	44	61	50	44	36
<b>1.00</b>	72	60	53	71	60	52	68	61	52	44
<b>1.25</b>	79	68	60	77	67	60	74	65	59	50
<b>1.50</b>	84	73	66	82	72	65	79	70	64	55
<b>2.00</b>	91	81	74	89	80	73	85	77	71	62
<b>2.50</b>	95	86	79	93	85	78	88	81	76	66
<b>3.00</b>	99	91	84	96	89	83	91	85	80	70
<b>4.00</b>	103	96	91	100	94	89	95	90	86	75
<b>5.00</b>	105	100	95	103	97	93	97	93	89	78
<b>ROOM INDEX</b>	<b>UF(total)</b>									<b>Direct</b>
<b>According to DIN EN 13032-2 2004</b>			<b>Suspended</b>					<b>SHRNOM = 1.25</b>		

**C Range: 0 - 360DEG**  
**C Interval: 30.0DEG**  
**Test Speed: HIGH**  
**Temperature:25.3DEG**  
**Operators:DAMIN**  
**Test Date:2022-05-12**

**γ Range: 0 - 180DEG**  
**γ Interval: 1.0DEG**  
**Test System:EVERFINE GO-2000A\_V1 SYSTEM V2.00.443**  
**Humidity:65.0%**  
**Test Distance:8.000m [K=0.7063]**  
**Remarks:**

**ISOCANDELA DIAGRAM**

Test:U:221.70V I:0.0480A P:10.200W PF:0.9580 Freq:50.00Hz		
Lamp Flux:1203.22x1 lm		
Name: NS44-φ145MM-10W(ROUND)	Type: LED	
MFR.: Lumega Group	DIM.: D145*H50mm	
	SUR.: D110mm	



**C Range: 0 - 360DEG**  
**C Interval: 30.0DEG**  
**Test Speed: HIGH**  
**Temperature: 25.3DEG**  
**Operators: DAMIN**  
**Test Date: 2022-05-12**

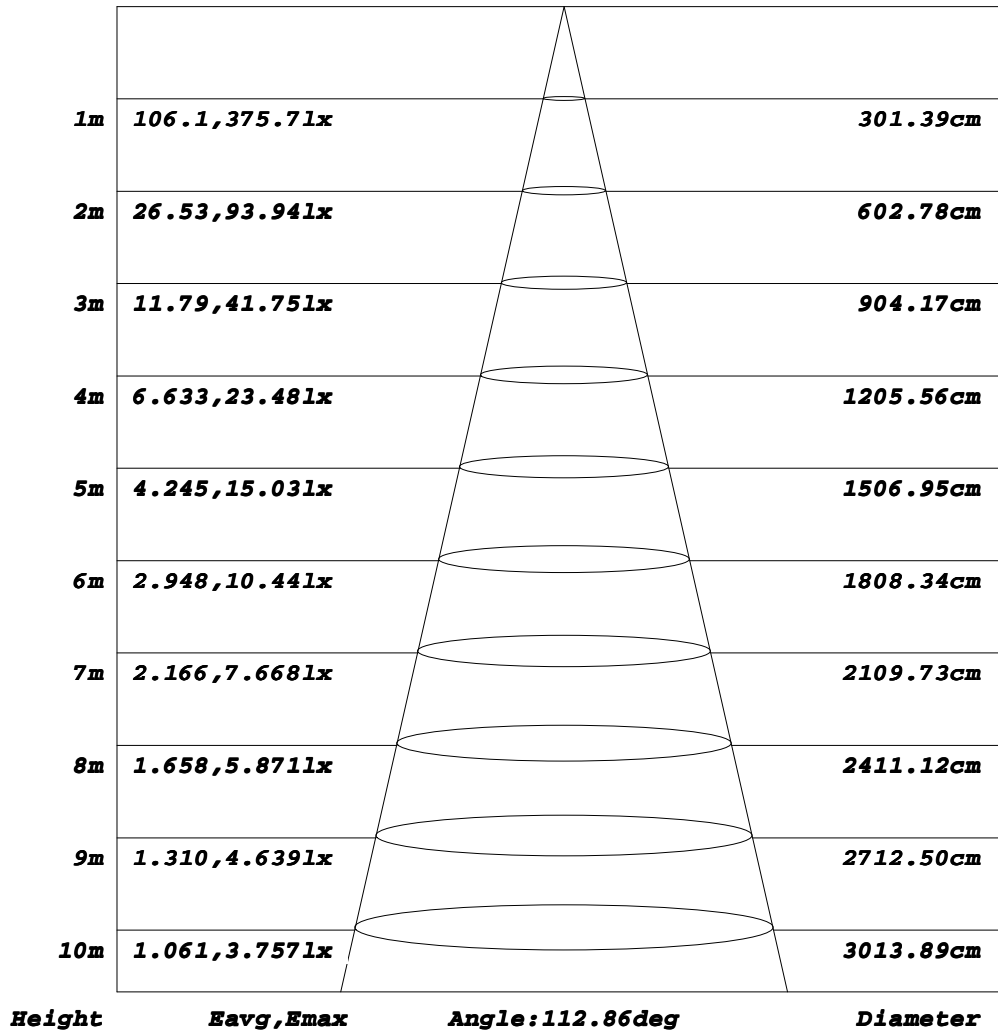
**γ Range: 0 - 180DEG**  
**γ Interval: 1.0DEG**  
**Test System: EVERFINE GO-2000A\_V1 SYSTEM V2.00.443**  
**Humidity: 65.0%**  
**Test Distance: 8.000m [K=0.7063]**  
**Remarks:**



**AAI Figure**

Test:U:221.70V I:0.0480A P:10.200W PF:0.9580 Freq:50.00Hz		
Lamp Flux:1203.22x1 lm		
Name: NS44-φ145MM-10W(ROUND)	Type: LED	
MFR.: Lumega Group	DIM.: D145*H50mm	
	SUR.: D110mm	

**Flux out:790.6 lm**



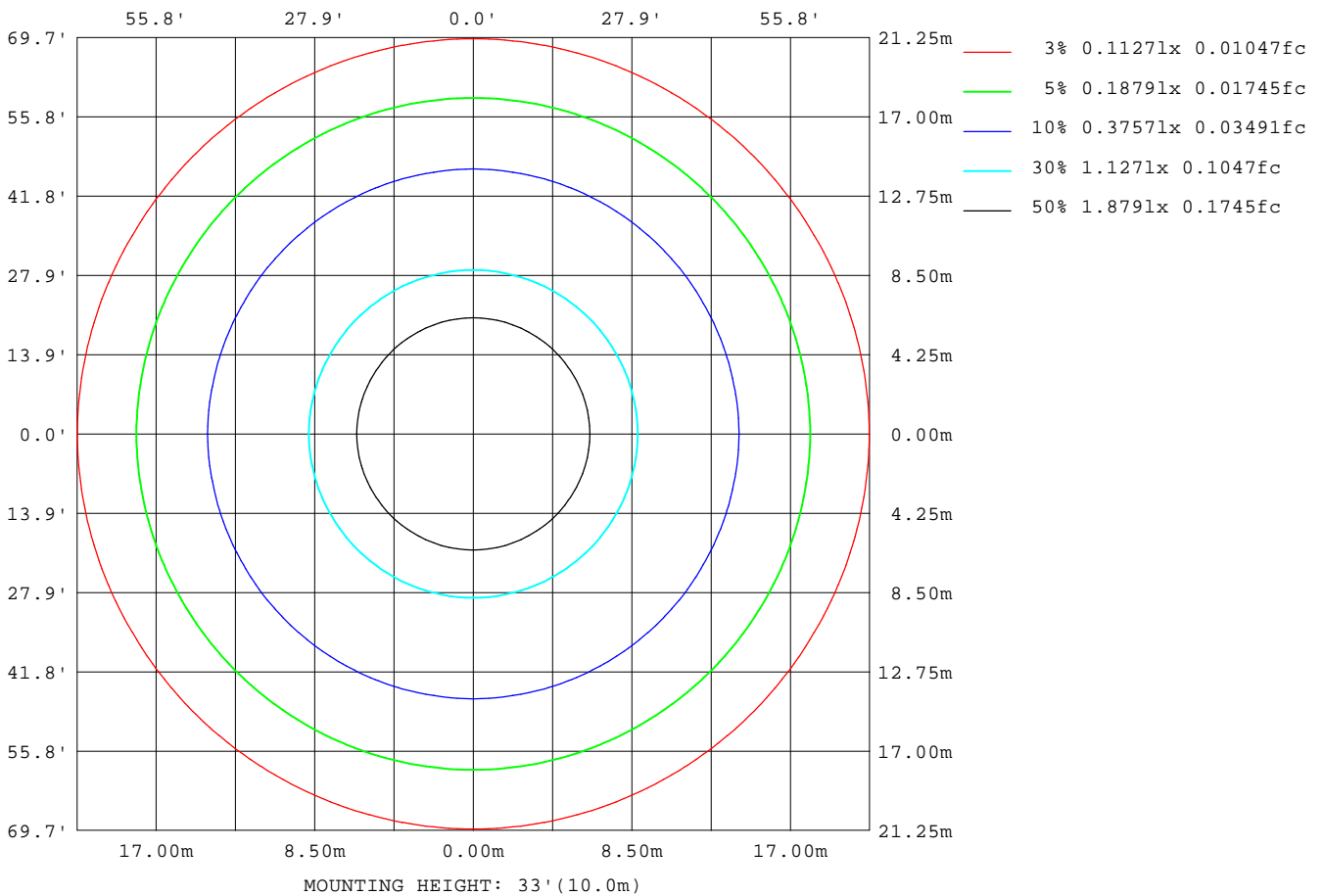
Note: The Curves indicate the illuminated area and the average illumination when the luminaire is at different distance.

**C Range: 0 - 360DEG**  
**C Interval: 30.0DEG**  
**Test Speed: HIGH**  
**Temperature: 25.3DEG**  
**Operators: DAMIN**  
**Test Date: 2022-05-12**

**γ Range: 0 - 180DEG**  
**γ Interval: 1.0DEG**  
**Test System: EVERFINE GO-2000A\_V1 SYSTEM V2.00.443**  
**Humidity: 65.0%**  
**Test Distance: 8.000m [K=0.7063]**  
**Remarks:**

**ISOLUX DIAGRAM**

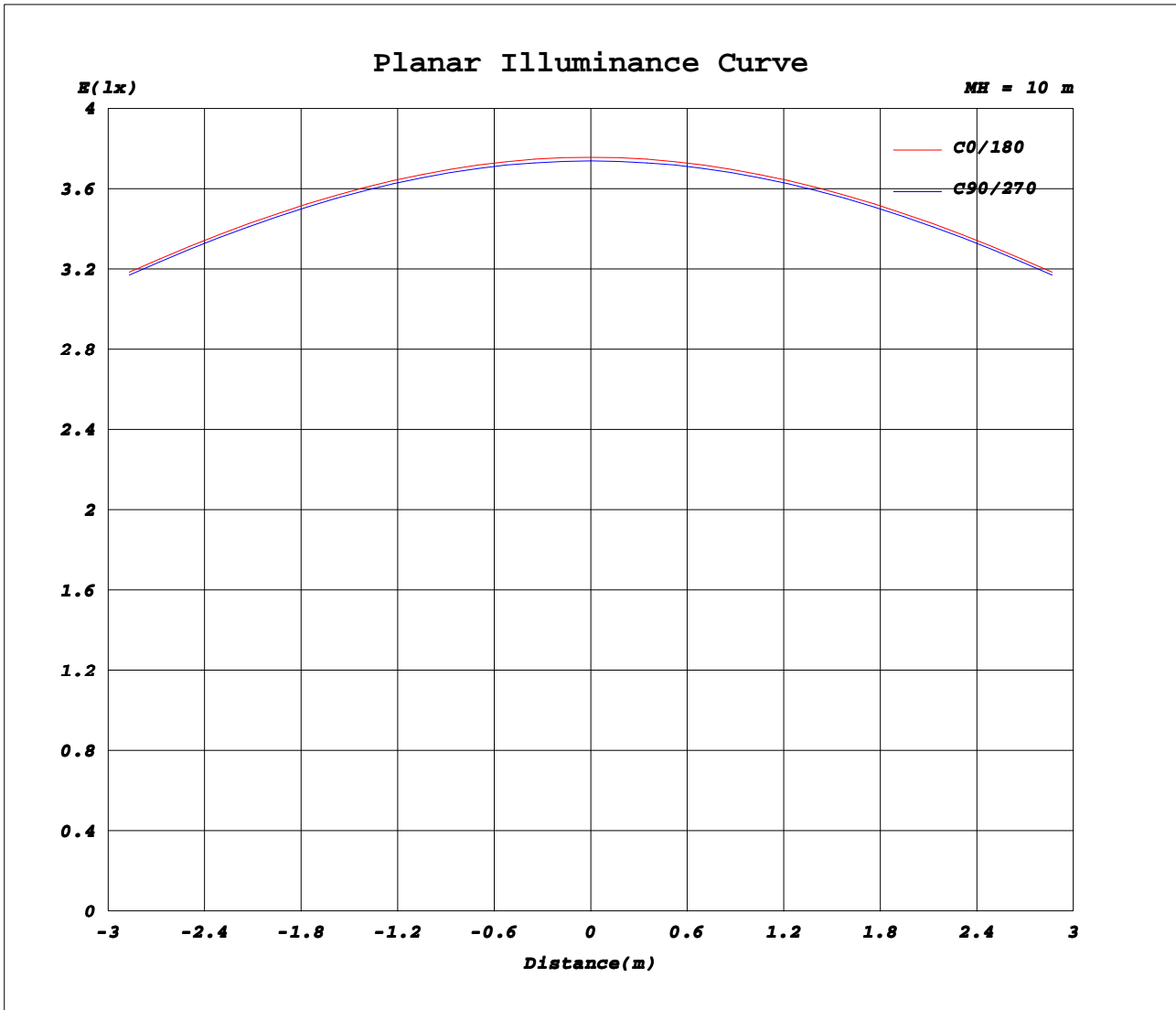
Test:U:221.70V I:0.0480A P:10.200W PF:0.9580 Freq:50.00Hz		
Lamp Flux:1203.22x1 lm		
Name: NS44-φ145MM-10W(ROUND)	Type: LED	
MFR.: Lumega Group	DIM.: D145*H50mm	
	SUR.: D110mm	



**C Range: 0 - 360DEG**  
**C Interval: 30.0DEG**  
**Test Speed: HIGH**  
**Temperature: 25.3DEG**  
**Operators: DAMIN**  
**Test Date: 2022-05-12**

**γ Range: 0 - 180DEG**  
**γ Interval: 1.0DEG**  
**Test System: EVERFINE GO-2000A\_V1 SYSTEM V2.00.443**  
**Humidity: 65.0%**  
**Test Distance: 8.000m [K=0.7063]**  
**Remarks:**

**Planar Illuminance Curve**



**C Range: 0 - 360DEG**  
**C Interval: 30.0DEG**  
**Test Speed: HIGH**  
**Temperature: 25.3DEG**  
**Operators: DAMIN**  
**Test Date: 2022-05-12**

**γ Range: 0 - 180DEG**  
**γ Interval: 1.0DEG**  
**Test System: EVERFINE GO-2000A\_V1 SYSTEM V2.00.443**  
**Humidity: 65.0%**  
**Test Distance: 8.000m [K=0.7063]**  
**Remarks:**

**LUMINOUS DISTRIBUTION INTENSITY DATA**

Test:U:221.70V I:0.0480A P:10.200W PF:0.9580 Freq:50.00Hz Lamp Flux:1203.22x1 lm		
Name: NS44-φ145MM-10W(ROUND)	Type: LED	
MFR.: Lumega Group	DIM.: D145*H50mm	
	SUR.: D110mm	

Table--1

UNIT: cd

C( DEG) γ (DEG)	0	30	60	90	120	150	180	210	240	270	300	330							
0	376	375	374	374	374	375	376	375	374	374	374	375							
5	374	373	373	372	373	373	374	373	373	372	373	373							
10	369	368	367	367	367	368	369	368	367	367	367	368							
15	361	360	359	359	359	360	361	360	359	359	359	360							
20	349	348	347	347	347	348	349	348	347	347	347	348							
25	334	332	332	332	332	332	334	332	332	332	332	332							
30	316	314	314	314	314	314	316	314	314	314	314	314							
35	296	294	294	294	294	294	296	294	294	294	294	294							
40	274	272	271	272	271	272	274	272	271	272	271	272							
45	249	247	247	247	247	247	249	247	247	247	247	247							
50	224	222	221	222	221	222	224	222	221	222	221	222							
55	197	195	195	196	195	195	197	195	195	196	195	195							
60	171	169	168	169	168	169	171	169	168	169	168	169							
65	145	143	143	143	143	143	145	143	143	143	143	143							
70	120	118	118	119	118	118	120	118	118	119	118	118							
75	96.5	95.2	95.1	95.8	95.1	95.2	96.5	95.2	95.1	95.8	95.1	95.2							
80	75.8	74.7	74.6	75.2	74.6	74.7	75.8	74.7	74.6	75.2	74.6	74.7							
85	57.3	56.6	56.7	57.3	56.7	56.6	57.3	56.6	56.7	57.3	56.7	56.6							
90	35.9	38.2	40.5	42.2	40.5	38.2	35.9	38.2	40.5	42.2	40.5	38.2							
95	26.8	27.2	27.9	28.5	27.9	27.2	26.8	27.2	27.9	28.5	27.9	27.2							
100	9.69	8.57	7.30	6.33	7.30	8.57	9.69	8.57	7.30	6.33	7.30	8.57							
105	4.52	5.46	6.24	6.69	6.24	5.46	4.52	5.46	6.24	6.69	6.24	5.46							
110	9.97	8.47	7.34	6.75	7.34	8.47	9.97	8.47	7.34	6.75	7.34	8.47							
115	7.19	5.77	4.67	4.09	4.67	5.77	7.19	5.77	4.67	4.09	4.67	5.77							
120	5.31	4.89	4.55	4.34	4.55	4.89	5.31	4.89	4.55	4.34	4.55	4.89							
125	4.97	4.86	4.73	4.62	4.73	4.86	4.97	4.86	4.73	4.62	4.73	4.86							
130	5.15	5.08	4.99	4.91	4.99	5.08	5.15	5.08	4.99	4.91	4.99	5.08							
135	5.37	5.31	5.24	5.17	5.24	5.31	5.37	5.31	5.24	5.17	5.24	5.31							
140	5.56	5.53	5.48	5.44	5.48	5.53	5.56	5.53	5.48	5.44	5.48	5.53							
145	5.72	5.71	5.67	5.64	5.67	5.71	5.72	5.71	5.67	5.64	5.67	5.71							
150	5.87	5.87	5.85	5.82	5.85	5.87	5.87	5.87	5.85	5.82	5.85	5.87							
155	6.02	6.06	6.08	6.08	6.08	6.06	6.02	6.06	6.08	6.08	6.08	6.06							
160	6.16	6.19	6.21	6.20	6.21	6.19	6.16	6.19	6.21	6.20	6.21	6.19							
165	6.31	6.33	6.33	6.33	6.33	6.33	6.31	6.33	6.33	6.33	6.33	6.33							
170	6.43	6.44	6.44	6.43	6.44	6.44	6.43	6.44	6.44	6.43	6.44	6.44							
175	6.56	6.55	6.55	6.54	6.55	6.55	6.56	6.55	6.55	6.54	6.55	6.55							
180	6.63	6.61	6.60	6.59	6.60	6.61	6.63	6.61	6.60	6.59	6.60	6.61							

**C Range: 0 - 360DEG**  
**C Interval: 30.0DEG**  
**Test Speed: HIGH**  
**Temperature:25.3DEG**  
**Operators:DAMIN**  
**Test Date:2022-05-12**

**γ Range: 0 - 180DEG**  
**γ Interval: 1.0DEG**  
**Test System:EVERFINE GO-2000A\_V1 SYSTEM V2.00.443**  
**Humidity:65.0%**  
**Test Distance:8.000m [K=0.7063]**  
**Remarks:**