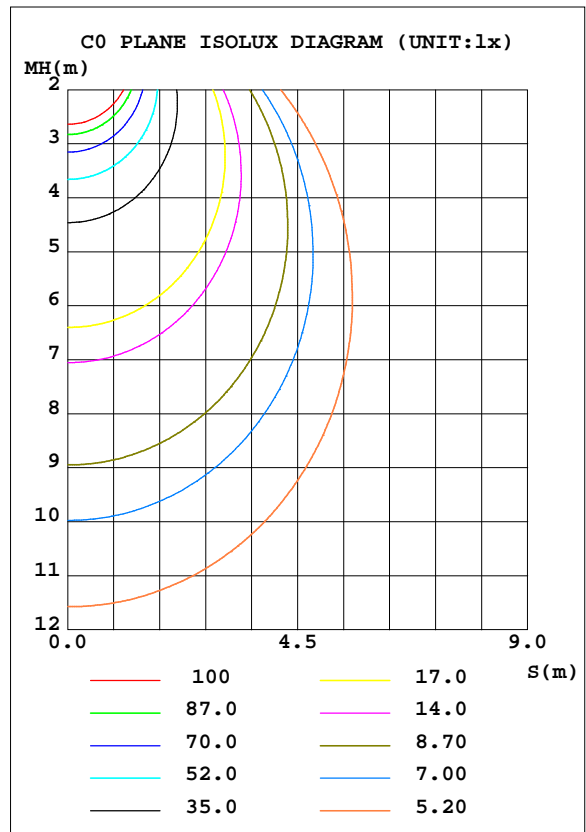
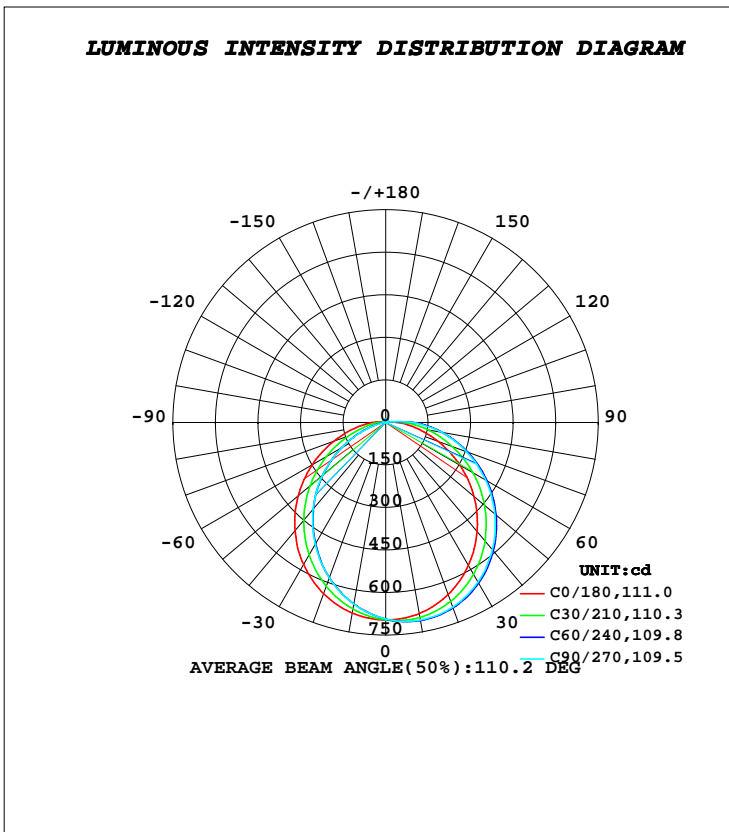


LUMINAIRE PHOTOMETRIC TEST REPORT

Test:U:221.70V I:0.1000A P:19.600W PF:0.9320 Freq:50.00Hz		
Lamp Flux:2074.5lx1 lm		
Name: NS44-φ275MM-20W(Half Moon)	Type: LED	
MFR.: Lumega Group	DIM.: D275*H50mm	
	SUR.: D230mm	

DATA OF LAMP		PHOTOMETRIC DATA Eff: 105.84 lm/W			
MODEL		I _{max} (cd)	709.2	S/MH(C0/180)	1.24
NOMINAL POWER(W)	20	LOR(%)	100.0	S/MH(C90/270)	1.38
RATED VOLTAGE(V)	220	TOTAL FLUX(lm)	2074.5	η UP, DN(C0-180)	1.7,56.4
NOMINAL FLUX(lm)	2074.51	CIE CLASS	DIRECT	η UP, DN(C180-360)	1.5,40.4
LAMPS INSIDE	1	η up(%)	3.3	CIBSE SHR NOM	1.25
TEST VOLTAGE(V)	221.6	η down(%)	96.7	CIBSE SHR MAX	1.35



C Range: 0 - 360DEG
C Interval: 30.0DEG
Test Speed: HIGH
Temperature:25.3DEG
Operators:DAMIN
Test Date:2022-05-12

γ Range: 0 - 180DEG
γ Interval: 1.0DEG
Test System:EVERFINE GO-2000A_V1 SYSTEM V2.00.443
Humidity:65.0%
Test Distance:8.000m [K=0.7063]
Remarks:

ZONAL FLUX DIAGRAM

ZONAL FLUX DIAGRAM:

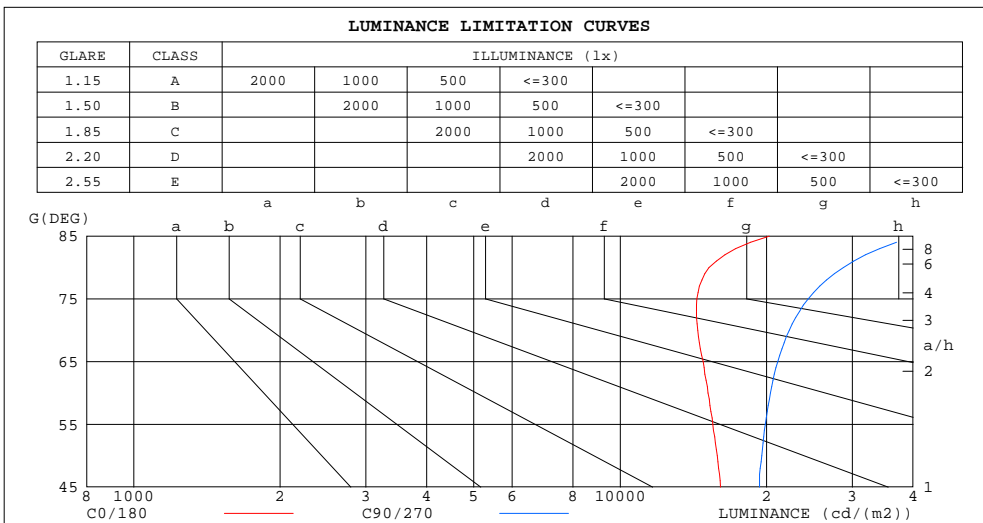
γ	C0	C45	C90	C135	C180	C225	C270	C315	γ	Φ zone	Φ total	%lum,lamp
10	683.8	703.5	707.4	690.0	682.3	658.7	649.9	664.2	0- 10	65.54	65.54	3.16,3.16
20	645.4	683.4	692.6	662.2	642.2	598.2	583.3	612.9	10- 20	187.0	252.5	12.2,12.2
30	583.0	636.8	650.6	609.4	579.1	517.3	497.4	539.7	20- 30	281.3	533.8	25.7,25.7
40	501.9	568.4	585.9	535.9	497.5	423.1	398.4	450.2	30- 40	336.2	870.1	41.9,41.9
50	407.2	481.9	502.4	447.9	403.0	319.3	291.2	350.7	40- 50	346.3	1216	58.6,58.6
60	303.3	384.3	407.5	349.8	299.3	211.4	180.7	243.9	50- 60	312.3	1529	73.7,73.7
70	197.5	280.0	304.6	245.7	195.4	110.6	79.21	140.1	60- 70	243.0	1772	85.4,85.4
80	105.7	177.5	199.9	146.4	105.9	42.09	10.63	57.94	70- 80	156.0	1928	92.9,92.9
90	41.37	78.37	93.89	58.76	45.61	13.84	5.739	18.90	80- 90	79.01	2007	96.7,96.7
100	8.911	4.594	3.095	7.185	16.71	7.961	7.046	6.454	90-100	24.47	2031	97.9,97.9
110	5.926	4.830	4.160	5.329	6.888	7.994	8.398	8.114	100-110	6.879	2038	98.2,98.2
120	7.224	5.830	5.443	6.232	8.055	9.052	9.612	8.688	110-120	6.914	2045	98.6,98.6
130	8.242	7.114	6.774	7.471	9.160	9.949	10.20	9.570	120-130	7.209	2052	98.9,98.9
140	9.173	8.295	8.041	8.569	10.13	10.65	10.77	10.19	130-140	6.971	2059	99.3,99.3
150	10.05	9.380	9.153	9.572	10.88	11.16	11.16	10.73	140-150	6.185	2065	99.6,99.6
160	10.92	10.46	10.26	10.58	11.50	11.60	11.50	11.21	150-160	4.903	2070	99.8,99.8
170	11.57	11.40	11.24	11.45	11.94	11.95	11.81	11.60	160-170	3.202	2073	99.9,99.9
180	12.21	12.09	11.80	11.90	12.22	12.07	11.80	11.89	170-180	1.125	2075	100,100
DEG	LUMINOUS INTENSITY:cd									UNIT:lm		

C Range: 0 - 360DEG
C Interval: 30.0DEG
Test Speed: HIGH
Temperature:25.3DEG
Operators:DAMIN
Test Date:2022-05-12

γ Range: 0 - 180DEG
 γ Interval: 1.0DEG
Test System:EVERFINE GO-2000A_V1 SYSTEM V2.00.443
Humidity:65.0%
Test Distance:8.000m [K=0.7063]
Remarks:

LUMINANCE LIMITATION CURVES

Test:U:221.70V I:0.1000A P:19.600W PF:0.9320 Freq:50.00Hz		
Lamp Flux:2074.51x1 lm		
Name: NS44-φ275MM-20W(Half Moon)	Type: LED	
MFR.: Lumega Group	DIM.: D275*H50mm	
	SUR.: D230mm	



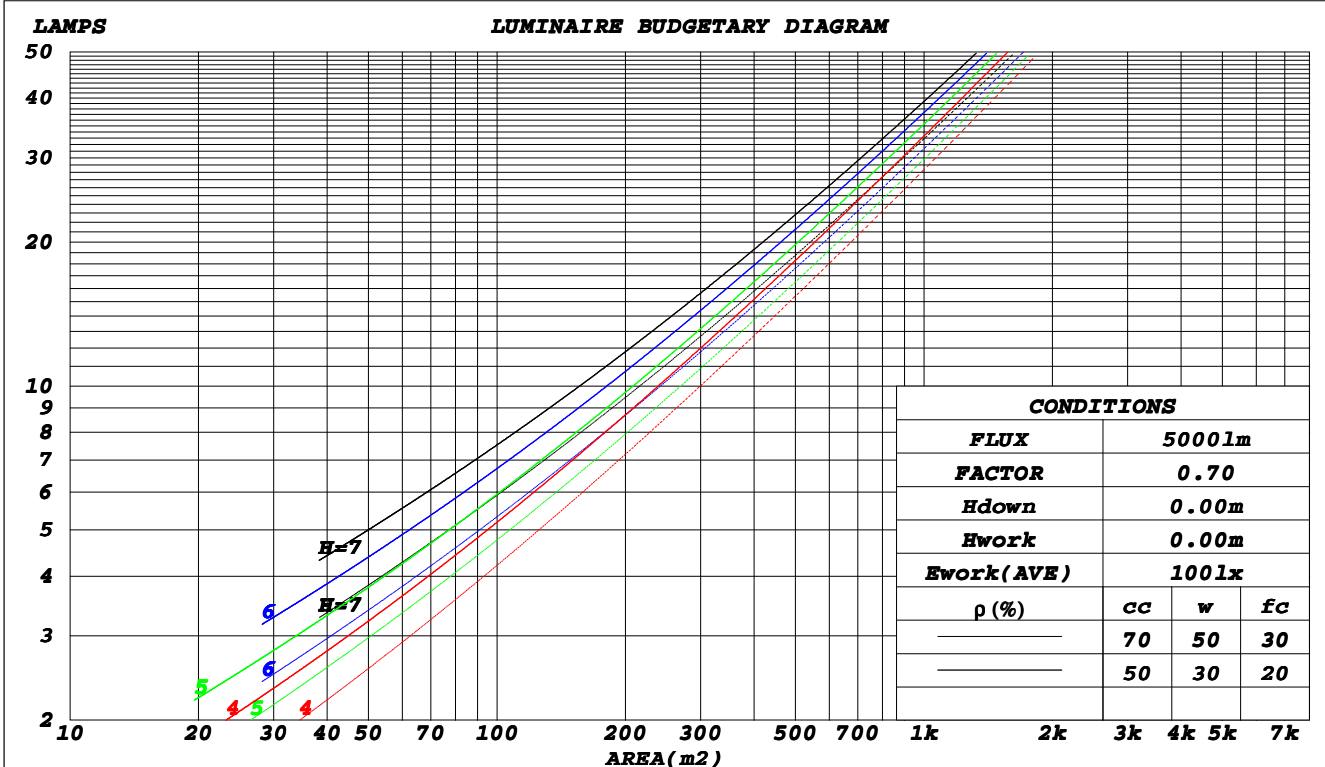
C Range: 0 - 360DEG
C Interval: 30.0DEG
Test Speed: HIGH
Temperature: 25.3DEG
Operators: DAMIN
Test Date: 2022-05-12

γ Range: 0 - 180DEG
γ Interval: 1.0DEG
Test System: EVERFINE GO-2000A_V1 SYSTEM V2.00.443
Humidity: 65.0%
Test Distance: 8.000m [K=0.7063]
Remarks:

CU AND LUMINAIRE BUDGETARY ESTIMATE DIAGRAM

Test:U:221.70V I:0.1000A P:19.600W PF:0.9320 Freq:50.00Hz		
Lamp Flux:2074.51x1 lm		
Name: NS44-φ275MM-20W(Half Moon)	Type: LED	
MFR.: Lumega Group	DIM.: D275*H50mm	
	SUR.: D230mm	

ρcc	80%			70%			50%			30%			10%			0
ρw	50%	30%	10%	50%	30%	10%	50%	30%	10%	50%	30%	10%	50%	30%	10%	0
ρfc	20%			20%			20%			20%			20%			0
RCR	RCR:Room Cavity Ratio						Coefficients of Utilization(CU)									
0.0	1.18	1.18	1.18	1.15	1.15	1.15	1.09	1.09	1.09	1.04	1.04	1.04	.99	.99	.99	.97
1.0	1.02	.97	.93	.99	.95	.91	.94	.91	.88	.90	.87	.85	.86	.84	.81	.79
2.0	.89	.81	.75	.86	.80	.74	.82	.77	.72	.78	.74	.70	.75	.71	.68	.65
3.0	.78	.69	.62	.76	.68	.62	.72	.66	.60	.69	.63	.59	.66	.61	.57	.55
4.0	.69	.60	.53	.67	.59	.52	.64	.57	.51	.61	.55	.50	.59	.54	.49	.47
5.0	.61	.52	.45	.60	.51	.45	.57	.50	.44	.55	.49	.43	.53	.47	.43	.40
6.0	.55	.46	.40	.54	.46	.39	.52	.44	.39	.50	.43	.38	.48	.42	.37	.35
7.0	.50	.41	.35	.49	.41	.35	.47	.40	.34	.45	.39	.34	.44	.38	.33	.31
8.0	.46	.37	.31	.45	.37	.31	.43	.36	.31	.42	.35	.30	.40	.34	.30	.28
9.0	.42	.34	.28	.41	.33	.28	.40	.33	.28	.38	.32	.27	.37	.31	.27	.25
10.0	.39	.31	.25	.38	.30	.25	.37	.30	.25	.36	.29	.25	.35	.29	.24	.23



C Range: 0 - 360DEG
 C Interval: 30.0DEG
 Test Speed: HIGH
 Temperature: 25.3DEG
 Operators: DAMIN
 Test Date: 2022-05-12

γ Range: 0 - 180DEG
 γ Interval: 1.0DEG
 Test System: EVERFINE GO-2000A_V1 SYSTEM V2.00.443
 Humidity: 65.0%
 Test Distance: 8.000m [K=0.7063]
 Remarks:

WEC AND CCEC

Test:U:221.70V I:0.1000A P:19.600W PF:0.9320 Freq:50.00Hz		
Lamp Flux:2074.51x1 lm		
Name: NS44-φ275MM-20W(Half Moon)	Type: LED	
MFR.: Lumega Group	DIM.: D275*H50mm	
	SUR.: D230mm	

ρ _{cc}	80%			70%			50%			30%			10%			0
ρ _w	50%	30%	10%	50%	30%	10%	50%	30%	10%	50%	30%	10%	50%	30%	10%	0
ρ _{fc}	20%			20%			20%			20%			20%			0
RCR	RCR:Room Cavity Ratio						Wall Exitance Coefficients(WEC)									
0.0																
1.0	.331	.188	.060	.323	.184	.059	.308	.177	.056	.294	.170	.054	.281	.163	.053	
2.0	.303	.166	.051	.295	.163	.050	.282	.157	.049	.269	.151	.047	.258	.146	.046	
3.0	.276	.147	.044	.270	.145	.043	.258	.140	.042	.247	.135	.041	.236	.131	.040	
4.0	.253	.131	.039	.247	.129	.038	.237	.125	.037	.227	.122	.037	.217	.118	.036	
5.0	.233	.119	.034	.228	.117	.034	.218	.114	.033	.209	.110	.033	.201	.107	.032	
6.0	.215	.108	.031	.211	.106	.031	.202	.104	.030	.194	.101	.030	.187	.098	.029	
7.0	.200	.099	.028	.196	.098	.028	.188	.095	.027	.181	.093	.027	.174	.090	.027	
8.0	.186	.091	.026	.183	.090	.025	.176	.088	.025	.169	.086	.025	.163	.084	.024	
9.0	.174	.084	.024	.171	.083	.023	.165	.081	.023	.159	.080	.023	.153	.078	.022	
10.0	.164	.079	.022	.161	.078	.022	.155	.076	.021	.150	.074	.021	.145	.073	.021	

ρ _{cc}	80%			70%			50%			30%			10%			0
ρ _w	50%	30%	10%	50%	30%	10%	50%	30%	10%	50%	30%	10%	50%	30%	10%	0
ρ _{fc}	20%			20%			20%			20%			20%			0
RCR	RCR:Room Cavity Ratio						Ceiling Cavity Exitance Coefficients(CCEC)									
0.0	.215	.215	.215	.184	.184	.184	.126	.126	.126	.072	.072	.072	.023	.023	.023	
1.0	.207	.181	.158	.177	.155	.136	.121	.107	.094	.070	.062	.055	.022	.020	.018	
2.0	.199	.157	.122	.170	.135	.105	.117	.094	.074	.067	.054	.043	.022	.018	.014	
3.0	.191	.140	.099	.164	.121	.086	.112	.084	.060	.065	.049	.035	.021	.016	.012	
4.0	.183	.127	.083	.157	.109	.072	.108	.076	.051	.063	.045	.030	.020	.015	.010	
5.0	.176	.116	.072	.151	.101	.063	.104	.070	.044	.060	.041	.026	.019	.013	.009	
6.0	.168	.108	.065	.145	.094	.056	.100	.065	.040	.058	.039	.024	.019	.013	.008	
7.0	.162	.101	.059	.139	.088	.051	.096	.061	.036	.056	.036	.022	.018	.012	.007	
8.0	.155	.095	.054	.133	.083	.047	.092	.058	.034	.054	.034	.020	.017	.011	.007	
9.0	.149	.090	.051	.128	.079	.045	.089	.055	.032	.052	.033	.019	.017	.011	.006	
10.0	.143	.086	.048	.123	.075	.042	.086	.053	.030	.050	.031	.018	.016	.010	.006	

C Range: 0 - 360DEG
C Interval: 30.0DEG
Test Speed: HIGH
Temperature:25.3DEG
Operators:DAMIN
Test Date:2022-05-12

γ Range: 0 - 180DEG
γ Interval: 1.0DEG
Test System:EVERFINE GO-2000A_V1 SYSTEM V2.00.443
Humidity:65.0%
Test Distance:8.000m [K=0.7063]
Remarks:

UGR(Unified Glare Rating) Table

Test:U:221.70V I:0.1000A P:19.600W PF:0.9320 Freq:50.00Hz		
Lamp Flux:2074.51x1 lm		
Name: NS44-φ275MM-20W(Half Moon)	Type: LED	
MFR.: Lumega Group	DIM.: D275*H50mm	
	SUR.: D230mm	

ceiling/cavity	0.7	0.7	0.5	0.5	0.3	0.7	0.7	0.5	0.5	0.3
walls	0.5	0.3	0.5	0.3	0.3	0.5	0.3	0.5	0.3	0.3
working plane	0.2	0.2	0.2	0.2	0.2	0.2	0.2	0.2	0.2	0.2
Room dimensions	Viewed crosswise					Viewed endwise				
x = 2H y = 2H	22.8	24.3	23.1	24.5	24.8	24.0	25.5	24.3	25.8	26.0
3H	24.4	25.8	24.7	26.1	26.4	26.1	27.4	26.4	27.7	28.0
4H	25.1	26.4	25.5	26.7	27.1	27.1	28.4	27.5	28.7	29.0
6H	25.7	27.0	26.1	27.3	27.7	28.1	29.4	28.5	29.7	30.0
8H	26.0	27.2	26.4	27.6	27.9	28.6	29.8	29.0	30.2	30.5
12H	26.3	27.5	26.7	27.8	28.2	29.1	30.3	29.5	30.6	31.0
4H 2H	23.7	25.1	24.1	25.4	25.7	24.6	26.0	25.0	26.3	26.6
3H	25.6	26.7	26.0	27.1	27.5	27.0	28.1	27.4	28.5	28.9
4H	26.4	27.5	26.9	27.9	28.3	28.2	29.2	28.6	29.6	30.0
6H	27.2	28.2	27.7	28.6	29.0	29.4	30.3	29.8	30.8	31.2
8H	27.6	28.5	28.1	28.9	29.4	30.0	30.9	30.5	31.3	31.8
12H	28.0	28.8	28.5	29.2	29.7	30.6	31.4	31.1	31.9	32.4
8H 4H	27.1	28.0	27.6	28.4	28.9	28.6	29.4	29.0	29.9	30.3
6H	28.2	28.9	28.7	29.4	29.9	30.1	30.8	30.5	31.3	31.8
8H	28.7	29.4	29.2	29.8	30.4	30.8	31.5	31.4	32.0	32.5
12H	29.2	29.8	29.8	30.3	30.9	31.7	32.3	32.2	32.8	33.3
12H 4H	27.3	28.1	27.7	28.5	29.0	28.6	29.4	29.1	29.9	30.3
6H	28.5	29.1	29.0	29.6	30.1	30.2	30.8	30.7	31.3	31.8
8H	29.1	29.7	29.6	30.2	30.7	31.1	31.6	31.6	32.1	32.7
Variations with the observer position at spacings(CIE Pub.117):										
S = 1.0H	+ 0.1 / - 0.2					+ 0.1 / - 0.1				
1.5H	+ 0.2 / - 0.3					+ 0.2 / - 0.3				
2.0H	+ 0.2 / - 0.5					+ 0.2 / - 0.4				

CIE Pub.117, 2075 lm Total Lamp Luminous Flux Corrected (8log(F/F0) = 2.5)
 Area: 0.04 m2

C Range: 0 - 360DEG
C Interval: 30.0DEG
Test Speed: HIGH
Temperature:25.3DEG
Operators:DAMIN
Test Date:2022-05-12

γ Range: 0 - 180DEG
γ Interval: 1.0DEG
Test System:EVERFINE GO-2000A_V1 SYSTEM V2.00.443
Humidity:65.0%
Test Distance:8.000m [K=0.7063]
Remarks:

UTILIZATION FACTORS TABLE

Test:U:221.70V I:0.1000A P:19.600W PF:0.9320 Freq:50.00Hz Lamp Flux:2074.51x1 lm		
Name: NS44-φ275MM-20W(Half Moon)	Type: LED	
MFR.: Lumega Group	DIM.: D275*H50mm	
	SUR.: D230mm	

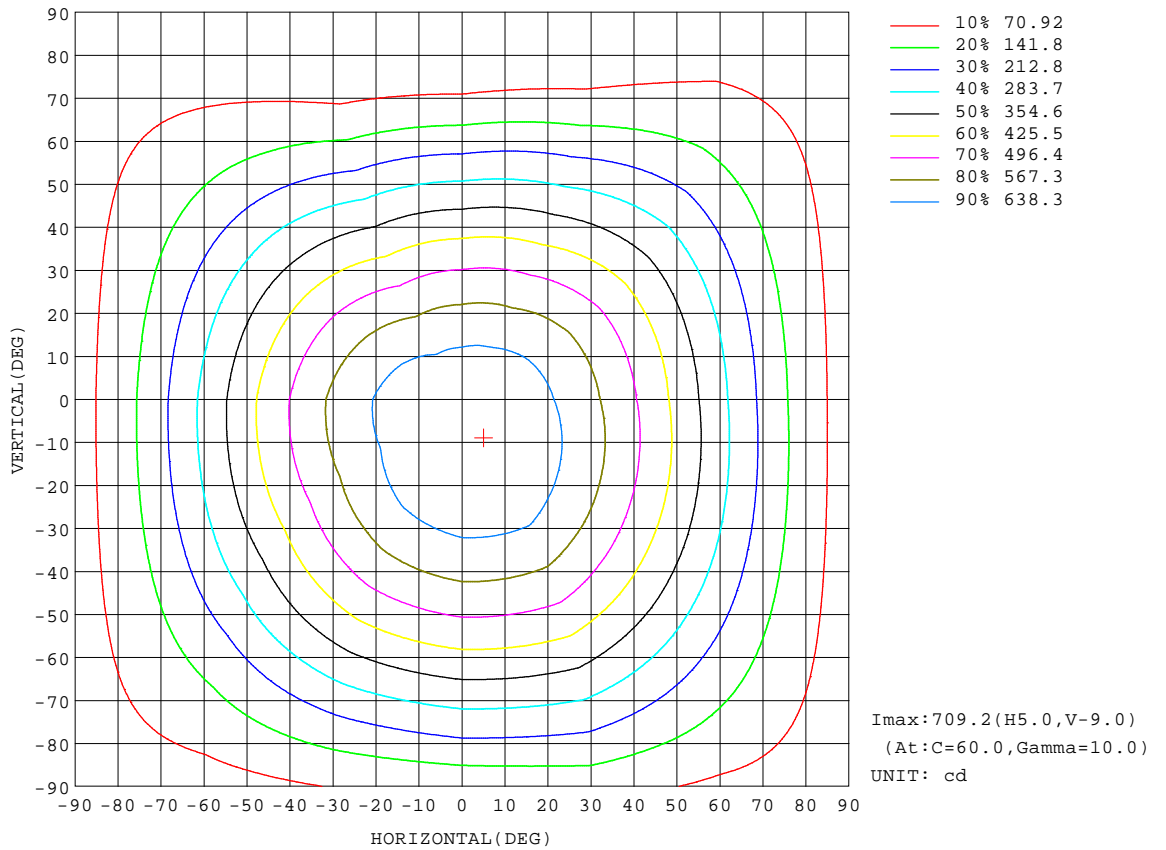
REFLECTANCE										
Ceiling	0.8	0.8	0.8	0.7	0.7	0.7	0.5	0.5	0.5	0
Walls	0.7	0.5	0.3	0.7	0.5	0.3	0.7	0.5	0.3	0
Working plane	0.2	0.2	0.2	0.2	0.2	0.2	0.2	0.2	0.2	0
ROOM INDEX	UTILIZATION FACTORS(PERCENT) $k(RI) \times RCR = 5$									
k = 0.60	56	44	37	55	44	37	54	43	37	30
0.80	66	54	46	65	53	46	63	52	46	39
1.00	74	63	55	73	62	55	70	63	54	47
1.25	81	70	63	79	69	62	76	68	61	53
1.50	86	76	68	84	74	68	81	72	66	58
2.00	93	84	77	91	82	76	87	80	74	66
2.50	97	88	82	94	87	81	90	84	79	70
3.00	100	93	87	98	91	85	93	88	83	74
4.00	104	98	93	102	96	91	97	92	88	78
5.00	107	101	97	104	99	95	99	95	92	81
ROOM INDEX	UF(total)									Direct
According to DIN EN 13032-2 2004			Suspended					SHRNOM = 1.25		

C Range: 0 - 360DEG
C Interval: 30.0DEG
Test Speed: HIGH
Temperature:25.3DEG
Operators:DAMIN
Test Date:2022-05-12

γ Range: 0 - 180DEG
γ Interval: 1.0DEG
Test System:EVERFINE GO-2000A_V1 SYSTEM V2.00.443
Humidity:65.0%
Test Distance:8.000m [K=0.7063]
Remarks:

ISOCANDELA DIAGRAM

Test:U:221.70V I:0.1000A P:19.600W PF:0.9320 Freq:50.00Hz		
Lamp Flux:2074.51x1 l m		
Name: NS44-φ275MM-20W(Half Moon)	Type: LED	
MFR.: Lumega Group	DIM.: D275*H50mm	
	SUR.: D230mm	



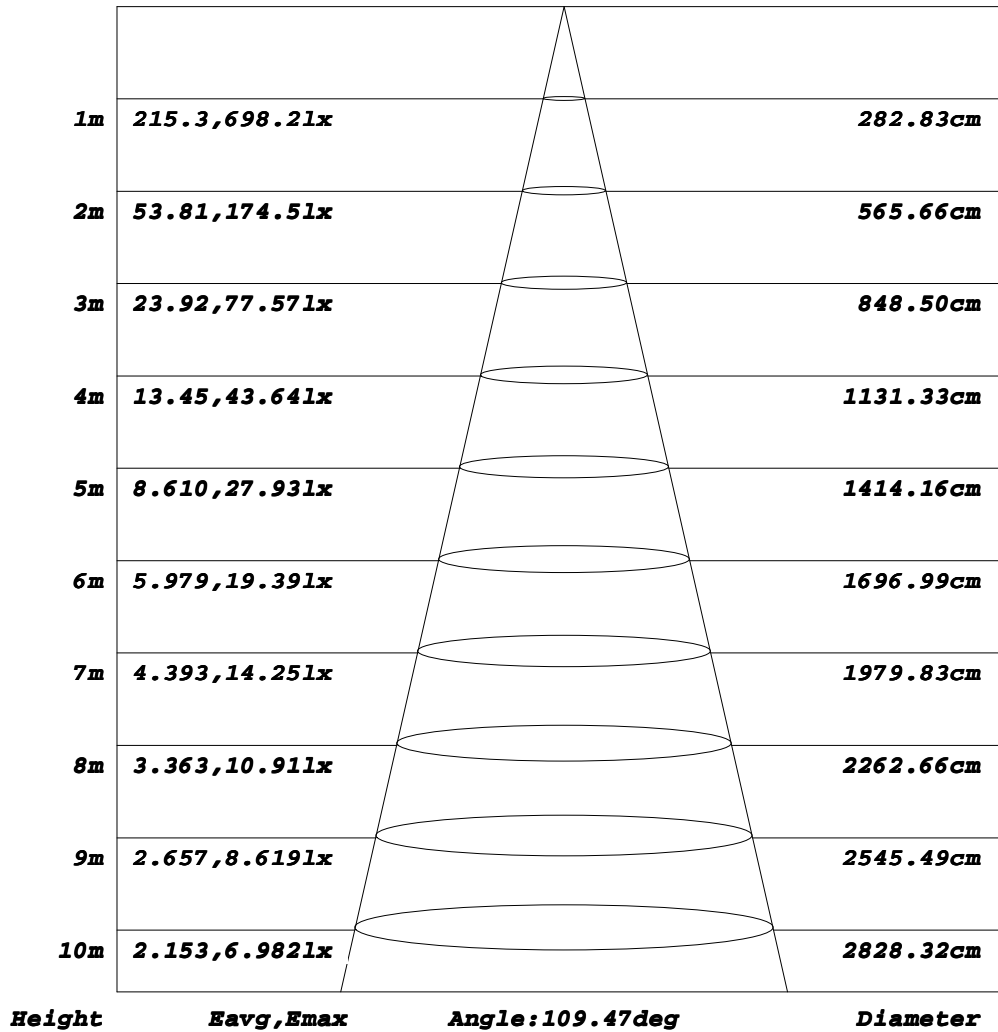
C Range: 0 - 360DEG
C Interval: 30.0DEG
Test Speed: HIGH
Temperature: 25.3DEG
Operators: DAMIN
Test Date: 2022-05-12

γ Range: 0 - 180DEG
γ Interval: 1.0DEG
Test System: EVERFINE GO-2000A_V1 SYSTEM V2.00.443
Humidity: 65.0%
Test Distance: 8.000m [K=0.7063]
Remarks:

AAI Figure

Test:U:221.70V I:0.1000A P:19.600W PF:0.9320 Freq:50.00Hz		
Lamp Flux:2074.51x1 lm		
Name: NS44-φ275MM-20W(Half Moon)	Type: LED	
MFR.: Lumega Group	DIM.: D275*H50mm	
	SUR.: D230mm	

Flux out:1379 lm



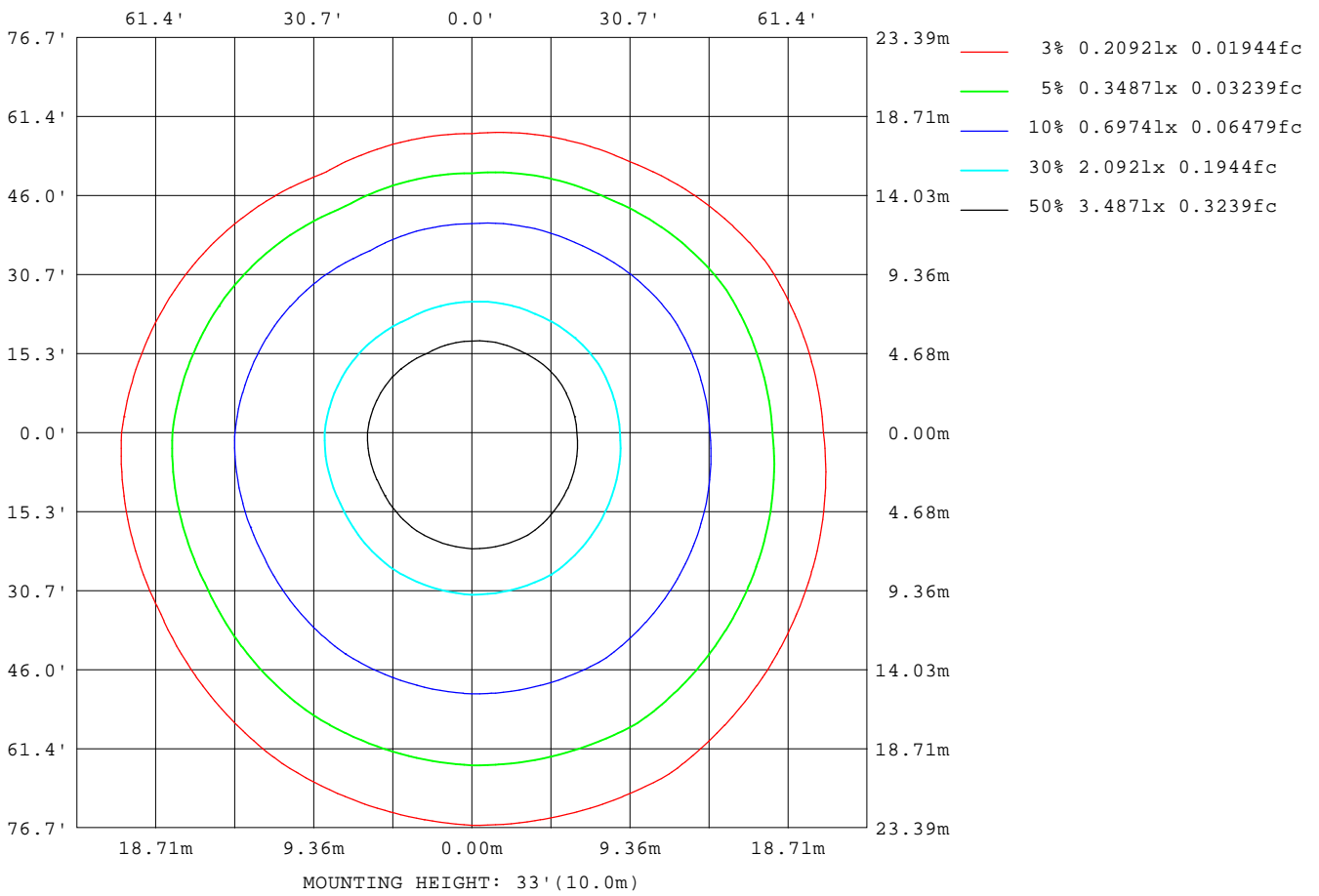
Note: The Curves indicate the illuminated area and the average illumination when the luminaire is at different distance.

C Range: 0 - 360DEG
C Interval: 30.0DEG
Test Speed: HIGH
Temperature: 25.3DEG
Operators: DAMIN
Test Date: 2022-05-12

γ Range: 0 - 180DEG
γ Interval: 1.0DEG
Test System: EVERFINE GO-2000A_V1 SYSTEM V2.00.443
Humidity: 65.0%
Test Distance: 8.000m [K=0.7063]
Remarks:

ISOLUX DIAGRAM

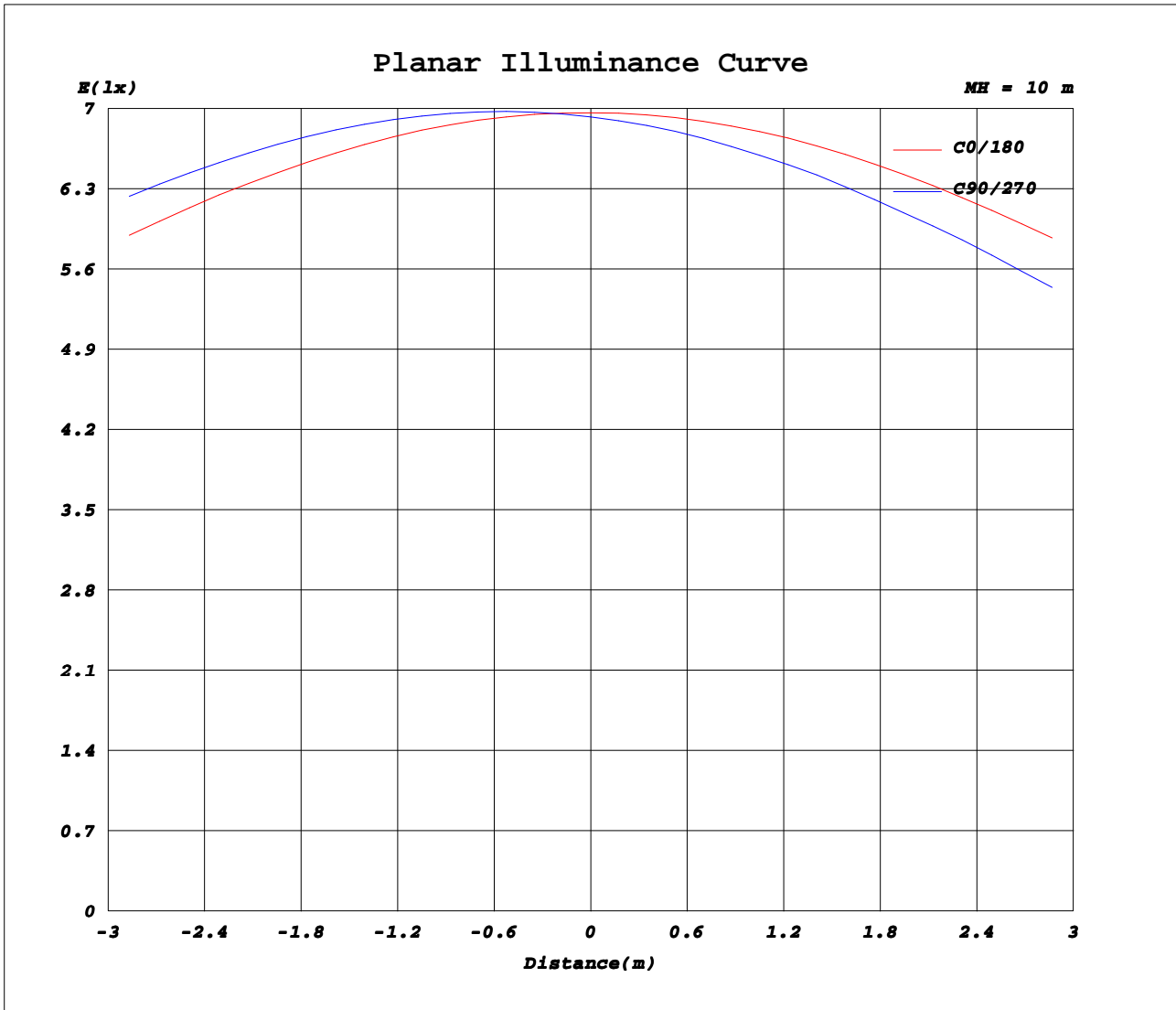
Test:U:221.70V I:0.1000A P:19.600W PF:0.9320 Freq:50.00Hz		
Lamp Flux:2074.51x1 lm		
Name: NS44-φ275MM-20W(Half Moon)	Type: LED	
MFR.: Lumega Group	DIM.: D275*H50mm	
	SUR.: D230mm	



C Range: 0 - 360DEG
C Interval: 30.0DEG
Test Speed: HIGH
Temperature: 25.3DEG
Operators: DAMIN
Test Date: 2022-05-12

γ Range: 0 - 180DEG
γ Interval: 1.0DEG
Test System: EVERFINE GO-2000A_V1 SYSTEM V2.00.443
Humidity: 65.0%
Test Distance: 8.000m [K=0.7063]
Remarks:

Planar Illuminance Curve



C Range: 0 - 360DEG
C Interval: 30.0DEG
Test Speed: HIGH
Temperature: 25.3DEG
Operators: DAMIN
Test Date: 2022-05-12

γ Range: 0 - 180DEG
γ Interval: 1.0DEG
Test System: EVERFINE GO-2000A_V1 SYSTEM V2.00.443
Humidity: 65.0%
Test Distance: 8.000m [K=0.7063]
Remarks:

LUMINOUS DISTRIBUTION INTENSITY DATA

Test:U:221.70V I:0.1000A P:19.600W PF:0.9320 Freq:50.00Hz Lamp Flux:2074.51x1 lm		
Name: NS44-φ275MM-20W(Half Moon)	Type: LED	
MFR.: Lumega Group	DIM.: D275*H50mm	
	SUR.: D230mm	

Table--1

UNIT: cd

C(DEG) γ (DEG)	0	30	60	90	120	150	180	210	240	270	300	330							
0	696	696	694	693	691	690	696	696	694	693	691	690							
5	694	701	705	704	698	690	693	685	675	675	678	684							
10	684	698	709	707	698	682	682	668	650	650	657	671							
15	668	688	706	704	690	668	665	644	618	619	632	652							
20	645	671	696	693	676	648	642	614	582	583	599	627							
25	617	648	678	675	656	621	613	579	541	542	561	596							
30	583	619	655	651	629	590	579	540	495	497	519	560							
35	545	585	625	621	596	554	542	497	446	449	473	520							
40	502	546	591	586	560	512	498	450	397	398	424	476							
45	455	501	551	547	518	468	452	400	345	345	375	429							
50	407	455	508	502	475	421	403	348	290	291	322	379							
55	356	406	462	456	427	372	351	296	234	236	267	328							
60	303	356	413	407	378	322	299	242	180	181	213	275							
65	250	303	362	356	326	271	247	190	129	128	160	222							
70	198	251	309	305	273	218	195	140	81.3	79.2	109	171							
75	149	200	255	252	220	168	148	96.8	44.8	38.4	65.8	123							
80	106	153	202	200	168	125	106	62.8	21.4	10.6	32.9	83.0							
85	70.5	105	150	143	118	81.7	71.7	38.1	9.56	5.19	10.6	52.4							
90	41.4	58.2	98.6	93.9	73.4	44.1	45.6	21.9	5.75	5.74	6.89	30.9							
95	25.2	23.4	33.1	42.5	31.4	22.8	27.7	12.7	6.36	6.35	6.11	14.0							
100	8.91	5.53	3.66	3.09	3.47	10.9	16.7	8.86	7.07	7.05	6.74	6.17							
105	5.18	4.37	4.64	3.71	4.05	7.29	9.92	7.72	7.76	7.73	7.39	6.92							
110	5.93	4.98	4.68	4.16	5.25	5.41	6.89	7.62	8.37	8.40	7.98	8.25							
115	6.49	6.06	4.90	4.78	5.26	5.99	7.48	8.17	8.93	9.10	8.53	7.90							
120	7.22	6.22	5.44	5.44	5.87	6.60	8.05	8.69	9.41	9.61	9.03	8.34							
125	7.91	6.84	6.09	6.11	6.49	7.21	8.62	9.20	9.83	9.81	9.73	8.88							
130	8.24	7.46	6.76	6.77	7.14	7.80	9.16	9.67	10.2	10.2	9.91	9.23							
135	8.69	8.04	7.39	7.45	7.73	8.33	9.68	10.1	10.6	10.6	10.1	9.63							
140	9.17	8.60	7.99	8.04	8.29	8.85	10.1	10.5	10.8	10.8	10.4	9.96							
145	9.63	9.13	8.56	8.62	8.78	9.36	10.5	10.8	11.0	11.0	10.7	10.3							
150	10.1	9.66	9.10	9.15	9.28	9.86	10.9	11.1	11.3	11.2	10.9	10.5							
155	10.5	10.2	9.70	9.68	9.82	10.3	11.2	11.3	11.4	11.3	11.1	10.8							
160	10.9	10.7	10.3	10.3	10.4	10.8	11.5	11.6	11.6	11.5	11.3	11.1							
165	11.3	11.1	10.8	10.8	10.9	11.2	11.8	11.9	11.8	11.7	11.6	11.3							
170	11.6	11.5	11.3	11.2	11.3	11.6	11.9	12.1	11.9	11.8	11.7	11.5							
175	12.0	12.0	11.8	11.6	11.7	11.9	12.1	12.2	12.0	11.8	11.9	11.7							
180	12.2	12.2	11.9	11.8	11.9	11.9	12.2	12.2	11.9	11.8	11.9	11.9							

C Range: 0 - 360DEG
C Interval: 30.0DEG
Test Speed: HIGH
Temperature:25.3DEG
Operators:DAMIN
Test Date:2022-05-12

γ Range: 0 - 180DEG
γ Interval: 1.0DEG
Test System:EVERFINE GO-2000A_V1 SYSTEM V2.00.443
Humidity:65.0%
Test Distance:8.000m [K=0.7063]
Remarks: