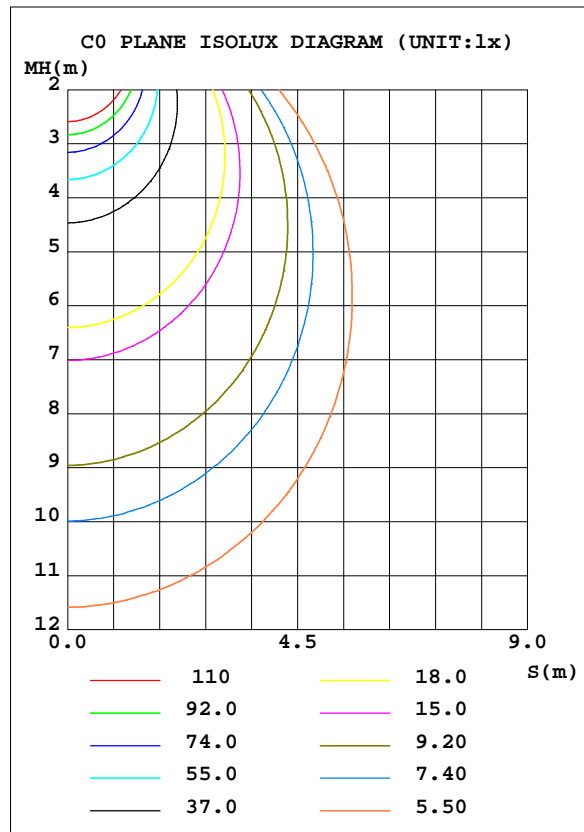
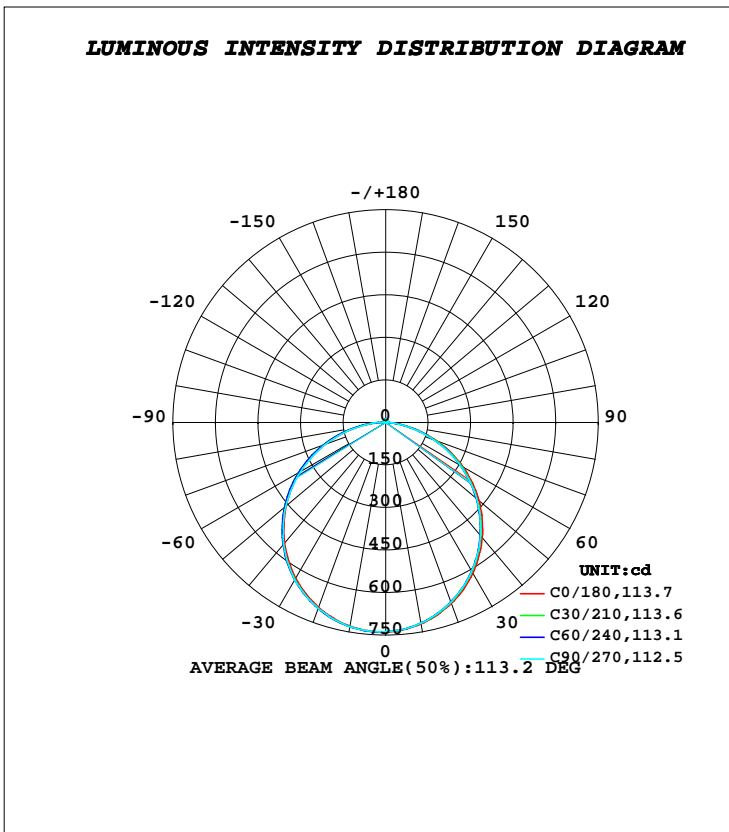


LUMINAIRE PHOTOMETRIC TEST REPORT

Test:U:220.60V I:0.0960A P:20.200W PF:0.9510 Freq:50.00Hz		
Lamp Flux:2185.52x1 lm		
Name: NS60-595*595-20W (Round)	Type: LED	
MFR.: Lumega Group	DIM.: 595*595mm	
	SUR.: φ540mm	

DATA OF LAMP		PHOTOMETRIC DATA Eff: 108.19 lm/W			
MODEL		I _{max} (cd)	739.1	S/MH(C0/180)	1.24
NOMINAL POWER(W)	20	LOR(%)	100.0	S/MH(C90/270)	1.23
RATED VOLTAGE(V)	220	TOTAL FLUX(lm)	2185.5	η UP, DN(C0-180)	1.1,46.8
NOMINAL FLUX(lm)	2185.52	CIE CLASS	DIRECT	η UP, DN(C180-360)	1.2,51.0
LAMPS INSIDE	1	η up(%)	2.2	CIBSE SHR NOM	1.25
TEST VOLTAGE(V)	220	η down(%)	97.8	CIBSE SHR MAX	1.35



C Range: 0 - 360DEG
C Interval: 30.0DEG
Test Speed: HIGH
Temperature:25.3DEG
Operators:DAMIN
Test Date:2022-04-23

γ Range: 0 - 180DEG
γ Interval: 1.0DEG
Test System:EVERFINE GO-2000A_V1 SYSTEM V2.00.443
Humidity:65.0%
Test Distance:8.000m [K=0.7063]
Remarks:

ZONAL FLUX DIAGRAM

ZONAL FLUX DIAGRAM:

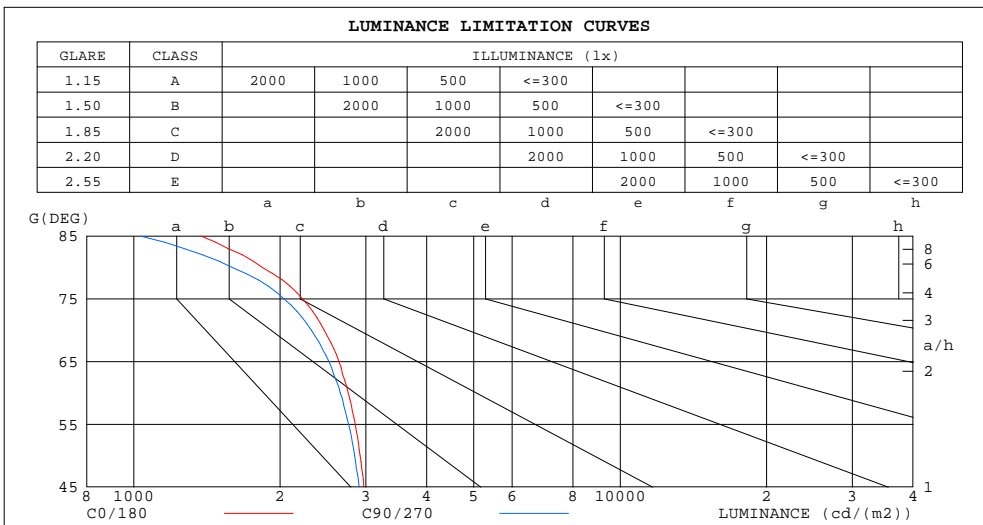
γ	C0	C45	C90	C135	C180	C225	C270	C315	γ	Φ zone	Φ total	%lum,lamp
10	721.2	718.5	718.3	722.9	728.9	730.9	730.9	726.3	0- 10	69.82	69.82	3.19,3.19
20	679.2	673.6	673.6	681.8	693.4	697.6	697.3	689.9	10- 20	199.9	269.7	12.3,12.3
30	614.2	607.0	606.7	618.4	635.1	641.1	640.9	630.0	20- 30	303.1	572.8	26.2,26.2
40	529.7	520.0	519.9	534.6	555.7	562.2	559.8	549.0	30- 40	366.0	938.8	43,43
50	430.1	418.8	418.9	434.5	458.7	466.0	459.9	451.7	40- 50	380.6	1319	60.4,60.4
60	316.1	307.6	304.3	323.6	347.7	355.2	345.9	339.0	50- 60	346.4	1666	76.2,76.2
70	193.1	185.3	181.6	203.5	226.4	235.6	225.8	218.0	60- 70	267.7	1934	88.5,88.5
80	73.19	68.08	63.46	83.71	103.7	114.1	104.5	98.60	70- 80	156.5	2090	95.6,95.6
90	4.133	4.373	4.247	5.007	10.08	16.30	16.03	9.295	80- 90	46.77	2137	97.8,97.8
100	5.270	5.292	5.215	5.305	6.193	6.084	5.973	6.064	90-100	6.033	2143	98,98
110	6.259	6.294	6.282	6.260	7.095	7.026	6.981	7.013	100-110	6.530	2149	98.3,98.3
120	7.151	7.189	7.197	7.149	7.928	7.874	7.849	7.866	110-120	7.030	2156	98.7,98.7
130	8.049	8.072	8.090	8.030	8.762	8.709	8.699	8.692	120-130	7.130	2164	99,99
140	8.898	8.937	8.932	8.897	9.532	9.487	9.488	9.477	130-140	6.799	2170	99.3,99.3
150	9.850	9.891	9.903	9.824	10.26	10.25	10.24	10.25	140-150	6.034	2176	99.6,99.6
160	10.78	10.79	10.89	10.73	11.04	10.99	11.02	10.98	150-160	4.843	2181	99.8,99.8
170	11.26	11.36	11.38	11.31	11.51	11.50	11.45	11.45	160-170	3.162	2184	99.9,99.9
180	11.53	11.58	11.58	11.56	11.53	11.58	11.57	11.56	170-180	1.098	2186	100,100
DEG	LUMINOUS INTENSITY:cd									UNIT:lm		

C Range: 0 - 360DEG
C Interval: 30.0DEG
Test Speed: HIGH
Temperature:25.3DEG
Operators:DAMIN
Test Date:2022-04-23

γ Range: 0 - 180DEG
 γ Interval: 1.0DEG
Test System:EVERFINE GO-2000A_V1 SYSTEM V2.00.443
Humidity:65.0%
Test Distance:8.000m [K=0.7063]
Remarks:

LUMINANCE LIMITATION CURVES

Test:U:220.60V I:0.0960A P:20.200W PF:0.9510 Freq:50.00Hz		
Lamp Flux:2185.52x1 lm		
Name: NS60-595*595-20W (Round)	Type: LED	
MFR.: Lumega Group	DIM.: 595*595mm	
	SUR.: φ540mm	



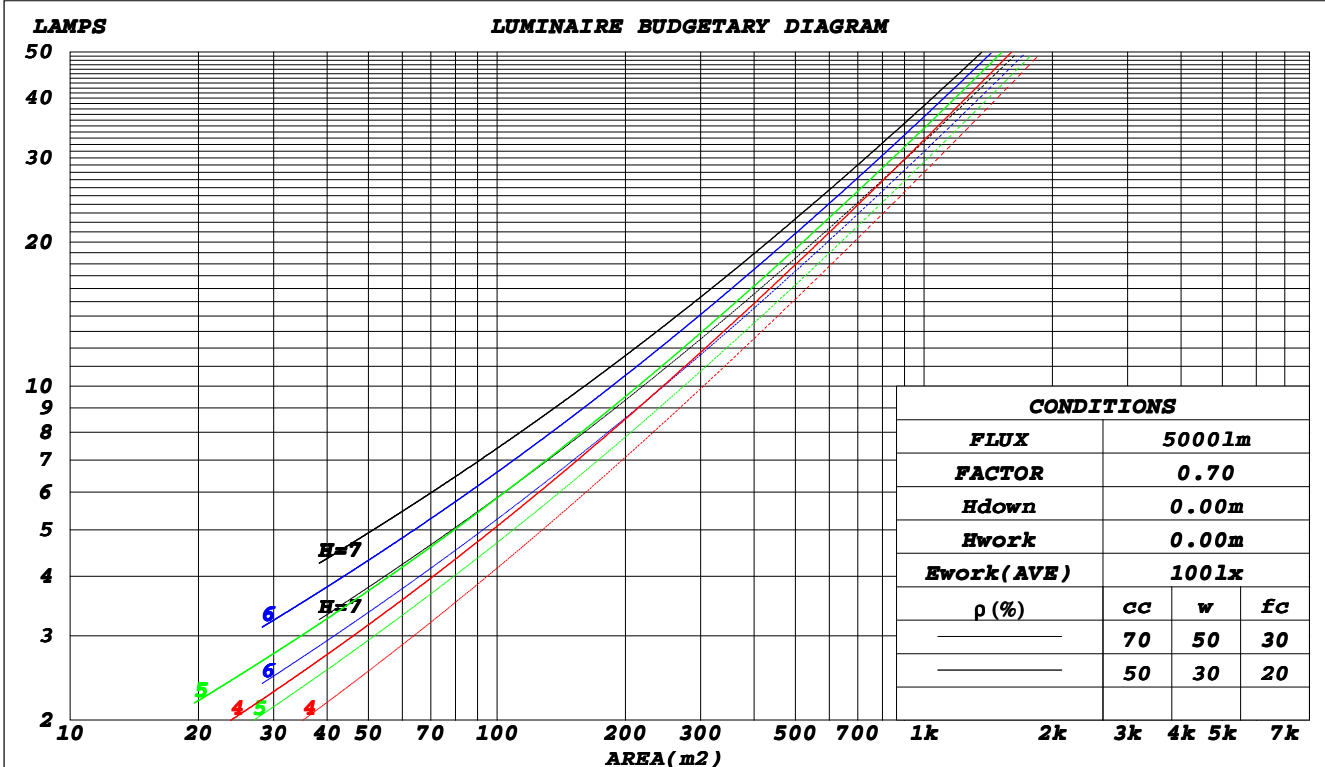
C Range: 0 - 360DEG
C Interval: 30.0DEG
Test Speed: HIGH
Temperature: 25.3DEG
Operators: DAMIN
Test Date: 2022-04-23

γ Range: 0 - 180DEG
γ Interval: 1.0DEG
Test System: EVERFINE GO-2000A_V1 SYSTEM V2.00.443
Humidity: 65.0%
Test Distance: 8.000m [K=0.7063]
Remarks:

CU AND LUMINAIRE BUDGETARY ESTIMATE DIAGRAM

Test:U:220.60V I:0.0960A P:20.200W PF:0.9510 Freq:50.00Hz		
Lamp Flux:2185.52x1 lm		
Name: NS60-595*595-20W (Round)	Type: LED	
MFR.: Lumega Group	DIM.: 595*595mm	
	SUR.: φ540mm	

ρ _{cc}	80%			70%			50%			30%			10%			0
ρ _w	50%	30%	10%	50%	30%	10%	50%	30%	10%	50%	30%	10%	50%	30%	10%	0
ρ _{fc}	20%			20%			20%			20%			20%			0
RCR	RCR:Room Cavity Ratio						Coefficients of Utilization(CU)									
0.0	1.19	1.19	1.19	1.16	1.16	1.16	1.10	1.10	1.10	1.05	1.05	1.05	.00	.00	.00	.98
1.0	1.03	.99	.95	1.01	.97	.93	.96	.93	.90	.92	.89	.87	.88	.86	.84	.81
2.0	.90	.83	.77	.88	.81	.76	.84	.78	.74	.80	.76	.72	.77	.73	.70	.67
3.0	.79	.70	.64	.77	.69	.63	.74	.67	.62	.70	.65	.60	.68	.63	.59	.57
4.0	.70	.61	.54	.68	.60	.53	.65	.58	.52	.63	.56	.51	.60	.55	.50	.48
5.0	.62	.53	.46	.61	.52	.46	.58	.51	.45	.56	.50	.44	.54	.48	.44	.42
6.0	.56	.47	.40	.55	.46	.40	.53	.45	.39	.51	.44	.39	.49	.43	.38	.36
7.0	.51	.42	.36	.50	.41	.35	.48	.40	.35	.46	.40	.34	.45	.39	.34	.32
8.0	.46	.38	.32	.45	.37	.31	.44	.36	.31	.42	.36	.31	.41	.35	.30	.29
9.0	.42	.34	.28	.42	.34	.28	.40	.33	.28	.39	.32	.28	.38	.32	.28	.26
10.0	.39	.31	.26	.38	.31	.26	.37	.30	.25	.36	.30	.25	.35	.29	.25	.23



C Range: 0 - 360DEG
 C Interval: 30.0DEG
 Test Speed: HIGH
 Temperature: 25.3DEG
 Operators: DAMIN
 Test Date: 2022-04-23

γ Range: 0 - 180DEG
 γ Interval: 1.0DEG
 Test System: EVERFINE GO-2000A_V1 SYSTEM V2.00.443
 Humidity: 65.0%
 Test Distance: 8.000m [K=0.7063]
 Remarks:

WEC AND CCEC

Test:U:220.60V I:0.0960A P:20.200W PF:0.9510 Freq:50.00Hz		
Lamp Flux:2185.52x1 lm		
Name: NS60-595*595-20W (Round)	Type: LED	
MFR.: Lumega Group	DIM.: 595*595mm	
	SUR.: φ540mm	

ρ _{cc}	80%			70%			50%			30%			10%			0
ρ _w	50%	30%	10%	50%	30%	10%	50%	30%	10%	50%	30%	10%	50%	30%	10%	0
ρ _{fc}	20%			20%			20%			20%			20%			0
RCR	RCR:Room Cavity Ratio						Wall Exitance Coefficients(WEC)									
0.0																
1.0	.314	.179	.057	.306	.175	.055	.292	.167	.053	.278	.161	.052	.266	.154	.050	
2.0	.294	.161	.049	.287	.158	.049	.274	.153	.047	.262	.147	.046	.251	.142	.045	
3.0	.271	.144	.043	.265	.142	.043	.254	.138	.042	.243	.133	.041	.233	.129	.040	
4.0	.250	.130	.038	.245	.128	.038	.235	.124	.037	.225	.121	.036	.216	.117	.036	
5.0	.231	.118	.034	.226	.116	.034	.217	.113	.033	.209	.110	.033	.201	.107	.032	
6.0	.214	.107	.031	.210	.106	.030	.202	.103	.030	.194	.101	.030	.187	.098	.029	
7.0	.199	.098	.028	.195	.097	.028	.188	.095	.027	.181	.093	.027	.175	.091	.027	
8.0	.186	.091	.026	.182	.090	.025	.176	.088	.025	.170	.086	.025	.164	.084	.024	
9.0	.174	.084	.024	.171	.083	.023	.165	.082	.023	.159	.080	.023	.154	.078	.023	
10.0	.164	.078	.022	.161	.078	.022	.155	.076	.021	.150	.075	.021	.145	.073	.021	

ρ _{cc}	80%			70%			50%			30%			10%			0
ρ _w	50%	30%	10%	50%	30%	10%	50%	30%	10%	50%	30%	10%	50%	30%	10%	0
ρ _{fc}	20%			20%			20%			20%			20%			0
RCR	RCR:Room Cavity Ratio						Ceiling Cavity Exitance Coefficients(CCEC)									
0.0	.207	.207	.207	.177	.177	.177	.121	.121	.121	.070	.070	.070	.022	.022	.022	
1.0	.198	.173	.151	.169	.149	.130	.116	.102	.090	.067	.059	.052	.021	.019	.017	
2.0	.190	.149	.115	.163	.128	.099	.111	.089	.069	.064	.052	.041	.021	.017	.013	
3.0	.182	.132	.091	.156	.114	.079	.107	.079	.056	.062	.046	.033	.020	.015	.011	
4.0	.174	.118	.076	.150	.102	.066	.103	.071	.046	.060	.042	.027	.019	.014	.009	
5.0	.167	.108	.065	.143	.093	.056	.099	.065	.040	.057	.038	.024	.018	.013	.008	
6.0	.160	.100	.057	.137	.086	.049	.095	.060	.035	.055	.036	.021	.018	.012	.007	
7.0	.153	.093	.051	.132	.081	.044	.091	.056	.031	.053	.033	.019	.017	.011	.006	
8.0	.147	.087	.046	.126	.076	.040	.087	.053	.029	.051	.031	.017	.016	.010	.006	
9.0	.141	.082	.043	.121	.071	.037	.084	.050	.027	.049	.030	.016	.016	.010	.005	
10.0	.135	.078	.040	.116	.068	.035	.081	.048	.025	.047	.028	.015	.015	.009	.005	

C Range: 0 - 360DEG
C Interval: 30.0DEG
Test Speed: HIGH
Temperature:25.3DEG
Operators:DAMIN
Test Date:2022-04-23

γ Range: 0 - 180DEG
γ Interval: 1.0DEG
Test System:EVERFINE GO-2000A_V1 SYSTEM V2.00.443
Humidity:65.0%
Test Distance:8.000m [K=0.7063]
Remarks:

UGR(Unified Glare Rating) Table

Test:U:220.60V I:0.0960A P:20.200W PF:0.9510 Freq:50.00Hz		
Lamp Flux:2185.52x1 lm		
Name: NS60-595*595-20W (Round)	Type: LED	
MFR.: Lumega Group	DIM.: 595*595mm	
	SUR.: φ540mm	

ceiling/cavity	0.7	0.7	0.5	0.5	0.3	0.7	0.7	0.5	0.5	0.3
walls	0.5	0.3	0.5	0.3	0.3	0.5	0.3	0.5	0.3	0.3
working plane	0.2	0.2	0.2	0.2	0.2	0.2	0.2	0.2	0.2	0.2
Room dimensions	Viewed crosswise					Viewed endwise				
x = 2H y = 2H	16.2	17.7	16.5	17.9	18.2	16.0	17.5	16.3	17.8	18.0
3H	17.7	19.0	18.0	19.3	19.6	17.5	18.8	17.8	19.1	19.4
4H	18.2	19.5	18.6	19.8	20.1	18.0	19.3	18.3	19.6	19.9
6H	18.6	19.8	18.9	20.1	20.4	18.3	19.5	18.6	19.8	20.1
8H	18.7	19.8	19.0	20.2	20.5	18.3	19.5	18.7	19.8	20.2
12H	18.7	19.8	19.1	20.2	20.5	18.3	19.5	18.7	19.8	20.2
4H 2H	16.7	18.1	17.1	18.3	18.7	16.6	17.9	17.0	18.2	18.5
3H	18.4	19.5	18.8	19.9	20.2	18.2	19.4	18.6	19.7	20.0
4H	19.1	20.1	19.5	20.5	20.8	18.8	19.9	19.2	20.2	20.6
6H	19.5	20.5	19.9	20.8	21.3	19.2	20.2	19.7	20.6	21.0
8H	19.6	20.5	20.1	20.9	21.4	19.3	20.2	19.8	20.6	21.0
12H	19.7	20.5	20.2	20.9	21.4	19.4	20.2	19.8	20.6	21.0
8H 4H	19.3	20.1	19.7	20.5	21.0	19.1	19.9	19.5	20.3	20.8
6H	19.8	20.6	20.3	21.0	21.5	19.6	20.3	20.0	20.7	21.2
8H	20.0	20.7	20.5	21.1	21.6	19.7	20.4	20.2	20.8	21.3
12H	20.2	20.7	20.7	21.2	21.7	19.8	20.4	20.3	20.8	21.4
12H 4H	19.2	20.0	19.7	20.5	20.9	19.1	19.8	19.5	20.3	20.7
6H	19.9	20.5	20.4	21.0	21.5	19.6	20.2	20.1	20.7	21.2
8H	20.1	20.6	20.6	21.1	21.7	19.8	20.3	20.3	20.8	21.3
Variations with the observer position at spacings(CIE Pub.117):										
S = 1.0H	+ 0.2 / - 0.2					+ 0.2 / - 0.2				
1.5H	+ 0.2 / - 0.3					+ 0.2 / - 0.3				
2.0H	+ 0.2 / - 0.3					+ 0.2 / - 0.3				

CIE Pub.117, 2186 lm Total Lamp Luminous Flux Corrected (8log(F/F0) = 2.7)
 Area: 0.229 m2

C Range: 0 - 360DEG
C Interval: 30.0DEG
Test Speed: HIGH
Temperature:25.3DEG
Operators:DAMIN
Test Date:2022-04-23

γ Range: 0 - 180DEG
γ Interval: 1.0DEG
Test System:EVERFINE GO-2000A_V1 SYSTEM V2.00.443
Humidity:65.0%
Test Distance:8.000m [K=0.7063]
Remarks:

UTILIZATION FACTORS TABLE

Test:U:220.60V I:0.0960A P:20.200W PF:0.9510 Freq:50.00Hz Lamp Flux:2185.52x1 lm		
Name: NS60-595*595-20W (Round)	Type: LED	
MFR.: Lumega Group	DIM.: 595*595mm	
	SUR.: φ540mm	

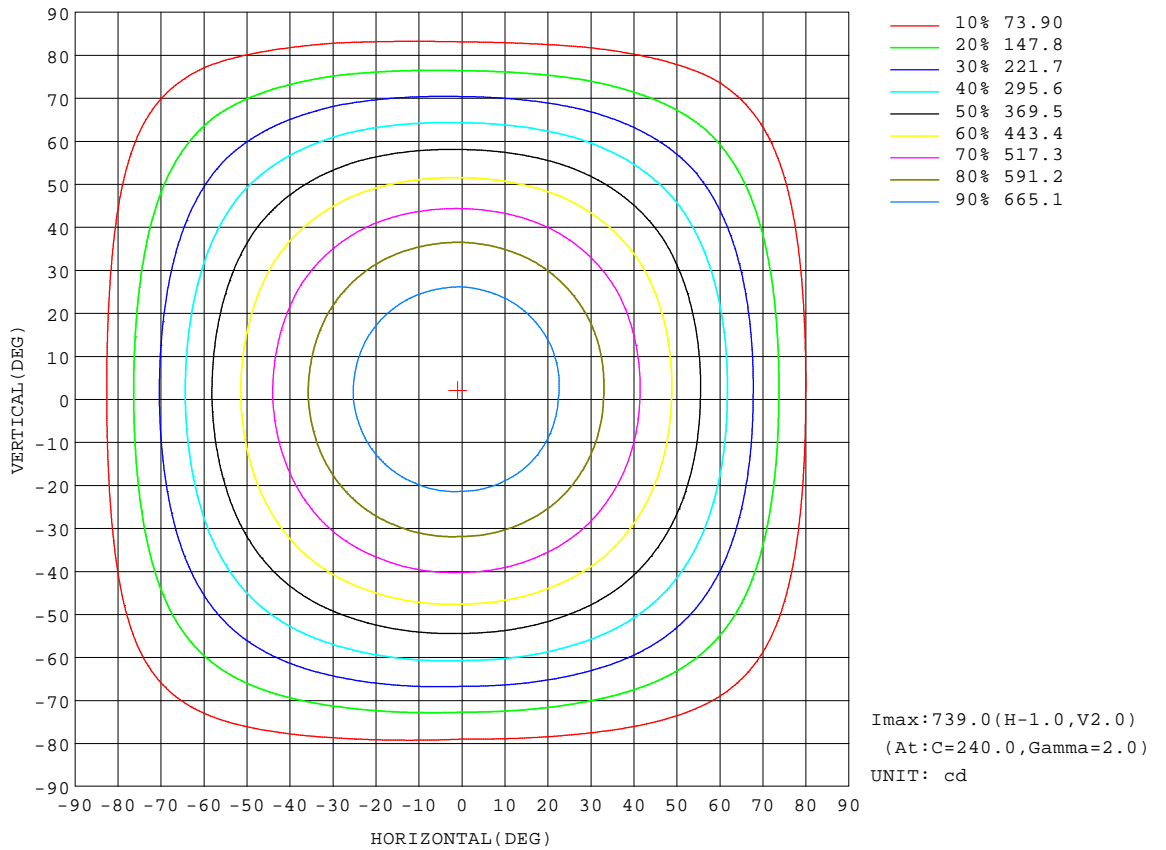
REFLECTANCE										
Ceiling	0.8	0.8	0.8	0.7	0.7	0.7	0.5	0.5	0.5	0
Walls	0.7	0.5	0.3	0.7	0.5	0.3	0.7	0.5	0.3	0
Working plane	0.2	0.2	0.2	0.2	0.2	0.2	0.2	0.2	0.2	0
ROOM INDEX	UTILIZATION FACTORS(PERCENT) $k(RI) \times RCR = 5$									
k = 0.60	57	45	38	56	45	38	54	44	37	31
0.80	66	55	47	65	54	47	63	53	47	40
1.00	75	64	56	74	63	56	71	64	55	48
1.25	82	71	64	80	70	64	77	69	63	55
1.50	87	77	70	85	76	69	82	74	68	60
2.00	94	85	79	92	84	78	88	81	76	68
2.50	98	90	84	96	88	83	91	85	81	72
3.00	101	94	89	99	93	87	95	89	85	76
4.00	105	100	95	103	98	93	98	94	90	81
5.00	108	103	99	105	101	97	100	97	94	84
ROOM INDEX	UF(total)									Direct
According to DIN EN 13032-2 2004			Suspended					SHRNM = 1.25		

C Range: 0 - 360DEG
C Interval: 30.0DEG
Test Speed: HIGH
Temperature:25.3DEG
Operators:DAMIN
Test Date:2022-04-23

γ Range: 0 - 180DEG
γ Interval: 1.0DEG
Test System:EVERFINE GO-2000A_V1 SYSTEM V2.00.443
Humidity:65.0%
Test Distance:8.000m [K=0.7063]
Remarks:

ISOCANDELA DIAGRAM

Test:U:220.60V I:0.0960A P:20.200W PF:0.9510 Freq:50.00Hz		
Lamp Flux:2185.52x1 lm		
Name: NS60-595*595-20W (Round)	Type: LED	
MFR.: Lumega Group	DIM.: 595*595mm	
	SUR.: φ540mm	



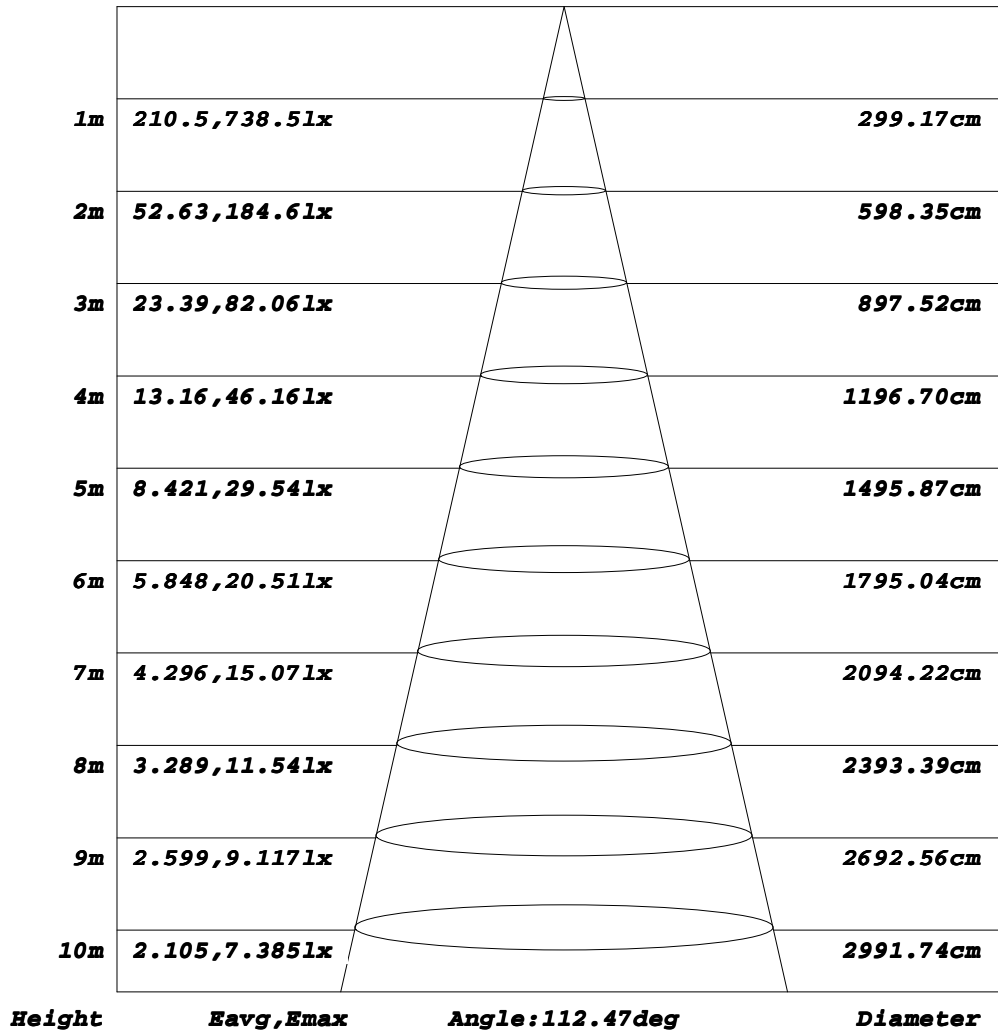
C Range: 0 - 360DEG
C Interval: 30.0DEG
Test Speed: HIGH
Temperature: 25.3DEG
Operators: DAMIN
Test Date: 2022-04-23

γ Range: 0 - 180DEG
γ Interval: 1.0DEG
Test System: EVERFINE GO-2000A_V1 SYSTEM V2.00.443
Humidity: 65.0%
Test Distance: 8.000m [K=0.7063]
Remarks:

AAI Figure

Test:U:220.60V I:0.0960A P:20.200W PF:0.9510 Freq:50.00Hz		
Lamp Flux:2185.52x1 lm		
Name: NS60-595*595-20W (Round)	Type: LED	
MFR.: Lumega Group	DIM.: 595*595mm	
	SUR.: φ540mm	

Flux out:1568 lm



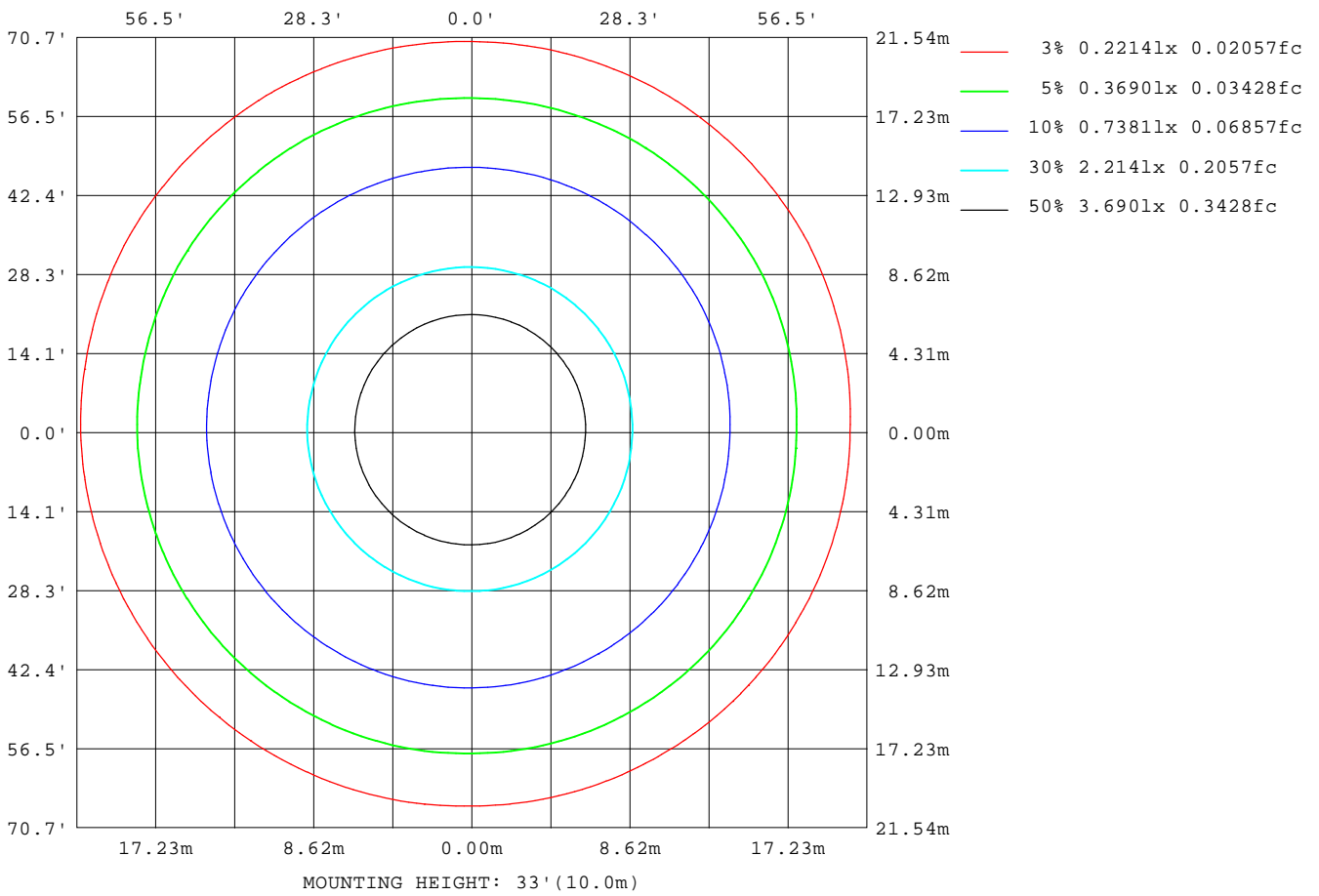
Note: The Curves indicate the illuminated area and the average illumination when the luminaire is at different distance.

C Range: 0 - 360DEG
C Interval: 30.0DEG
Test Speed: HIGH
Temperature: 25.3DEG
Operators: DAMIN
Test Date: 2022-04-23

γ Range: 0 - 180DEG
γ Interval: 1.0DEG
Test System: EVERFINE GO-2000A_V1 SYSTEM V2.00.443
Humidity: 65.0%
Test Distance: 8.000m [K=0.7063]
Remarks:

ISOLUX DIAGRAM

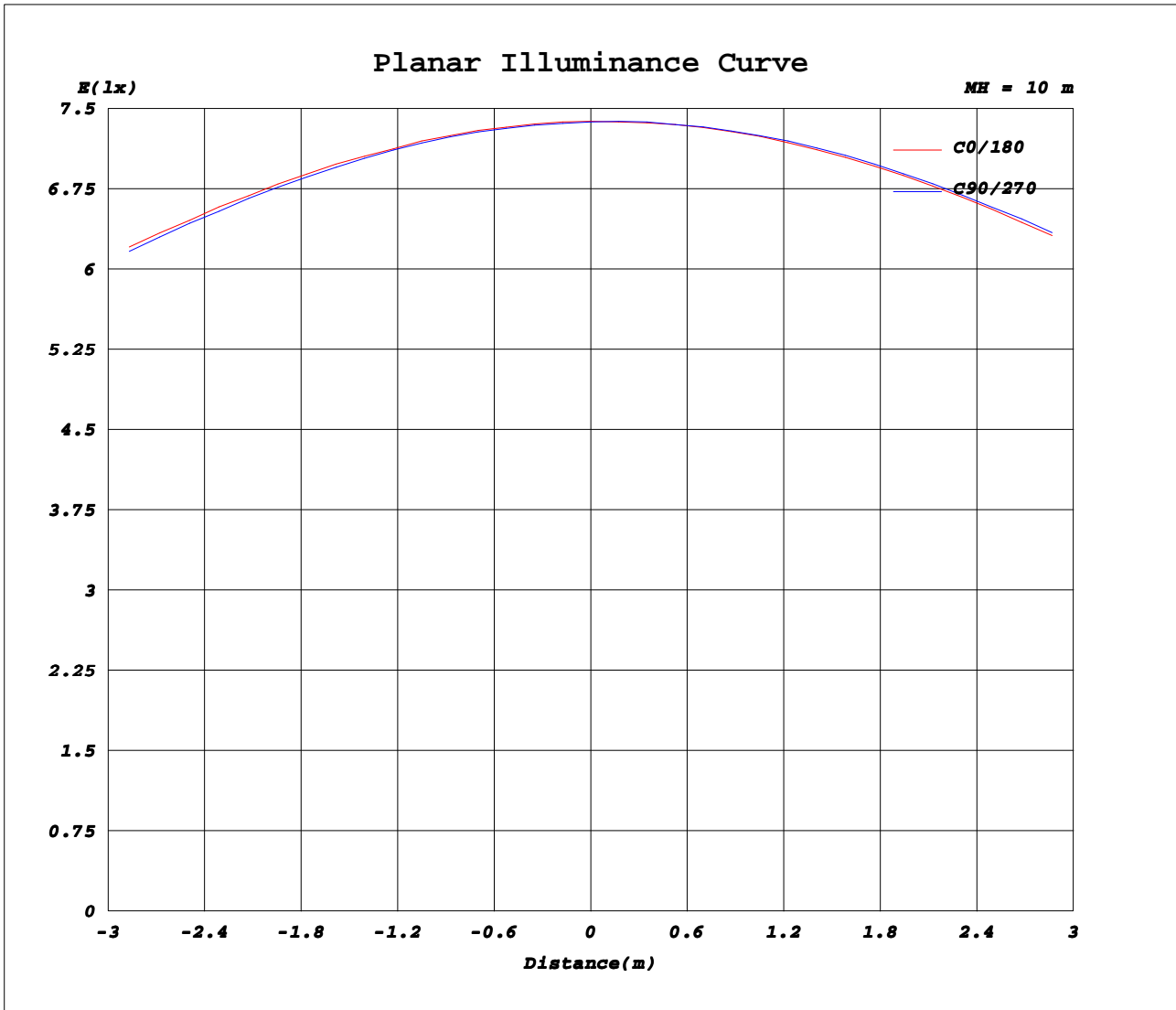
Test:U:220.60V I:0.0960A P:20.200W PF:0.9510 Freq:50.00Hz		
Lamp Flux:2185.52x1 lm		
Name: NS60-595*595-20W (Round)	Type: LED	
MFR.: Lumega Group	DIM.: 595*595mm	
	SUR.: φ540mm	



C Range: 0 - 360DEG
C Interval: 30.0DEG
Test Speed: HIGH
Temperature: 25.3DEG
Operators: DAMIN
Test Date: 2022-04-23

γ Range: 0 - 180DEG
γ Interval: 1.0DEG
Test System: EVERFINE GO-2000A_V1 SYSTEM V2.00.443
Humidity: 65.0%
Test Distance: 8.000m [K=0.7063]
Remarks:

Planar Illuminance Curve



C Range: 0 - 360DEG
C Interval: 30.0DEG
Test Speed: HIGH
Temperature: 25.3DEG
Operators: DAMIN
Test Date: 2022-04-23

γ Range: 0 - 180DEG
γ Interval: 1.0DEG
Test System: EVERFINE GO-2000A_V1 SYSTEM V2.00.443
Humidity: 65.0%
Test Distance: 8.000m [K=0.7063]
Remarks:

LUMINOUS DISTRIBUTION INTENSITY DATA

Test:U:220.60V I:0.0960A P:20.200W PF:0.9510 Freq:50.00Hz Lamp Flux:2185.52x1 lm		
Name: NS60-595*595-20W (Round)	Type: LED	
MFR.: Lumega Group	DIM.: 595*595mm	
	SUR.: φ540mm	

Table--1

UNIT: cd

C (DEG) \ γ (DEG)	0	30	60	90	120	150	180	210	240	270	300	330							
0	738	738	738	737	738	738	738	738	738	737	738	738							
5	733	732	732	732	733	735	737	738	738	737	736	734							
10	721	719	718	718	721	725	729	731	731	731	728	725							
15	703	700	698	699	702	708	714	717	719	718	714	709							
20	679	675	673	674	678	685	693	697	698	697	693	687							
25	650	645	642	643	648	657	667	671	672	671	666	659							
30	614	608	606	607	613	624	635	640	642	641	635	625							
35	574	568	565	565	574	586	597	603	605	603	596	586							
40	530	522	518	520	528	541	556	562	563	560	554	544							
45	481	473	469	471	479	492	507	515	515	511	506	497							
50	430	421	417	419	427	442	459	466	466	460	456	447							
55	375	366	362	363	372	388	405	413	412	404	401	392							
60	316	310	305	304	315	332	348	356	354	346	343	335							
65	256	249	245	244	256	272	288	297	296	287	284	275							
70	193	188	183	182	195	212	226	236	235	226	223	213							
75	132	127	122	121	134	150	164	175	174	164	162	152							
80	73.2	70.4	65.8	63.5	76.2	91.2	104	114	114	105	103	94.2							
85	27.5	24.6	21.6	20.7	28.8	39.3	49.4	58.9	60.9	55.6	52.5	43.9							
90	4.13	4.38	4.37	4.25	4.06	5.96	10.1	15.1	17.5	16.0	11.5	7.11							
95	4.70	4.81	4.75	4.62	4.71	5.14	5.71	5.69	5.55	5.48	5.65	5.46							
100	5.27	5.30	5.28	5.21	5.11	5.50	6.19	6.16	6.01	5.97	6.15	5.98							
105	5.80	5.82	5.81	5.78	5.60	5.95	6.67	6.64	6.51	6.49	6.64	6.47							
110	6.26	6.29	6.30	6.28	6.10	6.42	7.10	7.08	6.98	6.98	7.11	6.92							
115	6.70	6.73	6.75	6.74	6.55	6.86	7.51	7.49	7.41	7.42	7.53	7.34							
120	7.15	7.18	7.20	7.20	7.01	7.29	7.93	7.91	7.83	7.85	7.96	7.77							
125	7.60	7.62	7.64	7.64	7.46	7.73	8.34	8.33	8.26	8.28	8.38	8.20							
130	8.05	8.06	8.08	8.09	7.90	8.16	8.76	8.74	8.67	8.70	8.78	8.60							
135	8.47	8.49	8.51	8.50	8.33	8.58	9.14	9.13	9.07	9.09	9.17	9.00							
140	8.90	8.93	8.95	8.93	8.78	9.01	9.53	9.51	9.46	9.49	9.56	9.40							
145	9.36	9.39	9.41	9.40	9.25	9.44	9.90	9.89	9.84	9.86	9.93	9.79							
150	9.85	9.88	9.90	9.90	9.76	9.89	10.3	10.3	10.2	10.2	10.3	10.2							
155	10.4	10.3	10.4	10.4	10.3	10.3	10.6	10.7	10.6	10.6	10.7	10.6							
160	10.8	10.8	10.8	10.9	10.7	10.8	11.0	11.0	11.0	11.0	11.0	10.9							
165	11.1	11.1	11.2	11.2	11.1	11.1	11.3	11.3	11.3	11.3	11.3	11.2							
170	11.3	11.3	11.4	11.4	11.3	11.3	11.5	11.5	11.5	11.4	11.5	11.4							
175	11.4	11.5	11.5	11.5	11.6	11.6	11.6	11.6	11.6	11.6	11.6	11.5							
180	11.5	11.6	11.6	11.6	11.6	11.6	11.5	11.6	11.6	11.6	11.6	11.6							

C Range: 0 - 360DEG
C Interval: 30.0DEG
Test Speed: HIGH
Temperature: 25.3DEG
Operators: DAMIN
Test Date: 2022-04-23

γ Range: 0 - 180DEG
γ Interval: 1.0DEG
Test System: EVERFINE GO-2000A_V1 SYSTEM V2.00.443
Humidity: 65.0%
Test Distance: 8.000m [K=0.7063]
Remarks: