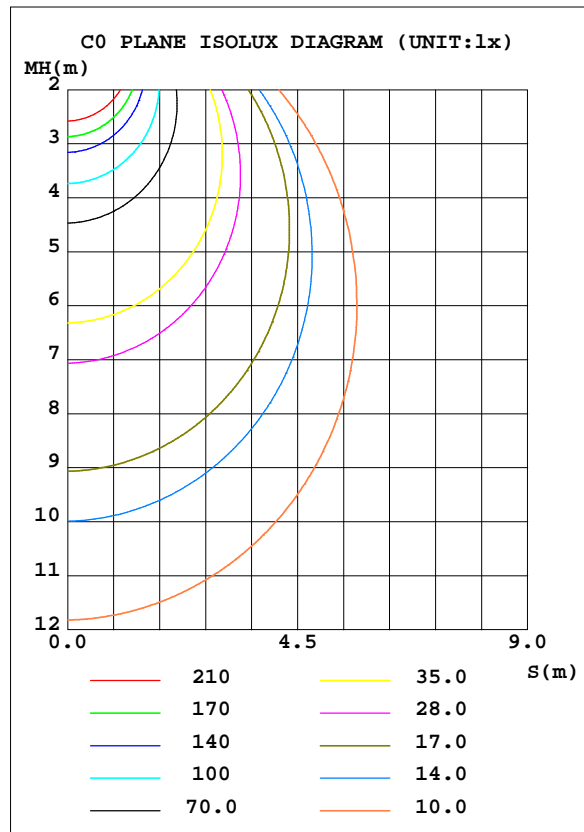
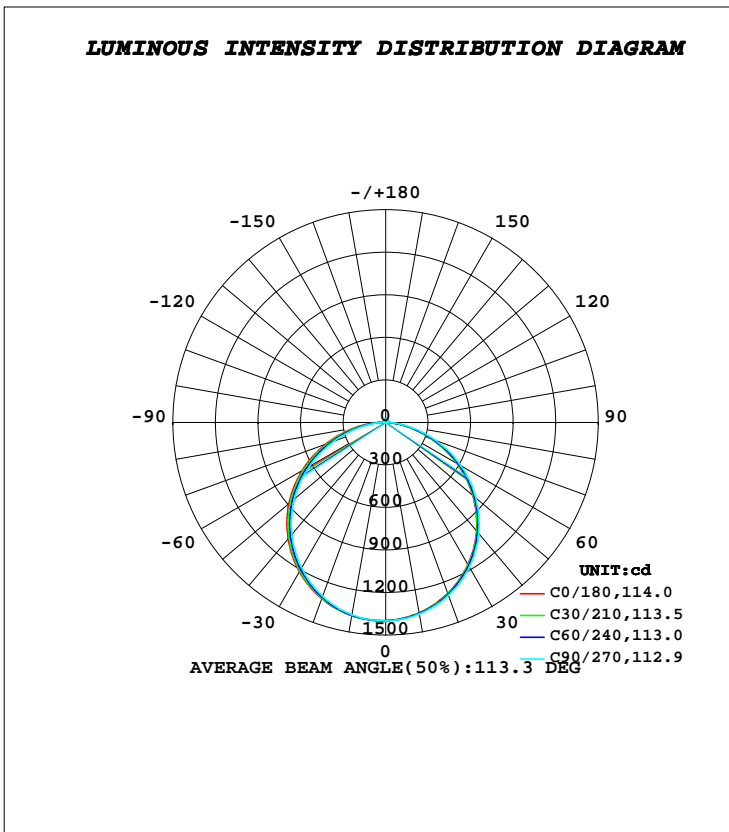


LUMINAIRE PHOTOMETRIC TEST REPORT

Test:U:220.60V I:0.1460A P:30.100W PF:0.9360 Freq:50.00Hz		
Lamp Flux:4141.56x1 lm		
Name: NS60-595*595-30W	Type: LED	
MFR.: Lumega Group	DIM.: 595*595mm	
	SUR.: 550*550mm	

DATA OF LAMP		PHOTOMETRIC DATA Eff: 137.59 lm/W			
MODEL		I _{max} (cd)	1399	S/MH(C0/180)	1.24
NOMINAL POWER(W)	30	LOR(%)	100.0	S/MH(C90/270)	1.25
RATED VOLTAGE(V)	220	TOTAL FLUX(lm)	4141.6	η UP, DN(C0-180)	1.1, 48.1
NOMINAL FLUX(lm)	4141.56	CIE CLASS	DIRECT	η UP, DN(C180-360)	1.2, 49.6
LAMPS INSIDE	1	η up(%)	2.3	CIBSE SHR NOM	1.25
TEST VOLTAGE(V)	220	η down(%)	97.7	CIBSE SHR MAX	1.35



C Range: 0 - 360DEG
C Interval: 30.0DEG
Test Speed: HIGH
Temperature:25.3DEG
Operators:DAMIN
Test Date:2022-04-23

γ Range: 0 - 180DEG
γ Interval: 1.0DEG
Test System:EVERFINE GO-2000A_V1 SYSTEM V2.00.443
Humidity:65.0%
Test Distance:8.000m [K=0.7063]
Remarks:

ZONAL FLUX DIAGRAM

ZONAL FLUX DIAGRAM:

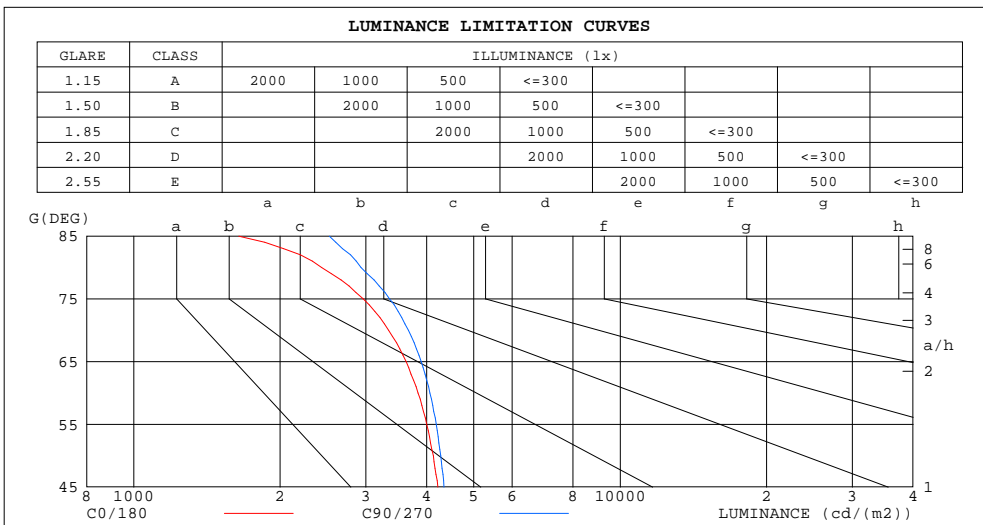
γ	C0	C45	C90	C135	C180	C225	C270	C315	γ	Φ zone	Φ total	%lum, lamp
10	1363	1366	1371	1379	1383	1381	1377	1370	0- 10	132.3	132.3	3.19,3.19
20	1282	1287	1297	1311	1322	1316	1304	1293	10- 20	379.2	511.5	12.4,12.4
30	1159	1165	1178	1200	1217	1204	1186	1171	20- 30	575.4	1087	26.2,26.2
40	997.1	1005	1021	1050	1071	1054	1030	1011	30- 40	695.5	1782	43,43
50	803.3	812.2	832.2	865.0	893.8	870.0	843.6	818.2	40- 50	724.4	2507	60.5,60.5
60	581.0	591.2	614.5	651.1	681.5	656.1	624.4	596.8	50- 60	657.3	3164	76.4,76.4
70	345.9	355.8	380.0	418.1	450.7	424.1	387.8	361.8	60- 70	502.8	3667	88.5,88.5
80	127.9	137.3	154.0	191.5	222.4	199.1	165.9	145.6	70- 80	291.5	3958	95.6,95.6
90	8.211	8.717	9.037	22.01	39.37	29.67	16.33	10.14	80- 90	89.82	4048	97.7,97.7
100	10.21	10.02	9.580	9.918	11.42	11.49	11.55	11.72	90-100	11.78	4060	98,98
110	11.92	11.76	11.61	11.62	13.23	13.36	13.47	13.53	100-110	12.33	4072	98.3,98.3
120	13.62	13.50	13.43	13.39	14.86	15.03	15.19	15.18	110-120	13.30	4086	98.6,98.6
130	15.44	15.30	15.27	15.21	16.57	16.69	16.85	16.80	120-130	13.57	4099	99,99
140	17.22	17.13	17.10	17.08	18.23	18.37	18.45	18.43	130-140	13.05	4112	99.3,99.3
150	19.17	19.08	19.07	18.98	19.81	20.02	20.01	20.02	140-150	11.68	4124	99.6,99.6
160	20.94	20.80	20.90	20.72	21.39	21.44	21.60	21.41	150-160	9.406	4133	99.8,99.8
170	21.97	21.99	22.04	21.89	22.08	22.17	22.24	22.15	160-170	6.119	4139	99.9,99.9
180	22.33	22.43	22.45	22.35	22.32	22.43	22.45	22.36	170-180	2.122	4142	100,100
DEG	LUMINOUS INTENSITY:cd									UNIT:lm		

C Range: 0 - 360DEG
C Interval: 30.0DEG
Test Speed: HIGH
Temperature:25.3DEG
Operators:DAMIN
Test Date:2022-04-23

γ Range: 0 - 180DEG
 γ Interval: 1.0DEG
Test System:EVERFINE GO-2000A_V1 SYSTEM V2.00.443
Humidity:65.0%
Test Distance:8.000m [K=0.7063]
Remarks:

LUMINANCE LIMITATION CURVES

Test:U:220.60V I:0.1460A P:30.100W PF:0.9360 Freq:50.00Hz		
Lamp Flux:4141.56x1 lm		
Name: NS60-595*595-30W	Type: LED	
MFR.: Lumega Group	DIM.: 595*595mm	
	SUR.: 550*550mm	



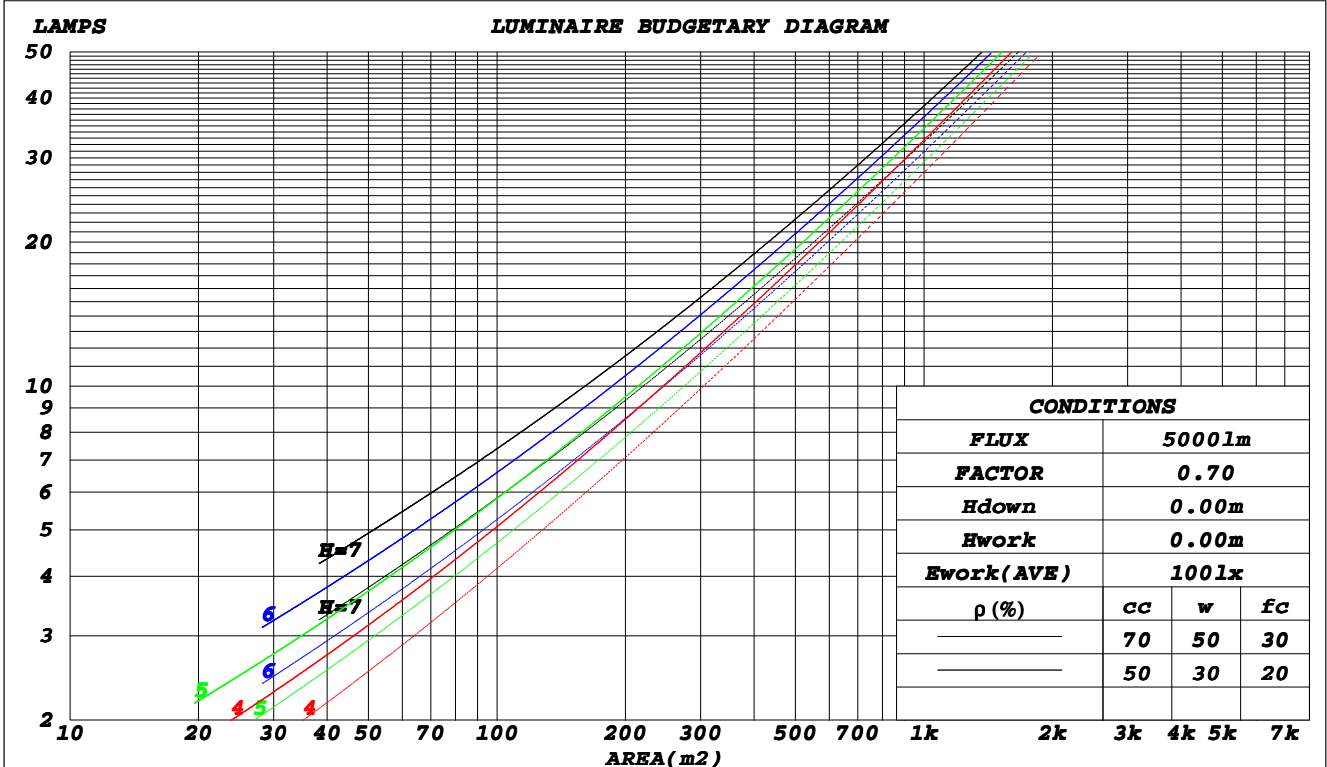
C Range: 0 - 360DEG
C Interval: 30.0DEG
Test Speed: HIGH
Temperature: 25.3DEG
Operators: DAMIN
Test Date: 2022-04-23

γ Range: 0 - 180DEG
γ Interval: 1.0DEG
Test System: EVERFINE GO-2000A_V1 SYSTEM V2.00.443
Humidity: 65.0%
Test Distance: 8.000m [K=0.7063]
Remarks:

CU AND LUMINAIRE BUDGETARY ESTIMATE DIAGRAM

Test:U:220.60V I:0.1460A P:30.100W PF:0.9360 Freq:50.00Hz		
Lamp Flux:4141.56x1 lm		
Name: NS60-595*595-30W	Type: LED	
MFR.: Lumega Group	DIM.: 595*595mm	
	SUR.: 550*550mm	

ρ_{cc}	80%			70%			50%			30%			10%			0
ρ_w	50%	30%	10%	50%	30%	10%	50%	30%	10%	50%	30%	10%	50%	30%	10%	0
ρ_{fc}	20%			20%			20%			20%			20%			0
RCR	RCR:Room Cavity Ratio									Coefficients of Utilization(CU)						
0.0	1.19	1.19	1.19	1.15	1.15	1.15	1.10	1.10	1.10	1.05	1.05	1.05	.00	.00	.00	.98
1.0	1.03	.99	.95	1.01	.97	.93	.96	.93	.90	.92	.89	.87	.88	.86	.84	.81
2.0	.90	.83	.77	.88	.81	.76	.84	.78	.74	.80	.76	.72	.77	.73	.70	.68
3.0	.79	.70	.64	.77	.69	.63	.74	.67	.62	.71	.65	.60	.68	.63	.59	.57
4.0	.70	.61	.54	.68	.60	.53	.65	.58	.52	.63	.56	.51	.60	.55	.51	.48
5.0	.62	.53	.46	.61	.52	.46	.58	.51	.45	.56	.50	.45	.54	.48	.44	.42
6.0	.56	.47	.40	.55	.46	.40	.53	.45	.40	.51	.44	.39	.49	.43	.39	.36
7.0	.51	.42	.36	.50	.41	.35	.48	.40	.35	.46	.40	.35	.45	.39	.34	.32
8.0	.46	.38	.32	.45	.37	.32	.44	.36	.31	.42	.36	.31	.41	.35	.31	.29
9.0	.42	.34	.28	.42	.34	.28	.40	.33	.28	.39	.33	.28	.38	.32	.28	.26
10.0	.39	.31	.26	.38	.31	.26	.37	.30	.25	.36	.30	.25	.35	.29	.25	.23



C Range: 0 - 360DEG
 C Interval: 30.0DEG
 Test Speed: HIGH
 Temperature: 25.3DEG
 Operators: DAMIN
 Test Date: 2022-04-23

γ Range: 0 - 180DEG
 γ Interval: 1.0DEG
 Test System: EVERFINE GO-2000A_V1 SYSTEM V2.00.443
 Humidity: 65.0%
 Test Distance: 8.000m [K=0.7063]
 Remarks:

WEC AND CCEC

Test:U:220.60V I:0.1460A P:30.100W PF:0.9360 Freq:50.00Hz		
Lamp Flux:4141.56x1 lm		
Name: NS60-595*595-30W	Type: LED	
MFR.: Lumega Group	DIM.: 595*595mm	
	SUR.: 550*550mm	

ρ_{cc}	80%			70%			50%			30%			10%			0
ρ_w	50%	30%	10%	50%	30%	10%	50%	30%	10%	50%	30%	10%	50%	30%	10%	0
ρ_{fc}	20%			20%			20%			20%			20%			0
RCR	RCR:Room Cavity Ratio						Wall Exitance Coefficients(WEC)									
0.0																
1.0	.313	.178	.056	.306	.174	.055	.291	.167	.053	.278	.160	.051	.265	.154	.050	
2.0	.293	.161	.049	.287	.158	.049	.274	.152	.047	.262	.147	.046	.251	.142	.045	
3.0	.271	.144	.043	.265	.142	.043	.253	.137	.042	.243	.133	.041	.233	.129	.040	
4.0	.250	.130	.038	.244	.128	.038	.234	.124	.037	.225	.121	.036	.216	.117	.036	
5.0	.231	.118	.034	.226	.116	.034	.217	.113	.033	.208	.110	.033	.200	.107	.032	
6.0	.214	.107	.031	.210	.106	.030	.201	.103	.030	.194	.101	.030	.187	.098	.029	
7.0	.199	.098	.028	.195	.097	.028	.188	.095	.027	.181	.093	.027	.174	.091	.027	
8.0	.186	.091	.026	.182	.090	.025	.176	.088	.025	.169	.086	.025	.164	.084	.024	
9.0	.174	.084	.023	.171	.083	.023	.165	.082	.023	.159	.080	.023	.154	.078	.023	
10.0	.164	.078	.022	.161	.078	.022	.155	.076	.021	.150	.075	.021	.145	.073	.021	

ρ_{cc}	80%			70%			50%			30%			10%			0
ρ_w	50%	30%	10%	50%	30%	10%	50%	30%	10%	50%	30%	10%	50%	30%	10%	0
ρ_{fc}	20%			20%			20%			20%			20%			0
RCR	RCR:Room Cavity Ratio						Ceiling Cavity Exitance Coefficients(CCEC)									
0.0	.208	.208	.208	.177	.177	.177	.121	.121	.121	.070	.070	.070	.022	.022	.022	
1.0	.198	.173	.151	.169	.149	.130	.116	.102	.090	.067	.059	.052	.021	.019	.017	
2.0	.190	.149	.115	.163	.129	.100	.111	.089	.069	.064	.052	.041	.021	.017	.013	
3.0	.182	.132	.092	.156	.114	.079	.107	.079	.056	.062	.046	.033	.020	.015	.011	
4.0	.175	.119	.076	.150	.102	.066	.103	.071	.046	.060	.042	.027	.019	.014	.009	
5.0	.167	.108	.065	.144	.094	.056	.099	.065	.040	.057	.038	.024	.018	.013	.008	
6.0	.160	.100	.057	.138	.087	.049	.095	.061	.035	.055	.036	.021	.018	.012	.007	
7.0	.153	.093	.051	.132	.081	.044	.091	.057	.031	.053	.033	.019	.017	.011	.006	
8.0	.147	.087	.046	.126	.076	.041	.087	.053	.029	.051	.031	.017	.016	.010	.006	
9.0	.141	.082	.043	.121	.072	.038	.084	.050	.027	.049	.030	.016	.016	.010	.005	
10.0	.135	.078	.040	.116	.068	.035	.081	.048	.025	.047	.028	.015	.015	.009	.005	

C Range: 0 - 360DEG
C Interval: 30.0DEG
Test Speed: HIGH
Temperature:25.3DEG
Operators:DAMIN
Test Date:2022-04-23

γ Range: 0 - 180DEG
 γ Interval: 1.0DEG
Test System:EVERFINE GO-2000A_V1 SYSTEM V2.00.443
Humidity:65.0%
Test Distance:8.000m [K=0.7063]
Remarks:

UGR(Unified Glare Rating) Table

Test:U:220.60V I:0.1460A P:30.100W PF:0.9360 Freq:50.00Hz		
Lamp Flux:4141.56x1 lm		
Name: NS60-595*595-30W	Type: LED	
MFR.: Lumega Group	DIM.: 595*595mm	
	SUR.: 550*550mm	

ceiling/cavity	0.7	0.7	0.5	0.5	0.3	0.7	0.7	0.5	0.5	0.3
walls	0.5	0.3	0.5	0.3	0.3	0.5	0.3	0.5	0.3	0.3
working plane	0.2	0.2	0.2	0.2	0.2	0.2	0.2	0.2	0.2	0.2
Room dimensions	Viewed crosswise					Viewed endwise				
x = 2H y = 2H	17.4	18.9	17.7	19.1	19.4	17.6	19.1	17.9	19.3	19.6
3H	18.8	20.2	19.1	20.4	20.7	19.1	20.5	19.4	20.7	21.0
4H	19.3	20.6	19.6	20.9	21.2	19.7	21.0	20.0	21.3	21.6
6H	19.6	20.8	20.0	21.2	21.5	20.0	21.3	20.4	21.6	21.9
8H	19.7	20.9	20.1	21.2	21.5	20.2	21.4	20.5	21.7	22.0
12H	19.7	20.9	20.1	21.2	21.5	20.2	21.4	20.6	21.7	22.1
4H 2H	18.0	19.3	18.3	19.6	19.9	18.1	19.4	18.5	19.7	20.0
3H	19.5	20.7	19.9	21.0	21.4	19.8	20.9	20.2	21.3	21.6
4H	20.2	21.2	20.6	21.6	22.0	20.5	21.5	20.9	21.9	22.3
6H	20.6	21.5	21.0	21.9	22.3	21.0	21.9	21.4	22.3	22.7
8H	20.7	21.6	21.2	22.0	22.4	21.2	22.0	21.6	22.4	22.9
12H	20.8	21.6	21.2	22.0	22.4	21.3	22.1	21.7	22.5	22.9
8H 4H	20.4	21.3	20.8	21.7	22.1	20.7	21.5	21.1	22.0	22.4
6H	21.0	21.7	21.4	22.1	22.6	21.3	22.0	21.8	22.5	23.0
8H	21.1	21.8	21.6	22.2	22.7	21.6	22.2	22.1	22.7	23.2
12H	21.2	21.8	21.8	22.3	22.8	21.7	22.3	22.3	22.8	23.3
12H 4H	20.4	21.2	20.9	21.6	22.1	20.7	21.5	21.1	21.9	22.4
6H	21.0	21.6	21.5	22.1	22.6	21.4	22.0	21.8	22.5	23.0
8H	21.2	21.8	21.7	22.2	22.8	21.6	22.2	22.1	22.7	23.2
Variations with the observer position at spacings(CIE Pub.117):										
S = 1.0H	+ 0.2 / - 0.2					+ 0.2 / - 0.2				
1.5H	+ 0.2 / - 0.3					+ 0.2 / - 0.3				
2.0H	+ 0.2 / - 0.3					+ 0.2 / - 0.3				

CIE Pub.117, 4142 lm Total Lamp Luminous Flux Corrected (8log(F/F0) = 4.9)
 Area: 0.3025 m2

C Range: 0 - 360DEG
C Interval: 30.0DEG
Test Speed: HIGH
Temperature:25.3DEG
Operators:DAMIN
Test Date:2022-04-23

γ Range: 0 - 180DEG
γ Interval: 1.0DEG
Test System:EVERFINE GO-2000A_V1 SYSTEM V2.00.443
Humidity:65.0%
Test Distance:8.000m [K=0.7063]
Remarks:

UTILIZATION FACTORS TABLE

Test:U:220.60V I:0.1460A P:30.100W PF:0.9360 Freq:50.00Hz		
Lamp Flux:4141.56x1 lm		
Name: NS60-595*595-30W	Type: LED	
MFR.: Lumega Group	DIM.: 595*595mm	
	SUR.: 550*550mm	

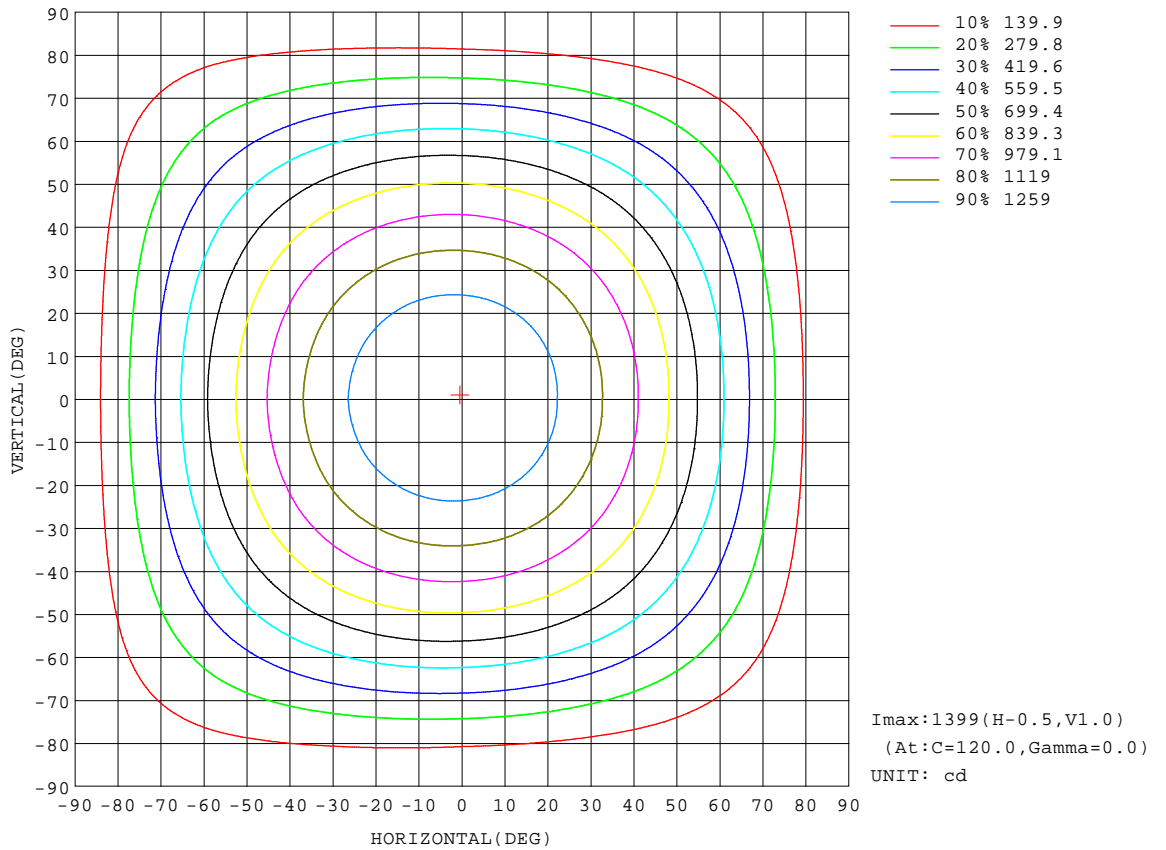
REFLECTANCE										
Ceiling	0.8	0.8	0.8	0.7	0.7	0.7	0.5	0.5	0.5	0
Walls	0.7	0.5	0.3	0.7	0.5	0.3	0.7	0.5	0.3	0
Working plane	0.2	0.2	0.2	0.2	0.2	0.2	0.2	0.2	0.2	0
ROOM INDEX	UTILIZATION FACTORS(PERCENT) $k(RI) \times RCR = 5$									
k = 0.60	57	45	38	56	45	38	54	44	38	31
0.80	67	55	47	65	54	47	63	53	47	40
1.00	75	64	56	74	63	56	71	64	55	48
1.25	82	71	64	80	71	64	78	69	63	55
1.50	87	77	70	85	76	69	82	74	68	60
2.00	94	85	79	92	84	78	88	81	76	68
2.50	98	90	84	96	88	83	92	86	81	72
3.00	101	94	89	99	93	87	95	89	85	76
4.00	105	100	95	103	98	93	98	94	90	81
5.00	108	103	99	105	101	97	100	97	94	84
ROOM INDEX	UF(total)									Direct
According to DIN EN 13032-2 2004			Suspended					SHRNM = 1.25		

C Range: 0 - 360DEG
C Interval: 30.0DEG
Test Speed: HIGH
Temperature:25.3DEG
Operators:DAMIN
Test Date:2022-04-23

γ Range: 0 - 180DEG
 γ Interval: 1.0DEG
Test System:EVERFINE GO-2000A_V1 SYSTEM V2.00.443
Humidity:65.0%
Test Distance:8.000m [K=0.7063]
Remarks:

ISOCANDELA DIAGRAM

Test:U:220.60V I:0.1460A P:30.100W PF:0.9360 Freq:50.00Hz		
Lamp Flux:4141.56x1 lm		
Name: NS60-595*595-30W	Type: LED	
MFR.: Lumega Group	DIM.: 595*595mm	
	SUR.: 550*550mm	



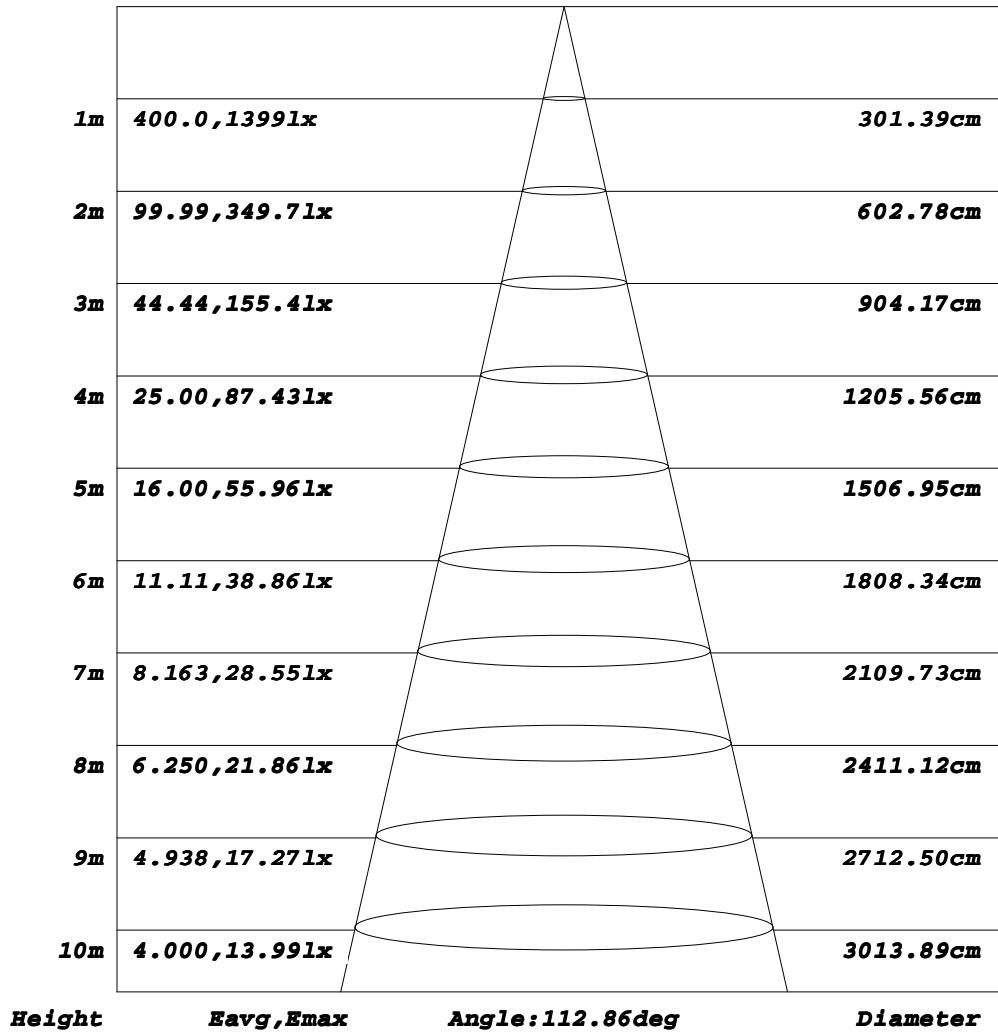
C Range: 0 - 360DEG
C Interval: 30.0DEG
Test Speed: HIGH
Temperature: 25.3DEG
Operators: DAMIN
Test Date: 2022-04-23

γ Range: 0 - 180DEG
γ Interval: 1.0DEG
Test System: EVERFINE GO-2000A_V1 SYSTEM V2.00.443
Humidity: 65.0%
Test Distance: 8.000m [K=0.7063]
Remarks:

AAI Figure

Test:U:220.60V I:0.1460A P:30.100W PF:0.9360 Freq:50.00Hz		
Lamp Flux:4141.56x1 lm		
Name: NS60-595*595-30W	Type: LED	
MFR.: Lumega Group	DIM.: 595*595mm	
	SUR.: 550*550mm	

Flux out:2980 lm



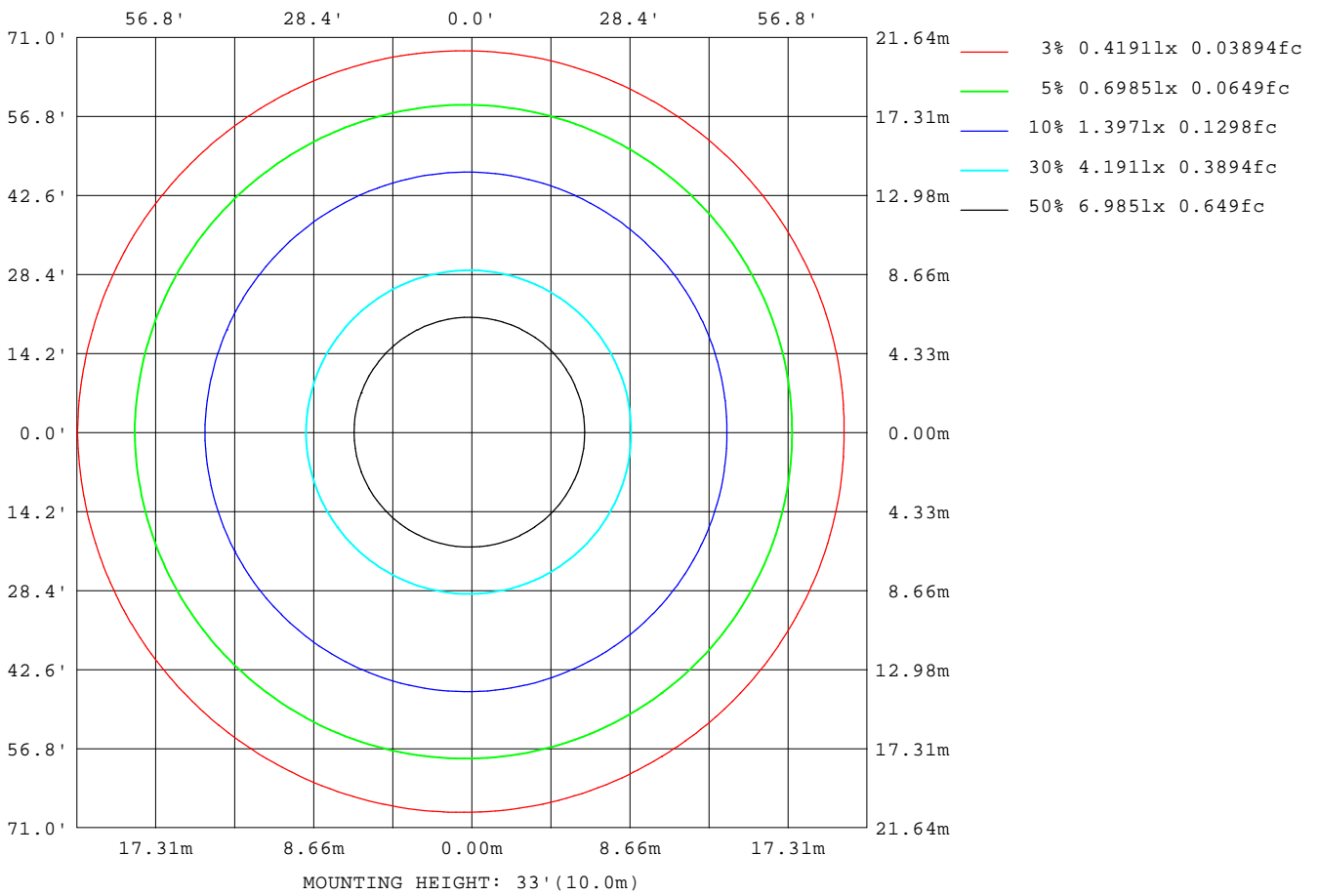
Note: The Curves indicate the illuminated area and the average illumination when the luminaire is at different distance.

C Range: 0 - 360DEG
C Interval: 30.0DEG
Test Speed: HIGH
Temperature: 25.3DEG
Operators: DAMIN
Test Date: 2022-04-23

γ Range: 0 - 180DEG
γ Interval: 1.0DEG
Test System: EVERFINE GO-2000A_V1 SYSTEM V2.00.443
Humidity: 65.0%
Test Distance: 8.000m [K=0.7063]
Remarks:

ISOLUX DIAGRAM

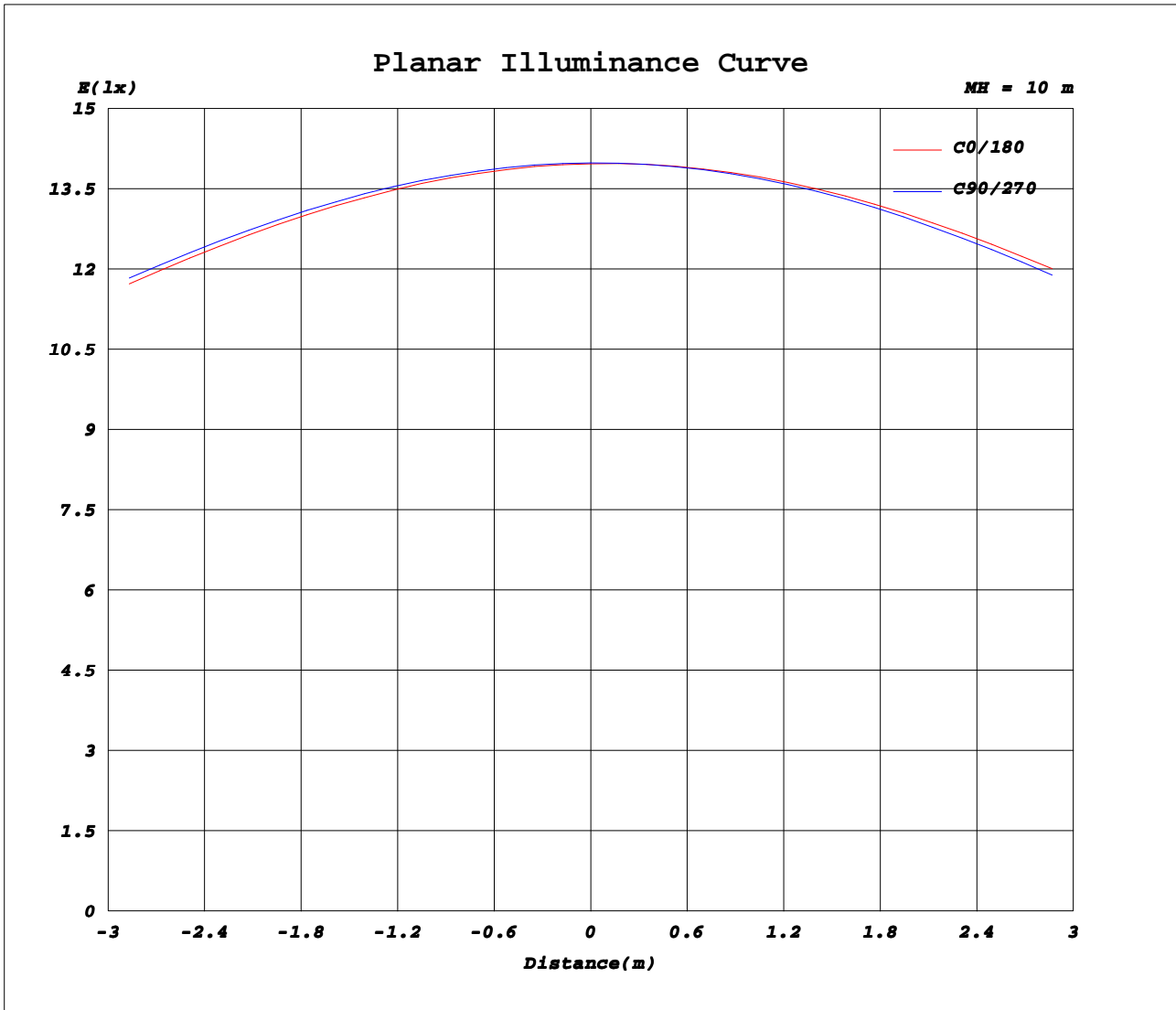
Test:U:220.60V I:0.1460A P:30.100W PF:0.9360 Freq:50.00Hz		
Lamp Flux:4141.56x1 lm		
Name: NS60-595*595-30W	Type: LED	
MFR.: Lumega Group	DIM.: 595*595mm	
	SUR.: 550*550mm	



C Range: 0 - 360DEG
C Interval: 30.0DEG
Test Speed: HIGH
Temperature: 25.3DEG
Operators: DAMIN
Test Date: 2022-04-23

γ Range: 0 - 180DEG
γ Interval: 1.0DEG
Test System: EVERFINE GO-2000A_V1 SYSTEM V2.00.443
Humidity: 65.0%
Test Distance: 8.000m [K=0.7063]
Remarks:

Planar Illuminance Curve



C Range: 0 - 360DEG
C Interval: 30.0DEG
Test Speed: HIGH
Temperature: 25.3DEG
Operators: DAMIN
Test Date: 2022-04-23

γ Range: 0 - 180DEG
γ Interval: 1.0DEG
Test System: EVERFINE GO-2000A_V1 SYSTEM V2.00.443
Humidity: 65.0%
Test Distance: 8.000m [K=0.7063]
Remarks:

LUMINOUS DISTRIBUTION INTENSITY DATA

Test:U:220.60V I:0.1460A P:30.100W PF:0.9360 Freq:50.00Hz		
Lamp Flux:4141.56x1 lm		
Name: NS60-595*595-30W	Type: LED	
MFR.: Lumega Group	DIM.: 595*595mm	
	SUR.: 550*550mm	

Table--1

UNIT: cd

C(DEG) γ (DEG)	0	30	60	90	120	150	180	210	240	270	300	330							
0	1397	1398	1398	1399	1399	1398	1397	1398	1398	1399	1399	1399							
5	1386	1387	1389	1391	1394	1396	1396	1396	1396	1394	1392	1389							
10	1363	1364	1367	1371	1376	1381	1383	1383	1380	1377	1372	1367							
15	1328	1331	1334	1340	1347	1354	1358	1357	1353	1346	1341	1335							
20	1282	1284	1289	1297	1306	1316	1322	1319	1312	1304	1296	1289							
25	1226	1228	1234	1243	1255	1267	1274	1270	1260	1250	1241	1233							
30	1159	1162	1169	1178	1193	1207	1217	1210	1198	1186	1176	1167							
35	1082	1087	1094	1104	1121	1138	1148	1140	1126	1112	1100	1090							
40	997	1002	1009	1021	1040	1059	1071	1062	1046	1030	1016	1005							
45	903	908	917	929	950	972	986	974	957	940	924	912							
50	803	807	817	832	853	877	894	880	860	844	825	811							
55	694	699	710	726	749	773	790	776	755	736	718	703							
60	581	586	597	614	638	664	682	667	645	624	604	589							
65	464	468	480	499	523	550	569	554	530	507	487	473							
70	346	350	362	380	405	432	451	436	412	388	369	355							
75	232	236	246	263	287	315	334	320	296	272	255	242							
80	128	133	141	154	178	205	222	210	188	166	152	139							
85	43.4	47.7	55.2	66.5	84.5	106	122	113	96.2	79.5	66.2	54.3							
90	8.21	8.90	8.54	9.04	16.0	28.1	39.4	34.4	25.0	16.3	11.4	8.83							
95	9.22	9.48	9.24	8.78	8.93	9.63	10.5	10.5	10.4	10.5	10.9	10.5							
100	10.2	10.1	9.89	9.58	9.55	10.3	11.4	11.5	11.5	11.5	11.9	11.6							
105	11.1	10.9	10.8	10.6	10.4	11.0	12.4	12.5	12.5	12.6	12.9	12.5							
110	11.9	11.8	11.7	11.6	11.3	11.9	13.2	13.4	13.4	13.5	13.7	13.3							
115	12.7	12.7	12.6	12.5	12.2	12.8	14.0	14.2	14.2	14.3	14.6	14.1							
120	13.6	13.5	13.5	13.4	13.1	13.7	14.9	15.0	15.0	15.2	15.4	15.0							
125	14.5	14.4	14.4	14.3	14.0	14.6	15.7	15.9	15.9	16.0	16.2	15.8							
130	15.4	15.3	15.3	15.3	15.0	15.5	16.6	16.7	16.7	16.8	17.0	16.6							
135	16.3	16.2	16.2	16.2	15.9	16.4	17.4	17.5	17.5	17.6	17.8	17.4							
140	17.2	17.1	17.1	17.1	16.9	17.3	18.2	18.4	18.4	18.5	18.6	18.3							
145	18.1	18.1	18.1	18.0	17.8	18.2	19.0	19.2	19.2	19.2	19.4	19.1							
150	19.2	19.1	19.1	19.1	18.8	19.1	19.8	20.0	20.0	20.0	20.1	19.9							
155	20.2	20.0	20.0	20.1	19.8	20.0	20.6	20.8	20.8	20.8	20.9	20.7							
160	20.9	20.8	20.8	20.9	20.6	20.8	21.4	21.4	21.5	21.6	21.5	21.3							
165	21.5	21.4	21.5	21.5	21.3	21.4	21.8	21.8	21.9	22.0	21.9	21.8							
170	22.0	22.0	22.0	22.0	21.9	21.9	22.1	22.1	22.2	22.2	22.2	22.1							
175	22.3	22.3	22.4	22.4	22.3	22.2	22.2	22.3	22.4	22.4	22.3	22.3							
180	22.3	22.4	22.5	22.5	22.4	22.3	22.3	22.4	22.5	22.4	22.4	22.3							

C Range: 0 - 360DEG
C Interval: 30.0DEG
Test Speed: HIGH
Temperature:25.3DEG
Operators:DAMIN
Test Date:2022-04-23

γ Range: 0 - 180DEG
γ Interval: 1.0DEG
Test System:EVERFINE GO-2000A_V1 SYSTEM V2.00.443
Humidity:65.0%
Test Distance:8.000m [K=0.7063]
Remarks: